



## Butler County General Health District's 96<sup>th</sup> COVID-19 Update (12/25/2021)

### Confirmed and Probable COVID-19 Cases Reported to Butler County\* Butler County Residents, 2020-21

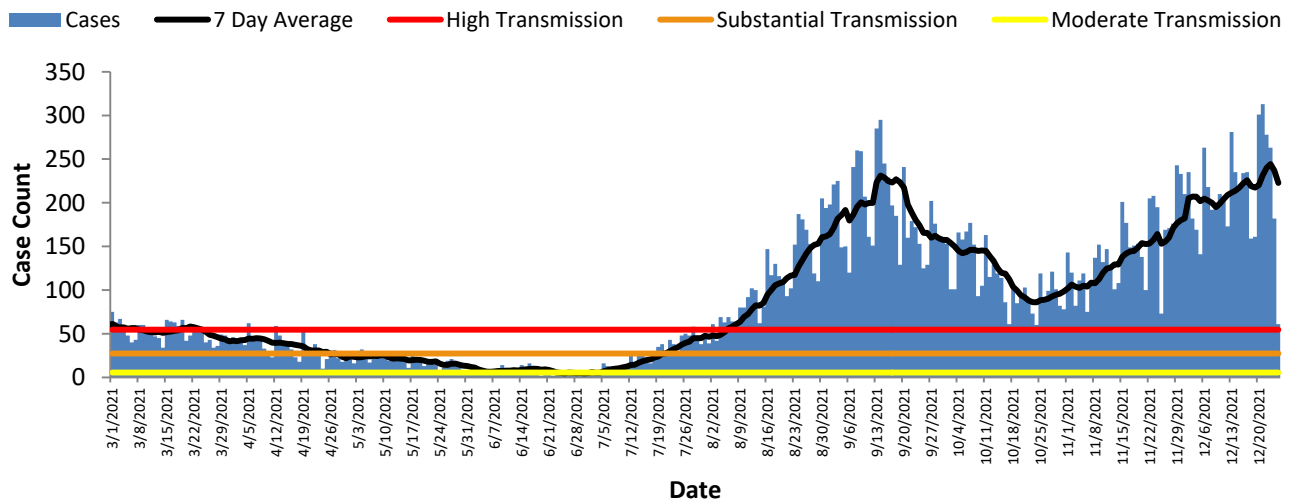
<b>Total # of Cases (12/25):</b>	<b>61,395*</b>
<b>ODH verified Deaths (12/25):</b>	<b>879**</b>
<b>Hospitalizations (12/25):</b>	<b>2,637</b>
<b>First Case Reported:</b>	3/11/2020
<b>Last Case Reported (so far):</b>	12/25/2021
<b>Confirmed Cases:</b>	<b>51,231</b>
<b>Probable Cases:</b>	<b>11,838</b>
<b>Age Range:</b>	<1-103
<b>Median Age:</b>	<b>38</b>
<b>Mean Age:</b>	39.2
<b>Incidence (thru 12/25):</b>	16,461.3 per 100,000
<b>Prevalence (thru 12/25):</b>	<b>16.5% of BC population</b>
<b>7-Day Positivity Rate (12/30):</b>	<b>19.2<sup>#</sup>% of tests performed in BC</b>

Table 1: CDC Indicators		
Indicator	Butler County New Cases over 7 days	Status Level According to CDC
<b>Incidence per 100,000 population</b>	<b>406.9 per 100,000</b>	<b>High Spread (over 100 per 100,000)</b>
<b>Positivity Rate</b>	<b>19.17% of tests performed in Butler County</b>	<b>High Positivity (over 10.0% of tests)</b>

This report has transitioned from using the target indicators that Governor DeWine and the Ohio Department of Health had previously set to the CDC's Community Transmission Indicators. The CDC has its own data tracker that is accessible at <https://covid.cdc.gov/covid-data-tracker/#datatracker-home>, which gives a good picture of how the nation as a whole is doing. They also have county tracking information, but as CDC mentions, local reports will be more up-to-date and should be considered more definitive.

Cases increased from the previous week. Cases increased at steady rate over the last week. These cases are those that were reported up to Christmas day. The high positivity rate indicates that nearly 1 out of every 5 tests in Butler County were positive for COVID-19. It should be noted that testing volume increased at the same time. It is likely that growth rate of cases will increase in the weeks to come.

**Figure 1. Cases by Date of Event Since March 1, 2021**



All figures show reported cases of COVID-19 in Butler County as of 0800 EST 12/30/2021. Due to delays in reporting, the numbers of confirmed and probable cases on all figures are subject to change between reports and confirmed and probable case counts are likely to increase. \*This should not be assumed to be the total disease burden of COVID-19 in Butler County only those that have been laboratory confirmed OR meet ODH probable case criteria AND reported to Public Health.

\*Data is provisional – only confirmed or probable COVID-19 cases are included in counts. Report reflects time period since the introduction of SARS-CoV-2 into humans, measured in days. Data accessed from the Ohio Disease Reporting System (ODRS) on 12/30/2021 at 0800 EST.

\*\*Deaths are now reconciled to the Ohio Department of Health's available data to avoid discrepancies between the state and local numbers. ODH's protocol has changed to avoid reconciliation errors and now only includes those deaths that have been reconciled with Vital statistics and may not match what has been reported to the CDC which are provisional numbers. This is a lagging indicator and will be multiple weeks behind.

Vaccination numbers were collected 1200 EST 12/30/2021 from ODH COVID-19 Dashboard and the Innovate Ohio Platform. Vaccinations are considered started on the day an individual receives first dose of a COVID-19 vaccine. Vaccinations are considered completed on the day an individual receives the final recommended dose of a vaccine.

#Gathered from CDC's Data Tracker of Butler County 12/30/2021 0800 EST accessible at <https://covid.cdc.gov/covid-data-tracker/#county-view>

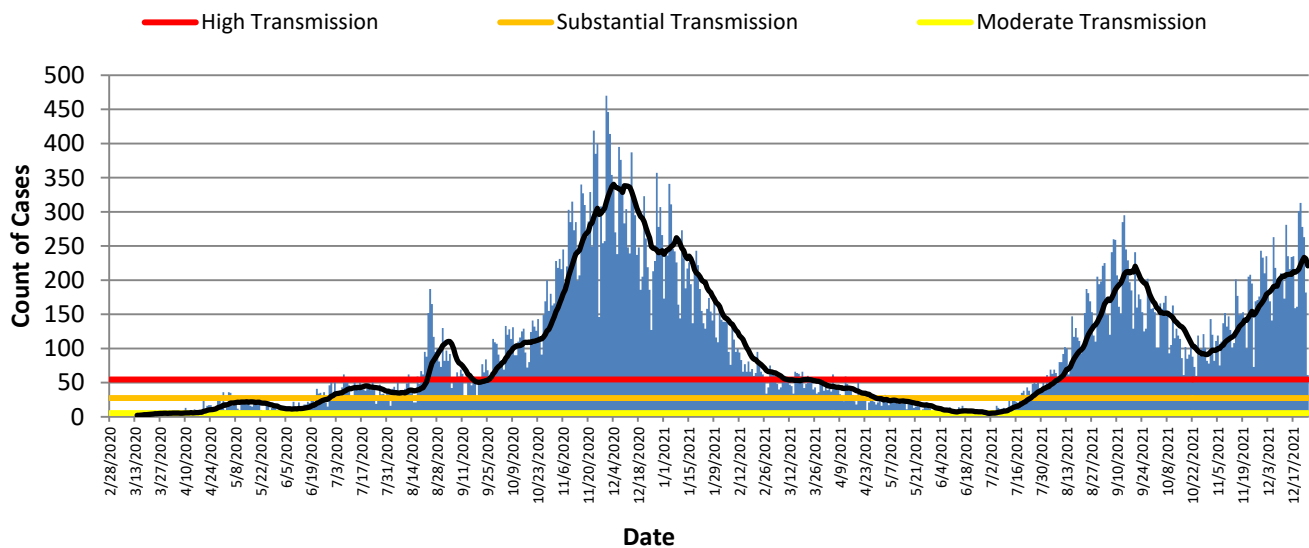
Table 2: Total Reported* Cases by ZIP Code						
ZIP Code	Number of Cases	New Cases (12/19-12/25)	Change in cases from previous 7 days (12/12-12/18)	Transmission	% of Cases	
45011	11211	323	16 (5.2%)	High	17.8%	
45044	8932	213	-25 (-10.5%)	High	14.2%	
45013	8547	206	-47 (-18.6%)	High	13.6%	
45069	7808	259	61(30.8%)	High	12.4%	
45014	7598	207	36 (21.1%)	High	12.0%	
45056	4532	56	-4 (-6.7%)	High	7.2%	
45042	4360	99	-1 (-1.0%)	High	6.9%	
45067	2695	48	-8 (-14.3%)	High	4.3%	
45050	1906	40	15 (60.0%)	High	3.0%	
45015	1760	49	-1 (-2.0%)	High	2.8%	
45241	871	20	-4 (-16.7%)		1.4%	
45053	509	4	-10(-71.4%)	High	0.8%	
45005	384	16	5(45.5%)		0.6%	
45064	249	5	2(66.7%)		0.4%	
45246	105	4	1 (33.3%)		0.2%	
45062	97	0	-3 (-100%)		0.2%	
Cases lacking zip code information or from zip codes with too few cases	1,505	10	-		2.4%	
<b>Butler County (inclusive)</b>	<b>63,069</b>	<b>1436</b>	<b>26 (1.70%)</b>	<b>High</b>	<b>100%</b>	

Zip-codes that have transmissions not rated have most of their populations outside of Butler County. Zip-codes with too few cases have been removed for privacy concerns.

**New Cases are determined by "Date of Event" which is when the case was ill/test was collected. CDC determines new cases by "Date of Report".**

Table 2 shows the zip-code level data that is new for this week. **All zip-codes** have rates of disease that once again meet the CDC's definition of a **community of high transmission**. Since individuals are rarely constrained by the relatively small borders of a zip-code in their day-to-day lives, these transmission indicators are for information only. For practical guidance, follow the county level indicators.

**Figure 2. Reported Cases of COVID-19 by Date of Event 2020-2021\***



All figures show reported cases of COVID-19 in Butler County as of 0800 EST 12/30/2021. Due to delays in reporting, the numbers of confirmed and probable cases on all figures are subject to change between reports and confirmed and probable case counts are likely to increase. \*This should not be assumed to be the total disease burden of COVID-19 in Butler County only those that have been laboratory confirmed OR meet ODH probable case criteria AND reported to Public Health.

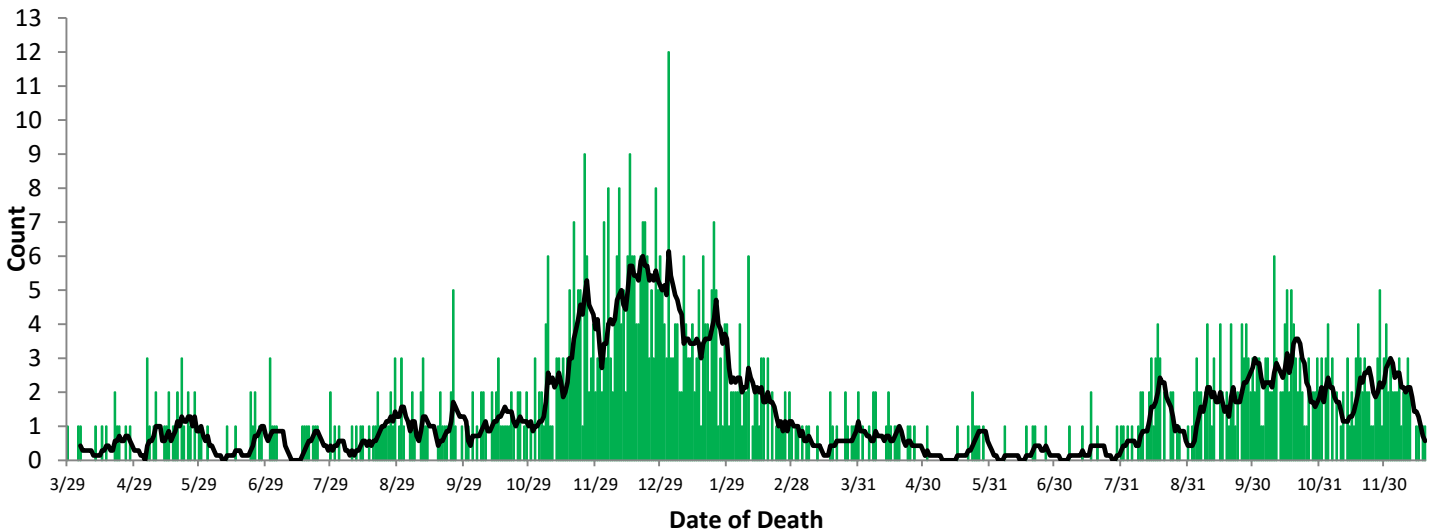
\*Data is provisional – only confirmed or probable COVID-19 cases are included in counts. Report reflects time period since the introduction of SARS-CoV-2 into humans, measured in days. Data accessed from the Ohio Disease Reporting System (ODRS) on 12/30/2021 at 0800 EST.

\*\*Deaths are now reconciled to the Ohio Department of Health's available data to avoid discrepancies between the state and local numbers. ODH's protocol has changed to avoid reconciliation errors and now only includes those deaths that have been reconciled with Vital statistics and may not match what has been reported to the CDC which are provisional numbers. This is a lagging indicator and will be multiple weeks behind.

Vaccination numbers were collected 1200 EST 12/30/2021 from ODH COVID-19 Dashboard and the Innovate Ohio Platform. Vaccinations are considered started on the day an individual receives first dose of a COVID-19 vaccine. Vaccinations are considered completed on the day an individual receives the final recommended dose of a vaccine.

#Gathered from CDC's Data Tracker of Butler County 12/30/2021 0800 EST accessible at <https://covid.cdc.gov/covid-data-tracker/#county-view>

**Figure 3. Confirmed COVID-19 Deaths by date of death, 2020-21\*\***



Figures 3 and 4 show severe case outcomes. These are both lagging indicators since it typically takes time for a case to succumb to COVID and well over a month for a COVID-19 death to be verified. Hospitalizations and the case hospitalization rate increased this week. Hospitals are once again straining under the weight of hospitalized COVID-19 patients.

**Figure 4. COVID-19 Hospitalizations of Butler County Residents by Week since the first week of March 2021**

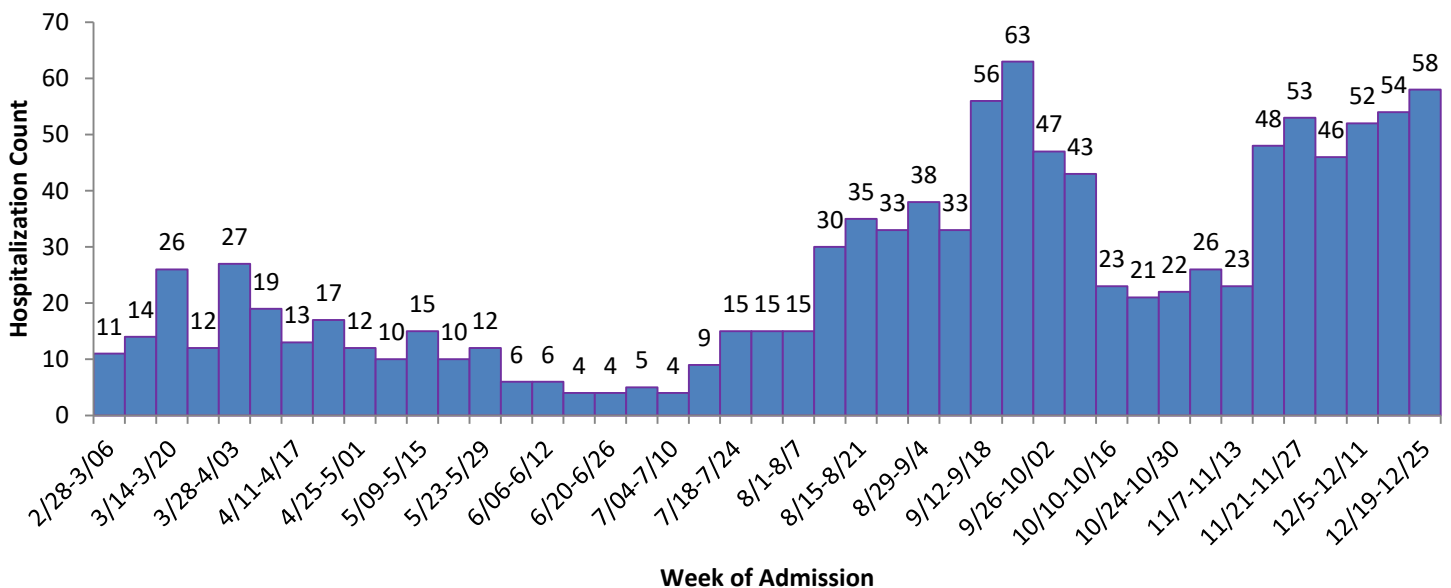


Figure 5 shows vaccines started in Butler County by their date of administration. Table 3 shows the counts of new immunizations over the last two week period as well as total estimates by age group.

All figures show reported cases of COVID-19 in Butler County as of 0800 EST 12/30/2021. Due to delays in reporting, the numbers of confirmed and probable cases on all figures are subject to change between reports and confirmed and probable case counts are likely to increase. \*This should not be assumed to be the total disease burden of COVID-19 in Butler County only those that have been laboratory confirmed OR meet ODH probable case criteria AND reported to Public Health.

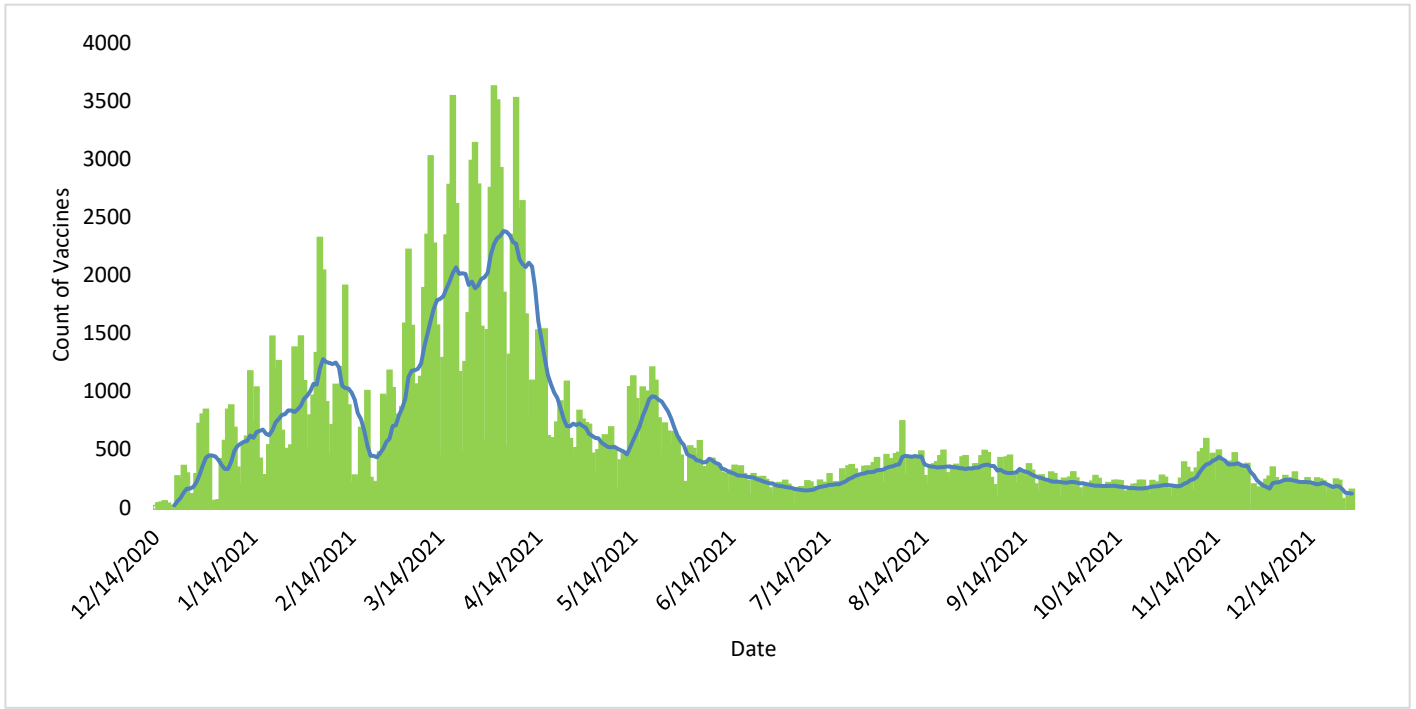
\*\*Data is provisional – only confirmed or probable COVID-19 cases are included in counts. Report reflects time period since the introduction of SARS-CoV-2 into humans, measured in days. Data accessed from the Ohio Disease Reporting System (ODRS) on 12/30/2021 at 0800 EST.

\*\*\*Deaths are now reconciled to the Ohio Department of Health’s available data to avoid discrepancies between the state and local numbers. ODH’s protocol has changed to avoid reconciliation errors and now only includes those deaths that have been reconciled with Vital statistics and may not match what has been reported to the CDC which are provisional numbers. This is a lagging indicator and will be multiple weeks behind.

Vaccination numbers were collected 1200 EST 12/30/2021 from ODH COVID-19 Dashboard and the Innovate Ohio Platform. Vaccinations are considered started on the day an individual receives first dose of a COVID-19 vaccine. Vaccinations are considered completed on the day an individual receives the final recommended dose of a vaccine.

#Gathered from CDC’s Data Tracker of Butler County 12/30/2021 0800 EST accessible at <https://covid.cdc.gov/covid-data-tracker/#county-view>

**Figure 5. Vaccines Administered by Date in Butler County, 2020-2021**



After an initial surge in vaccine demand seen in late winter and through the spring, demand dramatically dropped off. However, beginning in late July, coinciding with the oncoming school year and rise in cases associated with the Delta variant, there was a slight, but steady increase followed by gradual decline that has continued. A new increase has occurred as 5-11 year olds have become eligible and a decline as those who are most likely to get vaccinated have already done so.

**Table 3. Vaccination Statistics by Age Group for Butler County Residents**

Age Group (Years)	Estimated Count of Population # (%)	Count of People Vaccinated (%) as of 11/23/2021	Count of People Vaccinated (%) as of 12/7/2021	Count of People Vaccinated During the last two weeks	Percent Change from 11/23-12/7	Estimated Count of People Unvaccinated
5-11	33,689 (9%)	4,188 (12.4%)	5,223 (15.5%)	1,035	24.7%	28,466
12-14	15,069 (4%)	6,132 (40.7%)	6,175 (41.0%)	43	0.7%	8,894
15-17	15,838 (4%)	7,336 (46.3%)	7,402 (46.7%)	66	0.9%	8,436
18-20	20,735 (5%)	9,083 (43.8%)	9,138 (44.1%)	55	0.6%	11,597
21-24	23,864 (6%)	11,879 (49.8%)	12,064 (50.6%)	185	1.6%	11,800
25-34	48,008 (13%)	24,969 (52.0%)	25,373 (52.9%)	404	1.6%	22,635
35-44	45,659 (12%)	29,813 (65.3%)	30,153 (66.0%)	340	1.1%	15,506
45-54	46,344 (12%)	31,055 (67.0%)	31,352 (67.7%)	297	1.0%	14,992
55-64	48,369 (13%)	37,071 (76.6%)	37,407 (77.3%)	336	0.9%	10,962
65-74	36,132 (9%)	30,909 (85.5%)	31,106 (86.1%)	197	0.6%	5,026
75-84	17,318 (5%)	15,086 (87.1%)	15,255 (88.1%)	169	1.1%	2,063
85+	6,788 (2%)	6,049 (89.1%)	6,143 (90.5%)	94	1.6%	645

#Population estimates from the Ohio Hospital Association and are from December 2020.  
Does not include Booster doses

All figures show reported cases of COVID-19 in Butler County as of 0800 EST 12/30/2021. Due to delays in reporting, the numbers of confirmed and probable cases on all figures are subject to change between reports and confirmed and probable case counts are likely to increase. \*This should not be assumed to be the total disease burden of COVID-19 in Butler County only those that have been laboratory confirmed OR meet ODH probable case criteria AND reported to Public Health.

\*Data is provisional – only confirmed or probable COVID-19 cases are included in counts. Report reflects time period since the introduction of SARS-CoV-2 into humans, measured in days. Data accessed from the Ohio Disease Reporting System (ODRS) on 12/30/2021 at 0800 EST.

\*\*Deaths are now reconciled to the Ohio Department of Health’s available data to avoid discrepancies between the state and local numbers. ODH’s protocol has changed to avoid reconciliation errors and now only includes those deaths that have been reconciled with Vital statistics and may not match what has been reported to the CDC which are provisional numbers. This is a lagging indicator and will be multiple weeks behind.

Vaccination numbers were collected 1200 EST 12/30/2021 from ODH COVID-19 Dashboard and the Innovate Ohio Platform. Vaccinations are considered started on the day an individual receives first dose of a COVID-19 vaccine. Vaccinations are considered completed on the day an individual receives the final recommended dose of a vaccine.

#Gathered from CDC’s Data Tracker of Butler County 12/30/2021 0800 EST accessible at <https://covid.cdc.gov/covid-data-tracker/#county-view>

**Table 4. Cases Under Age of 17 by Zip –Code 08/01-12/25**

Zip Code	Cases since August 1st	Cases per 100,000 past week
45011	1042	321.7
45069	663	370.6
45044	817	221.3
45014	531	276.1
45013	643	219.9
45050	174	339.8
45042	324	207.4
45056	186	133.6
45015	160	312.8
45241	67	-
45067	250	242.1
45053	34	No cases reported
45246	12	-

^Cases are below threshold to release. Population estimates from Ohio Hospital Association 2019

Table 4 shows cases that are ages 17 or younger by zip-code. The importance of this table is to demonstrate that though numbers remain small on an absolute level, relative to the population size it has actually been very high spread since the start of school. Were we to classify ages by zip-code in the same manner of the CDC’s definition, all of Butler County would be considered “high” transmission for school-age students. It is true that children are less likely to develop severe illness, but they are not immune and they can spread it to others. **There have been pediatric hospitalizations of COVID-19 in Butler County.** Since the beginning of the pandemic, **pediatric hospitalizations of COVID-19 have doubled the 5-year average of pediatric hospitalizations of influenza in Butler County.** That figure is not including children hospitalized with MIS-C associated with COVID-19, just those with acute COVID-19 infection.

The best ways to prevent your child from contracting COVID-19 and risking severe outcomes is to get your child vaccinated as soon as they are old enough, and to follow precautions such as wearing masks indoors- especially for those who are too young or cannot otherwise get the COVID-19 vaccination. Table 5 shows the vaccination rates among zip-codes by eligible populations.

**Table 5. Percent of the Eligible Population Vaccinated by Zip Code (at least one Dose)**

Zip Code	% of the Total Population Vaccinated	% of the Eligible Population Vaccinated	% of 12-17 Year Old Vaccinated	% of 5-11 Year Olds Vaccinated
45011	55%	59%	48%	19%
45013	54%	57%	38%	12%
45014	64%	67%	53%	17%
45015	46%	50%	33%	7%
45042	51%	54%	35%	9%
45044	55%	59%	48%	16%
45050	62%	66%	53%	21%
45053	55%	58%	43%	9%
45056	44%	45%	44%	34%
45064	44%	46%	24%	7%
45067	42%	45%	34%	8%
45069	72%	77%	65%	37%

All figures show reported cases of COVID-19 in Butler County as of 0800 EST 12/30/2021. Due to delays in reporting, the numbers of confirmed and probable cases on all figures are subject to change between reports and confirmed and probable case counts are likely to increase. \*This should not be assumed to be the total disease burden of COVID-19 in Butler County only those that have been laboratory confirmed OR meet ODH probable case criteria AND reported to Public Health.

\*Data is provisional – only confirmed or probable COVID-19 cases are included in counts. Report reflects time period since the introduction of SARS-CoV-2 into humans, measured in days. Data accessed from the Ohio Disease Reporting System (ODRS) on 12/30/2021 at 0800 EST.

\*\*Deaths are now reconciled to the Ohio Department of Health’s available data to avoid discrepancies between the state and local numbers. ODH’s protocol has changed to avoid reconciliation errors and now only includes those deaths that have been reconciled with Vital statistics and may not match what has been reported to the CDC which are provisional numbers. This is a lagging indicator and will be multiple weeks behind.

Vaccination numbers were collected 1200 EST 12/30/2021 from ODH COVID-19 Dashboard and the Innovate Ohio Platform. Vaccinations are considered started on the day an individual receives first dose of a COVID-19 vaccine. Vaccinations are considered completed on the day an individual receives the final recommended dose of a vaccine.

#Gathered from CDC’s Data Tracker of Butler County 12/30/2021 0800 EST accessible at <https://covid.cdc.gov/covid-data-tracker/#county-view>