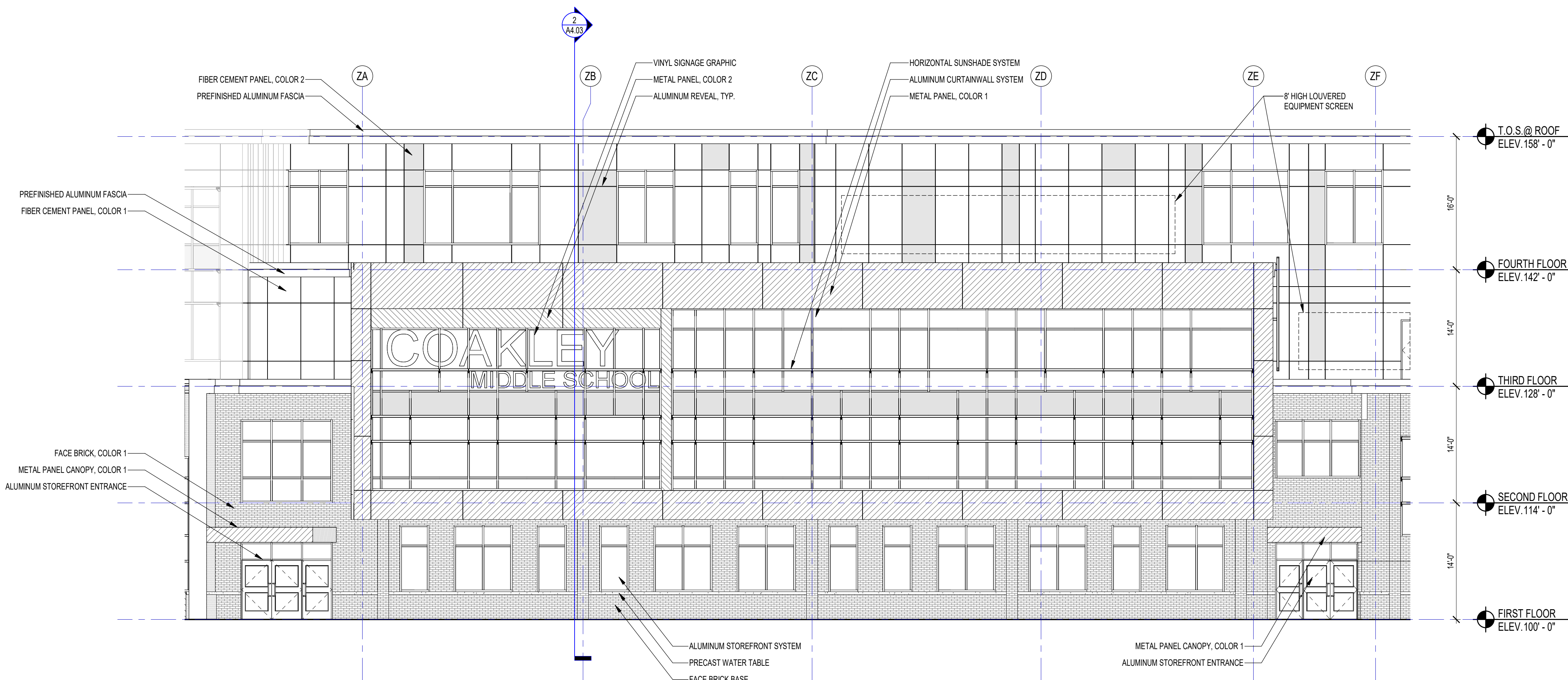
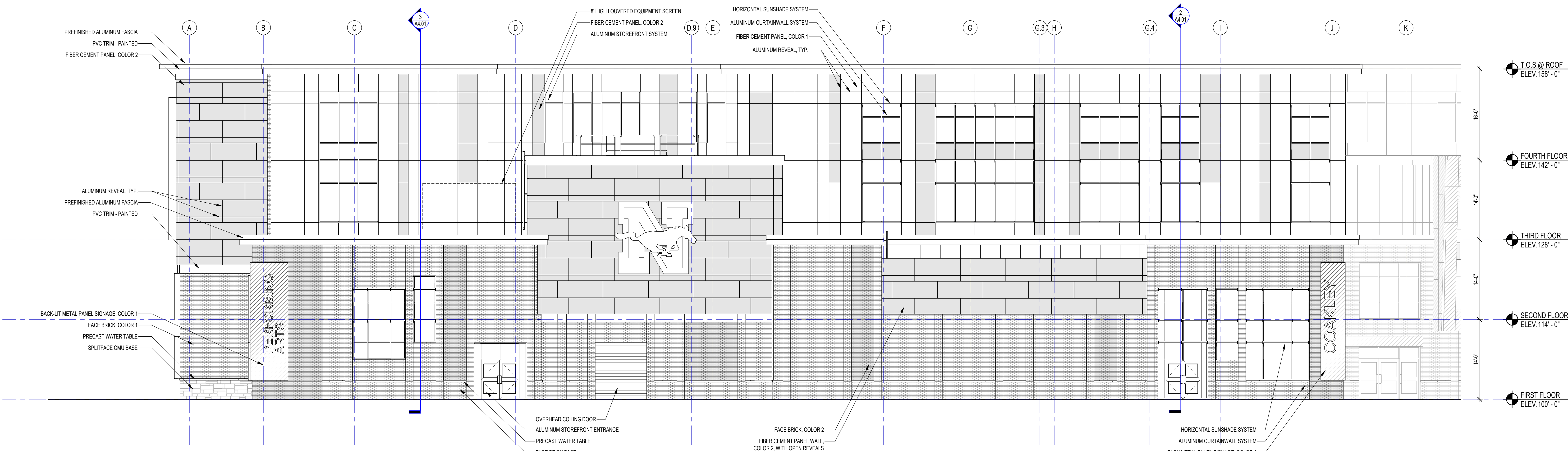


3 OVERALL SOUTH ELEVATION
1/16" = 1'-0"



2 PARTIAL SOUTH ELEVATION
1/8" = 1'-0"



1 PARTIAL SOUTH ELEVATION
1/8" = 1'-0"



526 Boston Post Rd
508.358.0790
Wayland, MA
www.ai3architects.com



PHILIP O. COAKLEY MIDDLE SCHOOL
1315 WASHINGTON STREET
NORWOOD, MA 02062

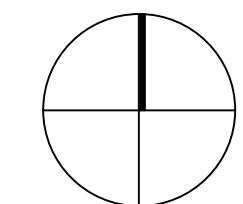
KEYNOTE LEGEND:

| LEGEND | |
|----------------------------|--|
| METAL PANEL - COLOR 1 | |
| METAL PANEL - COLOR 2 | |
| METAL PANEL - COLOR 3 | |
| FACE BRICK - COLOR 1 | |
| FACE BRICK - COLOR 2 | |
| SPLIT FACE CMU TYPE 1 | |
| FIBER CEMENT PANEL COLOR 1 | |
| FIBER CEMENT PANEL COLOR 2 | |

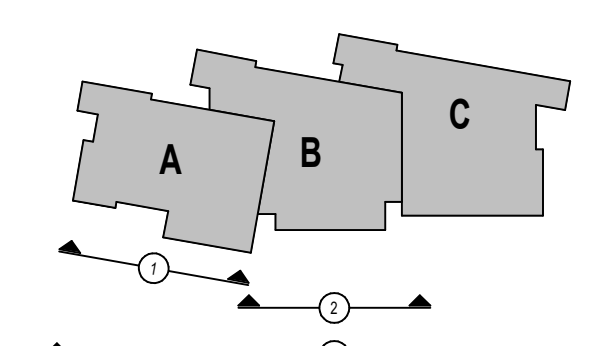
- GENERAL NOTES:**
1. REFER TO SHEET A5.01 FOR TYPICAL HORIZONTAL BOND BREAK IN VENEER BETWEEN CHANGES IN VENEER MATERIALS.
 2. REFER TO SHEET A3.31 FOR ADDITIONAL FIBER CEMENT PANEL INFORMATION AND DETAILS.
 3. COORDINATE EXACT LOCATION OF SPEAKERS, CAMERAS, AND LIGHTING WITH ARCHITECT PRIOR TO INSTALLATION.
 4. REFER TO CIVIL DRAWINGS FOR FINISH GRADE ELEVATIONS.
 5. REFER TO A3.35 FOR PRECAST TYPES
 6. REFER TO A3.45 FOR SUNSHADE TYPES

SCHEMATIC DESIGN

KEY PLAN NORTH ARROW



KEYPLAN



DRAWING NAME:

EXTERIOR ELEVATIONS

DRAWN BY: NJ / NSL

REVIEWED BY: JPT / KRK

SCALE: AS INDICATED DRAWING NUMBER:

JOB NO.: 2002.00

DATE: DECEMBER 28, 2021

A3.01



PHILIP O. COAKLEY MIDDLE SCHOOL
1315 WASHINGTON STREET
NORWOOD, MA 02062

Copyright © 2021 Ai3 Architects, LLC

KEYNOTE LEGEND:

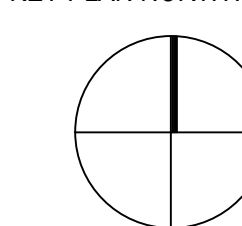
| LEGEND | |
|----------------------------|--|
| METAL PANEL - COLOR 1 | |
| METAL PANEL - COLOR 2 | |
| METAL PANEL - COLOR 3 | |
| FACE BRICK - COLOR 1 | |
| FACE BRICK - COLOR 2 | |
| SPLIT FACE CMU TYPE 1 | |
| FIBER CEMENT PANEL COLOR 1 | |
| FIBER CEMENT PANEL COLOR 2 | |

GENERAL NOTES:

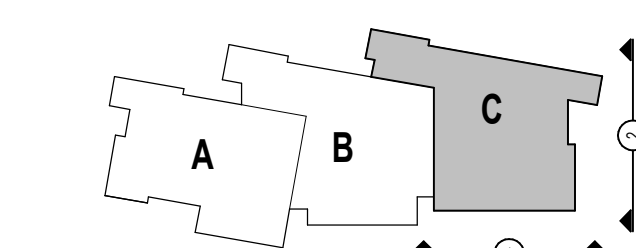
1. REFER TO SHEET A5.01 FOR TYPICAL HORIZONTAL BOND BREAK IN VENEER BETWEEN CHANGES IN VENEER MATERIALS.
2. REFER TO SHEET A3.31 FOR ADDITIONAL FIBER CEMENT PANEL INFORMATION AND DETAILS.
3. COORDINATE EXACT LOCATION OF SPEAKERS, CAMERAS, AND LIGHTING WITH ARCHITECT PRIOR TO INSTALLATION.
4. REFER TO CIVIL DRAWINGS FOR FINISH GRADE ELEVATIONS.
5. REFER TO A3.35 FOR PRECAST TYPES.
6. REFER TO A3.45 FOR SUNSHADE TYPES.

SCHEMATIC DESIGN

KEY PLAN NORTH ARROW



KEYPLAN



DRAWING NAME:

EXTERIOR ELEVATIONS

DRAWN BY: NJ / NSL

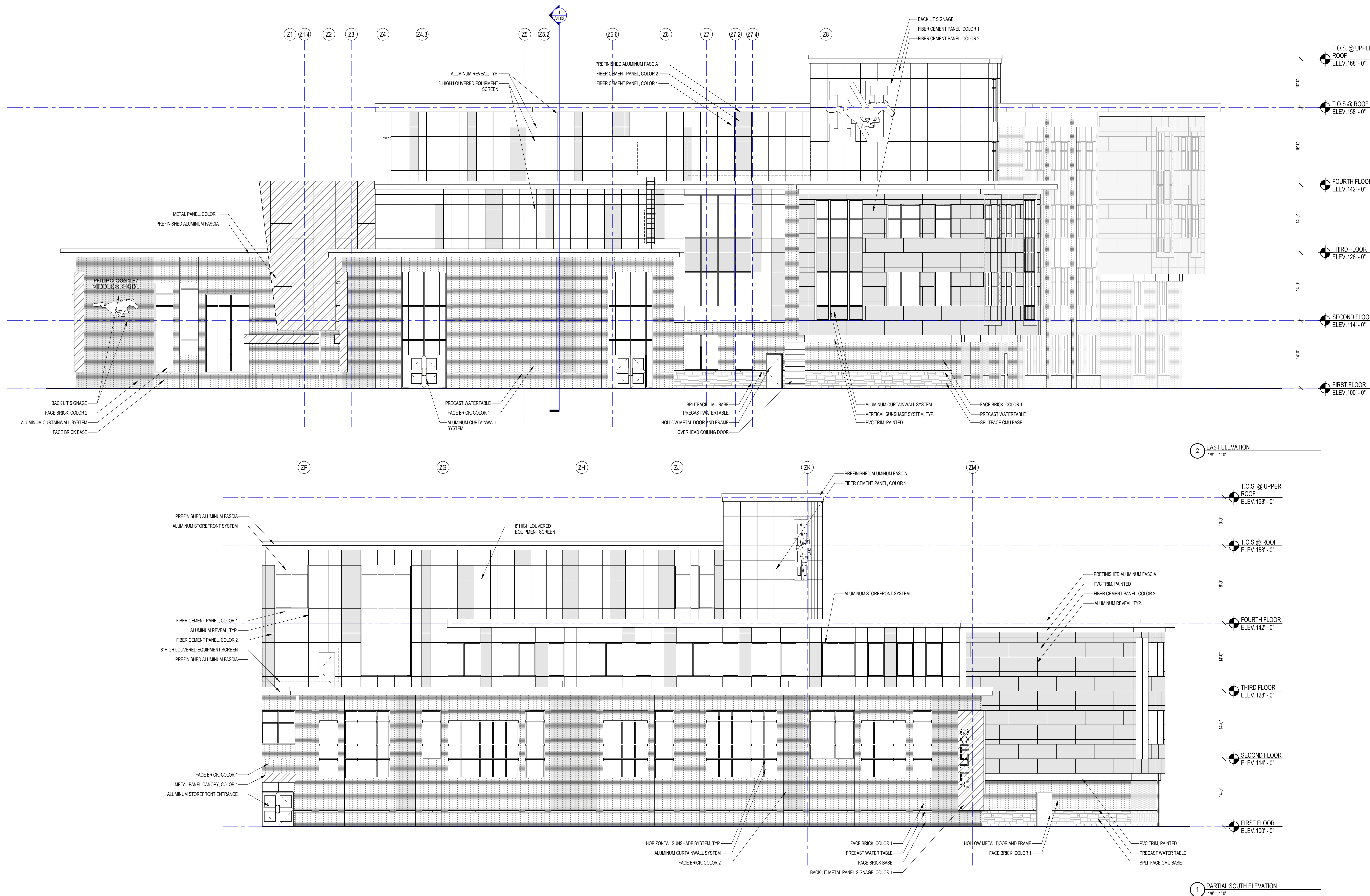
REVIEWED BY: JPT / KRW

SCALE: AS INDICATED | DRAWING NUMBER:


JOB NO.: 2002.00

DATE: DECEMBER 28, 2021

A3.02








526 Boston Post Rd
508.398.0790

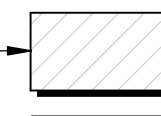
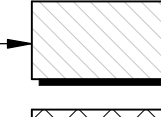
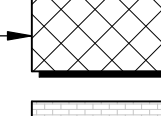
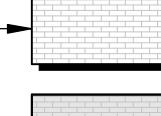
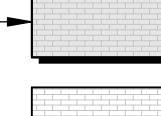
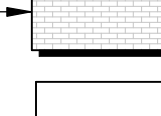


Wayland, MA
www.ai3architects.com



PHILIP O. COAKLEY MIDDLE SCHOOL
1315 WASHINGTON STREET
NORWOOD, MA 02062

KEYNOTE LEGEND:

LEGEND

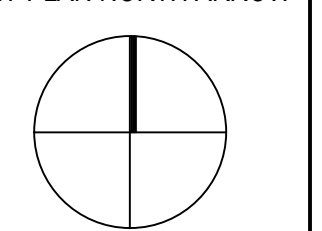
| | |
|----------------------------|---|
| METAL PANEL - COLOR 1 |  |
| METAL PANEL - COLOR 2 |  |
| METAL PANEL - COLOR 3 |  |
| FACE BRICK - COLOR 1 |  |
| FACE BRICK - COLOR 2 |  |
| SPLIT FACE CMU TYPE 1 |  |
| FIBER CEMENT PANEL COLOR 1 |  |
| FIBER CEMENT PANEL COLOR 2 |  |

GENERAL NOTES:

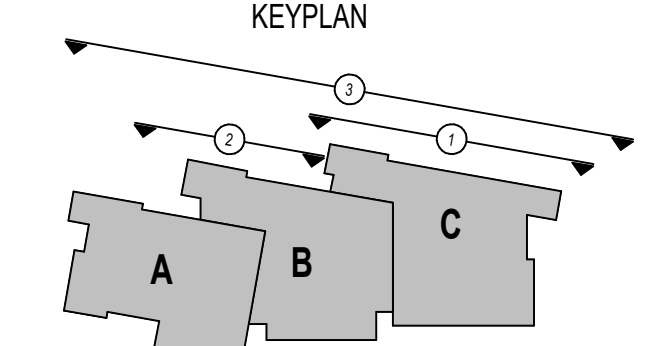
- REFER TO SHEET A5.01 FOR TYPICAL HORIZONTAL BOND BREAK IN VENEER BETWEEN CHANGES IN VENEER MATERIALS.
- REFER TO SHEET A3.31 FOR ADDITIONAL FIBER CEMENT PANEL INFORMATION AND DETAILS.
- COORDINATE EXACT LOCATION OF SPEAKERS, CAMERAS, AND LIGHTING WITH ARCHITECT PRIOR TO INSTALLATION.
- REFER TO CIVIL DRAWINGS FOR FINISH GRADE ELEVATIONS.
- REFER TO A3.35 FOR PRECAST TYPES
- REFER TO A3.45 FOR SUNSHADE TYPES

SCHEMATIC DESIGN

KEY PLAN NORTH ARROW



KEY PLAN



DRAWING NAME:

EXTERIOR ELEVATIONS

DRAWN BY: NJ / NSL

REVIEWED BY: JPT / KKK

SCALE: AS INDICATED

JOB NO.: 2002.00

DATE: DECEMBER 28, 2021

DRAWING NUMBER: A3.03



PHILIP O. COAKLEY MIDDLE SCHOOL
1315 WASHINGTON STREET
NORWOOD, MA 02062

KEYNOTE LEGEND:

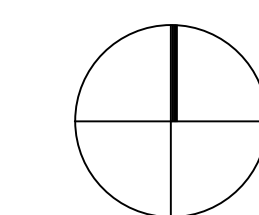
| LEGEND | |
|----------------------------|--|
| METAL PANEL - COLOR 1 | |
| METAL PANEL - COLOR 2 | |
| METAL PANEL - COLOR 3 | |
| FACE BRICK - COLOR 1 | |
| FACE BRICK - COLOR 2 | |
| SPLITFACE CMU TYPE 1 | |
| FIBER CEMENT PANEL COLOR 1 | |
| FIBER CEMENT PANEL COLOR 2 | |

GENERAL NOTES:

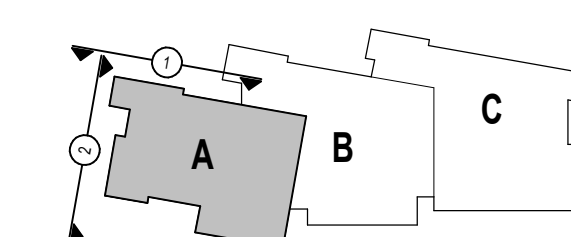
1. REFER TO SHEET A3.01 FOR TYPICAL HORIZONTAL BOND BREAK IN VENEER BETWEEN CHANGES IN VENEER MATERIALS.
2. REFER TO SHEET A3.31 FOR ADDITIONAL FIBER CEMENT PANEL INFORMATION AND DETAILS.
3. COORDINATE EXACT LOCATION OF SPEAKERS, CAMERAS, AND LIGHTING WITH ARCHITECT PRIOR TO INSTALLATION.
4. REFER TO CIVIL DRAWINGS FOR FINISH GRADE ELEVATIONS.
5. REFER TO A3.38 FOR PRECAST TYPES
6. REFER TO A3.45 FOR SUNSHADE TYPES

SCHEMATIC DESIGN

KEY PLAN NORTH ARROW



KEY PLAN



DRAWING NAME:

EXTERIOR ELEVATIONS

DRAWN BY: NJ / NSL

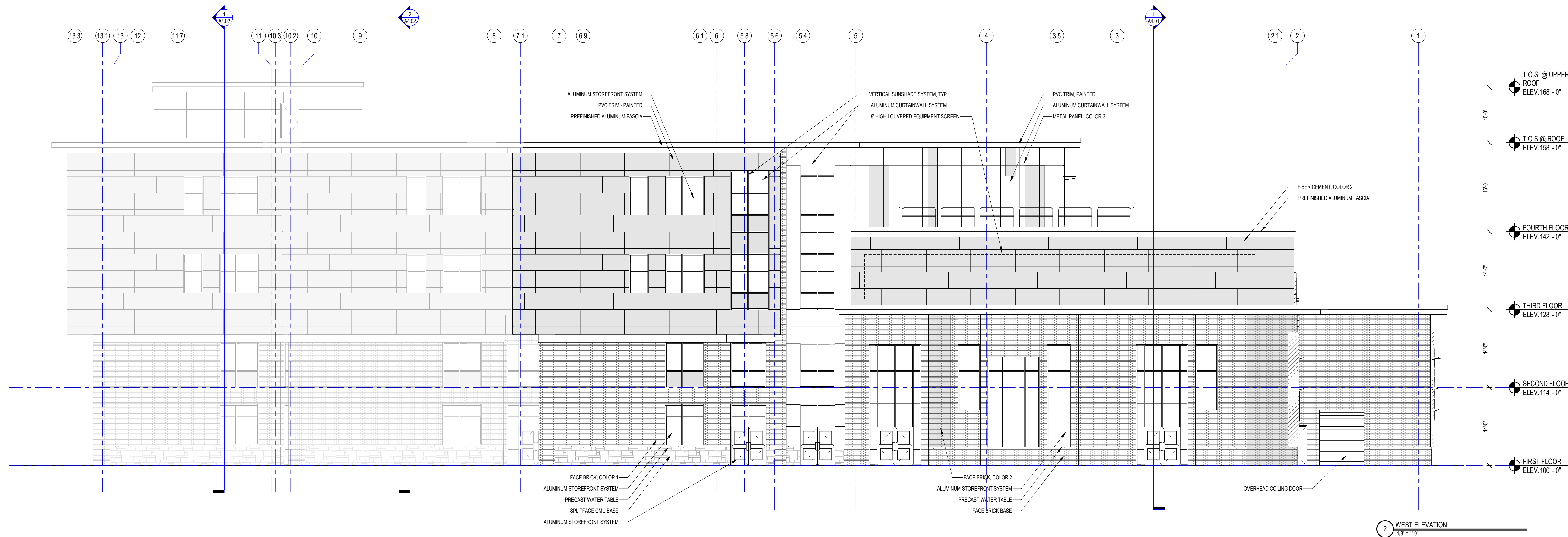
REVIEWED BY: JPT / KFK

SCALE: AS INDICATED | DRAWING NUMBER:

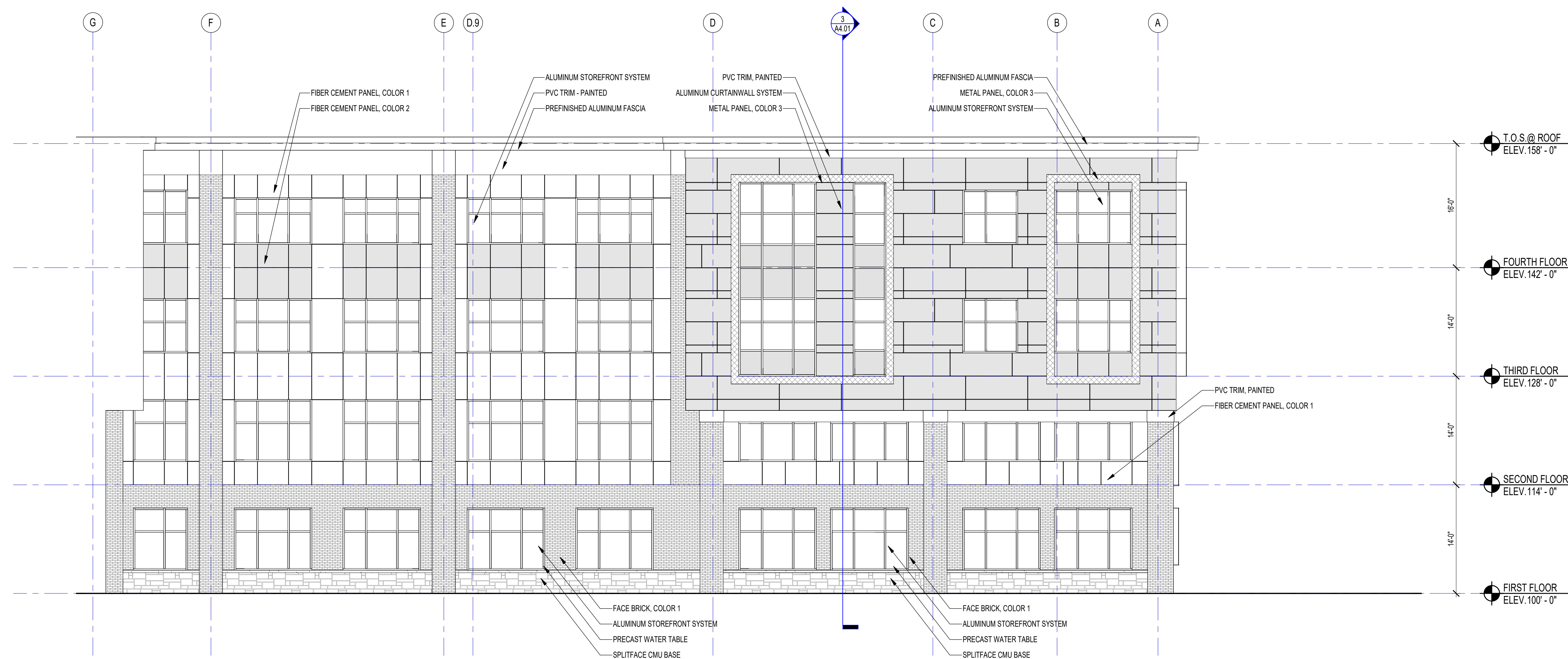
JOB NO.: 2002.00

DATE: DECEMBER 28, 2021

A3.04



2 WEST ELEVATION
1/8" = 1'-0"



1 PARTIAL NORTH ELEVATION
1/8" = 1'-0"



PHILIP O. COAKLEY MIDDLE SCHOOL
1315 WASHINGTON STREET
NORWOOD, MA 02062

KEYNOTE LEGEND:

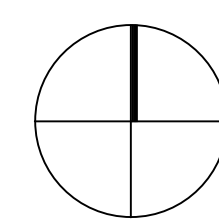
| LEGEND | |
|----------------------------|--|
| METAL PANEL - COLOR 1 | |
| METAL PANEL - COLOR 2 | |
| METAL PANEL - COLOR 3 | |
| FACE BRICK - COLOR 1 | |
| FACE BRICK - COLOR 2 | |
| SPLIT FACE CMU TYPE 1 | |
| FIBER CEMENT PANEL COLOR 1 | |
| FIBER CEMENT PANEL COLOR 2 | |

GENERAL NOTES:

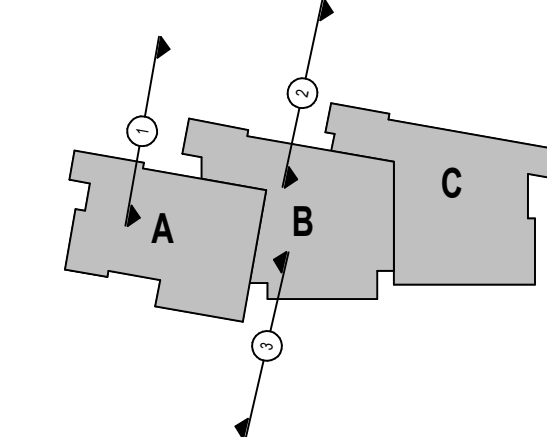
1. REFER TO SHEET A3.01 FOR TYPICAL HORIZONTAL BOND BREAK IN VENEER BETWEEN CHANGES IN VENEER MATERIALS.
2. REFER TO SHEET A3.31 FOR ADDITIONAL FIBER CEMENT PANEL INFORMATION AND DETAILS.
3. COORDINATE EXACT LOCATION OF SPEAKERS, CAMERAS, AND LIGHTING WITH ARCHITECT PRIOR TO INSTALLATION.
4. REFER TO CIVIL DRAWINGS FOR FINISH GRADE ELEVATIONS.
5. REFER TO A3.35 FOR PRECAST TYPES
6. REFER TO A3.45 FOR SUNSHADE TYPES

SCHEMATIC DESIGN

KEY PLAN NORTH ARROW



KEYPLAN



DRAWING NAME:

EXTERIOR ELEVATIONS

DRAWN BY: NJ / NSL

REVIEWED BY: JPT / KRK

SCALE: AS INDICATED | DRAWING NUMBER:

JOB NO.: 2002.00

DATE: DECEMBER 28, 2021

A3.05

