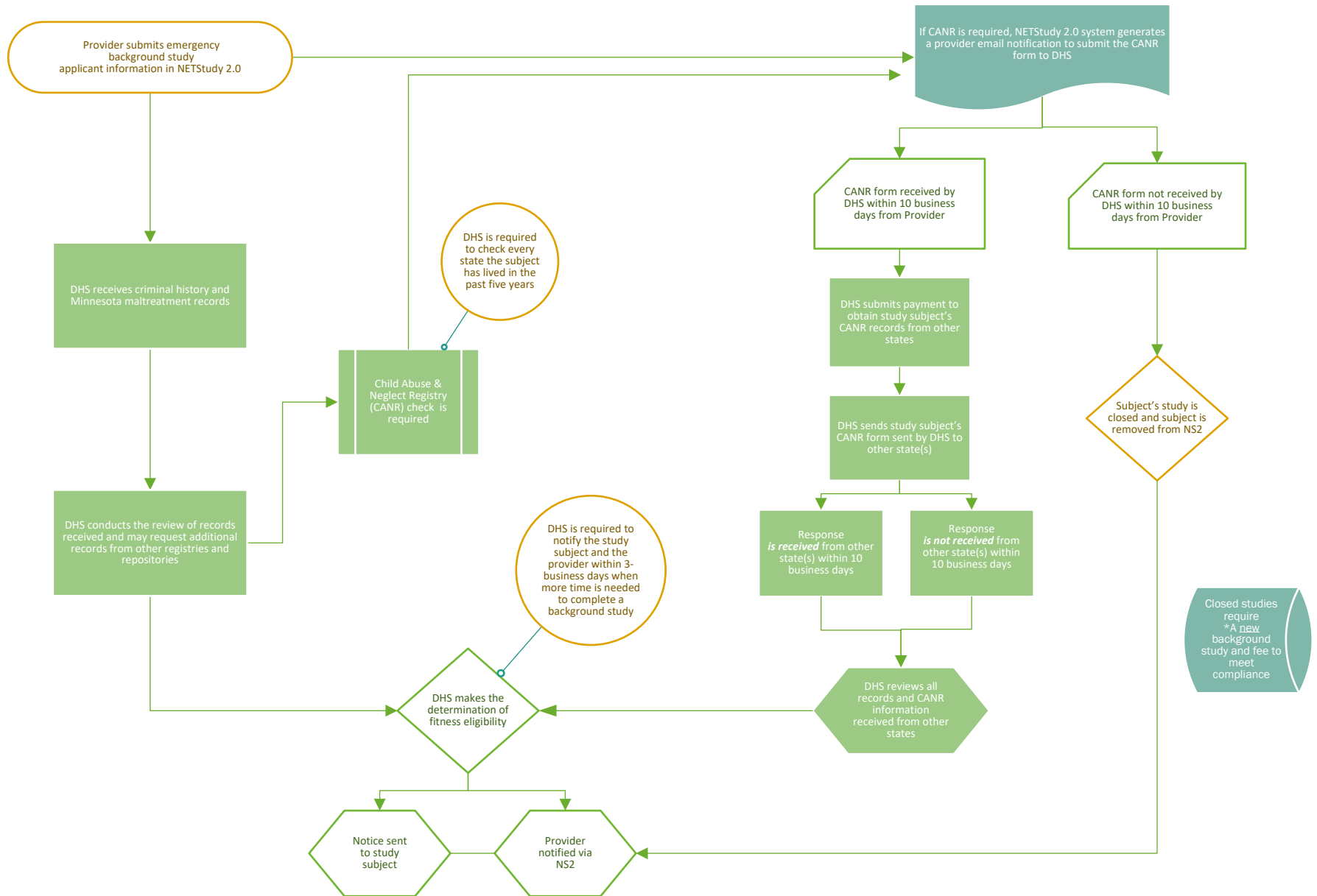


Emergency Background Study Process Map for Children's Residential Facilities (CRF) Studies



DHS receives ongoing notification alerts of new activity regarding study subject criminal history records, and/or other potentially disqualifying information. When additional information is received, DHS reviews those records to determine whether the information is disqualifying or not.

Sources include:
 MN Court Information System (Minnesota Court Integration Services)
 Referral information
 CANR information received from other states after 10-business days