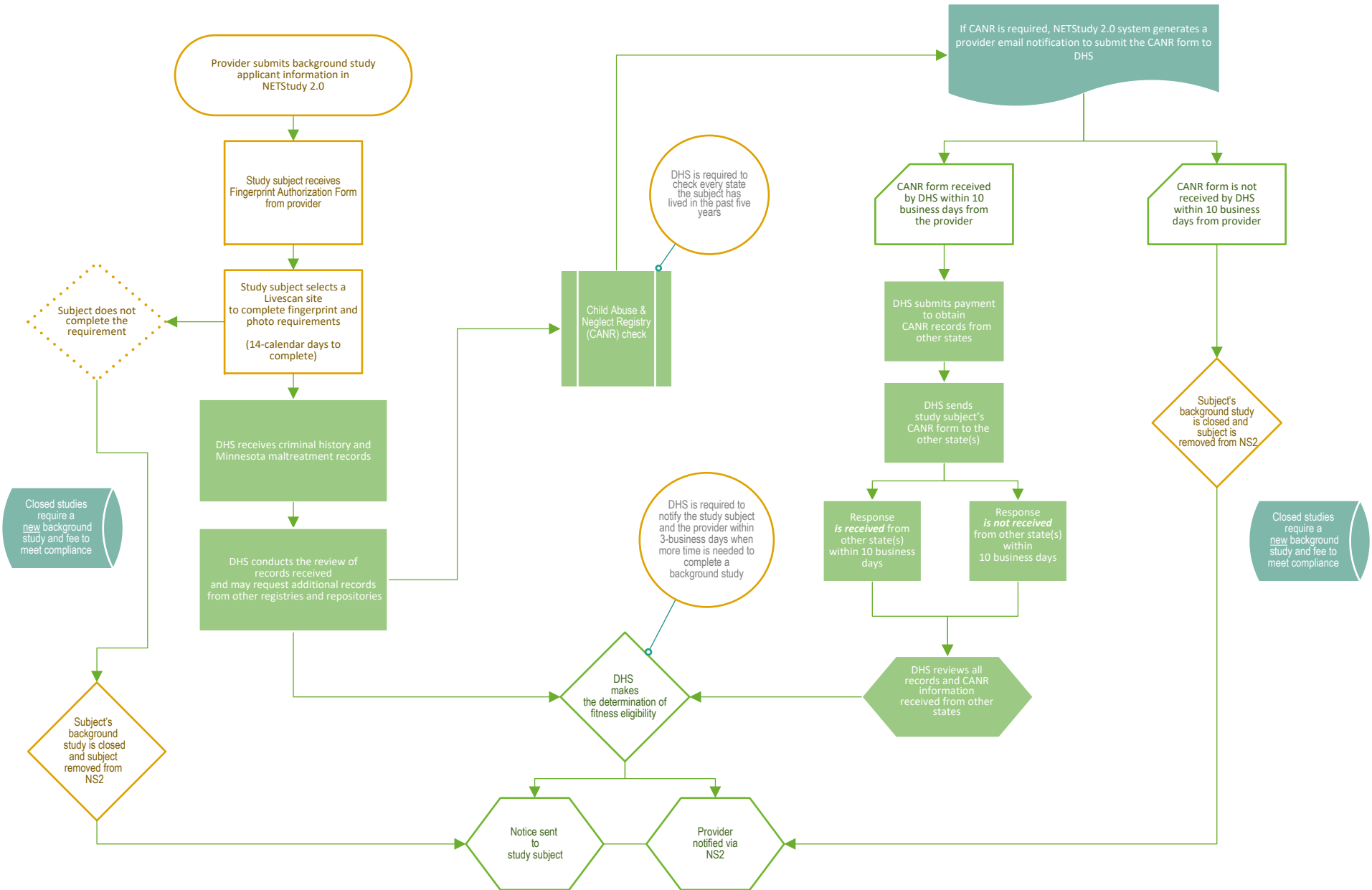


**Background Study Process Map  
for  
Children's Residential Facilities (CRF)**



DHS receives ongoing notification alerts of new activity regarding study subject criminal history records and/or other potentially disqualifying information. When additional information is received, it is reviewed to determine whether the information is disqualifying or not.

Sources include:  
 MN Court Information System (Minnesota Court Integration Services)  
 Referral information  
 CANR information received from other states after 10-business days