



A miniature log cabin built by Fred as a memorial to his parents. This replica of the cabin Fred grew up in is built with logs salvaged from the original homestead.



Directions

Francis Park is easily accessible from both I-74 and I-80. From I-74 take IL 78 exit north to Kewanee. From I-80 take IL 78 south to Kewanee. Take US 34 east out of Kewanee, 4 miles to Francis Park.

Francis Park is open May through September. Woodland Palace is open for tours every day of the season. There is a nominal fee charged to tour Woodland Palace.

Francis Park offers something for all family members. In addition to Woodland Palace, Francis Park has camping sites, party shelters, a spacious picnic area, playground equipment, ball diamond, and horseshoe court. There are also several walking trails through 40 acres of woodlands at the park.

An annual July 4th festival historically has included arts & crafts, ethnic food court, wagon rides and games for children, antique auto show, antique steam machinery, and free musical entertainment.

Francis Park Camping

60 RV spaces w/electricity
 Spacious tent area
 Water
 Free Firewood
 Dump Station

The lowest camping fees in the area, with 7th day free for weekly rental. Sorry, no reservations taken for camp sites.

Francis Park Facilities to Rent

For receptions, reunions, picnics, etc.

Enclosed Shelter

30' x 60', with stove, tables, screened doors & windows, refrigerator/freezer, electrical outlets and lights.

West Open Shelter

32' x 16' under roof, fixed grill, elect. outlets and lights.

East Open Shelter

24' by 16' underroof, elect. outlets and lights.

Shelters' Rental Periods

9:30am-3:30pm & 4:00pm-10pm, daily in season. No shelter rentals accepted for July 3-4-5. Reservations must be made at Kewanee City Hall. Rental fees very reasonable.

Phone Numbers

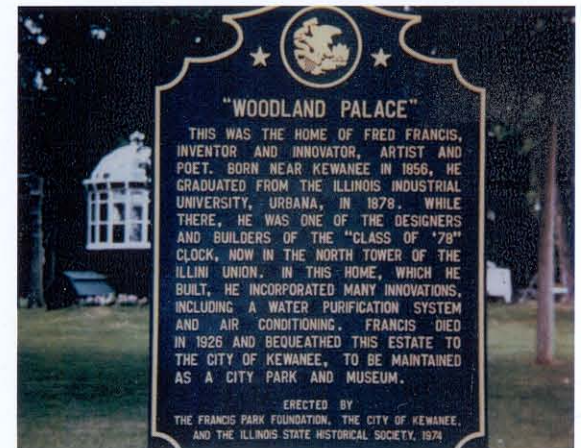
Kewanee City Hall: (309) 852-2611
 Francis Park Office: (309) 852-0511

Historic Francis Park

4 miles East of
 Kewanee, Illinois on Route 34



“WOODLAND PALACE”

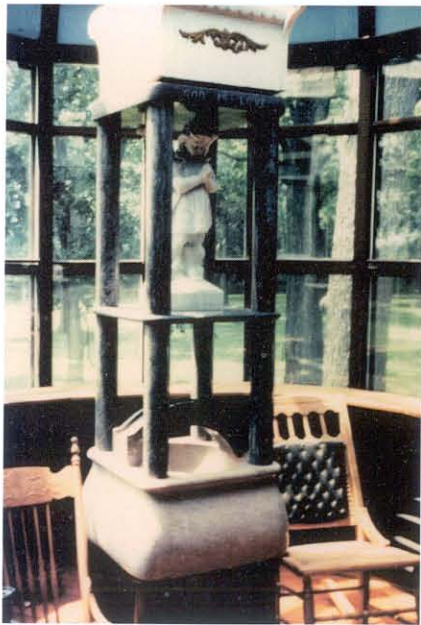


“Woodland Palace” was declared a State Historic Site in 1974 and placed on the National Register of Historic Places in 1975.

Fred Francis, a Leonardo da Vinci-like man, graduated from the University of Illinois in 1878. He was an inventor, mechanical engineer, mathematician, craftsman, artist, poet, nature lover, and above all an individualist.

In 1889 Fred began to build his unique house for himself and his wife Jeanette. The house, including the furniture, was designed and built entirely by Fred.

Wind, driving a windmill, was the sole source of power for the house. Fred used wind power to operate several fans in the house. One fan was used to heat beneath the floor boards in the basement. Another fan drew air from an underground tile and vented this cool air into the house. This was the first house in Illinois to be air-cooled. Fred fashioned window screens to rise automatically with the sash as well as built-in storm doors and windows.



The Solarium, built for his wife, Jeanie, who had tuberculosis, was designed so the air inside changed every 60 seconds.



To keep out insects and other pests, Fred built automatically opening and closing entrance doors.



The Coach Room was built to resemble a railway coach of Fred's time. It has long, narrow windows and mirrors. The chandelier was made of lamps taken from old coaches.



Fred's bicycle was his only means of transportation. Fred put a platform over the front wheel to carry supplies and provide a place for his wife to ride.



Fred was remembered for biking the nearly five miles east to Neponset to take Jeanie to church.



Fred designed and helped build and install the "Class of 78" clock at the University of Illinois. This clock was a gift to the University from Fred's graduating class.