

TOWN OF HOPKINTON



PHIPPS PROPERTY
Town of Hopkinton

Hopkinton Trail Guide



First Edition 2006

Supported by a grant from the William P. Wharton Trust

Hopkinton Open Space Preservation Commission

Open Space Trail Guide



Images from Lake Whitehall. (Photos by Brian Morrison)

Credits:

Cover photos by John Coolidge (front cover) and Andrea Underwood (back cover). Text by Ellen Chagnon, Conservation Scientist, Elaine Lazarus, Planning Director, and Brian Morrison, Conservation Commission, for Town of Hopkinton, and Community Opportunities Group, Inc. Photographs by Brian Morrison, Miles Crettien, John Coolidge, Don MacAdam, Brian Garrett, and Andrea Underwood. Trail locations verified in the field and GPS-documented by Hopkinton Open Space Preservation Commission, Hopkinton Girl Scout Troop 2245, Don MacAdam and Miles Crettien. College Rock trails courtesy of Beals & Thomas, Inc. GIS maps, design and production and editorial support by Community Opportunities Group, Inc. This publication was made possible by a grant from the William P. Wharton Trust to the Hopkinton Open Space Preservation Commission, John Coolidge, Chairman. The William P. Wharton Trust supports conservation study and appreciation of nature through projects with tangible and lasting results, those that seek partnerships and leverage funds to gain matching contributions.

ABOUT THIS GUIDE

Hopkinton is a recognized leader in open space protection. Through careful planning, land acquisitions, zoning, and working closely with state agencies and non-profit land trusts, Hopkinton has assembled an impressive inventory of open space: 4,700 acres, including 2,800 acres that are protected in perpetuity. The **Hopkinton Trail Guide** attests to the efforts of several generations of residents to protect the Town's natural resources and scenic views, to create open space links and corridors, and preserve the rural qualities that distinguish Hopkinton from most Boston-area suburbs.

All of the open space included in the **Hopkinton Trail Guide** is protected in perpetuity. The featured sites illustrate Hopkinton's long-standing conservation ethic and its tradition of working in partnership with other organizations. For example, the Whitehall State Park was protected more than 100 years ago, while the Town purchased the Phipps Property in 2003. The sites in this guide offer unique recreation opportunities and exemplify the variety of landscapes that contribute to Hopkinton's scenic beauty.

Saving Open Space

Hopkinton has found that protecting open space requires several conservation strategies and funding sources. Local residents and businesses donated some of the first parcels to the Conservation Commission and other sites were acquired through tax title. However, the Town has also purchased a considerable amount of land for conservation and recreation purposes and made excellent use of zoning to save open space by design. In 1988,

Hopkinton adopted an Open Space and Landscape Preservation Development (OSLPD) Bylaw that has been unusually successful. More than 70% of all new subdivisions during the 1990s were developed as OSLPD projects and together, they preserved more than 740 acres of open space.

In addition, conservation-minded residents established a local land trust in 1995. The private, non-profit Hopkinton Area Land Trust (HALT) purchases and manages land, and complements the Town's open space efforts through fundraising, providing outreach and education, constructing

trails, and negotiating with landowners. Later, Hopkinton created its own Open Space Preservation Commission and an Open Space Preservation Fund under Chapter 19 of the Acts of 1999. Since then, the Commission has focused exclusively on protecting open space and managing the Town's open space land holdings. The Commission helps

landowners by negotiating conservation restrictions and promotes conservation and recreation land purchases. More recently, Hopkinton voters adopted the Community Preservation Act (CPA) in 2001. Under CPA, Hopkinton receives a 2% surcharge on all real estate assessments. These funds may be used to buy open space, create affordable housing, and preserve or rehabilitate historic buildings.

Contact Information

The **Hopkinton Trail Guide** is a work in progress. As funds permit, the Open Space Preservation Commission will add new trails maps when the



Town acquires more land and blazes trails. Please contact the Conservation Commission (508-497-9757) or the Planning Department (508-497-9755) to make suggestions, volunteer, or inquire about preserving your property.

HOPKINTON'S NATURAL HISTORY

Geology and Topography

The Wisconsin glacier covered New England during the Pleistocene Epoch over 120,000 years ago and shaped Hopkinton's hills and valleys. The glacier's retreat 12,000 years ago left much of Hopkinton bedrock overlain by *glacial till*, or poorly-sorted material that includes sands, gravels, and rocks. The thin, rocky layer of topsoil results in poor farming conditions. Hopkinton's bedrock consists almost entirely of granite, and ledge outcroppings can be seen in many parts of town.

Hopkinton lies within three watershed basins: Blackstone, Sudbury and Charles Rivers. While most of the Town is within the Sudbury (Concord) watershed, the headwaters of the Charles River begin at Echo Lake in Hopkinton and Whitehall Brook feeds the Sudbury River. In general, Hopkinton's terrain slopes rather sharply toward four man-made water bodies: Whitehall Reservoir (575 acres) to the west, Hopkinton Reservoir (83 acres in Hopkinton) to the north, and Lake Maspenock (253 acres) and Echo Lake (105 acres in Hopkinton) to the south. Wetlands dot the topography and small streams run throughout Hopkinton.

Vegetation

The southern New England hardwood (or mixed deciduous) forest in Hopkinton consists primarily of red and white oak and white pine. The understory of this dense forest includes shrubs such as huckleberry, mountain laurel, sweet pepperbush,

viburnums, and witch hazel and herbs and vines such as wintergreen, Canada mayflower, partridge berry, wild sarsaparilla, ferns (many species), ground pine, cat briar, and wild grape.

The appearance of the forest and the makeup of its vegetation change with elevation, soils, and moisture. The lakes, ponds and streams are generally surrounded by red maple swamp, including species such as highbush blueberry, swamp azalea, viburnum, winterberry, skunk cabbage, touch-me-not, sphagnum moss and red maple. Beware of poison ivy in the transition areas between wetland and upland.

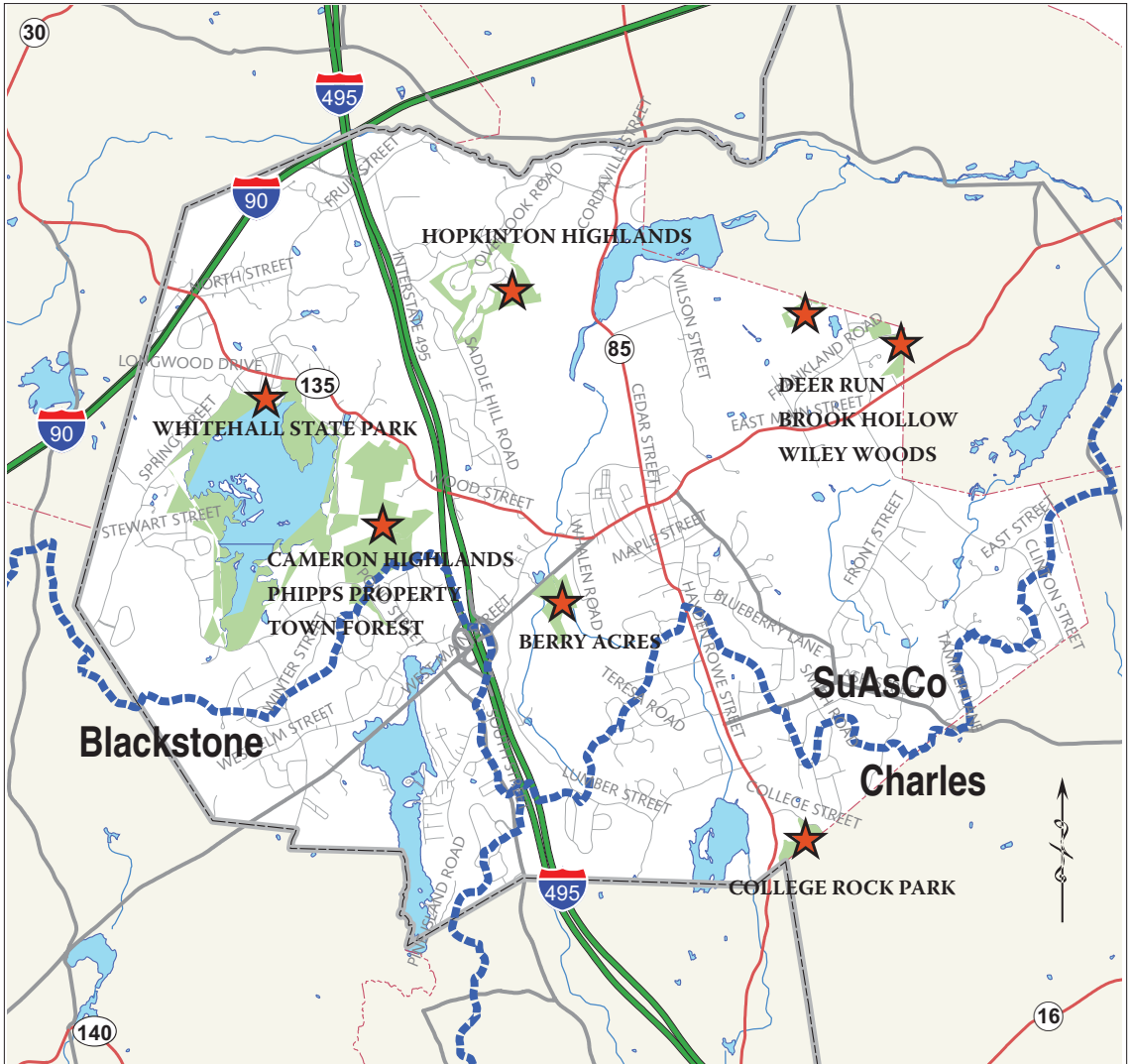
Wildlife

The mammal species typically present in Hopkinton's woodlands and wetlands include white tail deer, coyote, red and gray fox, raccoon, skunk, possum, gray squirrel, woodchuck, chipmunk, eastern cottontail, porcupine, muskrat, beaver, mice, and voles. People occasionally see fisher, bobcat and river otter as well, but all three are elusive. Songbirds, water birds, and birds of prey abound in the wild areas of town, and wild turkey populations are on the rise. Several residents have reported bald eagle sightings in the vicinity of Lake Whitehall.

In the winter and spring, *vernal pools* can be seen in the wetlands throughout Hopkinton. These ephemeral ponds dry up in the summer and fall. Vernal pools serve as nurseries for wood frogs, and spotted and marbled salamanders, and as permanent homes for fairy shrimp, fingernail clams, and many other invertebrates. The "quacking" call of wood frogs and the high-pitched peep of the tiny spring peeper signify proximity to vernal pools. Please treat these fragile treasures with care.

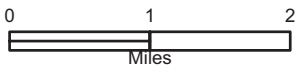
Common species of reptiles and amphibians in Hopkinton include garter snake, water snake, snapping and painted turtles, bullfrog, green frog,

HOPKINTON TRAIL GUIDE



HOPKINTON Open Space Trail Guide

November 2005



- ★ FEATURED SITES
- Watershed Basins
- County
- City or Town
- Open Water
- Rivers & Streams
- Limited Access Highway
- Other Multi-lane Highway
- Other Numbered Highway
- Major Road, Collector

Map by Judith A. Barrett

Data Sources: MassGIS, Town of Hopkinton

spring peeper, American and Fowlers toads, and striped and red salamanders. Uncommon, rare or threatened wildlife species include damselfly and dragonfly species, wood duck, pheasant (stocked), osprey, turkey vulture, flying squirrel, spotted and mole salamanders, wood turtle, box turtle, spotted turtle, weasel and purple tiger beetle.

BERRY ACRES

Conservation History

Hopkinton acquired a portion of the Berry Acres property in 1968 when an anonymous donor sold the land to the town for \$1.00. Boston Edison, now NSTAR, later donated some adjacent land to expand the preserve. The Hopkinton Conservation Commission manages this 29-acre site.

Ecological Significance

Berry Acres is located within the Indian Brook-Sudbury River Watershed. Extensive wooded swamp, intermittent streams, a small pond and vernal pools characterize the landscape. Look for the pond near the preserve entrance on West Main Street and a vernal pool close to the trail head. Abundant spring wildflowers include gay-wings, *Polygala paucifolia*, which resembles a small purple bird. In the spring, listen for wood frogs near the vernal pool.

Visiting Berry Acres

Visit Berry Acres year round from dawn to dusk. Hikers, non-motorized bikers, horses and dogs will enjoy the easy 1.1-mile trail. There are no facilities for picnicking or camping. Be cautious of trails blazed on adjacent private property. Please do not wander off Town-owned property without permission from the adjacent landowner.



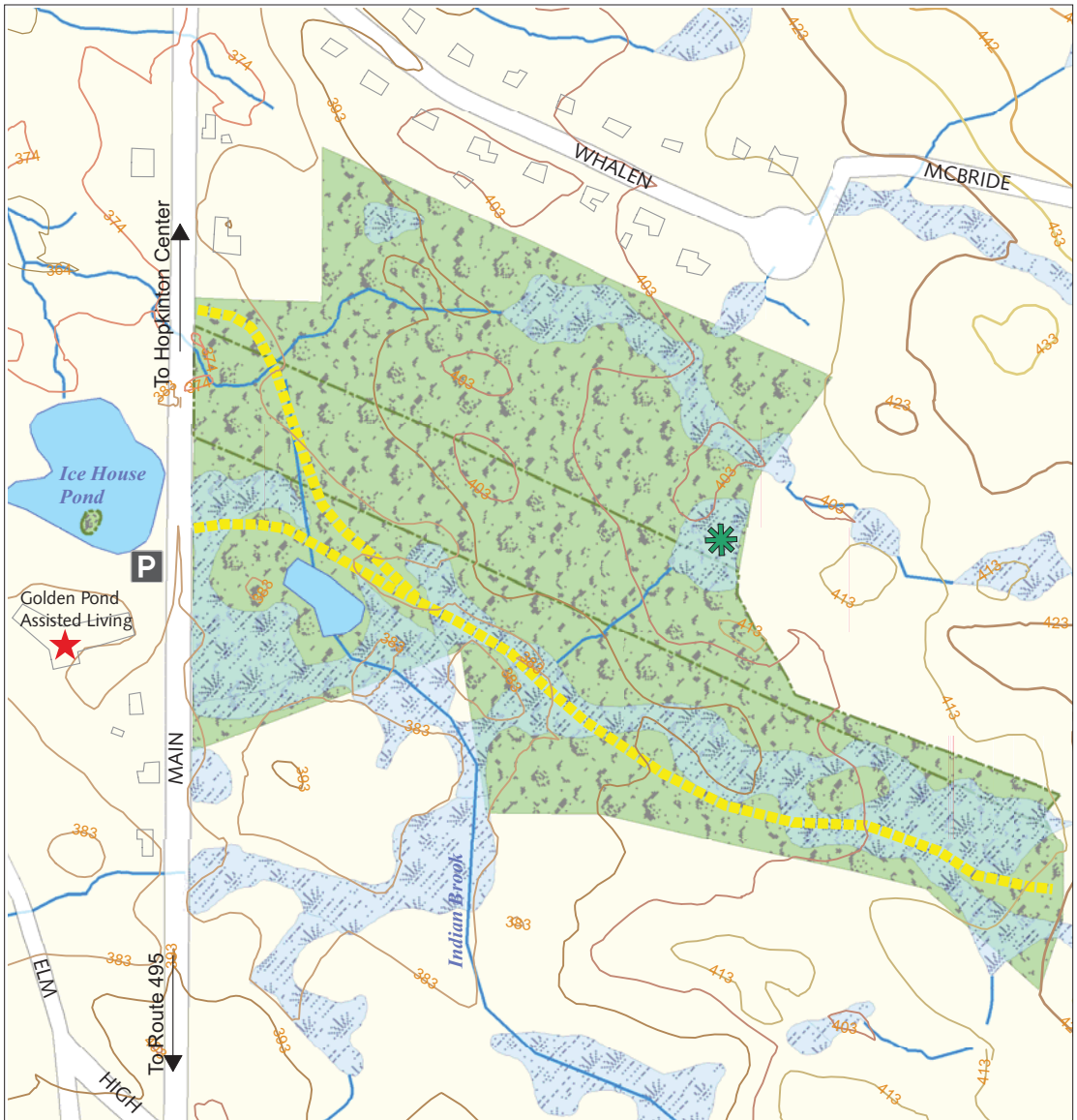
Vernal pool at Berry Acres. (Photo by Miles Crettien)

Visitors may also hike the loop trail around Ice House Pond, located across West Main Street, and follow the path to the gazebo. The Town owns the small parking lot adjacent to Ice House Pond and the site of the ice house foundation. Hopkinton is restoring the old Hopkinton Railroad Station for historical display and for use as a warming hut by ice skaters.

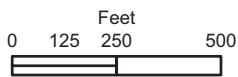
Directions and Parking

From the intersection of Routes 135 and 85 in Hopkinton center, follow Main Street west and bear left onto West Main Street. Follow West Main Street 0.9 miles. Berry Acres is on the left across the street from Ice House Pond and the Golden Pond Residential Care Facility. Berry Acres has 4 parking spaces and more spots are available across the street at Ice House Pond. The trailhead is marked "Berry Acres" at the parking area.

HOPKINTON TRAIL GUIDE



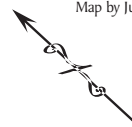
BERRY ACRES



- Open Water
- Wetlands (Approximate)
- Streams & Brooks
- NHESP Potential Vernal Pool

- Trail
- Parking

Map by Judith A. Barrett



Data Sources: Town of Hopkinton, MassGIS

COLLEGE ROCK PARK

Conservation History

Hopkinton acquired the 11-acre College Rock Park in 1962, when an anonymous donor sold the land to the Town for \$1.00. The Conservation Commission manages the site, which abuts Holliston's 162-acre Rocky Woods. Holliston Eagle Scout Mark D'Agostino developed a preserve sign, map and picnic area near the Hopkinton entrance and blazed several trails that traverse these properties in Hopkinton and Holliston.

Ecological Significance

College Rock Park is located within the Beaver Brook-Charles River Watershed. The Towns of Hopkinton, Holliston and Milford, along with the Hopkinton Area Land Trust, the Trustees of Reservations and Massachusetts Audubon Society, have worked to protect land in this important region because it encompasses the headwaters of the Charles River. The site is characterized by dry woods with large granite outcroppings and boulders. In fact, College Rock Park takes its name from *College Rock*, the large bedrock outcrop near the Hopkinton entrance. Small complexes of wooded swamp border the intermittent streams that run through the property. Observe the stand of chestnut oak near College Rock and look for orioles, hairy woodpeckers and red-tailed hawks.

Visiting College Rock Park

Visit College Rock Park year round from dawn to dusk. Hikers, non-motorized bikers, horses and dogs are welcome. Rock-climbers and mountain bikers often visit College Rock Park to climb College Rock and bike the surrounding trails. Inexperienced climbers and bikers should have guides, especially on the Holliston side of the trail system.



Woodpecker busy at work in Hopkinton's densely forested open space. (Photo by Miles Crettien)

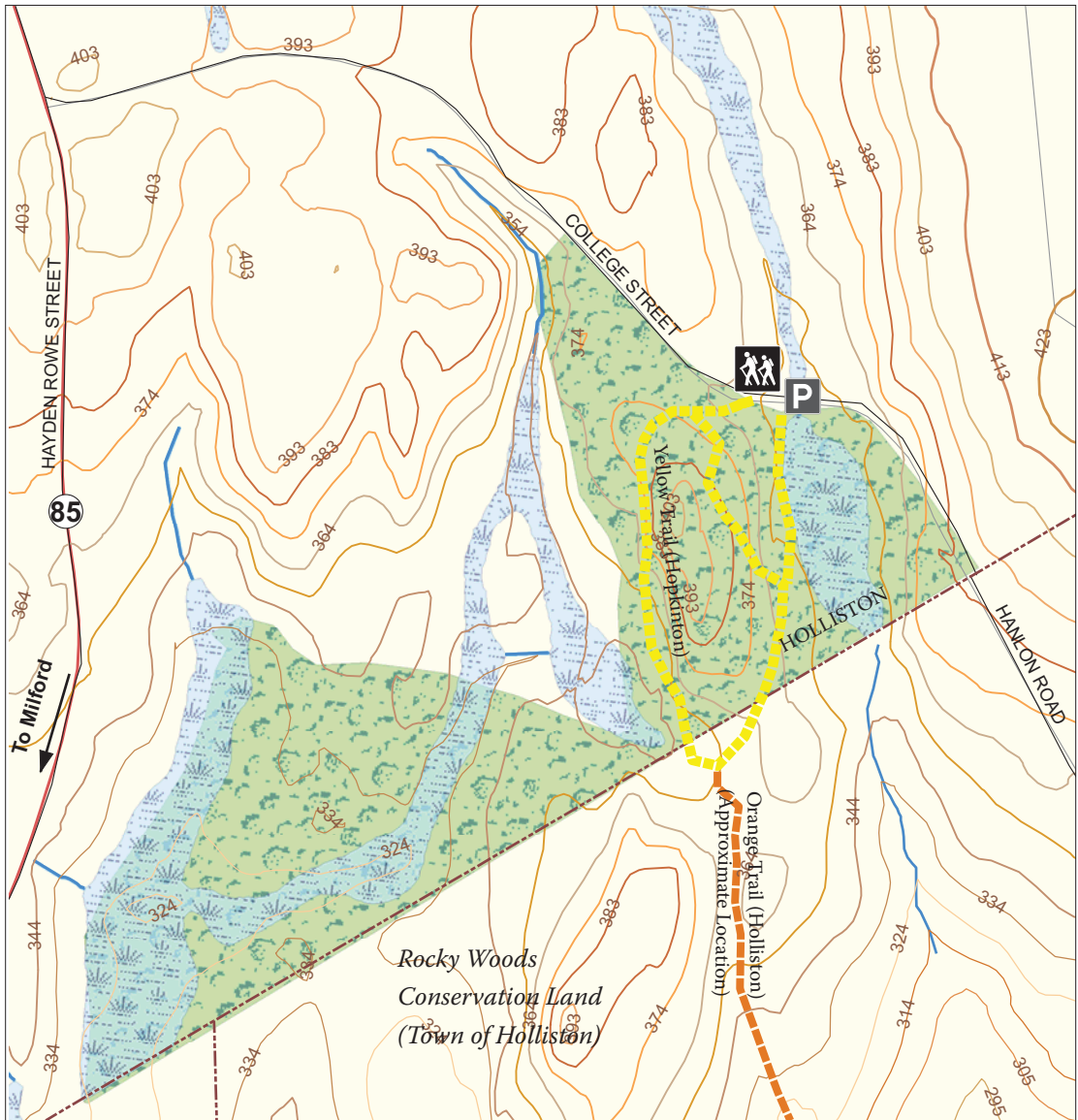
Four well-marked trails – Yellow, Orange, Red and Green – offer visitors the choice of a short, easy walk or more strenuous hikes. The 0.3-mile Yellow Trail is the shortest, looping the Hopkinton portion of the site around College Rock and the stand of chestnut oak. The longer trails cross from Hopkinton into Holliston. All four trails begin at the trail head near the parking area in Hopkinton. There are no facilities for picnicking or camping.

Be cautious of trails blazed on adjacent private property. Please do not wander off Town-owned land without permission from the adjacent landowner.

Directions and Parking

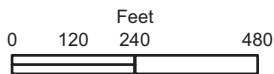
From the intersection of Routes 135 and 85 in the center of Hopkinton, follow Route 85 (Grove Street/Hayden Rowe Street) south for 2.2 miles. Turn left on College Street and follow 0.2 miles to the marked trailhead just before Beaver Brook. There is parking for six cars.

HOPKINTON TRAIL GUIDE



Map by Judith A. Barrett

COLLEGE ROCK PARK



--- Municipal Boundary

Open Water

Wetlands (Approximate)

Streams & Brooks

College Rock-Rocky Woods Trails

Yellow

Orange

Data Sources: Town of Hopkinton, MassGIS, Beals & Thomas.

Note: the Holliston portion of this trail system is a conceptual representation shown here for illustrative purposes only.

WHITEHALL STATE PARK

Conservation History

In 1894, the Commonwealth of Massachusetts created Whitehall State Park (also known as Lake Whitehall and Whitehall Reservoir) by taking the land to create a new public reservoir. Two years later, the state dammed Whitehall Brook on Highland Street and flooded three ponds, to impound Lake Whitehall. For many years, Lake Whitehall served as a drinking water supply managed by the former Metropolitan District Commission (MDC), but it was eventually reclassified as a reserve drinking water source for periods of severe drought. Today, the 920-acre Whitehall State Park surrounds and includes 575-acre Lake Whitehall. The Massachusetts Department of Conservation and Recreation (DCR) owns and manages the park.

Ecological Significance

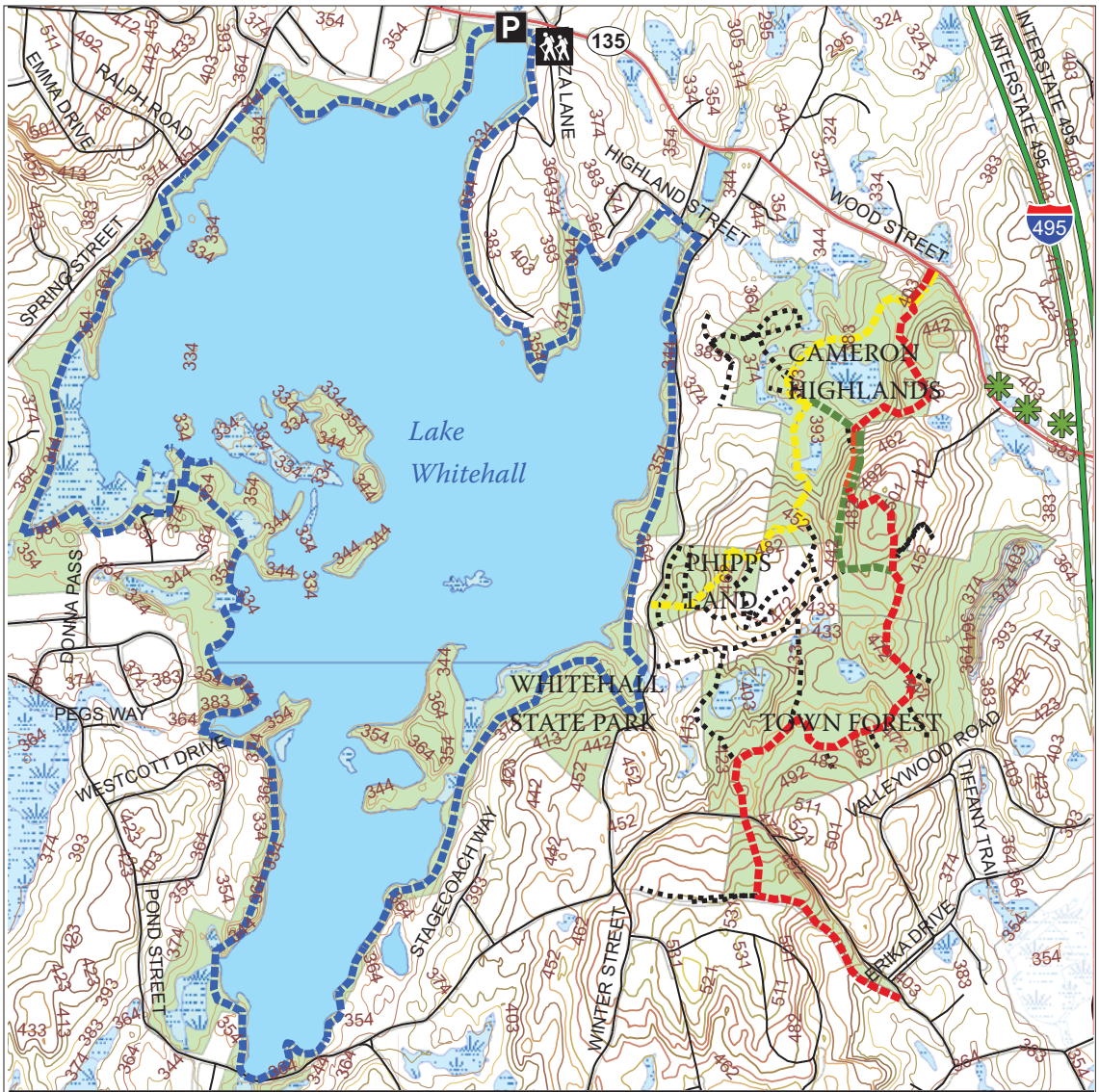
From 75,000 to 20,000 years ago in the Pleistocene Epoch, a continental glacier advanced southward, covering Hopkinton and all of New England in ice a mile or more thick. As the glacier melted, large quantities of *stratified drift* were deposited in streambeds and lakes. When glacial ice melted in the valley that now contains Lake Whitehall, sand and gravel accumulated on and alongside the ice. Today, remnants of these ice-contact outwash deposits exist as hills (*kames*) that form islands in the reservoir, and some sinuous ridges (*eskers*) along the lake's western side. The Pond Street public water supplies also tap water-saturated sand and gravel deposits just south of Lake Whitehall.

At a later point during the retreat of the ice sheet, a large, glacial lake formed from melt water in the general vicinity of the present Whitehall Reservoir. As melt waters flowed into the north







Pictures from Lake Whitehall (top to Bottom): Autumn vista; restored Whitehall dam; band of turtles sunning on a log. (Photos by Brian Morrison)

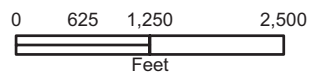
HOPKINTON TRAIL GUIDE



Map by Judith A. Barrett

WHITEHALL STATE PARK

-  Open Water
-  Lake Whitehall Trail
-  Streams & Brooks
-  NHEP Certified Vernal Pools
-  Wetlands (Approximate)



Data Sources: Town of Hopkinton, MassGIS.



end of the lake, a large delta of sand was deposited at the northwest corner. It can still be seen along Wood Street as a flat terrace with homes and the Evergreen Cemetery, and the peninsula that extends into Whitehall Reservoir by Piazza Lane. When the ice retreated northward out of the Sudbury River basin, sediments of sand and gravel were deposited as ice melted out from beneath them. These deposits formed the Town's water-saturated aquifer at Fruit Street and the area surrounding Whitehall Brook.

Whitehall State Park is located within the Whitehall Brook-Sudbury River Watershed. Southern New England hardwood forest with pockets of shrub and wooded swamp characterize the landscape around Lake Whitehall. Look for vernal pools in the ice block depressions surrounding the lake, and beaver and muskrat along the shoreline. In addition, Lake Whitehall contains many floating islands (referred to locally as "quags," which is probably short for quagmire). Loosely tethered to the lake bottom in shallow areas, these islands exhibit a vegetation community similar to that found in quaking bogs. Sphagnum moss forms the basis of the islands, and as it accumulates, species such as red maple, larch, black spruce, bog rosemary, leatherleaf, waterwillow, and Virginia chain fern take root. Poison sumac, a gangly shrub, abounds on the islands at Lake Whitehall. Be careful if you are kayaking.

The Massachusetts Natural Heritage and Endangered Species Program (NHESP) has designated Whitehall State Park, including the reservoir, as Core Habitat and the extensive cedar swamp and associated wetlands to the southwest as Critical Supporting Watershed. The cedar swamp is part of a Massachusetts Area of Critical Environmental Concern (ACEC) because of the quality and uniqueness of its natural and historical resources. Take note of a fine example of Atlantic

white cedar swamp on private land in the area between Spring and Pond Streets opposite Lake Whitehall. NHESP has also observed several rare dragonfly species at Lake Whitehall.

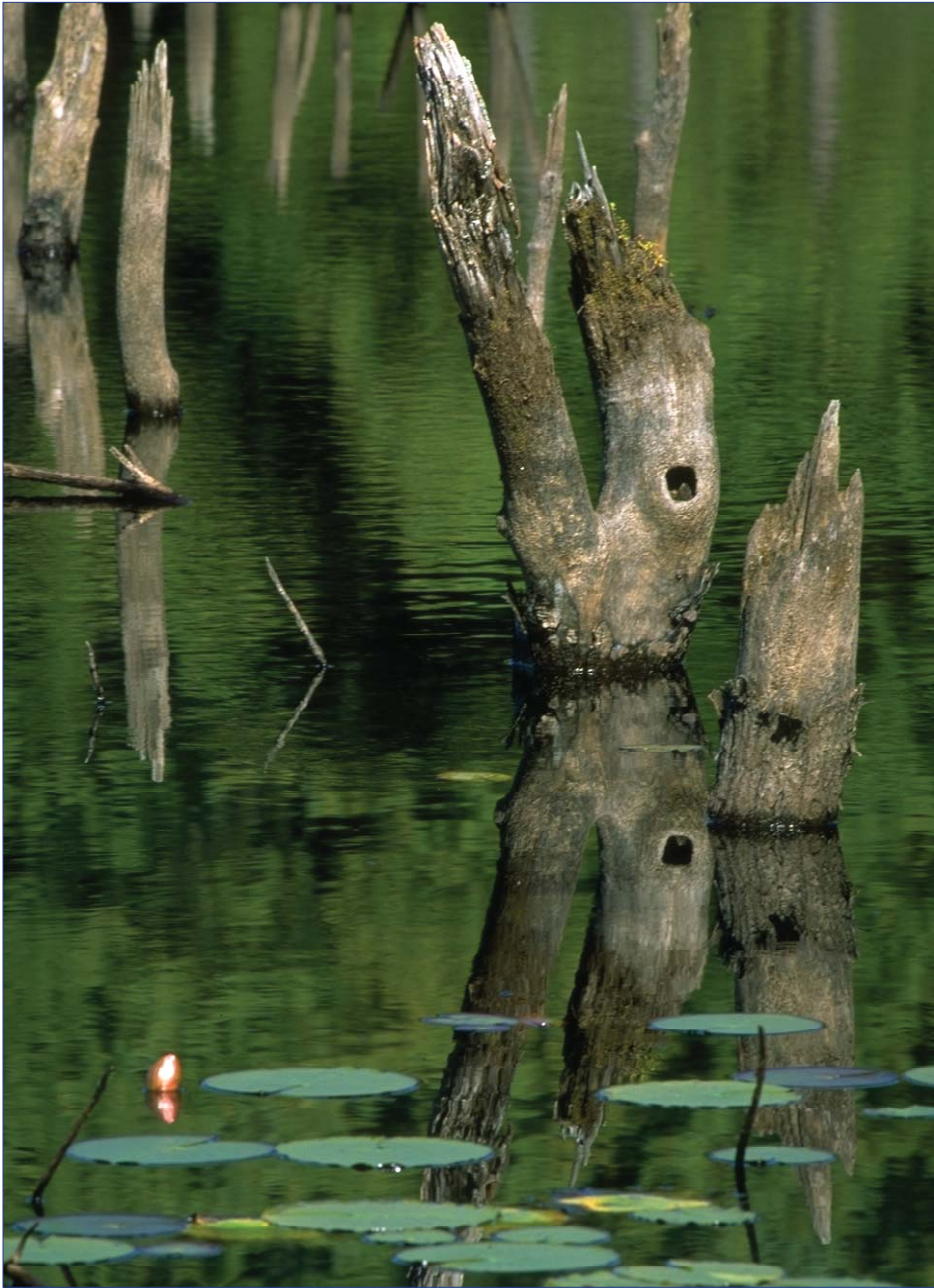
Whitehall State Park also has historically significant resources nestled in the woods. During the first half of the nineteenth century, before Lake Whitehall was impounded, a resort area developed around the supposed healing springs and mineral baths along Whitehall Brook in the vicinity of Norcross Road off Spring Street. Visitors came by stagecoach to the Hopkinton Hotel on Spring Street across from present-day Lyford Road. Extant spring structures remain in the woods off the end of Norcross Road.

Visiting Whitehall State Park

Visit the preserve year round from dawn to dusk. Hikers, non-motorized bikers, horses and dogs are welcome. An undulating, 6.2-mile trail marked with "State Park" blue blazes loops around Lake Whitehall through mixed deciduous woods and offers frequent views of the lake. Look for prominent glacial erratics (boulders) and extant foundations, chimneys and stone walls along the trail. This fairly shallow lake is an excellent place to fish. The Commonwealth allows canoes, kayaks and small power boats. There are no lakeshore beaches and camping facilities. Be cautious of trails blazed on private property. Please do not wander off state land without permission from the property owner.

Directions and Parking

From the intersection of Routes 135 and 85 in the center of Hopkinton, follow Route 135 (Main Street/Wood Street) west for 2.9 miles. The Commonwealth's boat ramp and 50-car parking lot is on the left just past Piazza Lane. Additional parking is available along Winter, Spring and Pond Streets. The trailhead begins at the parking lot on Wood Street.



Wetlands adjacent to Lake Whitehall. (Photo by Brian Morrison)

CAMERON HIGHLANDS PHIPPS PROPERTY

Conservation History

Cameron Highlands and the Phipps Property offer an interconnected trail system that links to other trails in the Town Forest. Located east of Winter Street opposite Lake Whitehall, the 126-acre Cameron Highlands property was purchased by the Town in 2001 and the 7-acre Phipps Property, in 2003. These acquisitions were supported by the Open Space Preservation Fund and the Community Preservation Act. The Hopkinton Open Space Preservation Commission manages both sites.

Ecological Significance

Cameron Highlands and the Phipps Property are located within the Whitehall Brook-Sudbury River Watershed, between Wood and Winter Streets east of Lake Whitehall. A dense, southern New England hardwood forest covers both sites, with pockets of wooded swamp that help to protect the water quality in Lake Whitehall. Virtually all of the land in this part of Hopkinton functions as Supporting Natural Landscape for habitat areas (Core Habitats) that support rare species and a variety of natural communities.

Visiting Cameron Highlands-Phipps

Visit these properties year round from dawn to dusk. Hikers, non-motorized bikers, horses and dogs are welcome. Cameron Highlands offers a variety of recreation opportunities. Rolling hills characterize the landscape, and there are wide trails for hiking, snowshoeing, cross-country skiing and horseback riding. Elevations range from about 350 to 510 feet Mean Sea Level (MSL). Hopkinton Eagle Scout Nick Nigro blazed a figure-eight trail and the trailhead is marked "Cameron Highlands Trail" on Wood Street. Hopkinton Girl Scout Troop #2245



Trails through the forest : Phipps property on Winter Street.
(Photo by John Coolidge)

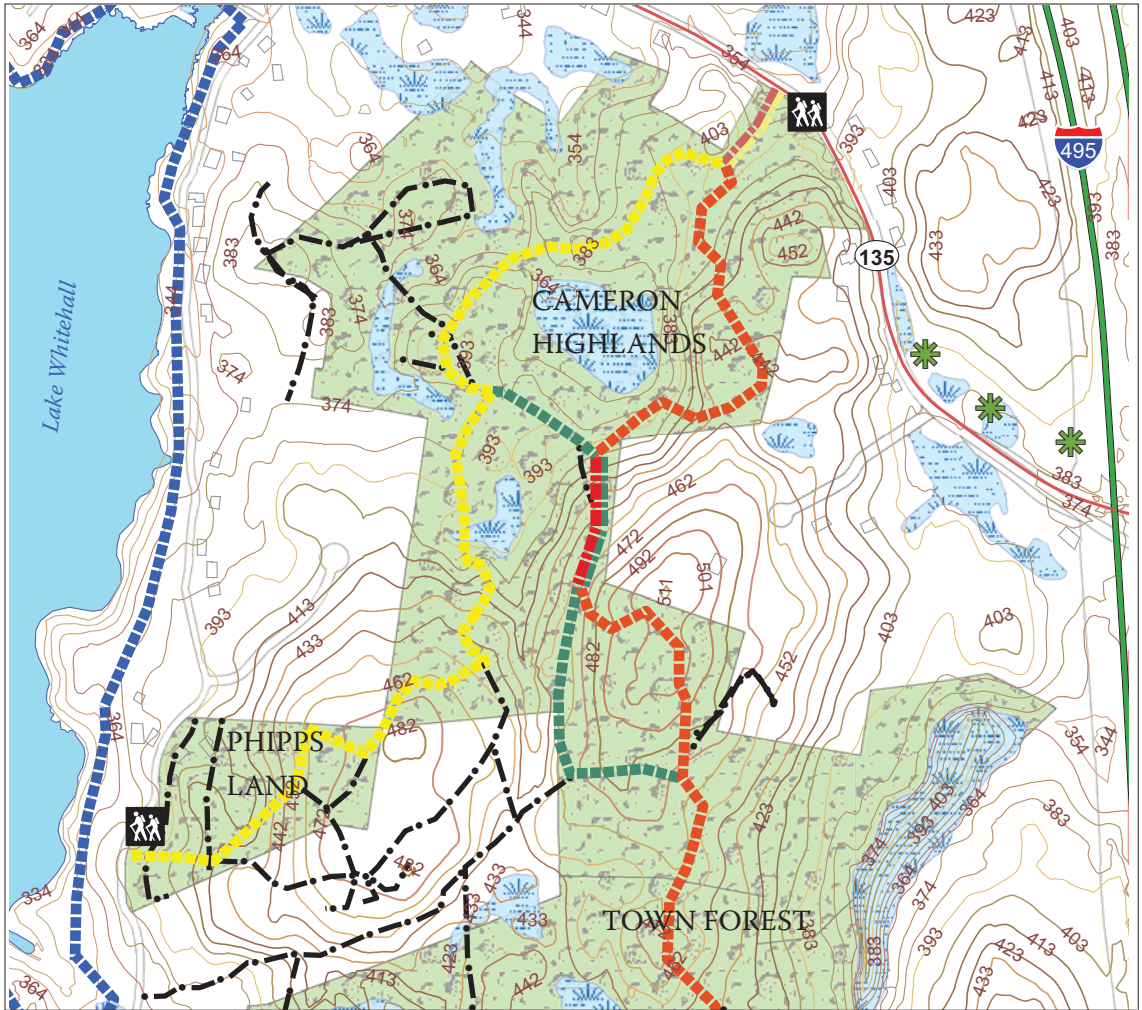
has also assisted with marking trails throughout the property. Look for granite outcroppings and hemlock groves. On the Phipps land, a short, easy 0.5-mile trail traverses the site and connects to trails at Cameron Highlands and the Town Forest.

Both sites abut private property. Cameron Highlands shares a boundary with a private horse farm with an agility course, and the Phipps family still owns land on Winter Street, including land with blazed trails. Please do not wander off Town-owned property without permission from the adjacent landowner.

Directions and Parking

To reach the Cameron Highlands trail head, follow Route 135 (Main Street/Wood Street) west for 2.1 miles from the intersection of Routes 135-85 in Hopkinton center. The trail head is on the left at the curve in the road after 157 Wood Street. Access to the Phipps property is on Winter Street, a left turn off Route 135 approximately 0.3 miles from the entrance to Cameron Highlands. Follow Winter Street for 0.9 miles. The Phipps property is on the left. Visitors may park along Winter Street.

HOPKINTON TRAIL GUIDE



Map by Judith A. Barrett

CAMERON HIGHLANDS-PHIPPS

- | | | |
|------------------------------|-----------------------------------|----------------------|
| Open Water | Cameron Highlands-Phipps Land | Red Yellow (Overlap) |
| Streams & Brooks | Lake Whitehall Trail (State) | Green |
| Wetlands (Approximate) | Cameron-Phipps-Town Forest Trails | Red Green (Overlap) |
| NHESP Certified Vernal Pools | Yellow | Unmarked |
| | Red | |

Data Sources: Town of Hopkinton, MassGIS.
Cameron-Phipps trail system delineated in the field by
Hopkinton Girl Scout Troop 2245 (November 2005).



HOPKINTON AREA LAND TRUST

The Hopkinton Area Land Trust (HALT) is a non-profit conservation organization that works with the Town to protect open space through fee acquisition and conservation restrictions. HALT hopes to develop a greenway around Hopkinton. Toward this end, HALT has helped to protect 85 acres at Brook Hollow, Deer Run, Wiley Woods and Hopkinton Highlands I, and plans to protect another 60 acres at Hopkinton Highlands II. HALT opens its land to the public for passive recreation such as walking, hiking, snowshoeing and cross-country skiing. Its volunteers manage almost 600 acres of open space that Hopkinton has saved mainly as a result of OSLPD plans approved by the Planning Board.

Brook Hollow

The DeGozzaldi Family donated the 12-acre Brook Hollow site to HALT. Hopkinton Eagle Scout Dan Newbrander blazed the 0.5 mile trail that memorializes Susan M. DeGozzaldi. Look for two majestic American beech trees on this property. Horses are welcome at this preserve, which is bordered by Frankland Road and Cross Street.

Deer Run

The Lakeside Construction Company gave 17 acres at Deer Run to HALT. A particularly beautiful 1.0 mile trail named in memory of Amy and Rolf Andersen traverses the property. It begins at a trail head on Fawn Ridge Road and exits at the opposite end of the cul-de-sac. Northborough Eagle Scout Eric Pfeifer blazed the trail and constructed the footbridge, two benches, several birdhouses and signs naming the plant species. Parking is available on Fawn Ridge Road. Horses are welcome.

Wiley Woods

Developer Ron Roux donated 16 acres on Frankland Road near the Ashland town line to create Wiley

HALT'S Goals

To preserve, protect, conserve, and enhance the natural resources within and around the town of Hopkinton, Massachusetts, including water resources, marshlands, swamps, woodlands, underground water supplies, open spaces, land areas of historical significance, and wildlife habitat, in order to maintain and improve the quality of life in the town of Hopkinton for present and future generations.

To educate the public in the area of conservation, ecology, forestry practices, wildlife preservation and land use planning in order to protect open space, plant, and animal life therein.

To encourage and facilitate the use of land conservation, recreation, and wildlife preservation by cooperating with the town of Hopkinton, its elected officials and committees, Hopkinton landowners, and other individuals and organizations having similar purposes.

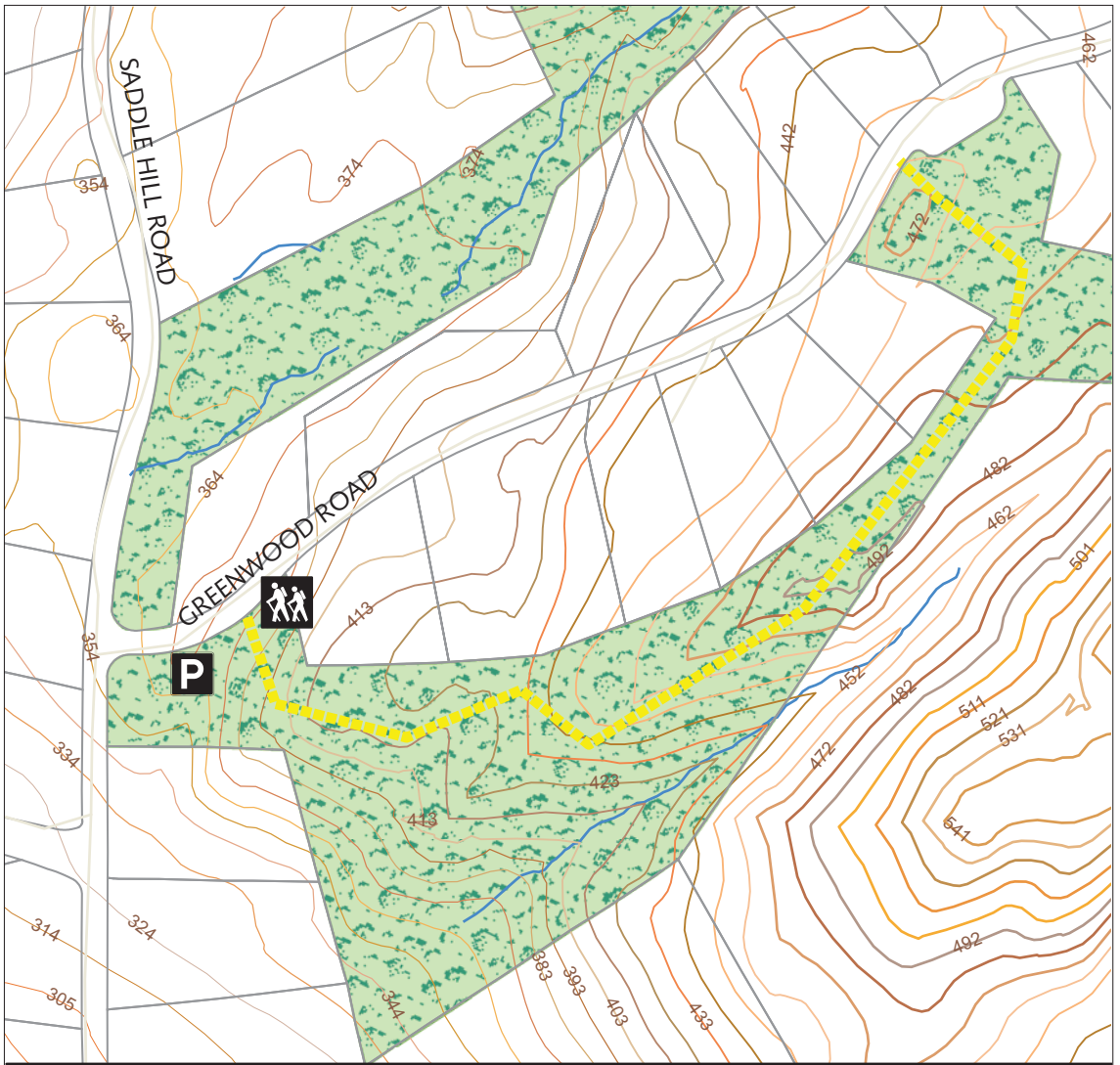
To acquire, hold, maintain, and enforce such conservation and preservation restrictions, easements and other interests in land, water areas, and structures as it deems appropriate and in the public interest.

Woods. A 0.8-mile trail takes visitors past several vernal pools and southern New England hardwood forest. The Wiley Woods trailhead is on Frankland Road about 200 feet east of Brook Hollow. A small parking area is located at the trailhead.

Hopkinton Highlands I

The Lodge Corporation contributed 40 acres to HALT to create Hopkinton Highlands I at the intersection of Greenwood Road and Saddle Hill Road. The 0.75 mile Douglas B. Sands Trail begins at the intersection. Mr. Sands, a long-time Hopkinton resident and noted ornithologist, was recently named Man of the Year by the Massachusetts Audubon Society. Look out at the scenic Chuck Zettek Overlook on Greenwood Road, which provides a 10-12 mile view to the west. Parking is available behind the boulder at the trailhead.

HOPKINTON TRAIL GUIDE



HALT

Hopkinton Highlands I

Douglas B. Sands Memorial Trail

Saddle Hill Road/Greenwood Road

Note: see foldout map for other HALT properties.

0 125 250 500



■ ■ ■ ■ ■ HALT Trails

~~~~~ Streams

● ● ● ● ● HALT Land

Map by Judith A. Barrett



Data Sources: Town of Hopkinton, MassGIS.



# Hopkinton Open Space Preservation Commission

## *Hopkinton Trail Guide*



BROOK HOLLOW  
Hopkinton Area Land Trust