



**Erie County
Department of
Health**



Public Health
Prevent. Promote. Protect.

UPDATE ON COVID-19 FOR ERIE COUNTY CITY, TOWN AND VILLAGE LEADERS

March 12, 2020

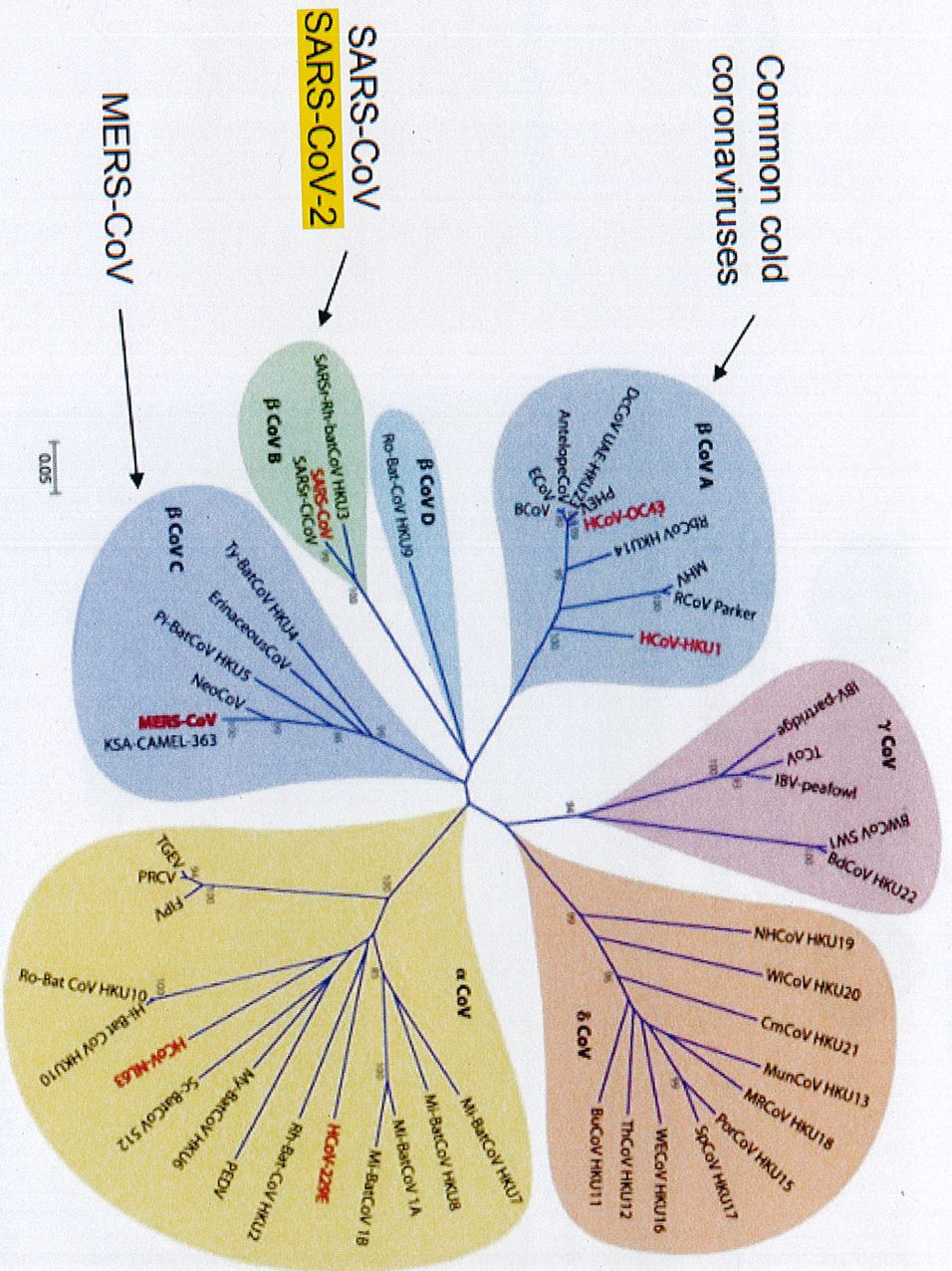
- As a reminder, the information on the PowerPoint is current only as of the date of the presentation (unless otherwise noted).
- The situation is rapidly evolving and for the latest numbers and/or guidance, please reference the links within the presentation or visit www.erie.gov/covid19



Erie County
Department of
Health



Public Health
Prevent. Promote. Protect.



Erie County
Department of
Health



Public Health
Prevent. Promote. Protect.



NEW YORK
STATE
Department
of Health

Situation Summary: COVID-19 Global

SITUATION IN NUMBERS

total and new cases in last 24 hours

Globally
118 322 confirmed (4623 new)
4292 deaths (280 new)

China
80 955 confirmed (31 new)
3162 deaths (22 new)

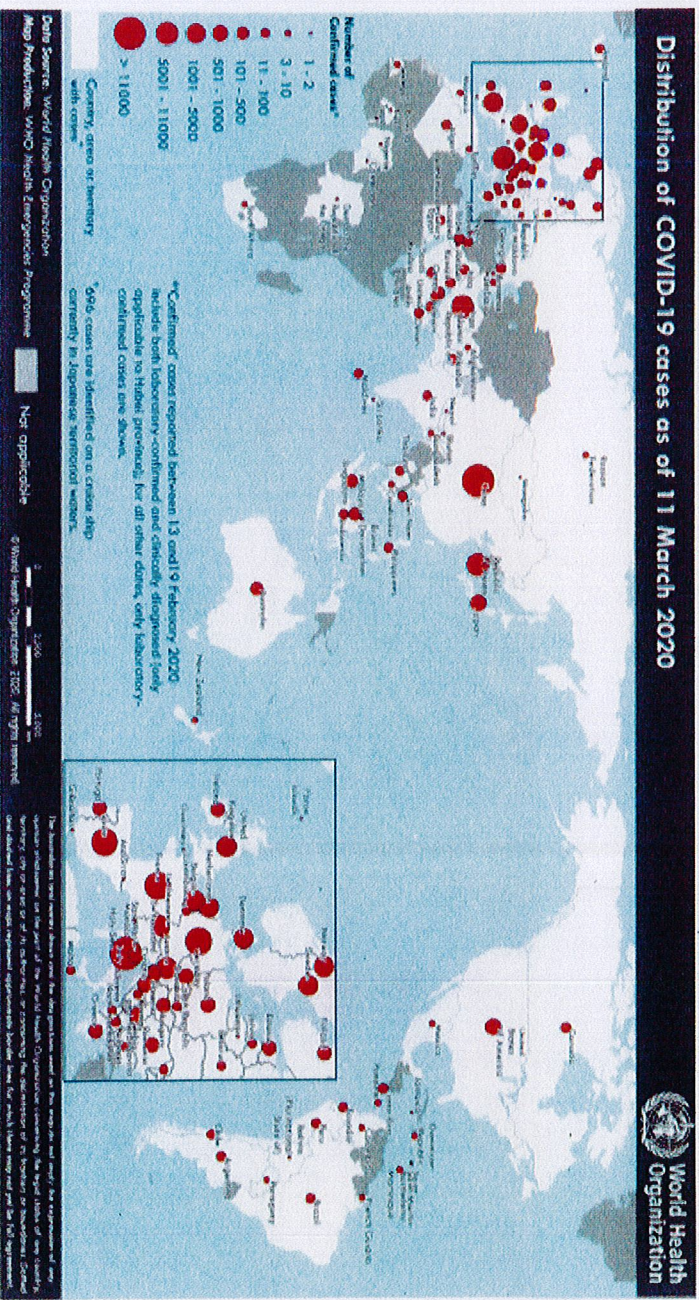
Outside of China
37 367 confirmed (4592 new)
1130 deaths (258 new)
113 countries/territories/
areas (4 new)

WHO RISK ASSESSMENT

China Very High
Regional Level Very High
Global Level Very High

Erratum: Total cases and new cases for Bulgaria have been corrected.

Figure 1. Countries, territories or areas with reported confirmed cases of COVID-19, 11 March 2020



WHO: Data as reported by national authorities by 2:00 AM CET 11 March 2020



Public Health
Prevent. Promote. Protect.

Situation Summary: COVID-19 U.S. PUIs

COVID-19: U.S. at a Glance*

- Total cases: 938
- Total deaths: 29
- Jurisdictions reporting cases: 39 (38 states and District of Columbia)

* Data include both confirmed and presumptive positive cases of COVID-19 reported to CDC or tested at CDC since January 21, 2020, with the exception of testing results for persons repatriated to the United States from Wuhan, China and Japan. State and local public health departments are now testing and publicly reporting their cases. In the event of a discrepancy between CDC cases and cases reported by state and local public health officials, data reported by states should be considered the most up to date.

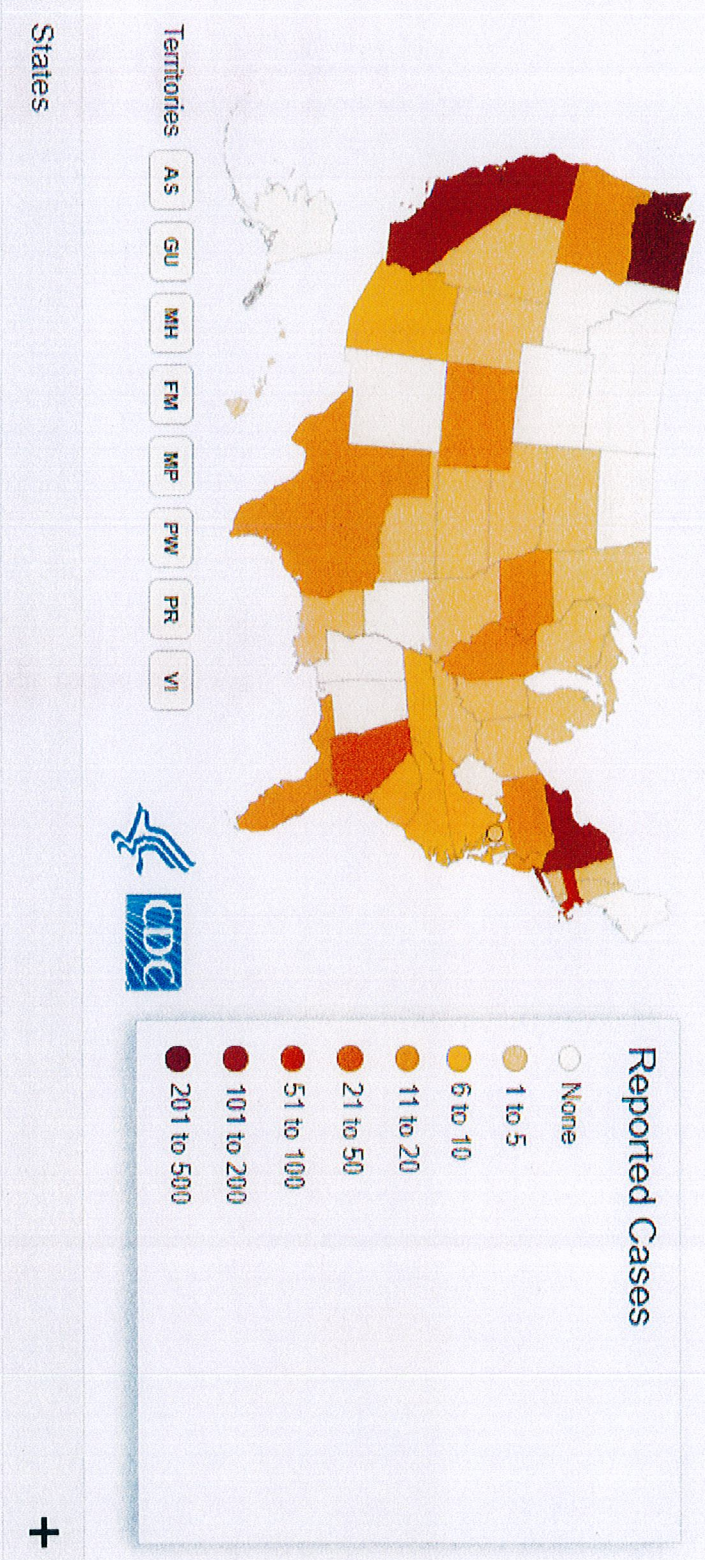
Cases of COVID-19 Reported in the US, by Source of Exposure*†

Travel-related	92
Close contact	75
Under investigation	771
Total cases	938

* Data include both confirmed and presumptive positive cases of COVID-19 reported to CDC or tested at CDC since January 21, 2020, with the exception of testing results for persons repatriated to the United States from Wuhan, China and Japan. State and local public health departments are now testing and publicly reporting their cases. In the event of a discrepancy between CDC cases and cases reported by state and local public health officials, data reported by states should be considered the most up to date.

† CDC is no longer reporting the number of persons under investigation (PUIs) that have been tested, as well as PUIs that have tested negative. Now that states are testing and reporting their own results, CDC's numbers are not representative of all testing being done nationwide.

States Reporting Cases of COVID-19 to CDC*



* Data include both confirmed and presumptive positive cases of COVID-19 reported to CDC or tested at CDC since January 21, 2020, with the exception of testing results for persons repatriated to the United States from Wuhan, China and Japan. State and local public health departments are now testing and publicly reporting their cases. In the event of a discrepancy between CDC cases and cases reported by state and local public health officials, data reported by states should be considered the most up to date.

New York State

Data last updated 4:00pm March 11, 2020

	Positive Cases
Westchester County	121
Nassau County	28
Suffolk County	6
Rockland County	6
Saratoga County	2
Ulster County	1
New York State (Outside of NYC)	164
New York City	52
Total Positive Cases (Statewide)	216

NOTE: Does NOT include positive case identified in Monroe County late Wednesday evening, or other cases confirmed after 4:00 PM.



Erie County
Department of
Health



Public Health
Prevent. Promote. Protect.

Situation Summary: COVID-19

New York State

- Of cases, only small number hospitalized (many in high risk categories)
- NYS Response is focused around cases in New Rochelle (Westchester County)
 - Schools, Houses of Worship and Other Large Gathering Facilities to Be Temporarily Closed for Two-Week Period in Highest Impacted Area of New Rochelle from March 12-25
 - National Guard deployed to State Health Department Command Post in New Rochelle to Assist with Cleaning and Other Community Support Efforts
 - Partnership with Northwell Health to Set Up Satellite Testing Facility in New Rochelle
- General risk remains low in New York State at this time



Erie County
Department of
Health



Public Health
Prevent. Promote. Protect.

Erie County

- Quarantine
 - Total number of individuals quarantined: 192
 - Total completed: 134
 - Individuals currently in quarantine: 58
 - Most individuals have cooperated and are under voluntary quarantine
 - Individuals instructed to alert 911 that they are under ECDOH supervision for quarantine
- Lab testing
 - Total tested (CDC/Wadsworth: 10) (ECPHL: 8) **18**
 - Negative: **18**
 - Total number of laboratory confirmed COVID-19 cases: **0**



Erie County
Department of
Health



Public Health
Prevent. Promote. Protect.

Press Release on Quarantine

ERIE COUNTY DEPARTMENT OF HEALTH UPDATE ON CORONAVIRUS QUARANTINE PROTOCOL

Modified: March 6, 2020 9:28am

Latest News

- 03/06/2020 ERIE COUNTY DEPARTMENT OF HEALTH UPDATE ON CORONAVIRUS QUARANTINE PROTOCOL
PRESS RELEASE From the Office of the Commissioner of Health, Dr. Gale R. Burstein
- 03/05/2020 ERIE COUNTY OPATE EPIDEMIOLOGIC TASK FORCE TO HOLD BLACK BALLOON DAY EVENT ON MARCH 6
PRESS RELEASE From the Office of the Commissioner of Health, Dr. Gale R. Burstein
- 03/04/2020 ERIE COUNTY DEPARTMENT OF HEALTH ALERTS COMMUNITY TO INCREASE IN SUSPECTED OPION OVRDOSE DEATHS
PRESS RELEASE From the Office of the Commissioner of Health, Dr. Gale R. Burstein
- 03/03/2020 ERIE COUNTY DEPARTMENT OF HEALTH SHARES UPDATE ON COVID-19 TESTING
PRESS RELEASE From the Office of the Commissioner of Health, Dr. Gale R. Burstein
- 02/28/2020 LOCAL GROWERS CELEBRATE NATIONAL CSA DAY

03/06/2020

March 5, 2020
CONTACT: Kara Kane
Email: kara.kane@erie.gov
Phone: (716) 858-4941

ERIE COUNTY DEPARTMENT OF HEALTH UPDATE ON CORONAVIRUS QUARANTINE PROTOCOL

*Number of individuals in quarantine countywide to be made public
All personal information, including place of residence and age, will be protected*

ERIE COUNTY, NY - The Erie County Department of Health will make public the number of individuals under quarantine within Erie County based on their potential exposure to coronavirus disease (COVID-19), while taking all precautions to protect the privacy of the affected individuals and their families.

Beginning today, March 6, 2020, ECDOH will make that number public, and will update that data weekly on its web site. No personal information - including age, occupation, school district, and location of residence - related to these individuals will be included in this regular report.

"Protecting the privacy of these individuals while also keeping the public informed is of paramount importance and we are doing everything we can to maintain that. By releasing this aggregate data, we will be able to keep the public up-to-date on the quarantine process while protecting that privacy," said **Commissioner of Health Dr. Gale Burstein**. "This number will change constantly from day to day, so releasing it weekly is most practical means to get this information out. Currently we do not have a confirmed case of COVID-19 in Erie County, but if that changes the public will also be made aware of that."

As of today, 116 individuals are in quarantine in Erie County as part of the coronavirus protocol. These individuals are in every legislative district and are at varying points in the quarantine process, which can vary based on travel history and the updates to guidelines from the Centers for Disease Control and Prevention (CDC). Since the end of January, ECDOH has managed 147 total quarantine cases, and 31 individuals have completed their quarantine period.

Containment Strategies

- Travel restrictions
- Airport entry screening of travelers from China
- Restriction of travel from Europe (as of 3/11/2020)
- Movement restrictions and monitoring of high/medium risk people
- Lab testing of symptomatic individuals at increased risk
- Containment strategies can rapidly identify new cases and limit secondary transmission to persons
 - Limits exposures and suspends transmission chains



Erie County
Department of
Health



Public Health
Prevent. Promote. Protect.

ECDOH Response Activities

- Planning and Preparation
- Mandatory and Precautionary Quarantine
- Community Outreach and Education
- Specimen collection
- Public Health Lab testing capability
- Coordination with county agencies
- Coordination with state and federal partners



Erie County
Department of
Health



Public Health
Prevent. Promote. Protect.

Response strategies

- Shift to maintain dual, simultaneous response strategies:
 - Aggressive, containment, case-based control measures
 - Prepare to implement **non-pharmaceutical interventions**



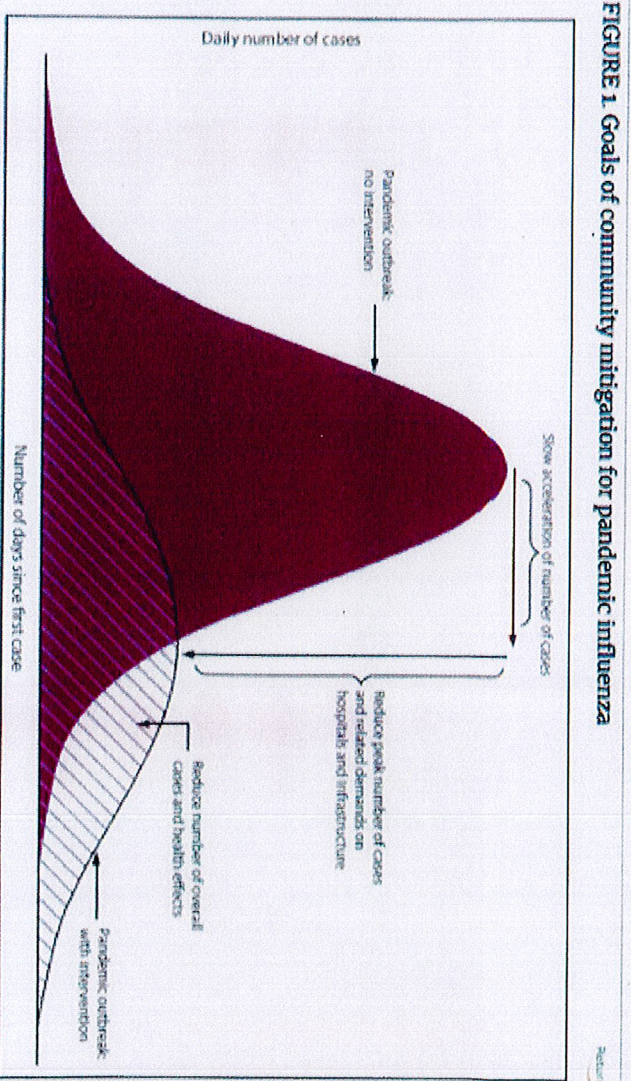
Erie County
Department of
Health



Public Health
Prevent. Promote. Protect.

Non-pharmaceutical interventions

- Delay exponential growth in cases
 - Provide more time for preparation
 - Allow flu season to end
- Decrease height of the peak
 - Eases peak demand on healthcare and public health systems
- Reduce total number of cases



Source: Adapted from: CDC. Interim pre-pandemic planning guidance: community strategy for pandemic influenza mitigation in the United States—early, targeted, layered use of nonpharmaceutical interventions. Atlanta, GA: US Department of Health and Human Services; CDC; 2007. <https://stacks.cdc.gov/view/cdc/11425>.



**Erie County
Department of
Health**



Public Health
Prevent. Promote. Protect.

Non-pharmaceutical interventions

- Goal is to reduce societal impact of pandemic
- Written for pandemic influenza; broadly applicable to other respiratory illnesses
- Help slow spread of respiratory virus infection, including seasonal and pandemic influenza
- Often most readily available interventions to help slow viral transmission in communities
 - especially important before vaccines are available



Erie County
Department of
Health



Public Health
Prevent. Promote. Protect.

Non-pharmaceutical interventions

- Personal NPIs
 - Measures for everyday use
 - Measures reserved for pandemics
- Community NPIs
- Environmental NPIs
 - Environmental Surface Cleaning Measures



Erie County
Department of
Health



Public Health
Prevent. Promote. Protect.

Personal Protective Measures

- **Voluntary home isolation** – Ill individuals stay home from work or school when ill, except to obtain medical care or necessities
- **Respiratory etiquette** – Cover coughs and sneezes; use shirt sleeve if tissue not available – Avoid touching eyes, nose, and mouth
- **Hand hygiene** – Regular and thorough hand washing with soap and water, or alcohol-based hand sanitizers



Erie County
Department of
Health



Public Health
Prevent. Promote. Protect.

Personal Protective Measures Reserved for Pandemics

- Voluntary home quarantine
 - Exposed, non-ill household members stay home for one estimated incubation period
- Use of face masks in the community
 - Worn by ill persons during severe pandemics when in contact with household members and when crowded community setting cannot be avoided
 - Generally not recommended for use by well persons



Erie County
Department of
Health



Public Health
Prevent. Promote. Protect.

Community NPIs - Social Distancing

- ↓ virus transmission by ↓ frequency and duration of social contact among all persons
- ↓ face-to-face contact
- Multiple measures implemented simultaneously
- ↑ distance between people to >6 feet
- Separate sick people ASAP, send home
- Modify, postpone, or cancel mass gatherings



Erie County
Department of
Health



Public Health
Prevent. Promote. Protect.

Environmental NPIS

- Eliminate viruses from frequently touched surfaces and objects
 - Tables, door knobs, toys, desks, keyboards
 - In homes, stores, child care facilities, schools, workplaces, and other places where persons gather
- Clean surfaces with detergent-based cleaners or EPA-registered disinfectants
- Use in seasonal influenza and all pandemic severity scenarios

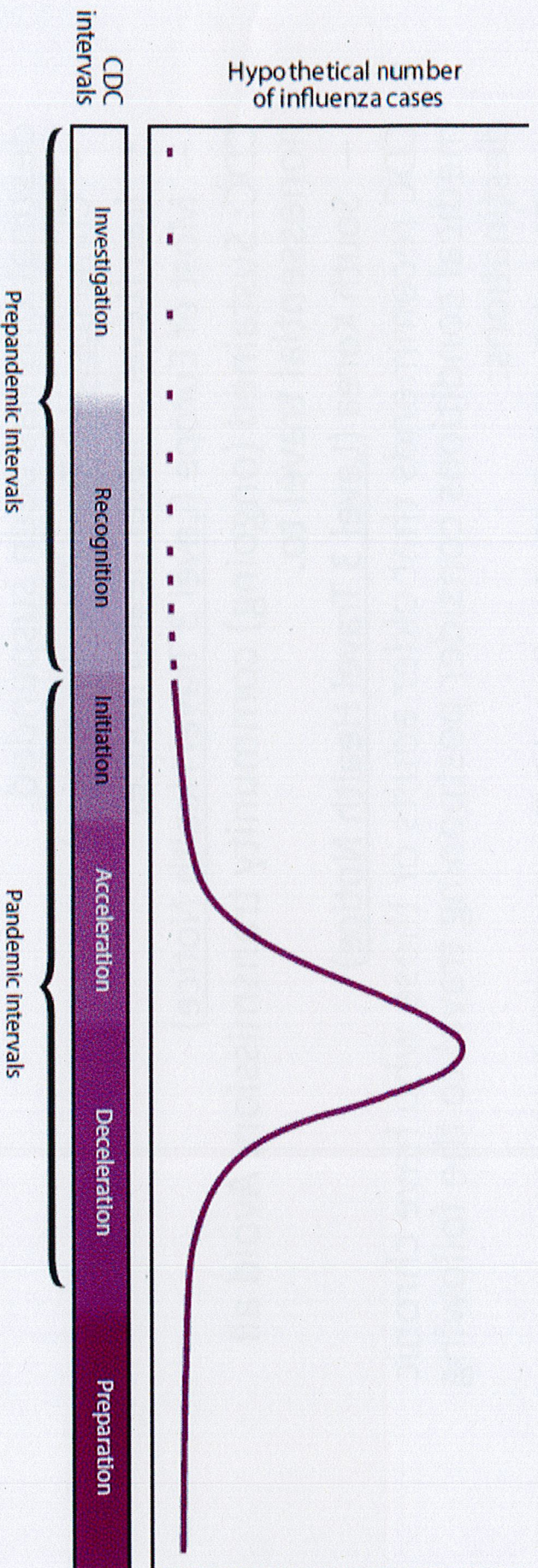


Erie County
Department of
Health



Public Health
Prevent. Promote. Protect.

Timing of community mitigation



Investigation/ Recognition	Initiation	Acceleration	Deceleration	Preparation
NPI planning	Determine when community NPIs will be implemented; use PSAF results to select actions proportional to disease severity	Initiation of appropriate community NPIs	Planning for appropriate suspension of community NPIs	Discontinuing /modifying community NPIs

Current CDC COVID-19 Travel

Restrictions and Recommendations

- CDC recommends that travelers avoid all nonessential travel to the following destinations. Entry of foreign nationals from these destinations has been suspended.
 - China ([Level 3 Travel Health Notice](#))
 - Iran ([Level 3 Travel Health Notice](#))
 - Most of Europe ([Level 3 Travel Health Notice](#))
- CDC: Sustained (ongoing) community transmission. Avoid all nonessential travel to.
 - South Korea ([Level 3 Travel Health Notice](#))
- CDC recommends that older adults or those who have chronic medical conditions consider postponing travel to the following destinations:
 - Global Outbreak Notice ([Level 2 Travel Health Notice](#))
- Regularly check for updates to travel advisories.



Erie County
Department of
Health



Public Health
Prevent. Promote. Protect.

Questions & Answers

- COVID-19 Resources
 - Erie County: www.erie.gov/covid19
 - NYSDOH: <https://www.health.ny.gov/diseases/communicable/coronavirus/>
 - CDC: <http://www.cdc.gov/coronavirus>
 - CDC guidance for businesses:
 - <https://www.cdc.gov/coronavirus/2019-ncov/community/guidance-business-response.html>



Erie County
Department of
Health



Public Health
Prevent. Promote. Protect.