

**Board of
Commissioners Meeting
September 12, 2015**

PRELIMINARY AGENDA

FLORIDA INLAND NAVIGATION DISTRICT Board of Commissioners Meeting

9:00 a.m., Saturday, September 12, 2015

Residence Inn Marriott West Palm Beach Downtown City Place
455 Hibiscus Street
West Palm Beach, FL 33401-5825

Item 1. **Call to Order.**

Chair Blow will call the meeting to order.

Item 2. **Pledge of Allegiance.**

Commissioner Isiminger will lead the Pledge of Allegiance to the United States of America.

Item 3. **Roll Call.**

Secretary McCabe will call the roll.

Item 4. **Consent Agenda.**

The consent agenda items are presented for approval. Commissioners may remove any items from this agenda that they have questions on or would like the Board to discuss in depth. Any items removed would then be included in the regular agenda in an order assigned by the Chair.

(Please see back up pages following the **COLOR** page)

RECOMMEND: Approval of the Consent Agenda.

A) Small-Scale Derelict Vessel Removal Program Request – Indian River County, FL

Item 5. **Additions or Deletions.**

Any additions or deletions to the meeting agenda will be announced.

RECOMMEND: Approval of a final agenda.

Item 6. **Public Comments.**

The public is invited to provide comments on issues that are NOT on today's agenda. All comments regarding a specific agenda item will be considered following Board discussion of that agenda item. *Please note: Individuals who have comments concerning a specific agenda item should fill out a speaker card and communicate with staff prior to that agenda item.*

Item 7. Board Meeting Minutes.

The minutes of the following meetings are presented for approval.

- August 21, 2015 – Finance & Budget Committee Mtg. (Please see back up pages 6-8)
- August 21, 2015 – Board Meeting (Please see back up pages 9-31)

RECOMMEND: Approval of the minutes as presented.

Item 8. Comments from the U.S. Army Corps of Engineers.

U.S. Army Corps of Engineers (USACE) Intracoastal Waterway Project Manager, Ms. Shelley Trulock is scheduled to present an update on projects and activities.

(Please see back up pages 32-35)

Item 9. Staff Report on Palm Beach County Area Projects.

Staff will present a report on the District's Palm Beach County area projects.

(Please see back up pages 36-63)

Item 10. Discussion of Staff Position - Engineer.

At the close of the last Board meeting in July, Commissioner discussion included reference to staff positions and specifically, the consideration of a staff engineer to benefit the District.

The addition of an engineer to the District staff could be beneficial. This position could review all engineering work received by the District, as well as provide additional project management to all projects, and engineering and permit coordination for smaller projects.

District staff is currently comprised of six staff members, the Executive Director, the Assistant Executive Director, the Finance Manager, the Information Manager, the Field Projects Manager and the Office Manager. Our current office was originally designed for two staff members with a meeting space for bi-monthly Board meetings. Without a reduction in current staff, the relocation of the current office, or significant updates/improvements to the current building, it is unlikely that a suitable office could be provided for an additional position.

The salary range for an Engineer is estimated to be between \$60k and \$125k.

(Please see back up pages 64-67)

RECOMMEND: (This item is presented for Board review and discussion only.)

Item 11. Acceptance of the Qualified Low Bid for the Palm Beach Intracoastal Waterway Deepening Project (North), Palm Beach County, FL.

Bids were requested to conduct the deepening of the Intracoastal Waterway (IWW) from the Port of Palm Beach, north. This project will increase the depth of the IWW from the current -10' Mean Low Water (MLW) to -15' MLW. The dredging area is approximately 3,500 feet in length and 101,000 cu/yds of material is expected to be removed from the existing channel.

Two bids were received for this project. The low bidder, Cavache, Inc. has been evaluated and qualified by Taylor Engineering. This contractor has also successfully completed several projects for the District in the past.

(Please see back up pages 68-75)

RECOMMEND: Approval of the qualified low bid from Cavache, Inc., in the amount of \$1,185,822.00 for the Palm Beach Intracoastal Waterway Deepening Project (North), Palm Beach County, FL.

Item 12. Scope of Services and Fee Proposal for Engineering Services for the St. Lucie Reach 1 Maintenance Dredging Project Utility Survey, St. Lucie, County, FL.

In order to finalize the plans and specifications for the forthcoming St. Lucie Reach 1 Dredging Project, it will be necessary to conduct a utility survey of the project area. This area has not been dredged in approximately 40+ years and a survey of this type is instrumental to the success of the project.

Of the proposed fee, approximately 80% is the actual survey work performed by the sub-contractor (Morgan & Ecklund) on this project. Staff has reviewed the submitted information and found it to be consistent and reasonable for this work.

(Please see back up page 76-85)

RECOMMEND: Approval of a proposal and fee quote from Taylor Engineering in the amount of \$49,541.80 for engineering, oversight and implementation of a utility survey for the St. Lucie Reach 1 Maintenance Dredging Project, St. Lucie County, FL.

Item 13. Assistance Projects Extension Requests.

Several Project Sponsors have requested extensions of their FY 2013-14 project agreements. By law and District program rules, these agreements can be extended for one (1) additional year (Revised expiration date: September 30, 2016).

(Please see back up pages 86-98)

RECOMMEND: Approval of the requested project agreement extensions for one additional year.

Item 14. Major Project Cost Estimate Modification – Miami-Dade County Matheson Marina Floating Dock Renovations (Project #DA-14-173), Miami-Dade County, FL.

Miami-Dade County is requesting a major modification to their referenced project. In accordance with Chapter 66B-2.009(3) Waterways Assistance Projects, a project requesting greater than a 35% modification must be reviewed and approved by the District Board.

The requested modification consists of a reduction to two for the number of docks (originally eight) approved in this assistance project for renovation. This reflects the unanticipated costs associated with the project. The overall cost estimate will remain the same.

(Please see back up pages 99-102)

RECOMMEND: Approval of a major project cost modification to Project #DA-14-173, Miami-Dade County Matheson Marina Floating Dock Renovations, Miami-Dade County, FL.

Item 15. Finance and Budget Committee Report.

The District's Finance and Budget Committee met prior to the Board meeting and will provide their recommendations concerning items on the Committee's agenda.

(Please refer to the Finance and Budget Committee Agenda Package)

RECOMMEND: Approval of the recommendations of the District's Finance and Budget Committee.

Item 16. Washington Report.

The District's federal governmental relations firm has submitted a status report concerning activity on the District's federal issues.

(Please see back up pages 103-104)

Item 17. Additional Staff Comments and Additional Agenda Items.

- a) Discussion of Feasibility Study for Office Update.
 - b) Discussion of RFQ for Economic Study Update.
 - c) Discussion of RFP for GIS Services.
-

Item 18. Additional Commissioners Comments.

Item 19. Adjournment.

If a person decides to appeal any decision made by the board, agency, or commission with respect to any matter considered at such meeting or hearing, he or she will need a record of the proceedings, and that, for such purpose, he or she may need to ensure that a verbatim record of the proceedings is made, which record includes the testimony and evidence upon which the appeal is to be based.

**SYNOPSIS OF THE MINUTES OF THE
FLORIDA INLAND NAVIGATION DISTRICT**

Finance and Budget Committee Meeting

8:30 a.m., Friday, August 21, 2015

Disney's Vero Beach Resort

9250 Island Grove Terrace

Vero Beach, Indian River County, Florida 32963-4145

ITEM 1. Call to Order.

Committee Chair Netts called the meeting to order at 8:32 a.m.

ITEM 2. Roll Call.

Assistant Executive Director Janet Zimmerman called the roll and Chair Netts, Vice-Chair Cuozzo, Secretary McCabe, and Commissioner Sansom were present. Ms. Zimmerman stated that a quorum was present.

ITEM 3. Additions or Deletions.

Chair Netts asked if there were any additions or deletions to the meeting agenda. Mr. Crosley stated that there are no additions or deletions to the agenda.

Vice-Chair Cuozzo made a motion to approve the agenda as presented. The motion was seconded by Commissioner Sansom. Chair Netts asked for any further discussion, hearing none, a vote was taken and the motion passed.

ITEM 4. Public Comments.

Chair Netts asked if there were any public comments on issues that are not on today's agenda. There were none.

ITEM 5. Financial Statements for June of 2015.

Mr. Crosley presented the District's financial statements for June of 2015.

Mr. Crosley stated that staff changed the District's tax collections account to Seacoast National and staff is setting up that checking account as an ACH electronic payment account. He stated that the electronic payments will be e-mailed to the appropriate Officer with signatory capabilities for approval. The Seacoast Money Market account receives 0.60% interest. He noted that staff is diligent about shopping for the best interest rates.

Mr. Crosley noted that the State of Florida has closed the State Board of Administration Account (SBA) Fund "B" and those funds were transferred to the SBA Fund "A" account. The BB&T checking account and the SBA Fund "A" account will be closed and moved into the District's Seacoast National checking account.

Mr. Crosley stated that the DMMA FL-3 construction project is 90% complete.

Commissioner Sansom made a motion to approve a recommendation to the full Board of the financial statements for June of 2015. The motion was seconded by Vice-Chair Cuzzo. Chair Netts asked for any additional discussion. Hearing none, a vote was taken and the motion passed.

ITEM 6. June 2015 Budget Summary and Project Status Expenditure Reports.

Mr. Crosley presented the Expenditure and Project Status Reports for June of 2015. He asked for questions, there were none.

ITEM 7. Delegation of Authority Report.

Mr. Crosley presented the Executive Director's Delegation of Authority actions and stated that three (3) actions were taken from July 7 through August 11, 2015 and is presented for committee review. He asked for any questions. There were none.

ITEM 8. Additional Agenda Items or Staff Comments.

Chair Netts asked if there were any additional agenda items or staff comments. There were none.

ITEM 9. Additional Commissioners Comments.

Chair Netts asked if there were any additional Commissioner comments. There were none.

ITEM 10. Adjournment.

Chair Netts stated that hearing no further business the meeting was adjourned at 8:46 a.m.

**SYNOPSIS OF THE MINUTES OF THE
FLORIDA INLAND NAVIGATION DISTRICT**

Board of Commissioners Meeting

9:00 a.m., Friday, August 21, 2015

Disney's Vero Beach Resort

9250 Island Grove Terrace

Vero Beach, Indian River County, Florida 32963-4145

ITEM 1. Call to Order.

Chair Blow called the meeting to order at 9:02 a.m.

ITEM 2. Pledge of Allegiance.

Commissioner Dritenbas led the pledge of allegiance to the Flag of the United States of America.

ITEM 3. Roll Call.

Secretary McCabe called the roll and Chair Blow, Vice-Chair Cuzzo, Treasurer Netts, and Commissioners Chappell, Crowley, Donaldson, Dritenbas, Isiminger, Sansom and Williams were present. Secretary McCabe stated that a quorum was present. There currently is no District Commissioner for Duval County.

ITEM 4. Consent Agenda.

Chair Blow asked if there were any comments or questions regarding the Consent Agenda. There were none.

Commissioner Williams made a motion to approve the Consent Agenda as presented. The motion was seconded by Treasurer Netts. Chair Blow asked for discussion. Hearing none, a vote was taken and the motion passed.

ITEM 5. Additions or Deletions.

Chair Blow asked if there were any additions or deletions to the meeting agenda.

Mr. Crosley stated that he would like to add to the agenda: Item 24A, Additional Utility Location Services for the Broward Intracoastal Waterway Deepening Project, Broward County, Florida.

Commissioner Dritenbas made a motion to approve the final agenda as amended. The motion was seconded by Commissioner Sansom. Chair Blow asked for discussion. Hearing none, a vote was taken and the motion passed.

ITEM 6. Public Comments.

Chair Blow asked if there were any public comments on issues that are not on today's agenda.

Mr. Jerry Scarborough, the Intracoastal Waterway (IWW) Chief of Project Management with the U.S. Army Corps of Engineers (USACE), stated that he will be retiring at the end of 2015. He thanked the Florida Inland Navigation District (FIND) for a great working relationship. Mr. Crosley thanked Mr. Scarborough for all of his work on behalf of FIND.

ITEM 7. Board Meeting Minutes.

Chair Blow asked if there were any comments or questions regarding the June 19, 2015 Finance and Board Meeting Minutes, the June 20, 2015 Board Meeting Minutes, and the July 18, 2015 Board Meeting with Finance Meeting Minutes. There were none.

Treasurer Netts made a motion to approve the above June and July, 2015 Board Meeting and Finance Committee Meeting Minutes, as presented. The motion was

seconded by Commissioner Dritenbas. Chair Blow asked for discussion. Hearing none, a vote was taken and the motion passed.

ITEM 8. Comments from the U.S. Army Corps of Engineers.

Ms. Shelley Trulock, the Intracoastal Waterway (IWW) Project Manager with the U.S. Army Corps of Engineers (USACE), stated that the Plans and Specifications for construction of DMMA O-7 are proceeding and should be completed at the end of November, 2015. The road design and survey are moving forward. She stated that the project is planned for advertisement in March, 2016.

Ms. Trulock stated that the USACE is moving forward with the IWW Broward Reach I project permitting. They hope to utilize the USACE dredge to complete this project. Borings completed last year show that the material is 10% fine and can be placed on the beach. The project will remove approximately 50,000 cubic yards of material from the Federal Channel utilizing off-shore material disposal. FIND will receive a Work Order for this project around February of 2016.

Ms. Trulock stated that Ms. Tori White, with the USACE Regulatory Division, has reviewed the seagrass survey for the IWW Broward Reach I dredging project and found that there is no seagrass within the Federal Channel. It was noted that there are some sparse patches of seagrass within anchor zones, which is workable for project operations. Also, no coral was found within the Federal Channel.

Mr. Crosley stated that he participated in the field visit with the USACE Regulatory Division and the National Marine Fisheries Service (NMFS) to the Broward Reach I project area. Side-Scan Sonar had been previously used to determine the presence or absence of

seagrass and submerged resources. The field work was to verify the sonar's results and assist NMFS with accepting the use of this technology.

Ms. Trulock stated that development of the Plans and Specifications for the IWW St. Augustine and Matanzas Reach of the IWW is ongoing. A hydrographic survey will be performed to verify the amount and location of the shoaling. This project will be completed by the Corps' small business MATOC contracting process. Ms. Trulock will present a dredging Work Order at the March, 2016 FIND Board Meeting.

ITEM 9. Staff Report on Indian River County Area Projects.

Mr. Crosley stated that Phase I of the Dredged Material Management Plan (DMMP) for the Intracoastal Waterway in Indian River County was completed in 1997. Phase II of the DMMP was completed in 2002 and all major land acquisition (three sites) was completed in 2002.

Mr. Crosley stated that the 50-year dredging projection for the 24 miles of channel in Indian River County is approximately 318,324 cubic yards and the storage projection is 607,500 cubic yards.

Mr. Crosley stated that Dredging of Indian River Reach I was completed in 2015. The USACE contractor (Cavache, Inc.) successfully dredged approximately 302,740 cubic yards of material from the Intracoastal Waterway (IWW) channel. Since this area had not been dredged for many years, a significant amount of rocks and miscellaneous material (anchors, crab traps, lines, cables, etc.) was also removed from the waterway. The dredged material was placed in Dredged Material Management Area (DMMA) IR-2. The miscellaneous material was hauled away.

Mr. Crosley stated that three upland sites were purchased for Indian River County Dredged Material Management. The construction of DMMA IR-2 was completed by the USACE with Navigation District funding in 2012. DMMA IR-7 and IR-14 have been cleared.

Mr. Crosley stated that the Indian River County Waterways Economic Study was completed in 2000 and updated in late 2011. The update found that the waterway-related businesses in the county employ 242 people, with salaries of \$10.1 million and a total economic impact of \$44.1 million. Property values were determined to be increased by \$614 to \$724 million by the presence of the IWW channel.

Mr. Crosley stated that notable Waterway Assistance Projects funded include: the Environmental Learning Center; the Vero Beach Municipal Marina and Anchorage; Royal Palm Point Park; Wabasso Causeway Park and Boat Ramps; Jungle Trail Shoreline Stabilization; and the IWW/Sebastian Inlet Connection Channel.

Mr. Crosley stated that the District's Cooperative Assistance Program has provided funding assistance for 32 projects with elements in Indian River County totaling \$1.9 million in District assistance for approximately \$21.1 million in total value of constructed projects.

Mr. Crosley stated that the District's Interlocal Agreement Program has provided funding assistance for five projects with elements in Indian River County.

Mr. Crosley stated that the District has partnered with Keep Indian River Beautiful, Inc. for eleven years and the Marine Industry Association of the Treasure Coast for several years on successful waterway clean-up projects in Indian River County.

Commissioner Dritenbas noted that the Wabasso Bridge is managed and maintained by the Florida Department of Transportation (FDOT) and the fishing platform has been closed for two years and is in need of repair. He questioned if the District could contact the FDOT about partnering to repair this platform.

ITEM 10. Presentation and Discussion of Muck Movement, Discharge Water Quality and Biological Evaluation of Dredging Indian River (IR) Reach 1, Indian River County, Florida.

Mr. Crosley stated that back in October 2014, the Board agreed to cost-share in a study to evaluate muck movements, discharge water quality, and biological impacts on local biota from the Indian River Reach 1 Dredging Project. The preliminary results of the study, conducted in partnership with the U.S. Army Corps of Engineers (USACE) research center in Vicksburg, Mississippi and the Florida Institute of Technology (Florida Tech), Melbourne, FL are now available.

Mr. Crosley noted that due in part to the large size of Dredged Material Management Area (DMMA) IR-2, there was limited outflow from the site, and the dredge slurry, including the dissolved and particulate nutrients, remained inside the DMMA.

Mr. Crosley introduced Dr. Robert Weaver, PhD, Director, with the Indian River Lagoon Research Institute, Assistant Professor of Ocean Engineering - Department of Marine & Environmental Systems, Florida Tech, to present the results from each component of the study and the preliminary analysis.

Dr. Weaver stated that the study was performed during dredging operations and there was not a lot of organic muck within the study area. The area did contain fine sand and clay that did not produce a turbidity plum when fluidized.

Dr. Weaver stated that the DMMA IR-2 retained carrier water that was discharged for three to five days at the beginning of the project. The material release was not controlled after the initial nutrient sampling. The water left DMMA IR-2 via evaporation and percolation. Approximately 276,000 cubic yards of material was removed from the channel and the dredged material was contained within DMMA IR-2.

Dr. Weaver stated that push cores were performed to verify the hydro-survey findings. The majority of the pre-dredged material was soft silt. The push core collection and hydro-survey data matched well. He presented pre and post project and water sampling statistics. The system was efficient at trapping the discharge sediments. Suspended solids and particulate Nitrogen and Phosphorus are greatly decreased during transit from the dredge pipe to the weir. The dredged material water remained in the DMMA because of the large, long, deep design and vegetative growth of DMMA IR-2. This design slowed the material and water flow and gave the particulate matter time to settle down. The suspended solids were trapped in DMMA IR-2. A turbidity plume was not released from DMMA IR-2 and no nutrients were returned to the Indian River Lagoon.

Dr. Weaver stated that there was not a lot of seagrass within the project area. The only seagrass found was where the pipeline entered the water. There were no significant differences in seagrass from the northern control sites, and biological responses in the region adjacent to the DMMA IR-2 cannot be attributed to the dredging operations. The project did not impact the spatial or seasonal variations of the fisheries.

Dr. Weaver questioned if muck migrates in the Indian River Lagoon due to wind and wave events. He answered that further studies need to correlate volumes measured with meteorological events to get a handle on this activity.

Dr. Weaver questioned if the post-dredging sediment movement is indicative of muck migration to the bottom of the IWW channel. He answered that a revisit to the site in six months to perform a high and low frequency survey could answer that question. He also questioned if muck is re-suspended by vessel traffic. He stated that is something that can be studied during the high and low frequency survey. He noted that some water left in DMMA IR-2 was reduced through evaporation and percolation. He noted that only a minor amount of nutrients exited between the joints in the weir boards, and through the designated outfall. The Board briefly discussed the project.

Chair Blow noted that this current contract does not include returning to the project area in six months to determine if the muck has migrated back into the channel. He asked if it would be beneficial for the District to perform a follow-up survey in six months. Dr. Weaver stated that he would recommend that the survey be completed in six months and that is something the USACE could complete. Chair Blow asked if the material would also need to be sampled. Dr. Weaver indicated that the material should be sampled for nutrients.

Mr. Crosley asked Dr. Weaver to provide a six month follow-up proposal to determine if the muck has settled.

Mr. Coraggio Maglio, with the USACE, stated that he would like to ask the Board for permission to publish a peer review publication of this project. Treasurer Netts noted that the project partners should continue with their support of the follow-up. The Board concurred.

ITEM 11. Review of the Proposed 5-Year Dredging and Dredged Material Management Area (DMMA) Plan.

Mr. Crosley stated that staff has updated the District's 5-year plan for dredging and DMMA construction. This document is intended to be a "living" planning document that will be utilized to schedule future District projects. As situations change and opportunities are repositioned, the scheduling of these projects may shift significantly. However, this information provides a basis to plan and finance future waterway improvements.

Mr. Crosley stated that the District's frequent use or critical Dredged Material Management Areas (DMMA) have been constructed, and the District is now working to develop the next level sites where dredging is less frequent. He stated that these project costs are estimates and were based on previously constructed projects. He stated that these capital projects may total approximately \$25 million per year.

Commissioner Isiminger stated that this document is a good planning tool but is not necessarily a budgeting tool. Project costs can fluctuate and are impacted by how much federal funding is provided towards these projects.

Commissioner Crowley asked if staff believes that the plans, specifications, permitting, and dredging for the Baker's Haulover project can be completed in one year. Mr. Crosley stated that the Baker's Haulover project is completed every three years and he noted that each time it become more difficult. He noted that staff will review the area and he noted that the channel may be evaluated for re-routing. Commissioner Crowley stated that the Plans and Specifications should be completed next year. Ms. Trulock stated that the project is scheduled to be worked on after the St. Augustine/Matanzas project has been completed.

Commissioner Sansom asked that a date range be placed on each District DMMA site indicating when it is scheduled to be constructed. Mr. Crosley stated that could be done upon completion of the IWW Centerline Survey.

ITEM 12. Easement Release Request for Fox Cut – Cady Property.

Mr. Crosley stated that the current owners of the waterfront property along Fox Cut (4262 Old A1A) in Flagler County have requested the release of the previous Federal right-of-way associated with this waterbody. The easement is the expired Right-of-Way (ROW) associated with an abandoned route of the Intracoastal Waterway (IWW). Several years ago, this issue was thoroughly vetted, and the Board released all easements that were NOT associated with Section 9, Township 11S, and Range 31E. Because of their proximity to the current IWW ROW, those properties within Section 9 were agreed to be evaluated on a case-by-case basis.

Mr. Crosley stated that staff has determined that the subject property is NOT within the current IWW ROW. The property owner has followed the requested procedures for easement release and submitted the required payments for this process. The property serves no purpose for IWW management and is recommended for release.

Commissioner Sansom made a motion to approve the release of the portion of abandoned Federal IWW ROW at Fox Cut associated with the historic waterway, in accordance with the District's easement release policy and subject to the U.S. Army Corps of Engineers concurrence, Flagler County, Florida. The motion was seconded by Treasurer Netts. Chair Blow asked for discussion. Hearing none, a vote was taken and the motion passed.

ITEM 13. Scope of Services and Fee Proposal for Additional Design of a Permanent Discharge Pipeline for Dredged Material Management Area (DMMA) BV-4B.

Mr. Crosley stated that DMMA BV-4B is the site that saline groundwater contamination was a concern, therefore it was determined that the perimeter ditch should be dug deeper. In order to provide an outflow for the proposed seepage control drainage ditch at DMMA BV-4B, it will be necessary to design, permit and install a permanent pipeline from the facility to the Indian River Lagoon. This pipeline will also handle all discharge water from future dredging events.

Mr. Adams, with Taylor Engineering stated that this project is similar to the DMMA SJ-14 perimeter ditch and pipeline that picks up the seepage from the perimeter ditch and runs it to the IWW. He stated that this project requires going under a highway and railroad tracks with the pipeline. The study will determine if one pipeline or a permanent and temporary pipeline will be necessary.

Mr. Crosley stated that Taylor Engineering has provided a scope of services and a not-to-exceed fee quote for this proposal. Of the proposed work, approximately \$21,000.00 represents work performed by the sub-contractor on this project. Staff has reviewed the submitted information and found it to be consistent and reasonable for this work.

Commissioner Sansom asked if these pipelines have something to keep things from the waterway coming back into the pipe. Mr. Adams stated that the ends of the pipeline are fitted with a grate.

Secretary McCabe made a motion to approve a proposal and fee quote from Taylor Engineering in the amount of \$106,653.00 for design, engineering and permitting of a

permanent discharge pipe for DMMA BV-4B, Brevard County, Florida. The motion was seconded by Treasurer Netts. Chair Blow asked for discussion. Hearing none, a vote was taken and the motion passed.

ITEM 14. Acceptance of the Qualified Low Bid for the Clearing and Grubbing of Dredged Material Management Area MSA-726 (Exchange Club Park), in the City of Pompano Beach, Broward County, Florida.

Ms. Zimmerman stated that staff requested bids to clear and grub the District's Long-Range Dredged Material Management Area (DMMA) MSA-726 (Exchange Club Park) in the City of Pompano Beach. This project is in support of the forthcoming dredging of Reach 1 of the Intracoastal Waterway in north Broward County. Four bids were received for this project: Arbor Tree & Land, Inc, \$607,300.00; Sun Up Enterprises, Inc., \$638,000.00; John Brown and Sons, \$707,000.00; and, Carter's Contracting Services, Inc., \$827,826.00. The low bidder, Arbor Tree & Land, Inc., has been evaluated and qualified by Taylor Engineering.

Treasurer Netts made a motion to approve the qualified low bid from Arbor Tree & Land, Inc., in the amount of \$607,300.00 for the clearing & grubbing of MSA-726 in Broward County, Florida. The motion was seconded by Commissioner Dritenbas. Chair Blow asked for discussion.

Commissioner Sansom asked about MSA-726. Mr. Crosley stated that MSA-726 is the only District site in Broward and Miami-Dade County. It will be used for DMMA management and as a contractor staging area. Mr. Crosley stated that because this is a low frequency dredging Reach, the District is not building a traditional DMMA. This site is currently utilized as a neighborhood park and is surrounded by million dollar homes. The District has performed extensive coordination with the City of Lighthouse Point and the

City Pompano Beach to work with the community to remove the exotic vegetation and plant a landscape buffer leaving the middle area of the site open for the District's use.

Chair Blow noted that the lease for this site with the City of Pompano Beach expires in one year.

Commissioner Sansom stated that if the City of Pompano would like to renew this lease, the District needs to state and identify exactly how the District will use this site in the future.

Chair Blow asked for any further discussion. Hearing none, a vote was taken and the motion passed.

ITEM 15. Scope of Services and Fee Quote for Professional Construction Administration Services for the Clearing, Grubbing and Landscaping of MSA-726 (Exchange Club Park) Broward County, Florida.

Mr. John Adams, with Taylor Engineering stated that the District's clearing and grubbing of MSA-726 within the City of Pompano Beach, will be a five month project requiring construction management and oversight of this project. There will be an arborist on site, one to two hours a day, three days a week to verify that the contractor is doing the work correctly. Taylor Engineering staff will be on site once a week to review this project. This proposal includes bidding support to the landscape phase of this project, and necessary vibration monitoring due to the close proximity of numerous single-family homes in this area. If there are any problems, those problems will be addressed immediately.

Mr. Adams stated that Taylor Engineering has provided a scope of services and a not-to-exceed fee quote for this proposal. Of the proposed work, approximately \$30,560.00 represents work performed by the sub-contractor on this project.

Commissioner Chappell made a motion to approve the scope of services & fee quote from Taylor Engineering in the amount of \$110,664.00 for construction administration, vibration monitoring and landscape bid assistance for MSA-726 (Exchange Club Park) Broward County, Florida. The motion was seconded by Commissioner Dritenbas. Chair Blow asked for discussion. Hearing none, a vote was taken and the motion passed.

ITEM 16. Acceptance of the Contractor Short-List Pursuant to the Request for Qualifications for the Broward County Intracoastal Waterway Deepening Project, Broward County, Florida.

Mr. Crosley stated that the District received five (5) separate responses to the District's Request for Qualifications (RFQ) for the Broward Intracoastal Waterway (IWW) Deepening Project. The bid qualification companies were: Great Lakes Dredge and Dock; Ferreira Construction Southern Division Co., Inc.; Cashman Dredging; Weeks Marine Inc.; and, Orion Marine Group.

Mr. Crosley stated that the Evaluation Committee met on Thursday, August 13, at 11:00 AM to grade, qualify and rank all the respondents who met or exceeded the criteria established in the RFQ in order to select the three (3) highest ranked respondents to be recommended to the Board for bidding. The three (3) highest ranked and recommended contractors to bid on the project are: Cashman Dredging; Orion Marine Group; and Great Lakes Dredge and Dock. If these contractors are approved today, staff will ask them for project bids. The project bids will be presented for approval at the September 12, 2015 Board Meeting.

Commissioner Sansom made a motion to approve the Evaluation Committee's recommended short-list of three (3) contractors to bid on the Broward County Intracoastal

Waterway Deepening Project, Broward County, Florida. The motion was seconded by Commissioner Chappell. Chair Blow asked for discussion.

Commissioner Dritenbas asked if the project bid will be awarded to one contractor. Mr. Crosley answered yes and noted that any of the three contractors should be able to handle this project. Commissioner Dritenbas asked the project duration. Mr. Crosley stated that this is a mechanical dredging project with the material being temporarily placed at Port Everglades. The project duration is anticipated to be two years.

Commissioner Sansom asked about project turbidity. Mr. Crosley stated that he anticipates there will be a perception of turbidity similar to the Dania Cut-Off Canal dredging project, and he noted that the turbidity project analysis showed no adverse effect at the project. The contractors have been advised that project challenges will be the rock, marine traffic, and turbidity.

Chair Blow stated that as the District gets closer to starting this project, perhaps the District should work with the City of Fort Lauderdale and the Marine Industries Association of South Florida (MIASF) in a Public Relations effort that should include what the project will do for the community and that milky water in the IWW is a temporary issue. Commissioner Chappell stated that he has been working with the MIASF and they are very active and involved in this project. The MIASF will assist the District with announcements in the local newspaper, the Marine newspaper and public announcements on the local news channels. The Dania Cut-Off Canal dredging project has been receiving news press regarding the additional marine industry jobs, additional income to the city, and the positive economic impact to the community.

Commissioner Donaldson questioned if it would be valuable to have a Public Relations firm provide a 24-hour hot line, attend progress meetings, and update the project activities for the public.

Commissioner Sansom suggested that the MIASF handle the project Public Relations.

Chair Blow asked for any further discussion. Hearing none, a vote was taken and the motion passed.

ITEM 17. Scope of Work and Fee Quote for Professional Construction Administration, Project Closeout and Certification Services for the Broward Intracoastal Waterway Deepening Project, Broward County, Florida.

Mr. Crosley stated that Taylor Engineering has provided a 2-year (24 month) scope of work and fee quote matching the duration of the proposed Broward Intracoastal Waterway (IWW) Deepening Project construction. Taylor Engineering has been assisting the District with the design, engineering and permitting of this involved and difficult project for many years.

Mr. Crosley stated that it is essential to the success of this project that both the District and the District's engineer provide substantial access and oversight during project construction. Staff has reviewed the submitted cost-plus maximum proposal and found it to be consistent and reasonable for this work.

Commissioner Sansom made a motion to approve the scope of work and fee quote from Taylor Engineering in the amount of \$603,245.00 for a 24-month construction administration, project closeout and certification services for the Broward Intracoastal Waterway Deepening Project, Broward County, Florida. The motion was seconded by

Secretary McCabe. Chair Blow asked for discussion. Hearing none, a vote was taken and the motion passed.

ITEM 18. Assistance Projects Extension Requests.

Ms. Zimmerman stated that 36 Project Sponsors have requested extensions of their FY 2013-14 project agreements. By law and District program rules, these agreements can be extended for one (1) additional year, with a revised expiration date of September 30, 2016.

Commissioner Sansom made a motion to approve the requested project agreement extensions for one additional year. The motion was seconded by Treasurer Netts. Chair Blow asked for discussion. Hearing none, a vote was taken and the motion passed.

ITEM 19. Assistance Program Rule Revision.

Ms. Zimmerman stated that, while working with the Assistance Program and listening to Board discussion over the past year, staff has listed the following potential rule changes for additional consideration by the Board. She stated that the list includes: Public Navigation, Projects or project elements in the category of public navigation that will qualify for up to seventy-five percent (75%) program funds and must be within the Intracoastal Right-of-Way (ROW), or provide public navigation channel access to two or more publicly accessible launching, mooring or docking facilities. **66B-2.005(6)**; Land Acquisition, land acquisition projects that provide for commercial/industrial waterway access shall qualify for a maximum of fifty (50) percent funding. All other land acquisition projects shall qualify for a maximum of twenty-five (25) percent program funding. **66B-2.005(7)**; Ineligible items, Picnic shelters and furniture for non-waterway related facilities. **66B-2.008(1) (b)8**; and, Increase maximum funding for replacement vessels to \$60,000.00.

66B-2.008(1)2. These changes will be made to both the **66B-2** Waterway Assistance Program and the **66B-1** Cooperative Assistance Program rules.

Commissioner Sansom asked about the Rule that limits the amount of funding the District can spend on the Assistance Program. He questioned carrying unused funding forward or allowing another county to use that money.

Attorney Breton referenced the State Statute **374.976 (3)** indicating financial assistance and support shall not exceed the proportional share of ad valorem tax collections from each county. By Rule **66B-2005**, Funds Allocation, the District imposed by Rule 80% funding cap per county

Secretary McCabe made a motion to approve the proposed rule language for rulemaking. The motion was seconded by Commissioner Dritenbas. Chair Blow asked for discussion. Hearing none, a vote was taken and the motion passed.

ITEM 20. Regulatory Plan for Rule Adoption.

Ms. Zimmerman stated that during the past legislative session, the Legislature revised the requirements of the Annual Review of Agency Rules pursuant to Section **120.74, Florida Statutes (F.S.)**. The District has reformatted its Regulatory Plan to meet these new requirements. The changes approved under Item 19 of this agenda must also be included in these changes. In addition to format changes the revised **F.S. 120.74(2)**, requires that by October 1st the District's Regulatory Plan must be posted on the FIND website and must remain active on FIND's website for 10 years after the date of initial publication.

Treasurer Netts made a motion to approve the District's Regulatory Plan for FY 2015-16. The motion was seconded by Secretary McCabe. Chair Blow asked for discussion. Hearing none, a vote was taken and the motion passed.

ITEM 21. Acceptance of the Qualified Low Bid for the Dredged Material Management Area IR-2 Well Monitoring Project, Indian River County, Florida.

Mr. Crosley stated that staff requested bids to provide quarterly well monitoring services for a three-year period at the District's Long-Range Dredged Material Management Area (DMMA) IR-2 located in the City of Sebastian, in north Indian River County. The District received four bids: Environmental Reagent Service, \$12,124.00, the bid was received late; Bonn Environmental Services, \$16,500.00, the bid was received late; Smart-Sciences, Inc., \$16,890.00; and, ARCADIS US, Inc., \$27,000.00.

Mr. Crosley stated that Smart-Sciences, Inc. has submitted a low bid of \$16,890.00 for the proposed work. The contractor has been qualified and staff recommends acceptance of the low bid for this project.

Commissioner Chappell recommended that staff check the references on Smart-Sciences, Inc.

Commissioner Donaldson made a motion to approve the qualified low bid from Smart-Sciences Inc., in the amount of \$16,890.00 for the three-year, quarterly sampling of monitoring wells at DMMA IR-2, Indian River County, Florida. The motion was seconded by Commissioner Dritenbas. Chair Blow asked for discussion. Hearing none, a vote was taken and the motion passed. Commissioner Chappell opposed the motion.

ITEM 22. Finance and Budget Committee Report.

Committee Chair Netts stated that the District's Finance and Budget Committee met before today's Board meeting. He noted that the Committee reviewed and recommends approval of the June, 2015 financial information.

Treasurer Netts made a motion to approve the recommendations of the District's Finance and Budget Committee. The motion was seconded by Commissioner Dritenbas. Chair Blow asked for discussion. Hearing none, a vote was taken and the motion passed.

ITEM 23. Washington Report.

Mr. Crosley stated that at this time of year, there is not a lot of activity in Washington. The House adjourned on July 31st, and the Senate left town on August 6th. Congress will return on September 8, 2015.

Mr. Crosley noted that the President's FY 2016 Budget request includes: \$700,000.00 for the Intracoastal Waterway (IWW); \$33 million for Navigation Maintenance; \$45 million for Inland Waterways, and \$50 million for Small, Remote, or Subsistence Harbors and Channels.

Mr. Crosley referred to the 2014 Water Resources Reform and Development Act (WRRDA) and noted that Representatives Frankel and Rouzer have agreed to send a letter to Secretary Darcy to request that the U.S. Army Corps of Engineers (USACE) carry out the assessment of the Atlantic Intracoastal Waterway and Gulf Intracoastal Waterway identified in the WRRDA. Other Representatives that have agreed to sign on to the Frankel/Rouzer letter include: Mica, Clawson, Jones, Rice and Carter.

ITEM 24A. Additional Utility Location Services for the Broward Intracoastal Waterway Deepening Project, Broward County, Florida.

Mr. Crosley stated that in order to prepare for the forthcoming Broward Intracoastal Waterway (IWW) Deepening Project, Taylor Engineering is recommending that the District contract with Logan Diving & Salvage to use a jet probe to verify the depth of the City of Fort Lauderdale's waterline as it passes under the IWW near the Las Olas Bridge. This 16" CIP waterline was installed in 1956 and numerous discussions and extensive coordination has been conducted with the city on its depth and location.

Commissioner Dritenbas asked who will pay for this waterline to be relocated. Mr. Crosley stated that will be determined once the depth of the waterline is located.

Mr. Adams, with Taylor Engineering stated that this waterline needs to be at least -19 to -20 feet deep because the District's dredging project will be -15 to -17 feet.

Commissioner Dritenbas made a motion to approve the proposal from Logan Diving & Salvage in the amount of \$17,100.00 for additional utility location of the Las Olas Water Main, Broward County IWW Deepening Project, Broward County, Florida. The motion was seconded by Treasurer Netts. Chair Blow asked for discussion. Hearing none, a vote was taken and the motion passed.

ITEM 24. Additional Staff Comments and Additional Agenda Items.

Chair Blow asked if there were any additional agenda items or staff comments.

Mr. Crosley stated that the first FY 2015-2016 Public Tax and Budget Hearing will be held on September 11, 2015 at 5:30 p.m. at the West Palm Beach City Hall, Flagler Gallery, 401 Clematis Street, West Palm Beach, Florida 33401.

Mr. Crosley stated that assistance project permits will be due by 4:00 P.M. on September 23, 2015, which is the date of the District's Final Public Tax Hearing. He asked that commissioners submit their funding allocations several days before that meeting.

ITEM 25. Additional Commissioners Comments.

Chair Blow asked if there were any additional commissioner comments.

Commissioner Donaldson noted that working with the MIAF on the Public Relations for the Broward County Intracoastal Waterway Deepening Project is a great idea.

Commissioner Chappell stated that the District's October 15, 2015 Community Outreach Event will be the Public Relations kickoff for the Broward County Intracoastal Waterway Deepening Project.

Commissioner Chappell suggested meeting with the new U. S. Army Corps of Engineers, Jacksonville District Colonel. He stated that staff can use this meeting to discuss FIND projects.

Mr. Crosley noted that if one or more commissioner goes to a meeting with the Colonel, it must be advertised as a public meeting. He noted that he and Ms. Trulock have discussed inviting the new Colonel to a District Outreach Event and Board Meeting. He also stated that another option would be to meet the new Colonel at the Atlantic Intracoastal Waterway Association (AIWA) conference in November, 2015 which will be held in Jacksonville.

Commissioner Williams asked that the District explore hiring a staff engineer and would like the item placed on the September agenda.

Commissioner Donaldson stated that currently, there is a huge demand for experienced engineers and hiring a staff engineer comes with a high salary.

Commissioner Isiminger suggested that hiring a staff engineer is worth discussion.

Secretary McCabe stated that Volusia County and the city have been working to remove derelict vessels from the waterways.

Treasurer Netts stated that Flagler County has four maritime projects that have been on hold for five or six years due to the National Marine Fisheries Service rejecting the Flagler County Manatee Protection Plan. This relates to the number of boat slips allowed in coastal areas. He stated that a new Flagler County Manatee Protection Plan has been submitted for approval to the Florida Department of Environmental Protection and the Florida Fish and Wildlife Conservation Commission. He stated that Flagler County may ask for a letter of support from FIND on this issue.

ITEM 26. Adjournment.

Chair Blow stated that hearing no further business the meeting was adjourned at 12:12 p.m.



**US Army Corps
of Engineers ®**
Jacksonville District

**IWW STATUS UPDATE
FIND Board of Commissioners Meeting
September 12, 2015**



WORK ACTIVITIES IN FY 15:

1. DMMA O-7 (Martin County)
2. IWW: Broward Reach 1 (Broward County)
3. IWW: St. Augustine and Matanzas (St. Johns County)



**US Army Corps
of Engineers®**
Jacksonville District

**IWW STATUS UPDATE
FIND Board of Commissioners Meeting
September 12, 2015**



AIWW = Atlantic Intracoastal Waterway Norfolk to St. Johns
IWW = Intracoastal Waterway Jacksonville to Miami (12' and 10' projects)
DMMA = Dredge Material Management Area

1. WORK ACTIVITY: DMMA O-7

CONTRACT AMOUNT: TBD

DESCRIPTION OF WORK: Finalization of plans and specifications, environmental coordination, procurement and administration of the construction contract for DMMA O-7.

SCHEDULE O-7:

Complete Draft P&S:	18 Nov 2015
Final P&S Ready to Advertise:	27 Feb 2016
Contract Advertisement Initiated:	16 March 2016
Bid Opening:	17 April 2016
Contract Award:	19 May 2016
NTP Issued:	20 June 2016
Mobilization Complete:	21 July 2016
Construction Complete:	TBD

FIND WORK ORDER: Funding for completion of P&S will be funded with 100% federal funding. A work order will be presented to the FIND Board in January 2016 to fund construction of DMMA O-7.

NAME OF CONTRACTOR: TBD

STATUS: P&S for DMMA O-7 kicked off on 4 Dec 2014 and we are still tracking for a completion of draft plans and specifications by mid November 2015. Corps staff made a second visit to DMMA O-7 in mid-August to identify areas where additional topographic survey data for the access road and channel crossings was needed. The team is currently reworking the design to meet Corps requirements.



**US Army Corps
of Engineers ®**
Jacksonville District

**IWW STATUS UPDATE
FIND Board of Commissioners Meeting
September 12, 2015**



2. WORK ACTIVITY: IWW Broward Reach 1 (Broward County)

CONTRACT AMOUNT: TBD

DESCRIPTION OF WORK: Development of Plans and Specifications for Broward Reach 1. Corps will move forward with initiation of plans and specifications for this reach, with 100% Federal funding in FY 2016. Hydro survey was performed by Morgan and Ecklund and provided to the Corps on 26 June 2014. There is approximately 50k cy of material located within the federal channel down to 10' and 80k cy down to 10'+2'. Given the small quantity, the most cost effective way to pursue the dredging would be utilization of a Corps of Engineers dredge, either the Currituck or Murden, and dispose of in the nearshore.

SCHEDULE: Broward Reach 1 TBD. Currently coordinating with the fdep permit coordinator and nepa coordinator to get a better idea of level of effort.

FIND WORK ORDER: P&S will be funded 100% with Federal funding in 2016. Dredging will likely be funded with FIND Contributed Funds in 2017.

NAME OF CONTRACTOR: TBD, but anticipate dredging will be performed with a Wilmington District dredge.

STATUS: First steps will be FDEP permit and associated NEPA. Team will be proceeding with both NEPA and the permit for a new nearshore disposal area in Broward County since it was verified that the material is less than 20% fines and suitable for placement in the nearshore. Permit and NEPA could take up to a year to obtain.



**US Army Corps
of Engineers** ®
Jacksonville District

**IWW STATUS UPDATE
FIND Board of Commissioners Meeting
September 12, 2015**



3. WORK ACTIVITY: IWW St. Augustine / Matanzas

CONTRACT AMOUNT: TBD

DESCRIPTION OF WORK: Development of Plans and Specifications for St. Augustine and Matanzas reach of the IWW. Plan is to combine these two reaches to save in mobilization cost. Corps will move forward with initiation of plans and specifications for these reaches at the first of FY 16 with 100% Federal funding. The first order of business will be to perform a hydro survey to verify amount and location of shoaling. Anticipate utilizing the Corps small business MATOC contracting tool.

SCHEDULE: (Tentative)

Complete Draft P&S:	8 January 2016
Final P&S Ready to Advertise:	4 April 2016
Contract Advertisement Initiated:	20 April 2016
Bid Opening:	20 May 2016
Contract Award:	20 June 2016
NTP Issued:	20 July 2016
Mobilization Complete:	20 Aug 2016
Construction Complete:	28 Feb 2017

FIND WORK ORDER: P&S will be funded 100% with Federal funding in 2016. Dredging will likely be funded with FIND Contributed Funds mid calendar year 2016. Anticipate a work order for dredging at the March 2016 FIND Board Meeting.

NAME OF CONTRACTOR: TBD

STATUS: Survey will be ordered in October 2015 to identify the shoaling within the two reaches. Permits and NEPA are in place to proceed with dredging and placement on the beach for both locations.



PALM BEACH COUNTY PROJECT STATUS UPDATE

September 2015

Dredged Material Management Plan.

Phase I of the Dredged Material Management Plan (DMMP) for the Intracoastal Waterway in Palm Beach County was completed in 1989. Phase II of the DMMP was completed in 1990 and all major land acquisition was completed in 1991. (Please see the attached maps).

The 50-year dredging projection for the 43 miles of channel in Palm Beach County is 2.9 million cu/yds and the storage projection is approximately 5.5 million cu/yds. The majority of this dredging (76%) is associated with Jupiter Inlet.

Dredged Material Management Area Development and Dredging

Six upland Dredged Material Management Areas (DMMA) have been acquired and two beach placement areas have been secured to manage dredged materials from the Intracoastal Waterway. Peanut Island and MSA 641A DMMA's have been constructed. Easements have been re-secured for beach placement of IWW material on the beach south of Jupiter Inlet (PB-JB).

In 2013, the USACE completed a maintenance dredging project for Cuts P1 through P-4 on the Intracoastal Waterway in the vicinity of Jupiter Inlet. This 30,000 cu/yds project was funded through supplemental Operations & Maintenance funding via Hurricane Sandy relief. This area was previously dredged in 2009 and is regularly dredged about every 3 years. It is scheduled to be dredged again in 2016.

A small but navigation-limiting shoal in the vicinity of the Parker Bridge in Palm Beach Dredging Reach II was removed in September of 2013. The dredged material (approximately 5,000 cu/yds) was placed on MSA 617C and hauled away by the contractor.

The deepening of a portion of Reach III north of the Port of Palm Beach has been bid. The apparent low bidder, Cavache, Inc. has been cleared by our Engineer. The bid is awaiting acceptance at this September 2015 Board meeting. This item is budgeted.

The deepening of the remainder of Reach III south of the Port to the City of West Palm Beach is under consideration. This project is strongly supported by the Marine Industries of Palm Beach County.

Waterways Economic Study

The Palm Beach County Waterways Economic Study was completed in 1998 and updated in 2007 and 2011. The recent study documented up to 831 recreational waterway related businesses in the county employing 5,879 people, with salaries of \$297.5 million and a total economic impact of \$1.26 billion. Property values were determined to be increased by \$2 billion by the presence of the ICW channel. There are approximately 33,128 registered vessels in the county.

FIND



PALM BEACH COUNTY PROJECT STATUS UPDATE

September 2015

Waterways Assistance Program

Since 1986, the District has provided \$44 million in Waterways Assistance Program funding to 180 projects in the County having a total constructed value of approximately \$131 million. The County, fifteen waterfront cities, and the Port of Palm Beach have all participated in the program. (Please see the attached listing).

Notable projects funded include: Peanut Island Park, construction or rehabilitation of most of the area's saltwater boat ramps, South Cove, Riviera Beach Marina, Jupiter Riverwalk, Belle Glade Waterfront, Lake Park Marina, Bryant Park, Delray Intracoastal Park, and the West Palm Beach Waterfront Renovations.

An additional 9 applications are currently being considered for funding assistance for FY 2015-16.

Cooperative Assistance Program

The District's Cooperative Assistance Program has provided funding assistance for the following projects with elements in Palm Beach County: Florida Marine Patrol Officer Funding; Clean Marina Program; Clean Vessel Act; Ocean Avenue bridge replacement; Manatee Acoustic Warning System, and Shoreline Stabilization and Boat lift at the FWC Office. The District's funding assistance for the Palm Beach County portion of these projects was approximately \$2.6 million.

Interlocal Agreement Program

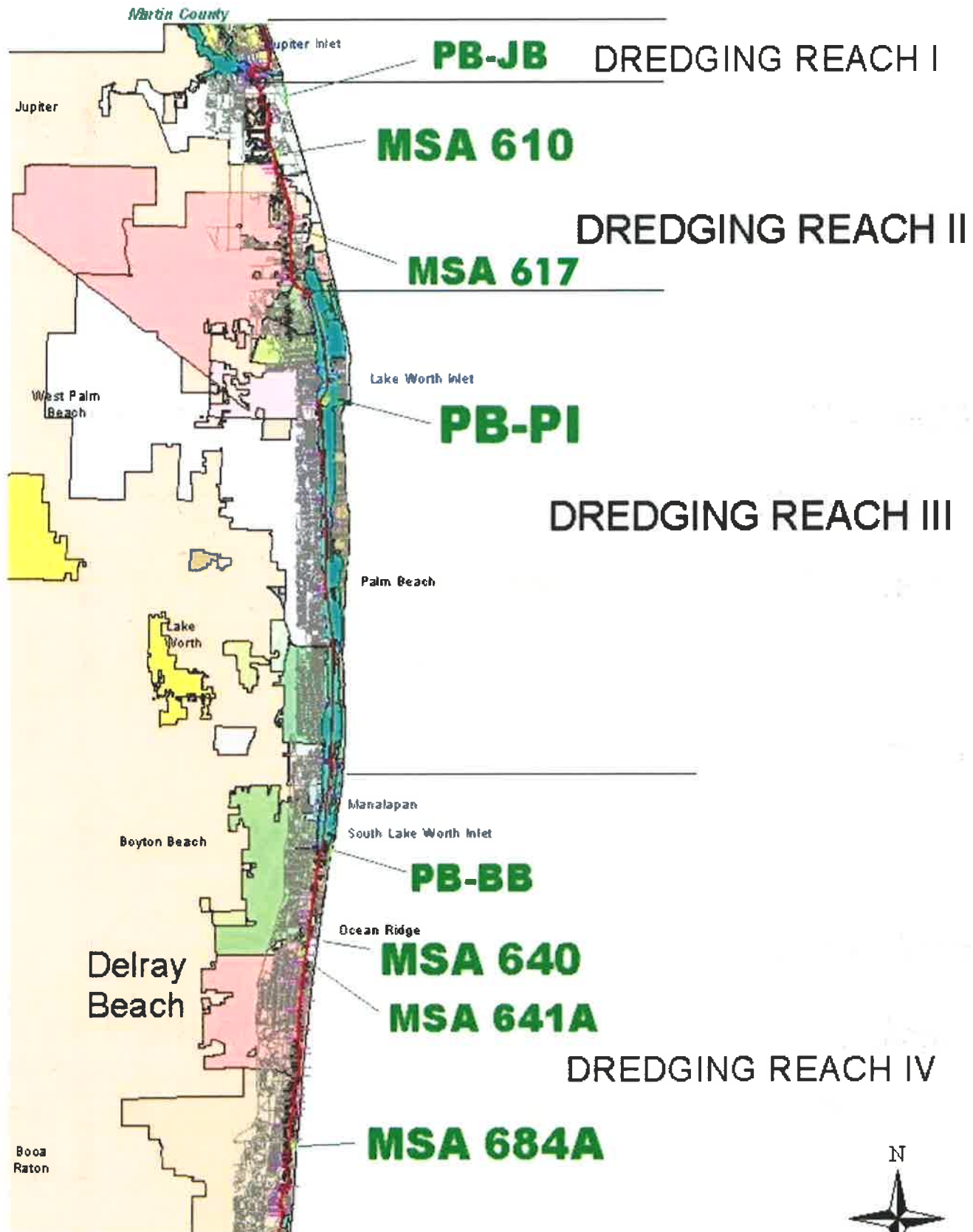
The District's Interlocal Agreement Program (a sub-set of the WAP and CAP programs) has provided funding assistance for the following projects with elements in Palm Beach County: Clean Marina Program; Clean Vessel Act, Dredging of ICW Cut P-50, and the MSA 614B Mitigation/Enhancement Project. The District's funding assistance for the Palm Beach County portion of these projects was approximately \$565,000.

Public Information Program

The District currently prints and distributes the following brochures with specific information about Palm Beach County Waterways: the Economic Impact of Palm Beach County Waterways, Palm Beach County Boating Safety and Manatee Protection Zone Brochure, Movable Bridge Guide, and the ICW Channel Conditions Brochure.

FIND

PALM BEACH COUNTY ICW DREDGING REACHES AND DREDGED MATERIAL MANAGEMENT AREAS





FIND Owned
Channel
ICW Right-of-Way

DMMA PB-JIB

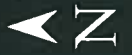


DMMA - PB-JIB

Jupiter Beach placement

Legend

 DMMA PB-JIB



1000 ft

DMMA - PB-JIB
PB-JIB

Ocean Blvd

17A

06

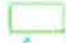


Seminole Ave

Palm Ave

Google earth

Image © 2015 TerraMetrics
Data © NOAA, U.S. Navy, NGA, GEBCO
© 2015 Google



 FIND Owned
 Channel
 ICW Right-of-Way

MSA 610/611





MSA 610

Legend
MSA 610

Google earth

© 2015 Google



FIND Owned
Channel
ICW Right-of-Way

MSA 617C








MSA 617C

Legend
MSAFO-617C

Google earth

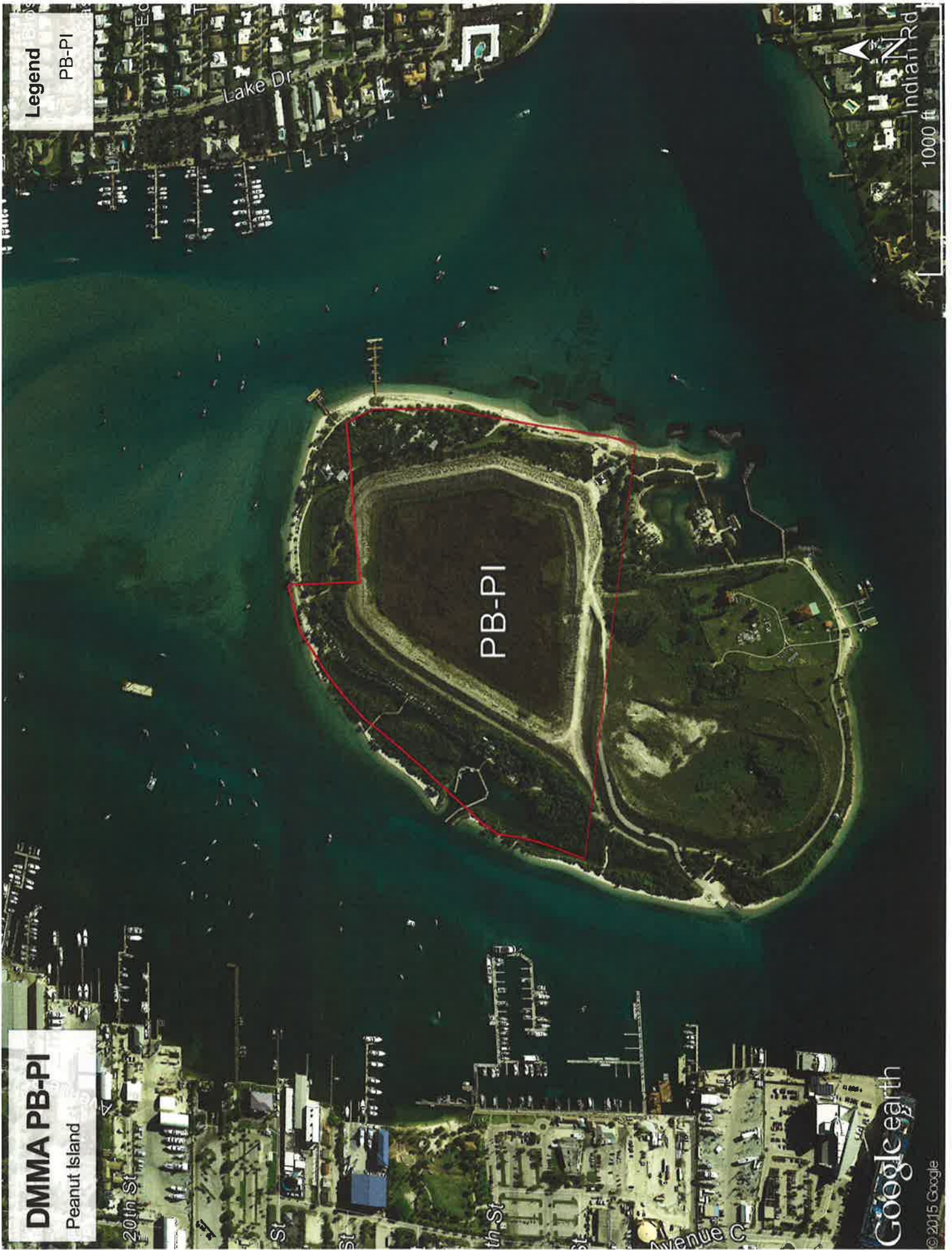
© 2015 Google



 FIND Owned
 Channel
 ICW Right-of-Way

DMMA PB-PI







— FIND Owned
— Channel
— ICW Right-of-Way

DMMA PB-BB





DMMA PB-BB

Boynton Beach placement

Legend

PB-BB

Google earth

Image © 2015 TerraMetrics
© 2015 Google

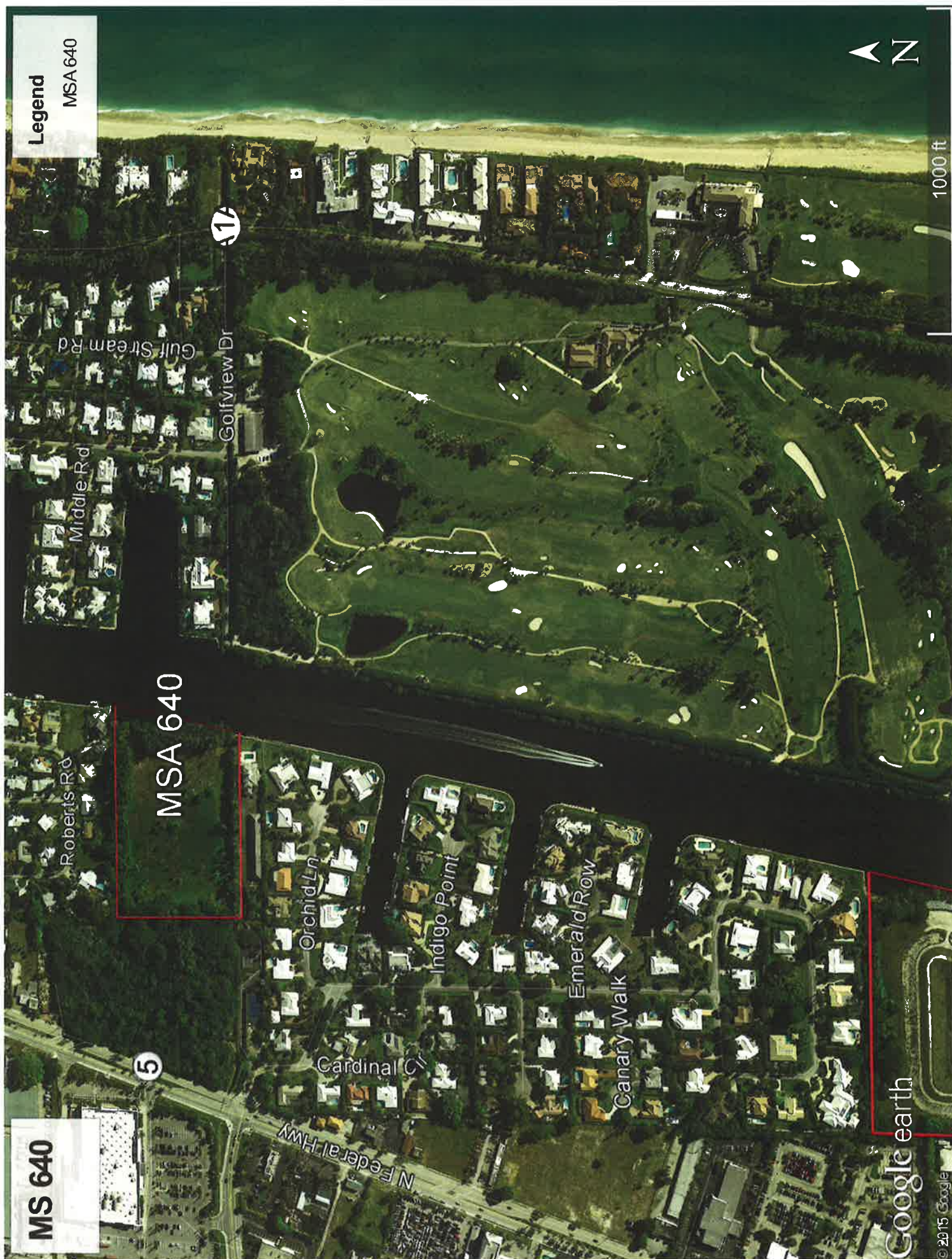
1000 ft

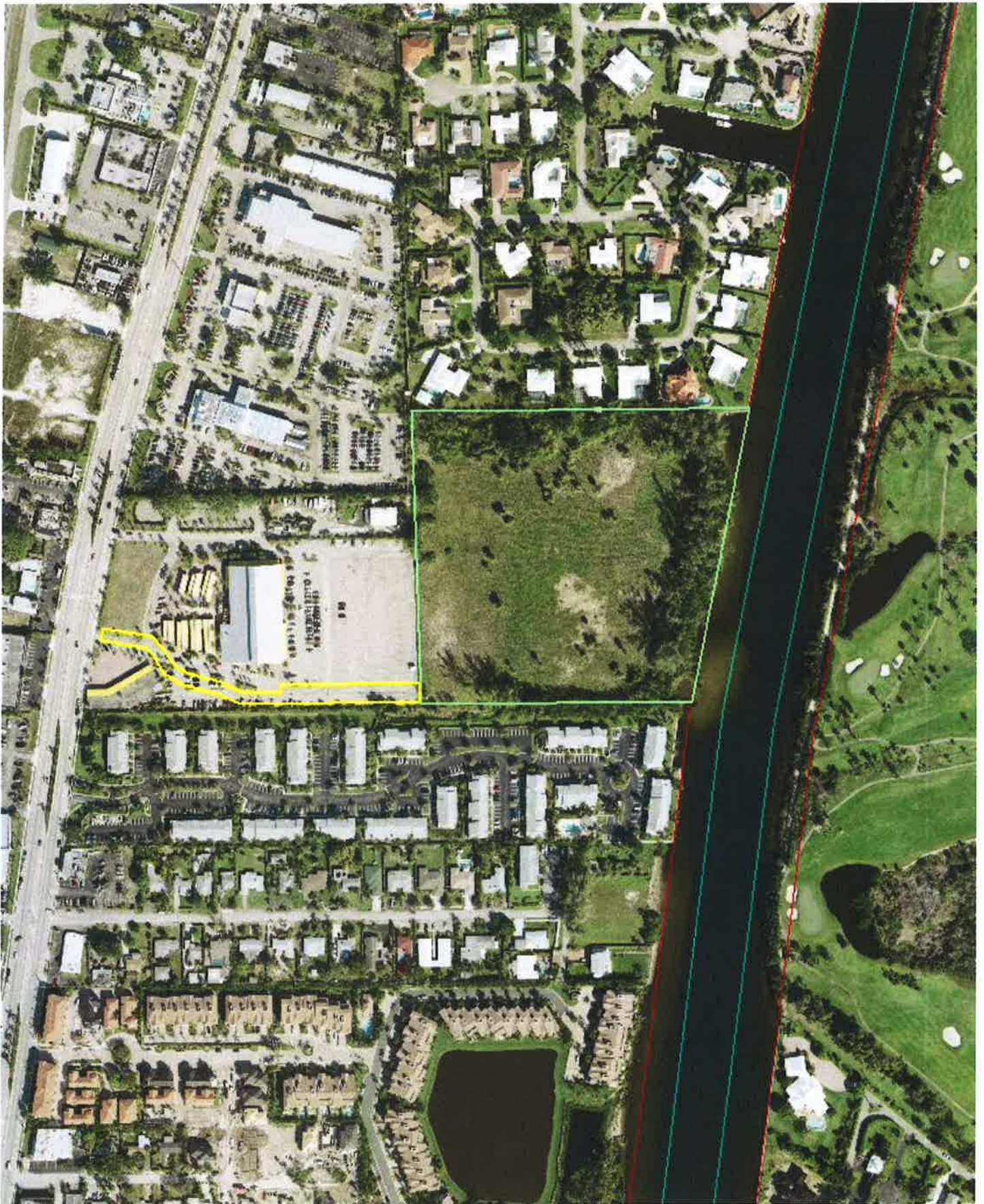


-  Findeas
-  FIND Owned
-  Channel
-  ICW Right-of-Way

MSA 640/640A







-  Findeas
-  FIND Owned
-  Channel
-  ICW Right-of-Way

MSA 641/641A







Findeas
FIND Owned
Channel
ICW Right-of-Way

MSA 684A





MS 684A

Legend

MSA 684A

MSA 684A



900 ft

Google Earth

© 2015 Google

ECONOMIC BENEFITS OF THE DISTRICT'S WATERWAYS



Purpose

To update economic benefits in Palm Beach County of marine-related activities on the District Waterways, as previously estimated in *An Economic Analysis of the District's Waterways in Palm Beach County*, December 2006, and to provide the general public and Federal, State, and local officials with a clear understanding of the importance of maintaining the waterways.

Scenarios Evaluated

1. Current Existing Conditions
2. Cessation of Waterways Maintenance
3. Increase in Waterways Maintenance
4. Estimated impact of the 2007-2009 U.S. economic recession



ECONOMIC IMPACTS

Current Existing Impacts

- \$1.26 billion in business volume
- \$297.5 million in personal income
- 5,879 jobs
- \$53.3 million in tax revenue

Impacts of Cessation of Waterways Maintenance

- Decrease of \$537.3 million in business volume
- Decrease of \$126.3 million in personal income
- Decrease of 2,640 jobs
- Decrease of \$22.2 million in tax revenue

Impacts of an Increase in Waterways Maintenance

- Increase of \$147.4 million in business volume
- Increase of \$33.0 million in personal income
- Increase of 686 jobs
- Increase of \$5.7 million in tax revenue

Impact of the 2007-2009 U.S. Economic Recession

- Decrease of \$779.97 million in business volume
- Decrease of \$182.0 million in personal income
- Decrease of 3,789 jobs
- Decrease of \$31.7 million in tax revenue

Economic Benefits as of April 2011

PALM BEACH COUNTY



ECONOMIC BENEFITS OF THE DISTRICT'S WATERWAYS

PALM BEACH COUNTY

The Intracoastal Waterway

The Atlantic Intracoastal Waterway (AICW) is a 1,391-mile channel between Trenton, New Jersey, and Miami, Florida. The Waterway along Florida's eastern seaboard is 406 miles long and follows coastal rivers and lagoons past numerous tourism-oriented communities. The channel is authorized to a depth of 12 feet from Nassau County to Fort Pierce, and a 10 foot depth south through Miami-Dade County. Boating activities on the waterways contribute to the existence of numerous marine-related businesses such as marinas and boatyards and have stimulated development of residential properties on the Waterways.

The Navigation District

The Florida Inland Navigation District, created in 1927, is the local sponsor for the AICW in Florida. In cooperation with the Jacksonville District of the U.S. Army Corps of Engineers, the Navigation District is responsible for maintenance of the AICW in Florida. To maintain navigation, the waterways need to be periodically dredged due to shoaling from currents, upland soil erosion, and the movement of offshore sands through the ocean inlets. Maintenance dredging is projected to cost approximately \$12 to \$16 million annually during the next 50 years, of which 50 percent of the costs are expected to be borne by property owners within the Navigation District's jurisdiction.

The Navigation District also partners with other governments to provide waterway access and improvement facilities for our mutual constituents. These projects include public boat ramps, marinas, side channels, parks, fishing piers, boardwalks, navigation aids, derelict vessel removal, shoreline stabilization, and waterway cleanups.

Source of Data Used in This Analysis

The economic benefits of the Waterways were estimated in December 2006 in *An Economic Analysis of the District's Waterways in Palm Beach County*.

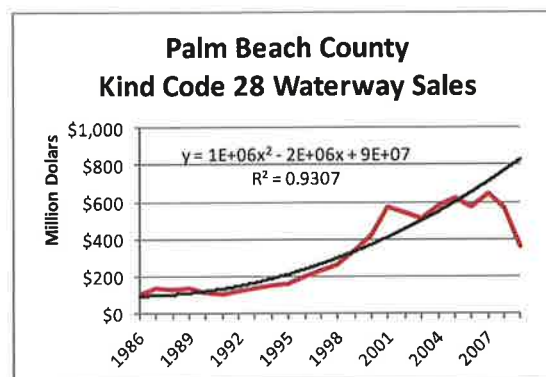
Updating of Previously Estimated Benefits

The benefits presented in this analysis were estimated by updating the direct marine-business

impacts in the original analysis to current values using the change in gross sales reported by boat dealers to the Florida Department of Revenue (FDOR). The updated direct impacts were used in conjunction with an IMPLAN input/output model to estimate total economic benefits.

Estimating the Impact of the Recession

The impact of the recession was estimated by determining the trend in gross sales of boat dealers over the 20-year period prior to the onset of the recession. This trend was used to estimate the theoretical gross sales if sales had continued to increase at the rates previously experienced. The red line in the figure below illustrates reported actual gross sales of boat dealers and the black line illustrates the trend of those sales. From 2007 to 2009 gross boat dealer sales in Palm Beach County decreased by 45 percent; if the recession had not occurred, it is estimated that gross sales from 2007 to 2009 would have decreased by only four percent.

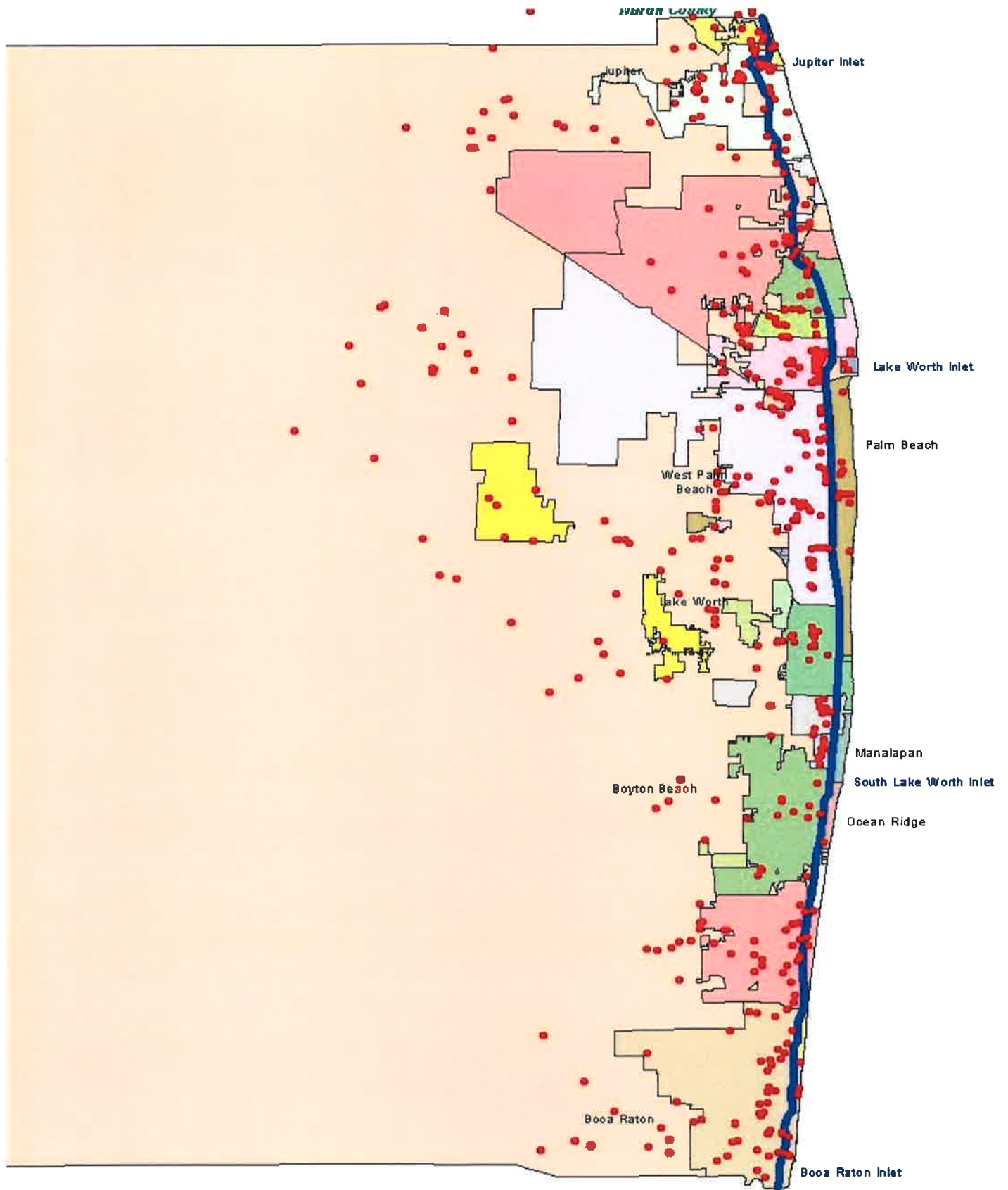


Annual Boater Spending on Gas, Food, and Drinks at Non-Marine-Related Establishments

- Current existing conditions: \$36.4 million
- Cessation of maintenance: \$22.5 million
- Increased maintenance: \$36.4 million
- Assuming no recession: \$48.5 million

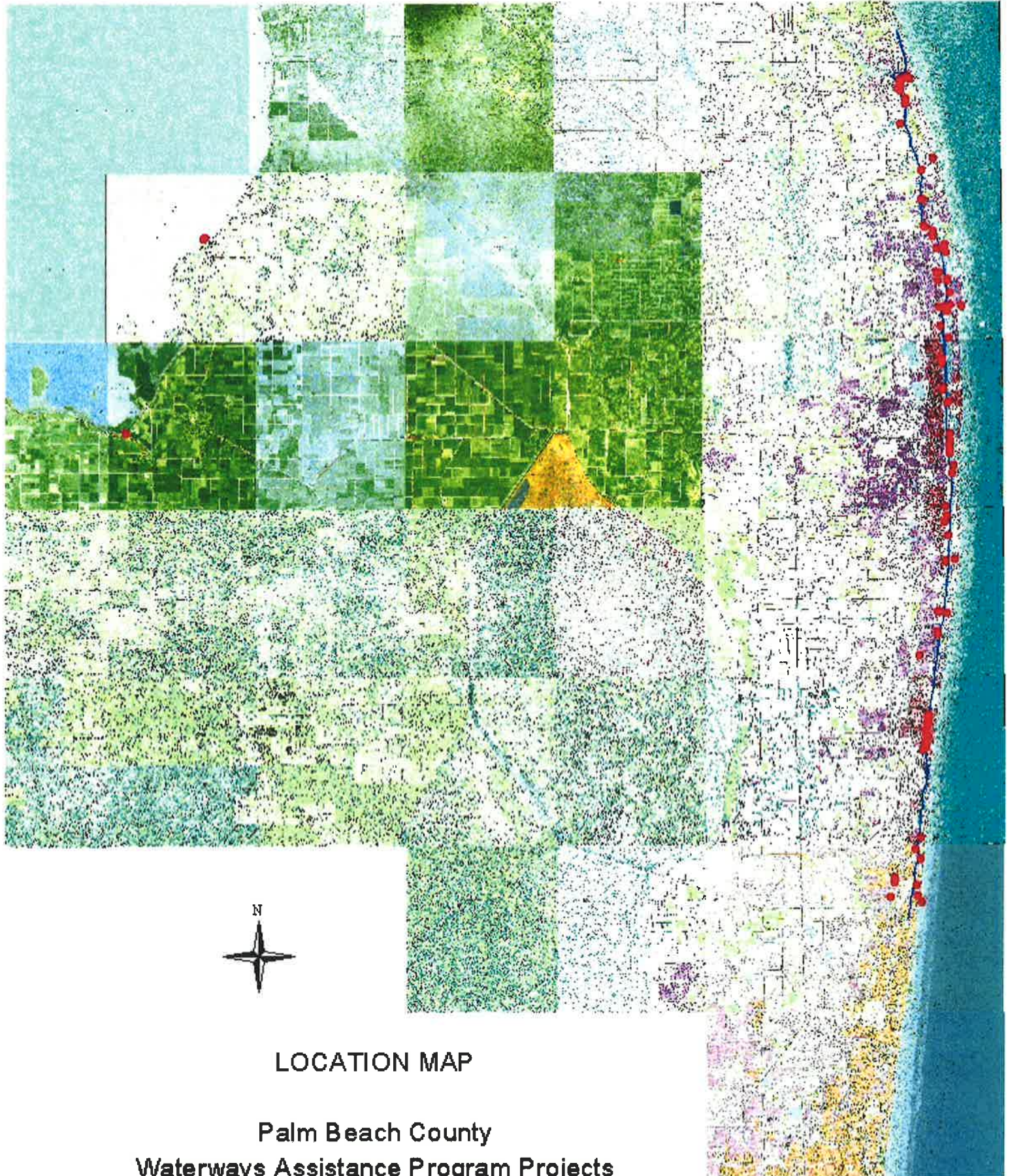
Vessel Draft Restrictions Assumed for Each Scenario

- Current existing conditions: 6.5 feet MLW
- Cessation of maintenance: 3 feet MLW
- Increased maintenance: 10 feet MLW
- Assuming no recession: 6.5 feet MLW



LOCATION MAP

Palm Beach County Waterway Related Businesses



LOCATION MAP

Palm Beach County
Waterways Assistance Program Projects

FLORIDA INLAND NAVIGATION DISTRICT
WATERWAYS ASSISTANCE PROGRAM PROJECTS
IN PALM BEACH COUNTY - 1986-2014

PROJECT NAME	PROJECT NO.	PROJECT SPONSOR	GRANT AMOUNT	TOTAL COST
Boat Ramp Parking Improvement - Belle Glade Marina	PB-BG-92-22	City of Belle Glade	\$32,500.00	\$65,000.00
Belle Glade Marina Seawall Construct.(GRANT CANCELLED)	PB-BG-87-2	City of Belle Glade	\$0.00	
Belle Glade Marina Wharf Repairs (GRANT CANCELLED)	PB-BG-87-1	City of Belle Glade	\$0.00	
Okeechobee Waterway & Inland Marina Channels	PB-BG-08-129	City Of Belle Glade	\$480,500.00	\$961,000.00
North Marina Basin Dock & Boardwalk - Phase II	PB-BG-14-178	City of Belle Glade	\$434,000.00	\$1,130,513.00
Pavilion Lake Ramp & Dredging - Phase I	PB-BG-14-179	City of Belle Glade	\$32,500.00	\$65,000.00
Okeechobee Waterway & Navigation Channels	PB-BG-09-135	City Of Belle Glade	\$328,770.00	\$657,540.00
Restore Boardwalk, Nav. & Dockage, N. Marina Basin-ph I	PB-BG-12-159	City of Belle Glade	\$29,000.00	\$58,000.00
Boating Safety	PB-BR-96-48	City Of Boca Raton	\$32,000.00	\$56,572.75
Boca Raton Fire Rescue Boat	PB-BR-03-104	City Of Boca Raton	\$37,502.00	\$75,004.00
Boca Raton Inlet Dredging Equipment	PB-BR-12-160	City Of Boca Raton	\$109,050.00	\$218,100.00
Boca Raton Inlet Navigation Maintenance Program	PB-BR-00-82	City Of Boca Raton	\$100,000.00	\$200,000.00
Waterways Boating Safety Programs And Equipment	PB-BR-98-66	City Of Boca Raton	\$29,994.00	\$54,994.00
Spanish River Police Dockage Facility	PB-BR-02-96	City Of Boca Raton	\$100,000.00	\$200,000.00
Inlet Navigation & Sand Transfer Project	PB-BR-97-57	City Of Boca Raton	\$42,200.00	\$404,487.00
Hillsboro Canal Maintenance Dredge Project - Phase I	PB-BR-13-176	City Of Boca Raton	\$75,000.00	\$100,000.00
Boca Raton Inlet Dredging Equipment	PB-BR-98-67	City Of Boca Raton	\$240,000.00	\$546,000.00
Lake Wyman Park Development	PB-BR-88-4	City of Boca Raton	\$115,800.00	\$231,600.00
El Rio Canal Dredging	PB-BR-99-77	City Of Boca Raton	\$23,052.00	\$92,200.00
Inflatable Rescue Boat Safety Program	PB-BR-00-83	City Of Boca Raton	\$13,762.00	\$18,350.00
Mangrove Nature Preserve	PB-BB-92-24	City of Boynton Beach	\$15,250.00	\$30,500.00
Boat Club Park Channel Maintenance Dredging	PB-BB-91-14	City of Boynton Beach	\$80,000.00	\$80,000.00
Safe Waterways	PB-BB-98-71	City Of Boynton Beach	\$51,670.00	\$90,231.00
Boat Club Park Navigation Channel Dredging	PB-BB-02-97	City Of Boynton Beach	\$18,000.00	\$40,000.00
Boat Club Park Navigation Channel Dredging	PB-BB-00-84	City Of Boynton Beach	\$22,500.00	\$25,000.00
Boynton Beach Downtown Mangrove Park	PB-BB-94-36	City Of Boynton Beach	\$195,000.00	\$898,234.00
Boat Club Park Fishing/ Viewing Pier	PB-BB-03-105	City Of Boynton Beach	\$22,430.00	\$44,860.00
Jaycee Park Environmental Education	PB-BB-09-136	City Of Boynton Beach	\$77,045.00	\$154,090.00
Delray Intracoastal Park (M.S.A. 650)	PB-DB-06-117	City Of Delray Beach	\$688,420.00	\$1,376,840.00
Delray Beach Marina Improvements	PB-DR-88-3	City of Delray Beach	\$75,000.00	\$150,000.00
Police Boat	PB-DB-00-85	City Of Delray Beach	\$47,229.00	\$62,974.00

FLORIDA INLAND NAVIGATION DISTRICT
WATERWAYS ASSISTANCE PROGRAM PROJECTS
IN PALM BEACH COUNTY - 1986-2014

PROJECT NAME	PROJECT NO.	PROJECT SPONSOR	GRANT AMOUNT	TOTAL COST
Land Acquisition - Boat Ramp Parking	PB-DB-00-86	City Of Delray Beach	\$70,000.00	\$140,000.00
Mangrove Park Boat Ramp Reconstruction	PB-DB-10-144	City Of Delray Beach	\$85,740.00	\$175,000.00
Municipal Marina	PB-DB-00-87	City Of Delray Beach	\$81,000.00	\$402,000.00
Knowles Park Boat Ramp	PB-DB-97-58	City Of Delray Beach	\$77,261.00	\$154,522.00
Seawall Rehabilitation Project	PB-DB-94-35	City Of Delray Beach	\$164,950.00	\$408,900.00
Veterans Park - Phase I	PB-DB-90-9	City of Delray Beach	\$157,500.00	\$315,032.00
Seawall Parks	PB-DB-02-98	City Of Delray Beach	\$20,000.00	\$40,000.00
Bryant Park Boat Ramp Imp. & Bulkhead Repairs - Phase I	PB-LW-95-39	City Of Lake Worth	\$13,000.00	\$26,000.00
Bryant Park Seawall Restoration - Phase A	PB-LW-07-125	City Of Lake Worth	\$802,007.00	\$1,604,014.00
Bryant Park Boat Ramp Improvements - Phase I I	PB-LW-96-42	City Of Lake Worth	\$180,000.00	\$360,000.00
Pahokee Marina/ Channel Dredging	PB-PA-04-112ER	City Of Pahokee	\$250,000.00	\$350,000.00
Pahokee Marina and Park	PB-PA-91-16	City of Pahokee	\$80,000.00	\$195,000.00
Shoreline Stabilization & Marina Dredging	PB-PA-06-120	City Of Pahokee	\$425,000.00	\$975,325.00
Pahokee Marina Improvements	PB-PA-98-65	City Of Pahokee	\$98,950.00	\$197,900.00
Marina & Access Channel Dredging	PB-PA-02-100	City Of Pahokee	\$250,000.00	\$500,000.00
Pahokee Marina Improvements	PB-PA-96-46	City Of Pahokee	\$30,000.00	\$60,000.00
Marine Reconstruction	PB-PA-05-113	City Of Pahokee	\$500,000.00	\$2,707,000.00
Bicentennial Park Improvements - Phase I	PB-RB-12-165	City Of Riviera Beach	\$50,000.00	\$100,000.00
Riviera Beach Municipal Marina Dredging	PB-RB-98-68	City Of Riviera Beach	\$136,200.00	\$152,000.00
Riviera Beach Marina Construction - Part B, Phase I	PB-RB-14-185	City of Riviera Beach	\$75,000.00	\$150,000.00
Palm Beach Maritime Museum Env. Education (Expired)	PB-RB-91-17	City of Riviera Beach	\$45,000.00	\$45,000.00
Municipal Marina Construction - Phase B	PB-RB-12-166	City Of Riviera Beach	\$1,000,000.00	\$3,399,000.00
Municipal Marina Construction	PB-RB-11-158	City Of Riviera Beach	\$1,500,000.00	\$3,000,000.00
Municipal Marina Construction	PB-RB-10-150	City Of Riviera Beach	\$850,000.00	\$4,270,366.00
Palm Beach Seaport Aquarium - Phase I (Cancelled)	PB-RB-96-49	City Of Riviera Beach	\$40,000.00	\$140,000.00
Municipal Marina Construction - Phase B1	PB-RB-13-177	City Of Riviera Beach	\$750,000.00	\$4,341,396.00
Municipal Marina Remediation - Phase I	PB-RB-09-141	City Of Riviera Beach	\$475,000.00	\$950,000.00
Bicentennial Park Boardwalk & Fishing Pier (Expired)	PB-RB-99-78	City Of Riviera Beach	\$41,945.00	\$83,890.00
S.V. Florida, The Ship For Kids (Project Expired)	PB-RB-96-50	City Of Riviera Beach&living Classroom	\$194,700.00	\$491,600.00
I.C.W. Tributary Channel Improvements - Ph I (Expired)	PB-SB-98-72	City Of South Bay	\$15,000.00	\$27,000.00
Boat Ramp Park Expansion - Phase I (Expired)	PB-SB-02-103	City Of South Bay	\$76,000.00	\$152,000.00
Downtown Waterfront Park (Project Expired)	PB-WPB-95-40	City Of West Palm Beach	\$37,500.00	\$75,000.00

FLORIDA INLAND NAVIGATION DISTRICT
WATERWAYS ASSISTANCE PROGRAM PROJECTS
IN PALM BEACH COUNTY - 1986-2014

PROJECT NAME	PROJECT NO.	PROJECT SPONSOR	GRANT AMOUNT	TOTAL COST
Currie Park - Phase I I	PB-WPB-90-10	City of West Palm Beach	\$100,000.00	\$230,000.00
West Palm Beach Waterfront Park - Phase I I I	PB-WPB-06-122	City Of West Palm Beach	\$1,000,000.00	\$3,000,000.00
Renovation Of Fishing Pier @ 54th Street Park	PB-WPB-93-30	City Of West Palm Beach	\$36,475.00	\$72,950.00
Currie Park Boat Launching & Bulkhead Improvements	PB-WPB-00-92	City Of West Palm Beach	\$125,000.00	\$255,000.00
P.B. Maritime Museum Dock Extension & Building	PB-WPB-98-69	City Of West Palm Beach	\$137,550.00	\$183,400.00
Docks For Environmental Education Project	PB-WPB-97-61	City Of West Palm Beach	\$135,882.00	\$150,980.00
Currie Park Boat Access Improvement - Phase I	PB-WPB-12-167	City Of West Palm Beach	\$25,000.00	\$50,000.00
Currie Park Boating Improvement	PB-WPB-09-143	City Of West Palm Beach	\$233,800.00	\$467,600.00
Currie Park Fishing Piers Improvement Project	PB-WPB-12-168	City Of West Palm Beach	\$394,000.00	\$788,000.00
City Commons & Waterfront Park - Phase V	PB-WPB-08-134	City Of West Palm Beach	\$1,000,000.00	\$2,000,000.00
City Commons & Waterfront Project - Phase V-2	PB-WPB-09-142	City Of West Palm Beach	\$150,000.00	\$300,000.00
Waterfront Park - Phase I I	PB-WPB-05-116	City Of West Palm Beach	\$1,000,000.00	\$3,500,000.00
City Commons Kayak/ Paddle Boat Launch - Phase I	PB-WPB-10-151	City Of West Palm Beach	\$30,000.00	\$60,000.00
Currie Park Improvements - Phase I	PB-WPB-89-6	City of West Palm Beach	\$91,750.00	\$400,000.00
West Palm Beach Waterfront Park - Phase I	PB-WPB-04-111	City Of West Palm Beach	\$250,000.00	\$750,000.00
West Palm Beach Waterfront Park - Phase I V	PB-WPB-07-128	City Of West Palm Beach	\$1,000,000.00	\$3,000,000.00
Safe Waterways	PB-JU-96-43	Jupiter Police Department	\$35,598.00	\$60,858.00
Burt Reynolds Park Boat Ramp & Parking	PB-93-28	Palm Beach Board Of Commissioners	\$116,500.00	\$400,000.00
Inshore Artificial Reef Project	PB-95-37	Palm Beach County	\$73,687.00	\$147,374.00
Waterway Park Development	PB-13-173	Palm Beach County	\$1,420,396.00	\$2,840,792.00
Waterway Park Design & Permitting - Phase I (Expired)	PB-10-149	Palm Beach County	\$100,000.00	\$428,711.00
Bert Winters Boat Ramp	PB-89-5	Palm Beach County	\$71,500.00	\$143,000.00
Bert Winters Boat Ramp - Phase I	PB-11-152	Palm Beach County	\$90,000.00	\$180,000.00
Bert Winters Park Acquisition	PB-13-169	Palm Beach County	\$250,000.00	\$1,000,000.00
Du Bois Park - Phase I	PB-05-114	Palm Beach County	\$61,854.00	\$250,000.00
Habitat Enhancement Along Lake Worth Golf Course	PB-98-63	Palm Beach County	\$15,000.00	\$30,000.00
Jupiter Ridge Shoreline Restoration Project	PB-10-147	Palm Beach County	\$500,000.00	\$1,479,718.00
Lake Worth Wetlands Restoration Project	PB-02-101	Palm Beach County	\$400,000.00	\$13,968,377.00
Snook Islands Public Use Facilities	PB-08-133	Palm Beach County	\$639,575.00	\$1,279,150.00
Juno Park Improvements	PB-90-8	Palm Beach County	\$12,500.00	\$25,000.00
Fullerton Island Restoration Project	PB-12-163	Palm Beach County	\$794,030.00	\$2,532,710.00
Peanut Island Erosion Control & Reef Project	PB-14-184	Palm Beach County	\$166,800.00	\$333,600.00

FLORIDA INLAND NAVIGATION DISTRICT
WATERWAYS ASSISTANCE PROGRAM PROJECTS
IN PALM BEACH COUNTY - 1986-2014

PROJECT NAME	PROJECT NO.	PROJECT SPONSOR	GRANT AMOUNT	TOTAL COST
South Cove Restoration And Boardwalk	PB-10-148	Palm Beach County	\$1,000,000.00	\$4,388,000.00
Old Bridge Park Natural Area	PB-14-182	Palm Beach County	\$251,875.00	\$503,750.00
John's Island Oyster Reef Project	PB-08-132	Palm Beach County	\$200,000.00	\$680,000.00
Light Harbor Marina Construction (Project Expired)	PB-98-62	Palm Beach County	\$500,000.00	\$2,100,000.00
Light Harbor Marina - Phase I (Project Expired)	PB-97-51	Palm Beach County	\$80,000.00	\$164,552.00
Highland Beach Mangroves Shoreline Restoration	PB-13-170	Palm Beach County	\$258,037.00	\$516,075.00
Burt Reynolds Park West Side Redevelopment	PB-14-180	Palm Beach County	\$750,000.00	\$1,500,000.00
Waterway Park Development - Phase IIB	PB-14-181	Palm Beach County	\$1,254,604.00	\$2,509,208.00
Inshore Artificial Reef Project	PB-99-75	Palm Beach County	\$30,000.00	\$60,000.00
Lake Wyman Restoration Project (Expired)	PB-11-155	Palm Beach County	\$372,868.00	\$745,736.00
Juno Dunes Shoreline Restoration	PB-13-171	Palm Beach County	\$280,725.00	\$561,450.00
Light Harbor Boat Ramp (F.K.A. Moroso Wtwy Park)	PB-07-126	Palm Beach County	\$987,000.00	\$2,476,321.00
Dubois Park Marina & Shoreline Stabilization	PB-09-140	Palm Beach County	\$987,000.00	\$2,587,975.00
Torry Island Reef Project	PB-14-183	Palm Beach County	\$118,150.00	\$236,300.00
Juno Beach Boat Ramp Improvement	PB-92-18	Palm Beach County	\$60,354.00	\$120,708.00
Dubois Park Marina Shoreline Stabilization - Phase I	PB-93-29	Palm Beach County	\$96,687.00	\$222,380.00
Dubois Park Restoration - Phase I	PB-90-7	Palm Beach County	\$15,000.00	\$30,000.00
John's Island Oyster Reef Project - Phase B	PB-11-154	Palm Beach County	\$406,250.00	\$812,500.00
Ship For Kids	PB-01-95	Palm Beach County	\$75,000.00	\$150,000.00
Burt Reynolds Park Boat Ramp Design	PB-92-19	Palm Beach County	\$15,000.00	\$30,000.00
Phil Foster Park Development - Phase I I I	PB-03-108	Palm Beach County	\$720,000.00	\$1,440,000.00
Burt Reynolds Park - Phase I I	PB-06-121	Palm Beach County	\$806,750.00	\$2,413,500.00
Phil Foster Park - Phase I	PB-01-94	Palm Beach County	\$100,000.00	\$200,000.00
Munyon Island Restoration - Phase I	PB-91-13	Palm Beach County	\$100,000.00	\$202,000.00
Bryant Park Wetland Restoration & Boat Ramp Facility	PB-11-153	Palm Beach County	\$255,000.00	\$625,000.00
Munyon Island Restoration - Phase I I	PB-92-20	Palm Beach County	\$211,000.00	\$442,000.00
Ocean Inlet Design And Permitting	PB-13-172	Palm Beach County	\$75,000.00	\$150,000.00
Peanut Island Development - Phase 3	PB-99-76	Palm Beach County	\$97,500.00	\$195,000.00
Burt Reynolds Park - West Side Design - Phase I	PB-12-162	Palm Beach County	\$50,000.00	\$100,000.00
Ocean Inlet Marina Channel Dredging & Daymarking	PB-91-12	Palm Beach County	\$60,000.00	\$66,975.00
Peanut Island Development - Phase I V	PB-00-90	Palm Beach County	\$525,000.00	\$6,344,431.00
S. Lake Worth Inlet Sand Trap & Boat Channel Dredging	PB-07-127	Palm Beach County	\$233,220.00	\$897,000.00

FLORIDA INLAND NAVIGATION DISTRICT
WATERWAYS ASSISTANCE PROGRAM PROJECTS
IN PALM BEACH COUNTY - 1986-2014

PROJECT NAME	PROJECT NO.	PROJECT SPONSOR	GRANT AMOUNT	TOTAL COST
Exotic Vegetation Removal & Env. Restoration	PB-99-74	Palm Beach County	\$5,250.00	\$10,500.00
Preconstruction Work Munyon Island Boat Dock (Expired)	PB-98-64	Palm Beach County	\$10,000.00	\$20,000.00
Burt Reynolds Park Staging Dock Extension	PB-10-146	Palm Beach County	\$75,000.00	\$150,000.00
Lake Worth Lagoon Artificial Reef At Kelsey Park	PB-03-107	Palm Beach County	\$100,000.00	\$200,000.00
Peanut Island Park - Phase 1 B & 2 A	PB-96-44	Palm Beach County	\$399,050.00	\$798,100.00
Burt Reynolds Park Development - Phase A	PB-04-110	Palm Beach County	\$400,000.00	\$1,000,000.00
C.D. R.O.M. & Web Site For Lake Worth Lagoon	PB-97-54	Palm Beach County	\$70,000.00	\$92,000.00
Peanut Island Development - Phase I	PB-95-38	Palm Beach County	\$456,216.00	\$912,433.00
Munyon Island Wetland Restoration - Phase I I	PB-94-34	Palm Beach County Board Commission	\$223,500.00	\$1,170,083.00
Burt Reynolds Park Boat Ramp Construction & Improvement	PB-94-33	Palm Beach County Board Commission	\$135,234.00	\$270,468.00
Surveys For Munyon Island Restoration	PB-93-26	Palm Beach County Board Of Comm.	\$21,704.00	\$43,408.00
Inshore Artificial Reef	PB-97-53	Palm Beach County Board Of Comm.	\$50,000.00	\$107,134.00
Red Reef Park Estuarine Enhancement	PB-96-45	Palm Beach County D.E.R.M.	\$57,270.00	\$114,540.00
Waterway Safety, Education & Enforcement	PB-97-52	Palm Beach County Sheriff's Office	\$52,000.00	\$61,400.00
Docks For Environmental Education Project	PB-PPB-97-59	Port Of Palm Beach	\$69,521.00	\$77,246.00
Palm Beach Maritime Museum Environmental Educ. Program	PB-PPB-93-27	Port Of Palm Beach	\$60,000.00	\$60,000.00
Environmental Boating Education Program	PB-JB-91-15	Town of Juno Beach	\$19,000.00	\$19,000.00
Jupiter Riverwalk & Public Docks at Marina (Withdrawn)	PB-JU-12-161	Town Of Jupiter	\$780,939.00	\$1,621,466.00
Inlet Village Marina	PB-JU-07-123	Town Of Jupiter	\$200,000.00	\$400,000.00
Jupiter Riverwalk	PB-JU-02-99	Town Of Jupiter	\$500,000.00	\$1,002,589.00
Riverwalk - Phase I I	PB-JU-00-88	Town Of Jupiter	\$500,000.00	\$1,000,000.00
Bridge Park Plaza	PB-JU-03-106	Town Of Jupiter	\$246,250.00	\$492,500.00
Water Safety Program	PB-JU-00-89	Town Of Jupiter	\$13,445.00	\$17,926.00
Riverwalk At Harbourside - Phase B	PB-JU-10-145	Town Of Jupiter	\$700,000.00	\$1,400,000.00
Make Our Waterways Safe (Withdrawn)	PB-JU-06-118	Town Of Jupiter	\$30,000.00	\$95,000.00
Riverwalk At Harbourside - Phase A	PB-JU-09-137	Town Of Jupiter	\$827,505.00	\$1,655,010.00
Jupiter Riverwalk - Phase I	PB-JU-99-81	Town Of Jupiter	\$429,025.00	\$1,255,050.00
Lake Shore Park Seawall Replacement	PB-LP-04-109	Town Of Lake Park	\$187,500.00	\$375,000.00
Lake Park Marina Revitalization - Phase I	PB-LP-98-73	Town Of Lake Park	\$150,000.00	\$360,000.00
Lake Park Municipal Marina Basin & Maintenance Dredging	PB-LP-94-32	Town Of Lake Park	\$67,803.00	\$123,752.00
Lake Park Marina Revitalization - Phase I I	PB-LP-99-80	Town Of Lake Park	\$584,000.00	\$1,168,000.00
Lake Park Harbor Marina Breakwater-phase I (Withdrawn)	PB-LP-08-130	Town Of Lake Park	\$62,254.00	\$124,508.00

FLORIDA INLAND NAVIGATION DISTRICT
WATERWAYS ASSISTANCE PROGRAM PROJECTS
IN PALM BEACH COUNTY - 1986-2014

PROJECT NAME	PROJECT NO.	PROJECT SPONSOR	GRANT AMOUNT	TOTAL COST
Lake Park Harbor Marina Breakwater-ph II (Withdrawn)	PB-LP-13-174	Town Of Lake Park	\$249,115.00	\$498,230.00
Lake Park Marina Revitalization - Phase I I I	PB-LP-00-91	Town Of Lake Park	\$542,000.00	\$1,145,000.00
Lake Park Marina Revitalization - Phase I V	PB-LP-01-93	Town Of Lake Park	\$451,000.00	\$902,000.00
Lake Park Harbor Marina Breakwater-ph II (Withdrawn)	PB-LP-09-138	Town Of Lake Park	\$349,292.00	\$698,585.00
Lake Shore Park Seawall Replacement	PB-LP-07-124	Town Of Lake Park	\$205,000.00	\$410,000.00
Bicentennial Park	PB-LA-92-25	Town of Lantana	\$57,000.00	\$114,000.00
Sportsman's Park	PB-LA-93-31	Town Of Lantana	\$152,875.00	\$340,750.00
North Lake Park	PB-LA-13-175	Town Of Lantana	\$104,000.00	\$208,000.00
Lantana Nature Preserve	PB-LA-99-79	Town Of Lantana	\$143,750.00	\$495,000.00
Route 2 Channel Markers (Expired)	PB-PA-11-156	Town Of Pahokee	\$20,850.00	\$30,000.00
Public Marina Wave Attenuator - Phase I (Expired)	PB-PA-11-157	Town Of Pahokee	\$37,500.00	\$75,000.00
Town Of Palm Beach Waterway - Phase I (Withdrawn)	PB-PB-12-164	Town Of Palm Beach	\$40,000.00	\$80,000.00
Australian Dock Replacement & Expansion	PB-PB-96-47	Town Of Palm Beach	\$21,000.00	\$105,000.00
Lake Worth Inlet Sand Transfer Plant Renovation	PB-PB-09-139	Town Of Palm Beach	\$300,000.00	\$2,248,000.00
Public Marina Dredging	PB-PB-92-23	Town of Palm Beach	\$200,000.00	\$250,000.00
Australian Dock Repl. & Expansion - Phase I I	PB-PB-97-56	Town Of Palm Beach	\$382,000.00	\$1,959,482.00
P.B.S. Inlet Park Redevelopment - Phase I	PB-PBS-02-102	Town Of Palm Beach Shores	\$25,000.00	\$50,000.00
Inlet Park Construction - Phase I I & I I I	PB-PBS-05-115	Town Of Palm Beach Shores	\$150,000.00	\$300,000.00
Anchorage Park Improvements	PB-NPB-08-131	Village Of North Palm Beach	\$200,000.00	\$700,000.00
Shoreline Protection Project - NPB Country Club	PB-NPB-92-21	Village of North Palm Beach	\$24,400.00	\$48,800.00
Lakeside Park	PB-NPB-06-119	Village Of North Palm Beach	\$150,000.00	\$300,000.00
Waterways Patrol And Rescue Vessel	PB-NPB-98-70	Village Of North Palm Beach	\$30,411.00	\$44,078.00
Shoreline Protection Program	PB-NPB-95-41	Village Of North Palm Beach	\$370,500.00	\$741,000.00
Lakeside Park	PB-NPB-90-11	Village of North Palm Beach	\$53,000.00	\$106,000.00
TOTALS			\$45,290,003.00	\$135,899,153.75

Agency Engineer													
Employer	Your Title	FLSA Status	Match (L,S,H)	Exec. (Y/N)	Supv. Level	Minimum	Midpoint	Maximum	Total EE in Dept.	Total Budget	Average Actual Salary	Reports to	
City of Coconut Creek	Utilities & Engineering Director	E	H	Yes	B	\$101,608	\$129,553	\$157,498	44	\$585,500.00	\$125,861	City Manager	
	SOUTH FLORIDA WATER MANAGEMENT DISTRICT Palm Beach Gardens	E	S		D	\$88,587	\$116,792	\$144,996	63	\$221K	\$118,012	DIVISION DIRECTOR - OMC	
		City Engineer	E	S	Yes	C	\$91,134	\$116,746	\$142,357	3	\$277,535.00	\$127,199	Deputy City Manager
		Engineering Director	E	H	Yes	B	\$87,000	\$113,250	\$139,500	111		\$139,500	Assistant County Administrator
	Martin County BOCC	Director Program Management	E		No	B	\$95,951	\$112,389	\$128,827	25		\$116,402	Chief of Support Operations
		Village of Wellington	E		No	B	\$90,000	\$110,000	\$130,000			\$122,653	Village Manager
City of Plantation		E	S	Yes	B	\$80,153	\$107,169	\$134,185	7	\$619,750.00	\$112,581	Mayor	
Town of Davie		E	S	No	B	\$88,689	\$106,742	\$124,795	6	\$1,060,627		Town Administrator	
The Village of Royal Palm Beach	Village Engineer	E	S	Yes	B	\$85,002	\$105,153	\$125,303	5	\$614,644.00	\$120,414	Village Mgr	
	CITY OF RIVERA BEACH	E	S	No	C	\$84,788	\$105,102	\$125,416	N/A	N/A	\$91,571	C	
	City of Delray Beach	E	S	Yes	C	\$80,246	\$104,301	\$128,356		\$718,470.00	vacant	Dir of ES	
	Town of Palm Beach	E	S	Yes	C	\$77,920	\$100,457	\$122,993	4		\$98,562	Public Works Dir.	
Town of Jupiter	Town Engineer	E	S	No	C	\$80,300	\$100,375	\$120,449	0		\$116,062	Director, Engineering, Parks &	
	CITY OF POMPANO BEACH	E	S		B	\$82,281	\$99,030	\$115,778	12	\$1,421,626	\$101,276	Public Works City Manager	
City of Dania Beach	City Engineer	E	S	No	C	\$76,434	\$98,438	\$120,442			\$91,844	Public Services Director	
CITY OF TAMARAC	City Engineer	E		No	B	\$72,913	\$97,895	\$122,877			\$122,877	Public Services Director	
	City of Boca Raton	E		Yes	C	\$74,986	\$95,577	\$116,168			\$109,594	Municipal Services Director	
City of Parkland	City Engineer	E	L	Yes	C	\$76,003	\$93,864	\$111,725	1		\$80,468	Director of Public Works	
City of Hallandale Beach	City Engineer	E	S	No	C	\$82,846	\$93,205	\$103,563	5		\$96,158	Director of Public Works/ Utilities/Engineering	
City of West Palm Beach	City Engineer	E	S		C	\$70,281	\$87,928	\$105,575	0			Director of Engineering Services and Public Works	
						Minimum	Midpoint	Maximum					
				Average:		\$79,387	\$98,713	\$120,038					
				3rd Quartile:		\$88,613	\$110,597	\$131,046					
				1st Quartile:		\$77,549	\$98,302	\$119,374					
				Median:		\$82,564	\$104,702	\$125,049					
						Actual Salary Results							
						3rd Quartile:	\$122,834			Simple Average:	\$94,462		
						1st Quartile:	\$100,597						

2014 PEPPIE SALARY SURVEY

Senior Engineer													
	Employer Name	Your Title	Match (L-S-H)	FLSA Status	Minimum	Midpoint	%tile	Maximum	# of Budget Positions	# of Filled Positions	Rank	Actual Salary	
City Of Margate	Engineer		L	NE	\$52,739	\$63,366	8%	\$73,993	2	2	13	\$67,882	
	Chief Engineering Inspector		S	EX	\$60,069	\$72,472	15%	\$84,875	1	1	5	\$84,875	
City Of Boca Raton	Utilities Engineering Manager		H	EX	\$57,250	\$76,055	23%	\$94,860	1	1	8	\$76,991	
	Civil Engineer II		S	EX	\$58,677	\$76,280	31%	\$93,884	1	1			
City Of West Palm Beach	Sr. Project Engineer		S	EX	\$63,678	\$79,598	38%	\$95,517		4	12	\$68,916	
	Assistant City Engineer		S	EX	\$61,942	\$80,527	46%	\$99,112	2	2	4	\$85,467	
South Florida Water Management District	ENGINEER SENIOR		S	EX	\$59,966	\$81,380	54%	\$102,793	22	21	9	\$75,853	
	Civil Engineer III		S	EX	\$67,692	\$81,471	62%	\$95,251	1	1	7	\$79,567	
City Of Pompano Beach	City Engineer		S	EX	\$66,541	\$83,371	69%	\$100,201	1	1	10	\$75,000	
	Senior Engineer		S	EX	\$66,973	\$83,717	77%	\$100,460	1	1	2	\$94,211	
Town Of Jupiter	Senior Engineer			EX	\$70,000	\$85,000	85%	\$100,000	2	1	11	\$72,092	
	Senior Engineer		H	EX	\$70,408	\$89,752	92%	\$109,096	2	2	6	\$84,001	
City Of Coconut Creek	Senior Engineer		S	EX	\$71,561	\$92,259	100%	\$112,956	1	1	1	\$112,953	
	CHIEF ENGINEER		S	NE		\$43,378		\$86,757	1	1	3	\$86,757	
					Minimum	Midpoint		Maximum					
		Average:			\$63,654	\$77,759		\$96,411					
		3rd Quartile:			\$67,692	\$83,630		\$100,395					
		1st Quartile:			\$59,966	\$76,111		\$94,128					
		Median:			\$63,678	\$80,953		\$97,315					
									Actual Salary Results				
						3rd Quartile:		\$85,467		Simple Average:		\$76,040	
						1st Quartile:		\$75,000		Weighted Average:		\$77,583	

2024 PEPIE SALARY SURVEY

Engineer/Project Engineer		Your Title	Match (L,S,H)	FLSA Status	Minimum	Midpoint	%ile	Maximum	# of Budget Positions	# of Filled Positions	Rank	Actual Salary
Town Of Jupiter	Engineer/Project Engineer	Engineer	S	EX	\$64,733	\$80,942	100%	\$97,130	2	2	7	\$71,645
Palm Beach County School District	Engineer	Engineer II	S	EX	\$63,360	\$79,763	94%	\$96,165		3	2	\$93,364
City Of Plantation	Engineer II	Civil Engineer II	S	EX	\$60,787	\$79,518	88%	\$98,248	2	2	3	\$82,303
City Of Pompano Beach	UTILITIES ENGINEER	UTILITIES ENGINEER	S	EX	\$64,470	\$77,592	82%	\$90,714	2	2	4	\$82,281
City Of Riviera Beach	Civil Engineer	Civil Engineer	S	EX	\$61,348	\$76,681	76%	\$92,013	1	1	5	\$80,000
City Of Coral Springs	Project Manager	Project Engineer	S	EX	\$61,000	\$76,500	71%	\$92,000	1	1	11	\$64,382
City Of Oakland Park	Project Engineer	Project Engineer	S	EX	\$58,677	\$76,280	65%	\$93,884	3	3		
City Of West Palm Beach	Project Engineer	Project Engineer	S	EX	\$57,689	\$72,112	59%	\$86,534	1	1	12	\$60,584
City Of Deerfield Beach	Project Engineer	Project Engineer	L	EX	\$56,800	\$71,000	53%	\$85,200	1	0		Unfilled
Village Of Royal Palm Beach	Project Engineer	Project Engineer	S	EX	\$57,091	\$70,626	47%	\$84,160	1	1	8	\$71,062
Town Of Palm Beach	Project Engineer (P.E.)	Civil Plans Reviewer	S	EX	\$68,154	\$68,154	41%	\$68,154	3	3	1	\$103,892
City Of Palm Beach Gardens	Capital Projects Coordinator	Engineer	L	EX	\$53,328	\$67,964	35%	\$82,599	1	1	15	\$53,328
City Of Stuart	Engineer	Engineer	H	EX	\$54,547	\$67,779	29%	\$81,011	2	2	6	\$72,537
City Of Coconut Creek	Engineering	Project Engineer	S	NE	\$52,790	\$67,298	24%	\$81,806	1	1	13	\$59,280
City Of Margate	Project Engineer	Engineer I	L	EX	\$52,739	\$63,366	18%	\$73,993	2	2	10	\$67,883
City Of Boca Raton	Engineer I	Engineer I	S	EX	\$47,569	\$62,608	12%	\$77,646	1	1	9	\$67,998
City Of Hallandale Beach					\$53,394	\$60,060	6%	\$66,726	5	5	14	\$59,030
					Minimum	Midpoint		Maximum				
				Average:	\$58,147	\$71,661		\$85,176				
				3rd Quartile:	\$61,348	\$76,681		\$92,013				
				1st Quartile:	\$53,394	\$67,779		\$81,011				
				Median:	\$57,689	\$71,000		\$85,200				
Actual Salary Results												
					3rd Quartile:	\$81,141		Simple Average:				\$64,092
					1st Quartile:	\$62,483		Weighted Average:				\$74,888

ENGINEER POSITION DESCRIPTIONS

115 Agency Engineer

Responsible for operating a professional engineering department both in the office and in the field. Responsible for formulating and carrying out all technical details of municipal engineering projects.

Bachelor's degree and seven years' experience. Must be a licensed Florida Professional Engineer.

506 Engineer/Project Engineer

Professional Civil Engineer work in the design, inspection, and coordination of construction of engineering projects.

Requires a Bachelor's degree in civil, mechanical, electrical or related engineering discipline. Florida Registered Professional Engineer and three years professional engineering experience.

507 Senior Engineer

Experienced professional engineering work in the design, inspection and coordination of construction projects. This is a supervisory position.

Requires Bachelor's degree in civil or related engineering discipline, P.E. Certification, and four to five years' experience with two years supervisory experience. Municipal experience is highly desirable.



August 26, 2015

Mr. Mark Crosley
Executive Director
Florida Inland Navigation District
1314 Marcinski Road
Jupiter, FL 33477

Re: Intracoastal Waterway Deepening Project, in the vicinity of Port of Palm Beach (Palm Beach Deepening)
Cavache, Inc. Bid Review

Dear Mr. Crosley:

On August 20, 2015, the Florida Inland Navigation District (FIND) received two bid packages for the Palm Beach Deepening project. The bid values were considerably different (\$804,078.00 difference) and the low bid was approximately 40% below Taylor Engineering's estimate of \$1,986,885.00. Cavache, Inc. (Cavache), the low bidder based in Deerfield Beach, Florida, submitted an all-inclusive bid of \$1,185,822.00.

We reviewed Cavache's bid package. It includes the required Bid Form, Bid Schedule, Bid Bond, Public Entity Crime Statement, and the Affidavit for Surety Company. Notably, Cavache's bid package is complete, well organized, and inclusive of a very detailed Work Plan and Quality Control Plan. The depth of detail included in Cavache's Work Plan and Quality Control Plan demonstrate a thorough understanding of the project and provide Taylor Engineering a high level of confidence in Cavache's understanding of the methodology, operations, and challenges incumbent in the Palm Beach Deepening project.

Cavache also included a copy of its active State of Florida General Contractor (No. CGC1520115) license. As of today, no official complaints against this license appear on the Florida Department of Business & Professional Regulation website (<https://www.myfloridalicense.com/>).

As evidence of its qualifications, Cavache submitted three similar projects for evaluation. These three projects include one FIND project completed in 2015, one Jupiter Inlet District project completed in 2014, and another FIND project completed in 2013. All three project descriptions cited hydraulic dredging of sediments in areas affected by strong tides, currents, and heavy boating traffic. One project involved beach placement of the dredged material and two involved operation of FIND Dredged Material Management Areas.

Lastly, our review included telephone discussions with Mr. Paul Cotter of U.S. Army Corps of Engineers, and Mr. Mike Grella of the Jupiter Inlet District, and Mr. Clinton Perryman of the Collier County Coastal Zone Management Division. In general, the three references had exceptionally positive feedback regarding their experience with Cavache. Finally, Taylor Engineering reviewed the individual Bid Items and concluded Cavache's bid is balanced. The main difference between the Engineer's Estimate and Cavache's bid is \$729,485 in mobilization cost. Since Cavache is a south Florida firm, their mobilization costs are reasonable.

Therefore, based on our review, we recommend that FIND award the Palm Beach Deepening contract to Cavache. Please contact me at (904)731-7040 with any questions or concerns.

Sincerely,

John Adams, P.E.
Senior Advisor

FLORIDA INLAND NAVIGATION DISTRICT**PALM BEACH DEEPENING PROJECT,
INTRACOASTAL WATERWAY,
PALM BEACH COUNTY, FLORIDA**

August 20, 2015

Bid List

<u>NAME OF FIRM</u>	<u>PROJECT BID</u>
Cavache, Inc.	\$1,185,822.00
Ferreira Construction	\$1,989,900.00

FLORIDA INLAND NAVIGATION DISTRICT
1314 Marcinski Road
Jupiter, FL 33477

PALM BEACH DEEPENING PROJECT
MEETING MINUTES
BID OPENING
August 20, 2015

A Public Meeting was held pursuant to Florida Statutes Section 255.0518 on Thursday, August 20, 2015 at 2 p.m. to open sealed bids for the Palm Beach Deepening project. Mark Crosley, Executive Director of the District, called the meeting to order at 2 p.m. Those in attendance were Anthony Cavo with Cavache, Michael Stevens with Collinsworth, Alter, Lambert, and Job Ireland with Ferreira Construction, and Janet Zimmerman, Assistant Executive Director, FIND.

Mr. Crosley verified that each bid package received was sealed and labeled in accordance with the Instructions to Bidders.

Mr. Crosley then opened each bid package and read aloud the name of the bidder and the amount of the bid, as follows:

<u>NAME OF BIDDER</u>	<u>AMOUNT OF BID</u>
Cavache, Inc.	\$1,185,822.00
Ferreira Construction	\$1,989,900.00

There being no other business, Mr. Crosley adjourned the meeting at 2:03 P.M.


Janet Zimmerman
Assistant Executive Director



**FIND MANDATORY PRE-BID MEETING AGENDA
TUESDAY, JULY 28, 2015 AT 11:00 AM**

**INTRACOASTAL WATERWAY DEEPENING IN VICINITY OF PORT OF PALM BEACH
PALM BEACH COUNTY, FLORIDA**

ITEMS:

1. OWNER REPRESENTATIVES

*Florida Inland Navigation District
1314 Marcinski Road
Jupiter, FL 33477
(561)-627-3386*

Mark Crosley (FIND) – Executive Director

2. ENGINEER REPRESENTATIVES

*Taylor Engineering, Inc.
10151 Deerwood Park Blvd.
Building 300, Suite 300
Jacksonville, FL 32256
(904) 731-7040*

John Adams, P.E. (TE) – Engineer of Record

3. PROJECT SCOPE

This project generally entails dredging approximately 101,000 cubic yards of material to a depth of -17 feet Mean Low Water, MLW (project depth of -15 feet and 2-foot allowable overdredge, +/-3,500ft long) from the Intracoastal Waterway (ICWW) located immediately west of Peanut Island in Riviera Beach, Palm Beach County, Florida. In accordance with permit conditions, material shall be dredged via the use of either a mechanical or hydraulic dredge to remove material. Dredged material shall be placed in the ±17-acre dredged material management area (DMMA) located on the north end of Peanut Island. The successful Bidder will have 150 calendar days from the Notice to Proceed to complete the project.

The major categories of work include, but are not limited to the following items:

1. Dredged Material Management Area Restoration and Operation
2. ADA- Accessible Pedestrian Walkway over dredge pipeline
3. Dredging

4. Dredged Material Transportation
5. Pre & Post-Construction Bathymetric Surveys
6. Environmental Components
 - a. Turbidity, Water Quality, and Erosion Control
 - b. Manatee Observation
 - c. Shorebird Monitoring

The selected Contractor must perform all work in accordance with the construction drawings and specifications, and the Florida Department of Environmental Protection and the U. S. Army Corps of Engineers permits.

4. KEY PROJECT CHALLENGES

1. Turbidity
2. Manatee Restrictions – Backhoe/Excavator dredging allowed during day light hours only from November 15th - March 31st.
3. Navigation Traffic

5. BID DOCUMENT REQUIREMENTS

Each bidder must submit the following items to the Florida Inland Navigation District by 2:00 p.m. on August 20, 2015:

1. Bid Form (Section 00 41 63) – including recognition of all addendums related to this project
2. Bid Schedule (Section 00 41 63A)
3. Bid Bond (Section 00 43 00)
4. Public Entity Crime Statement (Section 00 45 01)
5. Affidavit for Surety Company (Section 00 45 02)

6. RECEIPT AND OPENING OF BIDS

The Florida Inland Navigation District (District) will receive sealed bids for the construction of the District's Intracoastal Waterway Deepening project at its offices at 1314 Marcinski Road, Jupiter, Florida 33477 until **2 PM, local time August 20, 2015**. Contract will be awarded to the qualified, responsible, and responsive Bidder presenting the lowest bid. All bids shall be opened at a public meeting and the name of each bidder and the price submitted in the bid shall be read aloud. Any bids received after the time and date specified will not be considered, but will be returned unopened.

7. DOCUMENTATION TO BE SUBMITTED WITH BID

1. Copies of the Bidder's State or County (as applicable) Contracting licenses
2. References
3. Similar Projects
4. Bidder's Plan
 - a. Equipment Listing
 - b. General Dredging Plan
 - c. Quality control plan

8. ANTICIPATED PROJECT SCHEDULE AND DURATION

1. Bid Documents Received on August 20, 2015
2. District Board Approval of the Qualified Bid on September 12, 2015
3. Notice of Award on September 28, 2015
4. Notice to Proceed on October 23, 2015
5. Final Day of Construction (150 days from Notice to Proceed)

6. CONSTRUCTION COORDINATION

The Contractor will coordinate all submittals and applications for payment through Taylor Engineering throughout the life of the contract. As an exception, the Contractor will submit notices to the U.S. Coast Guard (see Section 35 20 23.13) directly to the U.S. Coast Guard and copy Taylor Engineering on all such notices.

7. WRITTEN ADDENDUM

Taylor Engineering will receive written questions from bidders until Wednesday August 12, 2015. FIND will respond to these questions with a written addendum issued by 5:00 p.m. on Friday August 14, 2015.

8. BIDDER'S QUESTIONS

Taylor Engineering will generally address questions at this time; however, all official answers will only be provided in response to written questions. The written questions and answers will be provided in an addendum, which will govern over any response given at this time.

9. DMMA SITE VISIT

--END OF AGENDA--

December 3, 2013

SUMMARY OF THE DEEPENING & DREDGING PROJECT FOR THE INTRACOASTAL WATERWAY (IWW) IN PALM BEACH COUNTY (VICINITY OF PEANUT ISLAND)

(USACE FILE NO. SAJ-2012-01719 (SP-SLR), FDEP FILE NO. 50-0294306-002)

ISSUE. Existing depths in the IWW segment in the vicinity of Peanut Island, part of the federally authorized channel, are currently permitted to -10 feet (ft) Mean Low Water (MLW). The proposed 0.66 mile project currently requests deepening the channel to -15 ft MLW (with an allowable -2 ft overdredge to achieve and maintain project depth) and placing the dredged material in the adjacent 17-acre FIND-owned Dredged Material Management Area on Peanut Island. However, after nearly a year and a half of permitting efforts, the October 17, 2013 U.S. Army Corps of Engineers (USACE) Request for Additional Information (RAI) requested FIND consider reducing the project depth to -13 ft MLW.

BACKGROUND & JUSTIFICATION. The proposed project need originates from an increased number of larger vessels that require a deeper channel for safe navigation and the location of facilities within the project template that service these vessels (Rybovich, Viking Yachts, City of Riviera Beach Marina) or require the additional operational depth (Lockheed Martin). Based on an April 2011 economic analysis of local city, county, and industry groups, implementation of the currently proposed project — deepening 0.66 mile of the 5.2 miles of the original project length — would result in significant annual benefits of: *\$7.3 million for servicing 160 – 180 ft Loa (length overall) vessels (that draft in excess of 10 ft), \$73.7 million for vessels up to 180 – 240 ft Loa, and \$185.3 million for vessels up to 240 – 280 ft Loa.*

Based on vessel design drafts, projected future growth, and industry trends described in the 2011 analysis, and to capture the full economic benefit associated with these vessels, engineering guidelines suggest a channel between -17 ft and -20 ft MLW. However, to avoid and minimize environmental impacts (see below), FIND has agreed to reduce its requested channel depth to -15 ft MLW and width to 100 ft (from the federally authorized 125 ft). Limiting the channel depth further would greatly reduce the channel functionality and associated economic benefits, as well as position the project to be unsuccessful and obsolete prior to construction.

AVOIDANCE & MINIMIZATION OF ENVIRONMENTAL IMPACTS. The original economic study indicated that the ideal channel depth would range between -17 ft and -20 ft MLW. The initial permitting process (June 2012) resulted in a depth reduction to -17 ft MLW. In an effort to further reduce environmental impacts and maintain safe navigation, FIND reduced the requested depth (in its August 2013 response to a USACE RAI) to -15 ft MLW. This modification to the proposed project depth matches the 2001 USACE Detailed Project Report recommendation. The change also reduced the overall seagrass impacts from 6.78 acres to 5.82 acres and the hardbottom impacts from 0.22-acre to 0.15-acre.

The USACE has recently indicated that a depth greater than -13 ft MLW may require an Environmental Impact Statement (EIS). However, technical data counters that the currently proposed project includes a fraction of the original project length (0.66 mile vs. 5.2 miles) and results in significantly less seagrass impacts (5.82 acres vs. 31.01 acres) than listed in the 2001 USACE Detailed Project Report. Figure 1 provides a plan view of the proposed project and a tabular summary of seagrass and hardbottom impacts for four alternative project depths. The figure shows a minimal (i.e., 0.46-acre or 8.35%) increase in IWW channel impacts between the -13 ft and -15 ft MLW project. Notably, most of these contemplated submerged natural resource impacts would occur during any approved, routine maintenance dredging event required to restore the channel to its current -10 ft MLW design.

RECOMMENDATION. FIND conducted a teleconference with the USACE on November 19, 2013 to discuss the overall project need and relay its objections to the USACE's suggestion to consider a shallower design depth or extend the project timeline through an EIS. FIND strongly believes that the reduced project footprint from 5.2 miles (2001 USACE Detailed Project Report) to 0.66-mile (proposed project), reduced seagrass impacts (from 31.01 acres to 5.82 acres), and provision of the previously provided avoidance and minimization analysis do not justify an EIS for this project. Secondly, most of the proposed resource impacts would occur during routine IWW maintenance dredging events. The benthic resource impacts between a maintenance dredging event (i.e., -10 ft MLW) and the proposed project depth (-15 ft MLW) would result in a net increase of only 1.94 acres of seagrass and 0.12-acre hardbottom impact. Rather than constructing a project depth that would result in a short-term solution and limited economic benefit to the area (-13 ft MLW project), FIND is committed to providing the optimum project (-15 ft MLW project) for the long-term success of the area at a minimal increase in environmental resource impacts.

PROJECT MAP.

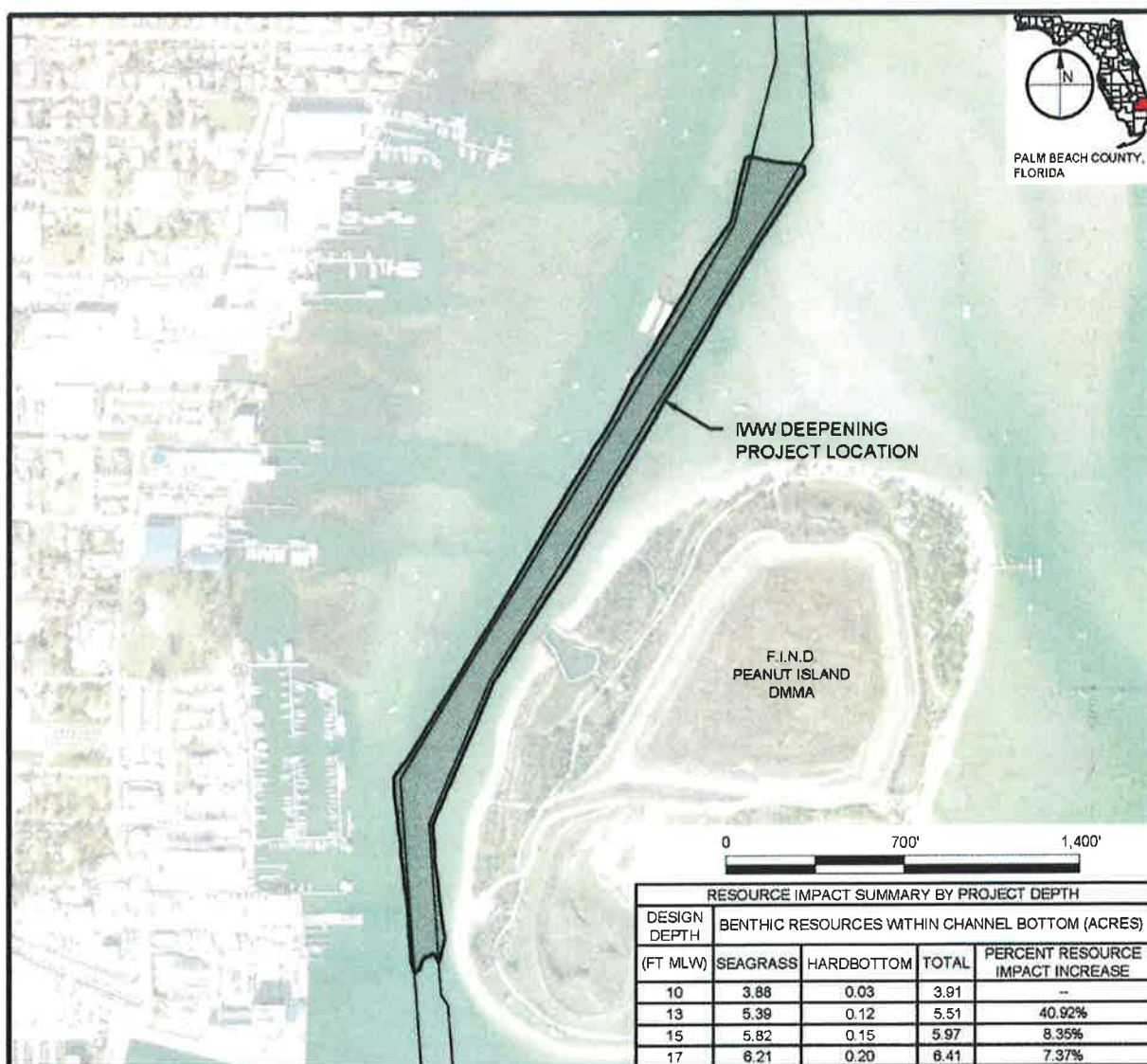


Figure 1. FIND IWW Deepening Project in vicinity of the Port of Palm Beach



August 28, 2015

Mr. Mark Crosley
Executive Director
Florida Inland Navigation District (FIND)
1314 Marcinski Rd
Jupiter, FL 33477

RE: Scope of Professional Engineering Services
St. Lucie Reach I Maintenance Dredging Utility Survey
St. Lucie County, Florida

Mr. Crosley:

Per your request, Taylor Engineering has prepared the attached Scope of Services (Attachment A) and Cost Proposal (Attachment B) for a utility survey related to the above-referenced dredging project.

Taylor Engineering will complete the work described herein for a cost-plus-maximum fee of \$49,541.80. Of this amount, \$39,618.00 represents the proposed fee for our surveying subconsultant, Morgan & Eklund, Inc (M&E). Their proposal is included as Attachment C. Taylor Engineering selected M&E due to their recent bathymetric survey work, under direct contract to FIND, in St. Lucie County. Taylor Engineering will use this survey information to update and complete the plans and specifications for the upcoming St. Lucie Reach I maintenance dredging project.

Please contact me with any questions you have regarding this effort. We can begin work upon your notice to proceed.

Sincerely,

John Adams, P.E.
Senior Advisor, Waterfront Engineering

Attachments (3)

ATTACHMENT A

**SCOPE OF PROFESSIONAL ENGINEERING SERVICES
ST. LUCIE REACH I MAINTENANCE DREDGING UTILITY SURVEY
ST. LUCIE COUNTY, FLORIDA**

INTRODUCTION

This scope of professional engineering services describes Taylor Engineering's (TAYLOR'S) effort to support a proposed project for maintenance dredging of Reach I of the Intracoastal Waterway (ICWW) in St. Lucie County, Florida. Dredged material disposal would occur within the Florida Inland Navigation District's (FIND's) Dredged Material Management Area (DMMA) SL-2. FIND intends to conduct a maintenance dredging event at the St. Lucie Reach I portion of the ICWW from Cut SL-2, south through Cut SL-5 (STA 225+00) in St. Lucie County, Florida. The ICWW would be dredged to -12 feet mean lower low water (MLLW) north of the Fort Pierce Inlet and to -10 feet MLLW south of the Fort Pierce Inlet with a 2-foot overdredge throughout.

FIND engaged TAYLOR to develop final designs and perform construction administration services for the project. In support of this effort, TAYLOR and its subcontractor Morgan & Eklund (M&E) will provide: (1) a report that summarizes research of available utility crossing information, and (2) verification of utility locations (if any) via a magnetometer, sidescan sonar, and seismic survey.

TASK 1. UTILITY SURVEY

M&E completed a bathymetric survey of the project area in May 2014. As a follow up to the bathymetric survey, M&E will complete a limited utility and magnetometer survey in the proposed project. The survey scope of work will include magnetometer, sidescan sonar, and seismic survey along the ICWW centerline together with longitudinal lines 50' left, 100' left, 200' left, 50' right, 100' right, and 200' right. Deliverables will include a report that documents the research of utility crossing information between Cut SL-2 STA 00+00 and Cut SL-5 STA 255+00 (31,000 linear feet or 5.9 miles). The report, along with backup documentation (inclusive of as-built surveys and permit and easement documentation) from the actual utility companies, shall clearly indicate the locations of utilities within the project area. A signed and sealed survey indicating the 2014 bathymetric survey data and newly acquired utility information will provide detailed cross-sections showing the utility location, depth of burial, and the dredge design template.

ESTIMATED SCHEDULE

No.	Task	Months from Notice to Proceed							
		1	2	3	4	5	6	7	8
1	Utility Survey								

ATTACHMENT B

TAYLOR ENGINEERING, INC.
COST SUMMARY BY TASK
P2015-119: FIND ST LUCIE REACH I UTILITY LOCATION

TASK 1:

<i>Labor</i>	Hours	Cost (\$)	Task Totals
Vice President	2.0	370.00	
Senior Advisor	4.0	744.00	
Senior Professional	16.0	2,256.00	
Senior Technical Support	24.0	2,592.00	
Total Man-Hours	46.0		
Labor Cost			5,962.00
<i>Non-Labor</i>	Units	Cost (\$)	
Morgan and Eklund Utility Location Services	1.0	39,618.00	
Fee @ 10.0%		3,961.80	
Total Non-Labor Cost			43,579.80
<i>Total Task 1</i>			\$ 49,541.80

Project Total \$ 49,541.80



MORGAN & EKLUND, INC.
PROFESSIONAL SURVEY CONSULTANTS

July 23, 2015

Taylor Engineering, Inc.
Attn: Mr. Bill Aley, P.G.
10151 Deerwood Park Blvd.
Building 300, Suite 300
Jacksonville, Florida 32256

RE: Magnetometer, Sidescan Sonar and Seismic Survey of St. Lucie County ICWW from STA 0+00 to STA 225+00 at SL-5 (31,000 linear feet or 5.9 Miles)

Dear Bill:

Morgan & Eklund, Inc. is pleased to provide you with the following proposal to furnish professional hydrographic survey services for the above referenced project.

Morgan & Eklund, Inc. (in conjunction with Sonographics) will perform a magnetometer, sidescan sonar and seismic survey along the ICWW centerline together with longitudinal lines 50' left, 100' left, 200' left, 50' right, 100' right and 200' right.

Prior to the survey, a drawing will be compiled showing the location of submerged lands easements, and known utility line crossings that affect the survey area.

This map will be sent to the utility companies (i.e. Florida Gas, FP&L, Bell South, AT&T, Sprint, CATV, County/City public works, water/sewer, etc) to ask them to verify their submarine utility line locations and depths together with providing the as-built surveys. The results of the channel bottom survey will be plotted in plan view and the depths obtained from the seismic data will be plotted in cross-section view. The cost for these survey tasks are as follows:

I. Obtain historical data from utility companies and FDEP (permits and submerged land easements)

- Send letter to utility companies advising of project area
- Compile utility crossing map from utility company responses

Chief Surveyor

24 hours @ \$135/hr \$ 3,240.00

Project Surveyor

40 hours @ \$85/hr \$ 3,400.00

Computer Technician

40 hours @ \$65/hr \$ 2,600.00
\$ 9,240.00

Total I..... \$ 9,240.00

Mr. Bill Aley, P.G.
 July 23, 2015
 Page (2)

II. Field Survey *

Data Collection along longitudinal lines @ 50' spacing (7 lines x 31,000' each = 41 miles total)

- A. Morgan & Eklund, Inc. will provide a 26' Survey Boat, Operator, Trimble GPS and Hypack Navigation Software.

Chief Surveyor	
2 hours @ \$135/hr	\$ 270.00
Project Surveyor	
10 hours @ \$85/hr	\$ 850.00
Survey Technician	
10 hours @ \$65/hr	\$ 650.00
Trimble DGPS	
1 day @ \$350/day	\$ 350.00
26' Survey Boat	
1 day @ \$450/day	\$ 450.00
	\$ 2,570.00/day

X 4 days = \$ 10,280.00

- B. Sonographics will provide the Sidescan Sonar, Magnetometer, Sub Bottom Profiler and Systems Operator. **

Lump Sum Fee \$ 13,158.00

Total II, A-B \$ 23,438.00

*Includes one day for mobilization and demobilization

**See attached proposal from Sonographics

Mr. Bill Aley, P.G.
 July 23, 2015
 Page (3)

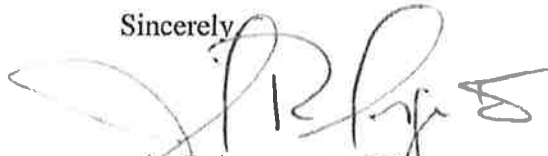
III. Data Reduction, Plotting of Sidescan Sonar and Seismic targets together with magnetic anomalies

Chief Surveyor	
12 hours @ \$135/hr	\$ 1,620.00
Project Surveyor	
32 hours @ \$85/hr	\$ 2,720.00
Computer Technician	
40 hours @ \$65/hr	\$ 2,600.00
	\$ 6,940.00

Total Cost I-III\$ 39,618.00

As always, Morgan & Eklund, Inc. appreciates to work with you and Taylor Engineering, Inc. on this project.

Sincerely



John R. Morgan, II, PLS
 President

JRM:sm

SONOGRAPHICS

Remote Sensing Excellence

July 23, 2015

John Morgan
Morgan & Eklund
8745 U.S. Hwy 1, P.O. Box 1420
Wabasso, Fl. 32970

Dear John:

SONOGRAPHICS, INC. is pleased to respond to your request for Geophysical Survey Services for the location of utility crossings in the Intracoastal Water Way in Reach I at Ft. Pierce, St. Lucie County, Florida. We propose to provide the following:

SCHEDULE OF EQUIPMENT AND OPERATORS:

EdgeTech Digital Chirp Side-scan Sonar System
Geometrics G-882 Digital Cesium Magnetometer System
EdgeTech SB-216S Digital chirp Sub-bottom Profiler System
Geophysicist / Systems Operator / Technician
Honda 2KW generator

SCHEDULE OF DELIVERABLES:

- 1) Digital Sonar Mosaic of Surveyed Areas.
- 2) Digitized map of bottom features including any detected utilities.
- 3) Magnetic Contour Map.
- 4) Table of utility related or suspected magnetic anomalies.
- 5) Track Maps of the Sub-bottom lines run as DXF files.
- 6) Digital profiles of each seismic line with utility related or suspected anomalies outlined in the form of HTML JPEG files.

SCHEDULE OF COSTS:

Lump Sum Fee for Field Survey, Post Processing and all Deliverables:

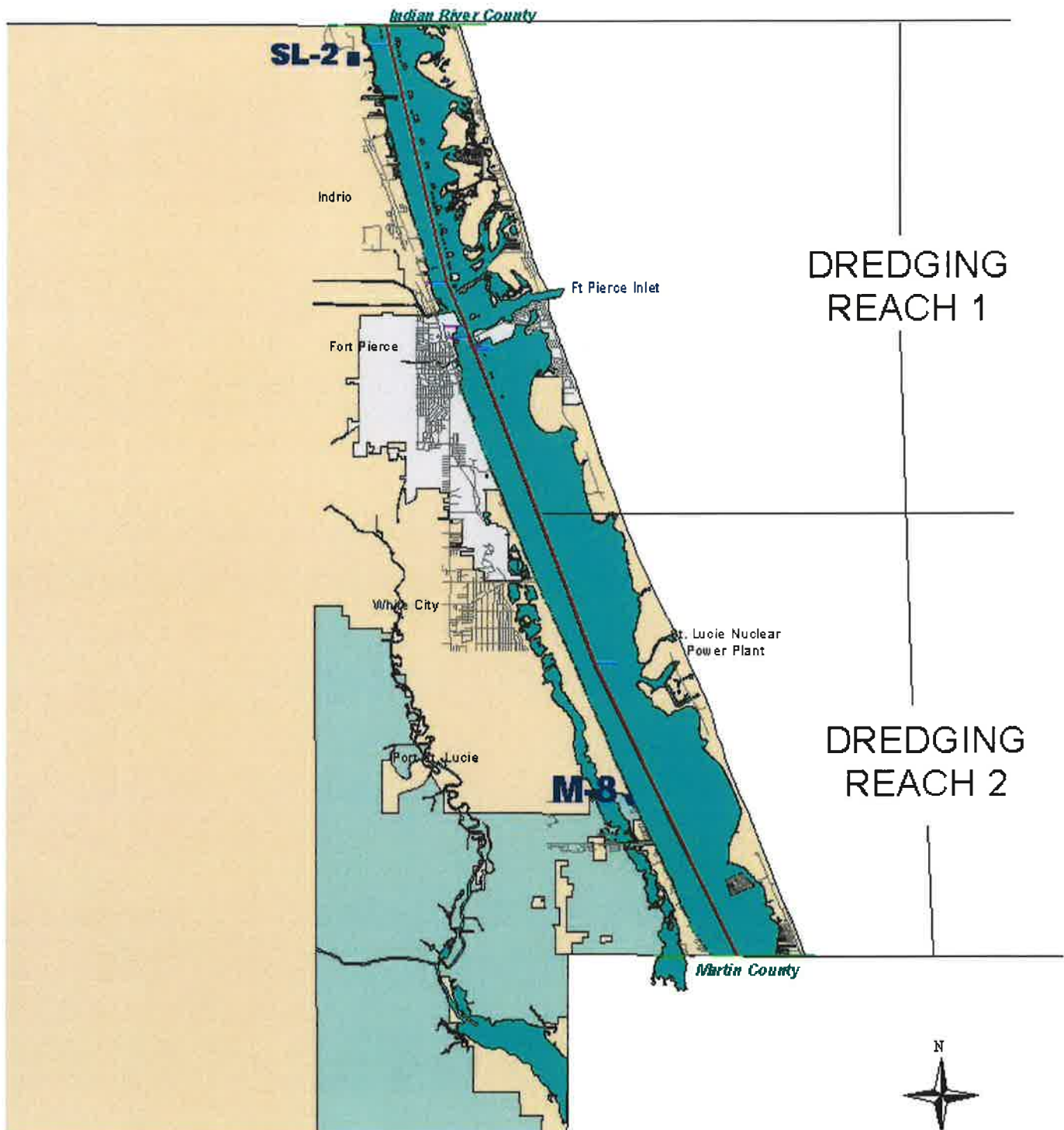
\$13,158.00

The above quotation includes per diem expenses, transit, freight and expendables. If I can be of further assistance please do not hesitate to call. Quotation is valid for 60 days.

Sincerely,





F. N. "Rick" Horgan
SONOGRAPHICS, INC.

LONG RANGE DREDGED MATERIAL
MANAGEMENT PLAN
FOR THE INTRACOASTAL WATERWAY
IN ST. LUCIE COUNTY

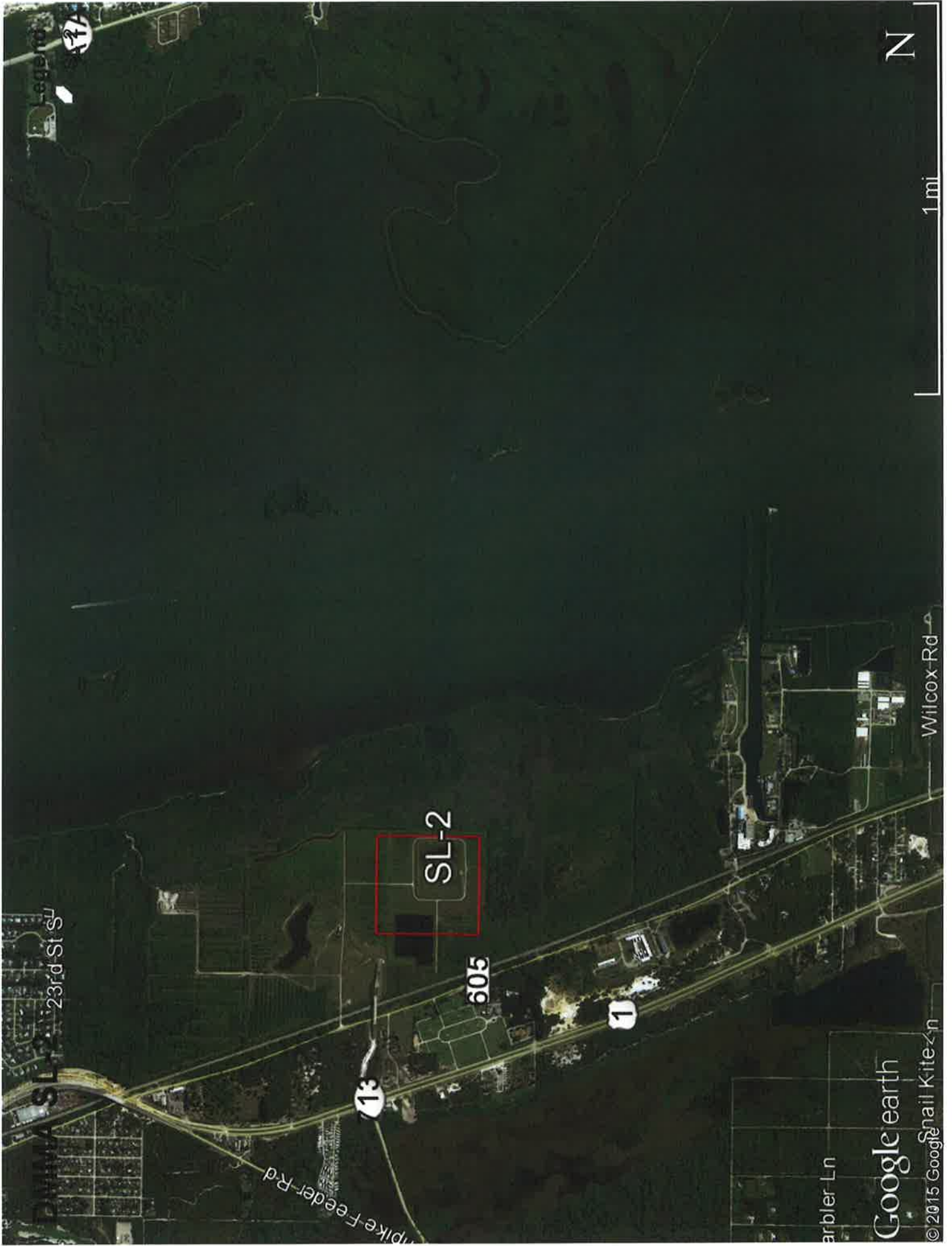


DMMA SL-2



-  FIND Easement
-  FIND Owned
-  Channel
-  ICW Right-of-Way





arbler Ln

Wilcox Rd

© 2015 Google

Google earth

1 mi

N

WATERWAY ASSISTANCE PROJECTS REQUIRING A ONE (1) YEAR EXTENSION

Project Sponsor	Project Name	Project Number	Reason for Extension
Miami- Dade County	Crandon Marina Boat Ramp Renovations - Ph I	DA-13-159	Permitting delays (DERM)
Miami- Dade County	Matheson Hammock Marina Boat Ramp Renovations Ph I	DA-13-160	Permitting delays (DERM)
Miami- Dade County	Miami River Greenway Sites 4 & 5	DA-13-161	Additional time needed for completion
City Of Miami Beach	Indian Creek Park Seawall - Ph I	DA-MB-13-157	Additional time needed for completion
City Of Miami	Curtis Park Boat Ramp Repair & Reconstruction - Ph II	DA-MI-13-154	Additional time needed for completion
City Of Miami	Manatee Bend Park Seawall & Floating Dock - Ph II	DA-MI-13-156	Additional time needed for completion
Indian River County	Jones' Pier Waterfront Improvements	IR-13-55	Additional time needed for completion
City Of Fort Pierce	Fishing Pier & Cleaning Station On Melody Lane	SL-FP-13-55	Additional time needed for completion
Volusia County	Highbridge Park Expansion - Ph I	VO-13-99	Additional time needed for completion
Indian River County	Boat Club Island (IR-25) Dock Repair	SI-IR-13-01	Additional time needed for completion



miamidade.gov

Parks, Recreation and Open Spaces Department

275 N.W. 2nd Street
Miami, Florida 33128
T 305-755-7878

August 17, 2015

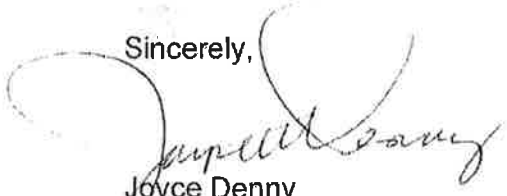
Janet Zimmerman
Assistant Executive Director
Florida Inland Navigation District
1314 Marcinski Road,
Jupiter, Florida 33477-9427

Re: Grant Extension Request: Crandon Boat Ramps Renovations Planning DA-13-159

Dear Ms. Zimmerman:

We hereby request a one year extension on the term of the above referenced grant.
We are still waiting for Miami-Dade DERM to approve permits.

Sincerely,



Joyce Denny
Grants Specialist



miamidade.gov

Parks, Recreation and Open Spaces Department

275 N.W. 2nd Street
Miami, Florida 33128
T 305-755-7848

August 6, 2012

REC'D

AUG 14 2015

Florida Inland
Navigation District

Ms. Janet Zimmerman
Assistant Executive Director
Florida Inland Navigation District
1314 Marcinski Road
Jupiter, Florida 33477-9427

Matheson Hammock Marina Boat Ramps Phase 1 DA-13-160

Dear Ms. Zimmerman:

We request a one year grant extension for the above referenced grant, because the permitting process from DERM is now running behind. If the permits are not received by mid-September, we will have to withdraw the construction grant application.

Sincerely,

A handwritten signature in blue ink, appearing to read "Joyce Denny".

Joyce Denny
Grants Administrator



miamidade.gov

REC'D

AUG 17 2015

Florida Inland
Navigation District

Public Works and Waste Management

2525 NW 62nd Street • Suite 5100

Miami, Florida 33147

T 305-514-6666

111 NW 1st Street • Suite 1610

Miami, Florida 33128

T 305-375-2960

August 12, 2015

Ms. Janet Zimmerman
Assistant Executive Director
Florida Inland Navigation District
1314 Marcinski Road
Jupiter, Florida 33477-9427

RE: FY 2013-2014 FIND Assistance Program—Project Completion and Grant Extensions
Miami River Greenways Riverwalk Sites 4 & 5—Project Number DA-13-161

Dear Ms. Zimmerman:

The Miami-Dade Public Works and Waste Management Department respectfully requests a grant extension. The expiration date of the subject FIND Agreement is currently September 30, 2015. While the project's construction is proceeding toward completion, PWWM will not be able to submit all of the closeout paperwork by September 01, 2015 as stated in your letter dated July 24, 2015. The reason for this delay is due to postponed construction commencement date caused by late delivery of the sheet piles by the manufacturer which impacted the Contractor's critical path. Also, unforeseen field conditions with utilities during the construction of the sheet pile walls caused modifications to the structural design. Additionally, utility conflicts encountered on site 4 prevented directional boring operation to take place in order to connect to the power source. Consequently, this caused delays of approval of an alternative power source route between FPL's service point and proposed load center. The current status of completion of site 4 is 80% and site 5 is 60%. The anticipated end date of construction is October 15, 2015. Please see attached revised construction schedule.

Therefore, the Miami-Dade County Public Works and Waste Management Department respectfully requests an extension of the FIND Agreement for one additional year to provide sufficient time to complete the construction of the project and submit the closeout paperwork.

Should you have any questions, please do not hesitate to contact Ms. Lana Moorey, P.E., Project Manager at (305) 375-2863.

Sincerely,

A handwritten signature in blue ink, appearing to read "Leandro Oña".

Leandro Oña, P.E.
Chief, Roadway Engineering and Right-of-Way Division

Enclosure

cc: Antonio Cotarelo, P.E.
Gaspar Miranda, P.E.
Javier Heredia, P.E.
Lana Moorey, P.E.

MIAMI BEACH

City of Miami Beach, 1700 Convention Center Drive, Miami Beach, Florida 33139, www.miamibeachfl.gov

OFFICE OF BUDGET AND PERFORMANCE IMPROVEMENT, Grants Management
Tel: 305-673-7510, Fax: 786-394-4675

August 25, 2015

Ms. Janet Zimmerman
Assistant Executive Director
Florida Inland Navigation District
1314 Marcinski Rd
Jupiter, Florida 33477

Re: **Indian Creek Seawall – Phase I**
Project No.: **DA-MB-13-157**

Dear Ms. Zimmerman:


The City of Miami Beach respectfully requests an eleven-month extension to FIND for Indian Creek Seawall Phase I Project No. DA-MB-13-157. The current deadline is September 30, 2015 and the City is requesting an eleven-month extension to **August 31, 2016**. Below is the reason why the City will need an extension.

The City of Miami Beach is currently re-evaluating the rehabilitation of its seawalls to protect native mangroves and incorporate green infrastructure for shoreline stabilization, and would like to take the opportunity to integrate a hybrid shoreline stabilization system design to the Indian Creek Park Seawall, including "living shorelines". The living shoreline will use a suite of bank stabilization and habitat restoration techniques to reinforce the shoreline, minimize coastal erosion, and maintain coastal processes while protecting, restoring, enhancing, and creating natural habitat for fish and aquatic plants and wildlife. The extension will allow the City to potentially incorporate additional mangrove habitat and native vegetation to the design and construction of the shoreline stabilization of the Indian Creek Park Seawall Project.

The City anticipates having the updates to the design updates completed by December 2015, construction to begin in February 2016 and be completed by August 2016.

We appreciate the Department's consideration of this extension request to **August 31, 2016**. If you have any questions or concerns, please do not hesitate to contact me at 305-673-7510.

Sincerely,



Judy Hoanshelt
Grants Officer

Approved:

Name:

Title:

Cc: Elizabeth Wheaton, CMB

City of Miami



DANIEL J. ALFONSO
City Manager

August 21, 2015

Ms. Janet Zimmerman
Assistant Executive Director
Florida Inland Navigation District
1314 Marcinski Rd
Jupiter, Florida 33477

Re: Time Extension Request
Curtis Park Boat Ramp Repair & Reconstruction –Phase II #DA-MI-13-154
City Project B-35806

Dear Ms. Zimmerman:

The City of Miami ("City") respectfully seeks a one-year extension of time for the Curtis Park Boat Ramp Repair & Reconstruction –Phase II #DA-MI-13-154 Project ("Project"). The Project plans are at 90% completion status and the City now seeks to bid the Project. In order to accommodate the bid solicitation and bid award timelines and the schedule for the construction work to be completed, the City finds it is necessary for the obtain an extension of time to the Project Agreement which is currently scheduled to expire on September 1, 2015.

If this time extension request to the Project Agreement is approved, the contract expiration date would be extended through September 1, 2016 which would provide the City with sufficient time to complete the Project. The City anticipates it could issue a Notice to Proceed (NTP) for the Project by December 15, 2015. The proposed new Project Milestones would be as follows:

Bid Solicitation/Vendor Award	150 days
Construction & Substantial Completion	180 days
Project Close-Out (incl. Final Punch List)	45 days

Your approval to extend the term of the Project Agreement would be greatly appreciated. Should you have any questions, please contact me in the office at (305) 416-1395.

August 21, 2015
Page 2

Sincerely,



Chelsa Arscott
Special Projects Coordinator
Capital Improvements and
Transportation Program

Cc: Jeovanny Rodríguez, P.E., Assistant Director, CITP
Lai-Wan McGinnis, Budget & Financial Reporting Administrator, CITP
Jose Oliveros, P.E., Chief of Construction, CITP
Maria Pineda, Senior Project Manager, CITP
Andre Bryan, P.E., Electrical Engineer, CITP
Tymekia Gibson, Administrative Aide, CITP

City of Miami



DANIEL J. ALFONSO
City Manager

August 19, 2015

Ms. Janet Zimmerman
Assistant Executive Director
Florida Inland Navigation District
1314 Marcinski Rd
Jupiter, Florida 33477

Re: Time Extension Request
Manatee Bend Park Seawall & Floating Dock – Phase II #DA-MI-13-156
City Project B-30801

Dear Ms. Zimmerman:

The City of Miami ("City") respectfully seeks a one-year extension of time for the Manatee Bend Park Seawall & Floating Dock – Phase II #DA-MI-13-156 Project ("Project"). The Project is in process; the design Phase I is completed and the City now seeks to commence the Phase II Project which necessitates the time extension in order for the City to bid the Project and complete the construction work. The Phase II Project Agreement is currently scheduled to expire on September 1, 2015 which does not provide sufficient time for the City to complete the construction phase.

If this time extension request is approved, the new contract expiration date would be extended through September 1, 2016 which would provide the City with sufficient time to complete the Project. The City anticipates it could issue a Notice to Proceed (NTP) for the Project by January 25, 2016. At NTP, the City would also seek to submit for the cost reimbursement of the Project Phase 1 for the design fees incurred by the City as per the executed Phase 1 Project Agreement. The proposed new Project Milestones would be as follows:

Bid Solicitation/Vendor Selection	150 days
Construction & Substantial Completion.	120 days
Project Close-Out (incl. Final Punch List)	45 days

Your approval to extend the term of the Project Agreement would be greatly appreciated. Should you have any questions, please contact me in the office at (305) 416-1395.

August 19, 2015
Page 2

Sincerely,



Chelsa Arscott
Special Projects Coordinator
Capital Improvements and
Transportation Program

Cc: Jeovanny Rodriguez, P.E., Assistant Director, CITP
Lai-Wan McGinnis, Budget & Financial Reporting Administrator, CITP
Jose Oliveros, P.E., Chief of Construction, CITP
Nelson Cuadras, P.E., Senior Construction Manager, CITP
Sandra Vega, Associate AIA, Project Manager, CITP
Tymekla Gibson, Administrative Aide, CITP



INDIAN RIVER COUNTY
Environmental Planning & Code Enforcement Section
 1801 27th Street, Vero Beach FL 32960
 772-226-1249 / 772-978-1806 fax
www.ircgov.com

August 17, 2015

Janet Zimmerman
 Assistant Executive Director
 Florida Inland Navigation District
 1314 Marcinski Road
 Jupiter, FL 33477-9427

Re: Request for Project Agreement Extension – Project # IR-13-55
 Jones's Pier Waterfront Improvements

Dear Janet:

This letter is to formally request a one year extension to the Jones's Pier Waterfront Improvements Waterways Assistance Program project (# IR-13-55). The extension is requested in that installation of all project improvements is not expected to be completed by the September 1, 2015 timeframe of the current project agreement.

Project Status and Anticipated Completion Date

The Jones's Pier Waterfront Improvements project consists of re-decking and repair of the historic main pier; removal and replacement of a single-family dock; installation of a boatlift for a marine patrol vessel; and installation of a kiosk and educational signage. Re-decking and repair of the docks has been completed, as well as installation of the boatlift pending electrical hookup. Installation of a kiosk and signage has yet to occur. Full completion of the project is anticipated to occur by January 2015.

Thank you and FIND for your assistance on this matter. If you have any questions or require more information, please let me know (772/226-1258, rdeblois@ircgov.com).

Sincerely,

Roland M. DeBlois, AICP
 Chief, Environmental Planning
 & Code Enforcement Section

Cc: Stan Boling



CITY HALL, 100 NORTH U.S. 1
P.O. BOX 1480
FORT PIERCE, FLORIDA 34954-1480

TEL (772) 467-3169
FAX: (772) 466-5808
www.cityoffortpierce.com

August 18, 2015

Ms. Janet Zimmerman
Assistant Executive Director
Florida Inland Navigation District
1314 Marcinski Road
Jupiter, Florida 33477

Dear Janet,

Please accept this as my written request to extend the City of Fort Pierce's grant for Project #SL-FP-13-55, "Fishing Pier and Fish Cleaning Station on Melody Lane" for one year, until September, 2016.

The pier is currently under construction and we expect it to be completed by the end of this year, however, we are aware that the grant for Project #SL-FP-13-55 was awarded to the City of Fort Pierce in 2013 and expires on September 30, 2015.

Thank you very much for your timely consideration of this request.

Sincerely,

A handwritten signature in cursive script that reads 'Libby Woodruff'.

Libby Woodruff
Grants Administrator



Volusia County FLORIDA

Community Services Parks, Recreation, and Culture Division

202 North Florida Avenue • DeLand, Florida 32720-4618

(386) 736-5953 • (386) 257-6000, Ext. 5953 • (386) 423-3300, Ext. 5953 • Fax: (386) 943-7035

www.volusia.org

Florida Inland Navigation District

Janet Zimmerman

1314 Marcinski Rd.

Jupiter, FL 33477

RE: Extension request for phase one project #VO-13-99

Ms. Zimmerman,

The County of Volusia Parks, Recreation, and Culture division would like to request a one year extension for our phase one project number VO-13-99 at Highbridge Park. We need additional time to finalize design and gather the necessary documents for reimbursement before going to construction. We appreciate your consideration and if you need any further information please let us know.

Sincerely,



Aaron Van Kleeck

Administrative Coordinator II

Parks, Recreation, and Culture

202 N. Florida Ave.

Deland, FL 32724

avankleeck@volusia.org



INDIAN RIVER COUNTY
Environmental Planning & Code Enforcement Section
 1801 27th Street, Vero Beach FL 32960
 772-226-1249 / 772-978-1806 fax
www.ircgov.com

August 19, 2015

Janet Zimmerman
 Assistant Executive Director
 Florida Inland Navigation District
 1314 Marcinski Road
 Jupiter, FL 33477-9427

Re: Request for Project Agreement Extension – Project # SI-IR-13-01
 Boat Club Island (IR-25) Dock Repair and Reconstruction

Dear Janet:

This letter is to formally request a one-year extension to the “Boat Club Island (IR-25) Dock Repair and Reconstruction” small-scale spoil island restoration and enhancement program grant (SI-IR-13-01). The extension is requested in that installation, final inspection approval and invoicing of all project improvements is not expected to be fully completed by the September 1, 2015 timeframe of the current project agreement.

Project Status and Anticipated Completion Date

The Boat Club Island project consists of removal of a ± 450 square-foot dilapidated (southernmost) dock, repair/reconstruction of a ± 399 square-foot dilapidated (middle) dock, and minor repair to a ± 156 (northern) small dock. The dock removal and repair project is substantially completed pending final inspections and receipt and processing of invoices. Full completion of the project, including processing of invoices and submittal of a reimbursement request to FIND, is anticipated to occur by October 2015.

Thank you and FIND for your assistance on this matter. If you have any questions or require more information, please let me know (772/226- 1258, rdeblois@ircgov.com).

Sincerely,

Roland M. DeBlois, AICP
 Chief, Environmental Planning
 & Code Enforcement Section

Cc: Stan Boling



miamidade.gov

Parks, Recreation and Open Spaces Department

REC'D *ML*

275 N.W. 2nd Street
Miami, Florida 33128
T 305-755-7848

JUL - 9 2015

Florida Inland
Navigation District

July 6, 2015

Ms. Janet Zimmerman
Assistant Executive Director
Florida Inland Navigation District
1314 Marcinski Road
Jupiter, Florida 33477-9427

Re: DA-14-173 Matheson Marina Floating Docks Renovations

Dear Ms. Zimmerman:

When we began preparing the bid documents we realized that the grant budget will not cover the intended scope for all of the eight docks at the marina, so we are requesting a re-scope of the grant to cover two docks (E & F) only. The remaining six docks will be done through another project and grant at a later date. This is the same situation we had on the Crandon Floating Docks grant application of 2015 which was re-scoped during the technical sufficiency period. The budget since it only includes the outside contractor's cost and the permits, should not need to be changed.

We would appreciate your consideration of our request at your earliest convenience. And as always, thank you for your continued support.

Sincerely,

A handwritten signature in blue ink, appearing to read 'Joyce Denny'.

Joyce Denny
Grants Administrator

MAR 31 2014

Florida Inland
Navigation DistrictApplicant: Miami-Dade CountyDepartment: Parks Recreation and Open Spaces DepartmentProject Title: Renovation of Floating Docks at Matheson MarinaProject Director: Armando AmaroTitle Special Projects AdministratorProject Liaison Agent (if different from above): Joyce Denny Liaison Agent Title: Grants SpecialistAddress: 275 N. W. 2nd Street, Miami, FLZip Code: 33128Telephone: 305-755-7878

Fax

Email: jdenny@miamidade.gov

***** I hereby certify that the information provided in this application is true and accurate.*****

SIGNATURE: DATE: 3/26/14

Michael Spring, Senior Advisor, Office of the Mayor

PROJECT SUMMARY NARRATIVE (Please summarize the project in 2 paragraphs or less.)

This project replaces 2,274 rusted, ten foot long tie rods and bolts that connect the fenders to the docks on six of the eight floating docks at Matheson Marina. These docks which are always 100% subscribed, currently with 260 boaters on a waiting list, were rebuilt after Hurricane Andrew in 1992, suffered through Hurricanes Katrina and Wilma in 2005. The 2 ½ inch thick floating docks are comprised of concrete slabs, sandwiched on both sides by four inch wood sections and flexible fenders secured by 10 foot long rods and bolts running through them. The tie rods are located at eight inches on center. The docks float on large plastic tubs filled with Styrofoam. The flotation devices are deeper than they are wide and tend to make the finger piers list unless tightly secured by tie rods and stabilized by pile guides that have brackets wrapped around the 24 x 24 inch concrete piles. The rods and bolts in the existing docks have rusted through, thus can no longer be tightened. The replacement rods and bolts will be galvanized steel. The flotation devices remain sound. The wood borders will be treated to extend their useful life. The concrete dock surfaces and the concrete piles have an expected remaining life of more than 25 years.

Form No. 90-22

Rule 66B-2, (New 12/17/90, Rev.07-30-02, 04-24-06)

Agenda P1

Original Project Scope

WAP-05-3.12



Project #	1000000000
Date	1/26/09
Drawn by	T. McDonald
Checked by	
Reviewed by	
Drawn by	
Checked by	
Reviewed by	

Project Title:	MATHESON HAMMOCK PARK
Drawing Title:	MARINA AREA

SITE MAP

Revisions	
N°	Date

Design:	M. MACDONALD
Drawn:	B. COHON
Checked:	
Survey:	
Inspection:	
Project Manager:	

Approvals	Date



MATHESON MARINA TIE RODS RE-SCOPE

DOCK E	Descrip of Items	Sizes	Quantity	Cost	FIND	Miami Dade
	Provide floating turbidity barrier			\$ 1,500.00		
	Remove existing rods			\$ 43,000.00		
	Tie Rods/nuts & washers	5.5' Long	500	\$ 75,906.00		
	Tie Rods/nuts & washers	10-4 1/2 Long	216	\$ 55,863.00		
	Replace plates, frames, side and end pile guides, and roller assemblies	various		\$ 52,020.00		
	wood treatment on fendering			\$ 1,065.00		
			Total	\$234,472.00	\$117,236.00	\$ 117,236.00
DOCK F	Provide floating turbidity barrier			\$ 1,500.00		
	remove existing rods			\$ 47,160.00		
	Tie Rods/nuts & washers	5.5' Long	570	\$ 86,533.00		
	Tie Rods/nuts & washers	10-4 1/2 Long	216	\$ 55,863.00		
	Replace plates, frames, side and end pile guides, and roller assemblies			\$ 56,445.00		
	wood treatment on fendering			\$ 1,230.00		
			Total	\$244,043.00	\$122,021.50	\$ 122,021.50

Grant Total \$478,515.00 \$239,257.50 \$ 239,257.50

NOTES:

- 1 All docks are floating docks
- 2 The rescope is to have the grant project include only Docks E & E rather than all docks as originally planned
- 3 Original estimate was incomplete
- 4 Remaining docks will be subject of 2016 grant application

ALCALDE & FAY

GOVERNMENT & PUBLIC AFFAIRS CONSULTANTS

August 31, 2015

MEMORANDUM

TO: Mark Crosley, Executive Director
Janet Zimmerman, Assistant Executive Director

FROM: Jim Davenport

SUBJECT: Federal Legislative Report

FISCAL YEAR 2016 APPROPRIATIONS

Congress returns to Washington on September 8th, with much left to accomplish, including fiscal year (FY) 2016 appropriations legislation. Congress will need to make some difficult budget decisions since the President has threatened to veto appropriations legislation and Congressional Democrats are not supporting appropriations legislation. Please see our last report for additional details since the situation has not changed since then.

ASSESSMENT OF THE INTRACOASTAL WATERWAY

Since our last report, additional members have agreed to support the Representative Lois Frankel (D-FL) and David Rouzer (R-NC) letter to the Army Corps of Engineers requesting that the Corps carry out the assessment of the Atlantic Intracoastal Waterway and Gulf Intracoastal Waterway that was authorized in the 2014 Water Resources Reform and Development Act (WRRDA). In addition to Reps. Frankel and Rouzer, the following are signing onto the letter: Reps. John Mica (R-FL), Curt Clawson (R-FL), Patrick Murphy (D-FL), Alcee Hastings (D-FL), Ted Deutch (D-FL), Debbie Wasserman Schultz (D-FL), Walter Jones (R-NC), Tom Rice (R-SC), and Early Carter (R-GA). We will continue to keep you apprised of this effort.

COMPENSATORY MITIGATION LANGUAGE

Recently, we met with the House Water Resources Subcommittee Staff Director to discuss our proposed language addressing compensatory mitigation. The staff is in the initial stages of preparing a 2016 Water Resources Development Act, which authorizes projects and policy for the Corps of Engineers. The staff director fully understood the issue and said he would look over our language. We also informed Representative

Frankel's staff of the meeting and will work with them to look at the WRDA bill as a potential vehicle for our language.