

**Board of
Commissioners Meeting
September 13, 2014**

PRELIMINARY AGENDA

FLORIDA INLAND NAVIGATION DISTRICT Board of Commissioners Meeting

9:00 a.m., Saturday, September 13, 2014

**Jupiter Beach Resort
5 North Highway A1A,
Jupiter, (Palm Beach County), FL, 33477-5145**

Item 1. Call to Order.

Vice-Chair Blow will call the meeting to order.

Item 2. Pledge of Allegiance.

Commissioner Isiminger will lead the Pledge of Allegiance to the United States of America.

Item 3. Roll Call.

Secretary Netts will call the roll.

Item 4. Consent Agenda.

There are no consent agenda items for this meeting.

Item 5. Additions or Deletions.

Any additions or deletions to the meeting agenda will be announced.

RECOMMEND: Approval of a final agenda.

Item 6. Board Meeting Minutes.

The minutes of the August meeting will be presented for review and approval at the Commissioner's October Board meeting.

Item 7. Public Comments.

The public is invited to provide comments on issues that are NOT on today's agenda. All comments regarding a specific agenda item will be considered following Board discussion of that agenda item. *Please note: Individuals who have comments concerning a specific agenda item should fill out a speaker card and communicate with staff prior to that agenda item.*

Item 8. Comments from the U.S. Army Corps of Engineers.

Representatives from the U.S. Army Corps of Engineers (USACE) will present an update on Intracoastal Waterway (ICW) projects, the USACE's ICW setback criteria, and the USACE's effort to digitize ICW real estate maps to facilitate real estate interpretation and interests.

(Please see back up pages 6 - 9)

Item 9. Staff Report on Palm Beach County Area Projects.

Staff will present a report on the District's Palm Beach County area projects.

(Please see back up pages 10 - 37)

Item 10. Scope of Services and Fee Quote for Professional Engineering Services to Update the St. Johns County and Flagler County Dredge Material Plans (DMMP), St. Johns and Flagler Counties, FL.

The District has begun the necessary updates to our Long-Range Dredge Material Management Plans. Many of these plans are over 20 years old and site conditions, permitting changes, operational concerns and the need to have the plans summarized and produced in a consumer-friendly format support the forthcoming updates. At our April 2013 Board meeting, the Board approved a fee quote and scope from Taylor Engineering to update the Nassau County and Duval County plans.

Taylor Engineering has submitted a scope of work and fee quote to update both the St. Johns County and the Flagler County DMMP's. These plans originate from 1989 and 1993, respectively. The update to these plans will facilitate better facility construction and operations, and along with the recently completed hydrographic survey data, this information will provide the basis for our successful operations within each county.

(Please see back up pages 38 - 42)

RECOMMEND: Approval of a scope of work and fee quote in the amount of \$132,490.00 from Taylor Engineering for updates to the St. Johns County and Flagler County Dredge Material Management Plans, St Johns & Flagler County, FL.

Item 11. **Assistance Projects Extension Requests.**

Several additional Project Sponsors have requested extensions of their FY 2012-13 project agreements. By law and District program rules, these agreements can be extended for one additional year (Revised expiration date: September 30, 2015).

(Please see back up pages 43 - 55)

RECOMMEND Approval of the requested project agreement extensions for one additional year.

Item 12. **Scope of Services and Cost Proposal for Permitting and Final Engineering Design for Dredge Material Management Area (DMMA) DU-9, Duval County, FL.**

In 2000, the Navigation District (District) obtained a permit to construct Dredge Material Management Area (DMMA) DU-9 in Duval County. Initial work on the site uncovered soil and ground water contamination and work was halted. In 2004, the District pursued the construction of that portion of the site not affected by contamination to facilitate a necessary forthcoming dredging project.

As the responsible party, the previous property owner worked with FDEP to satisfy a consent order to mitigate the contamination and monitor the site. After 14 years, and seeking to resolve this issue, the previous property owner has received a conditional closure letter from FDEP requiring “institutional controls on the property”.

The previous land owner would like the District’s concurrence of the conditional closure conditions. Staff has conferred with our attorney and our District Engineer and has concluded that it is in the best interest of the District to move forward with his issue and pursue the full permit for this site at this time. In addition, staff will work with our attorney and the previous land owner to establish an agreement limiting the Navigation District’s long-term liability for contamination at this site, and establish conditions should the future use of the site be restricted or incur additional costs to the District.

By obtaining the permit, the Navigation District will ensure the first step in this process and determine what, if any, site limitations and controls will be imposed for the construction and utilization of this site.

(Please see back up pages 56 - 73)

RECOMMEND: Approval of a scope of work and cost proposal in the amount of \$135,649.42 from Taylor Engineering for the permitting and final design of DMMA DU-9, Duval County.

Item 13. **Small-Scale Spoil Island Restoration and Enhancement Program Project, Spoil Island "C", ADA Pathway, City of Miami, Miami-Dade County, FL.**

The City of Miami has submitted an application for Small-Scale Spoil Island Restoration and Enhancement Program funding for the recreational enhancements of spoil island "C" within Miami-Dade County. The project will construct an ADA compliant path from the floating docks to the existing tiki shelter. The project is in compliance with the District's rules for the program.

(Please see back up pages 74 - 78)

RECOMMEND Approval of assistance funding in the amount of \$7,500.00 for the City of Miami Spoil Island "C", ADA Pathway Small-Scale Spoil Island Restoration and Enhancement Program project.

Item 14. **Small-Scale Spoil Island Restoration and Enhancement Program Project, Spoil Island "C", Swimming Area and Pathway, City of Miami, Miami-Dade County, FL.**

The City of Miami has submitted an application for Small-Scale Spoil Island Restoration and Enhancement Program funding for the recreational enhancements of spoil island "C" within Miami-Dade County. The project will construct a new designated swimming area and path for access. The project is in compliance with the District's rules for the program.

(Please see back up pages 79 - 84)

RECOMMEND Approval of assistance funding in the amount of \$7,500.00 for the City of Miami Spoil Island C swim area and pathway Small-Scale Spoil Island Restoration and Enhancement Program project.

Item 15. **Finance and Budget Committee Report.**

The District's Finance and Budget Committee met prior to the Board meeting and will provide their recommendations concerning items on the Committee's agenda.

(Please see Finance and Budget Committee Agenda Package)

RECOMMEND: Approval of the recommendations of the District's Finance and Budget Committee.

Item 16. **Washington Report.**

The District's Washington DC government relations firm has submitted a status report on their activities on the District's federal issues.

(Please see back up pages 85 - 86)

Item 17. Additional Staff Comments and Additional Agenda Items.

Item 18. Additional Commissioners Comments.

Item 19. Adjournment.

If a person decides to appeal any decision made by the board, agency, or commission with respect to any matter considered at such meeting or hearing, he or she will need a record of the proceedings, and that, for such purpose, he or she may need to ensure that a verbatim record of the proceedings is made, which record includes the testimony and evidence upon which the appeal is to be based.



**US Army Corps
of Engineers ®**
Jacksonville District

IWW STATUS UPDATE
FIND Board of Commissioners Meeting
September 13, 2014



WORK ACTIVITIES IN FY 14:

1. IWW: Indian River Reach 1(Indian River County)
2. DMMA O-7 and DMMA O-23
3. MISC.



**US Army Corps
of Engineers**
Jacksonville District

IWW STATUS UPDATE FIND Board of Commissioners Meeting September 13, 2014



AIWW = Atlantic Intracoastal Waterway Norfolk to St. Johns
IWW = Intracoastal Waterway Jacksonville to Miami (12' and 10' projects)
DMMA = Dredge Material Management Area

1. WORK ACTIVITY: IWW Indian River Reach 1 (Indian River County)

CONTRACT AMOUNT: TBD

DESCRIPTION OF WORK: Development of plans and specifications for the IWW Indian River Reach 1 and procurement of the O&M dredging contract. Material from this reach is non beach quality and will be placed upland in the newly constructed DMMA IR-2. Preliminary estimates for shoaling quantities include 300,000 cy of material within Reach 1.

SCHEDULE (Tentative):

| | |
|-----------------------------------|---------------|
| Submit Exemption Letters to FDEP: | 26 Nov 2013A |
| Contract Advertisement Initiated: | 31 July 2014A |
| Bid Opening: | 3 Sept 2014A |
| Contract Award: | 30 Sep 2014 |
| NTP Issued: | 30 Oct 2014 |
| Mobilization Complete: | 27 Nov 2014 |
| Dredging Complete: | 30 May 2014 |

FIND WORK ORDER: Work order for developing plans and specifications for Indian River Reach 1 was approved at the May 2013 FIND Board Meeting. Wire transfer of funds was completed 25 June 2013.

An additional work order was approved at the May FIND Board meeting in the amount of \$2,500,000 to fund the dredging contract. In addition to the \$2,500,000 in FIND contributed funds for the O&M dredging contract, \$1,000,000 in Federal funds will also be utilized for the contract. A second work order for O&M dredging was presented at the July Board meeting which requested an additional \$1,800,000 in Contributed Funds from FIND.

NAME OF CONTRACTOR: TBD

STATUS: Dredging contract was advertised on 31 July 2014. The small business Multi Award Task Order Contract (MATOC) will be utilized for this contract action. Bids are due on 3 September 2014 and an update will be provided at the 13 September 2014 Board meeting. Award of the contract will occur NLT 30 September 2014.



US Army Corps
of Engineers®
Jacksonville District

IWW STATUS UPDATE
FIND Board of Commissioners Meeting
September 13, 2014



2. WORK ACTIVITY: DMMA O-7 / DMMA O-23

CONTRACT AMOUNT: TBD

DESCRIPTION OF WORK: Finalization of plans and specifications and associated environmental coordination for DMMA O-7 and development of plans and specifications, permit and environmental coordination for DMMA O-23.

SCHEDULE: TBD

FIND WORK ORDER: N/A

NAME OF CONTRACTOR: TBD

STATUS: Through coordination with FIND Staff it has been requested that the Corps undertake completion of plans and specifications for DMMA O-7. A coordination meeting was held with Taylor Engineering on 12 June 2014 to review the status of the plans and specifications for O-7 and to also discuss further environmental coordination that is needed. In addition, the Corps will undertake development of plans and specifications for DMMA O-23 as well. Anticipate beginning these two efforts in FY15 and funding with Federal funding on hand.

Since both of these DMMA's could feasibly be used for either maintenance dredging of the IWW or OWW it has been determined that the existing contributed funds agreement with FIND can be the mechanism by which the Corps receives funding.



**US Army Corps
of Engineers**
Jacksonville District

IWW STATUS UPDATE FIND Board of Commissioners Meeting September 13, 2014



3. MISC.

a. Development of Plans and Specifications for Broward Reach 1: Corps would like to move forward with initiation of plans and specifications for this reach, with 100% Federal funding. Hydro survey was performed by Morgan and Ecklund and provided to the Corps on 26 June 2014. There is approximately 50k cy of material located within the federal channel down to 10' and 80k cy down to 10'+2'. Given the small quantity, the most cost effective way to pursue the dredging would be utilization of a Corps of Engineers dredge, either the Currituck or Murden.

The nearest approved nearshore or offshore disposal is located at Port Everglades (offshore). In order to utilize this offshore disposal option we would need to obtain an FDEP permit and perform the required NEPA documentation. From an FDEP standpoint, it may be applicable to add the IWW reach to the description of the existing Port Everglades permit. The Corps will move out on this action asap.

b. Utilization of nearshore disposal options: The Corps is currently putting together a map which shows available nearshore disposal areas that could be utilized for IWW dredging. After the data is gathered, Corps staff will be going to Tallahassee to discuss with FDEP the need for flexible utilization of nearshore disposal areas. The Corps is trying to establish more flexibility and will discuss with FDEP the possibility of a dredge specific WQC permit.

Preliminary investigations show nearshore and offshore disposal options available; however, adequate NEPA and FDEP permits may or may not be available for specific actions related to IWW dredging.

c. Briefing from the Corps Regulatory Division and Project Management regarding updated setback criteria being utilized for review of permit requests along the IWW.



PALM BEACH COUNTY PROJECT STATUS UPDATE

September 2014

Dredged Material Management Plan.

Phase I of the Dredged Material Management Plan (DMMP) for the Intracoastal Waterway in Palm Beach County was completed in 1989. Phase II of the DMMP was completed in 1990 and all major land acquisition was completed in 1991. (Please see the attached maps).

The 50-year dredging projection for the 43 miles of channel in Palm Beach County is 2.9 million cu/yds and the storage projection is approximately 5.5 million yds³. The majority of this dredging (76%) is associated with Jupiter Inlet.

Dredged Material Management Area Development and Dredging

Six upland Dredged Material Management Areas (DMMA) have been acquired and two beach placement areas have been secured to manage dredged materials from the Intracoastal Waterway. Peanut Island and MSA 641A DMMA's have been constructed. Easements have recently been re-secured for beach placement of IWW material on the beach south of Jupiter Inlet (PB-JB).

In 2013, the USACE completed a maintenance dredging project for Cuts P1 through P-4 on the Intracoastal Waterway in the vicinity of Jupiter Inlet. This 30,000 yds³ project was funded through supplemental Operations & Maintenance funding via Hurricane Sandy relief. This area was previously dredged in 2009 and is regularly dredged about every 3 years.

A small but navigation-limiting shoal in the vicinity of the Parker Bridge in Palm Beach Dredging Reach II was removed in September of 2013. The dredged material (approximately 5,000 yds³) was placed on MSA 617C and hauled away by the contractor.

The deepening of a portion of Reach III north of the Port of Palm Beach is completing the permitting phase and is scheduled to be dredged next year pending receipt of final permits and development of final plans and specifications. This item is budgeted.

Maintenance dredging of Reach IV is in the planning phase.

Waterways Economic Study

The Palm Beach County Waterways Economic Study was completed in 1998 and updated in 2007 and 2011. The recent study documented up to 831 recreational waterway related businesses in the county employing 5,879 people, with salaries of \$297.5 million and a total economic impact of \$1.26 billion. Property values were determined to be increased by \$2 billion by the presence of the ICW channel. There are approximately 33,128 registered vessels in the county.

FIND



PALM BEACH COUNTY PROJECT STATUS UPDATE

September 2014

Waterways Assistance Program

Since 1986, the District has provided \$42 million in Waterways Assistance Program funding to 172 projects in the County having a total constructed value of approximately \$129 million. The County, fifteen waterfront cities, and the Port of Palm Beach have all participated in the program. (Please see the attached listing).

Notable projects funded include: Peanut Island Park, construction or rehabilitation of most of the area's saltwater boat ramps, South Cove, Riviera Beach Marina, Jupiter Riverwalk, Belle Glade Waterfront, Lake Park Marina, Bryant Park, Delray Intracoastal Park, and the West Palm Beach Waterfront Renovations.

An additional eight applications are currently being considered for funding assistance for FY 2014-15.

Cooperative Assistance Program

The District's Cooperative Assistance Program has provided funding assistance for the following projects with elements in Palm Beach County: Florida Marine Patrol Officer Funding; Clean Marina Program; Clean Vessel Act; Ocean Avenue bridge replacement; Manatee Acoustic Warning System, and Shoreline Stabilization and Boat lift at the FWC Office. The District's funding assistance for the Palm Beach County portion of these projects was approximately \$2.6 million.

Interlocal Agreement Program

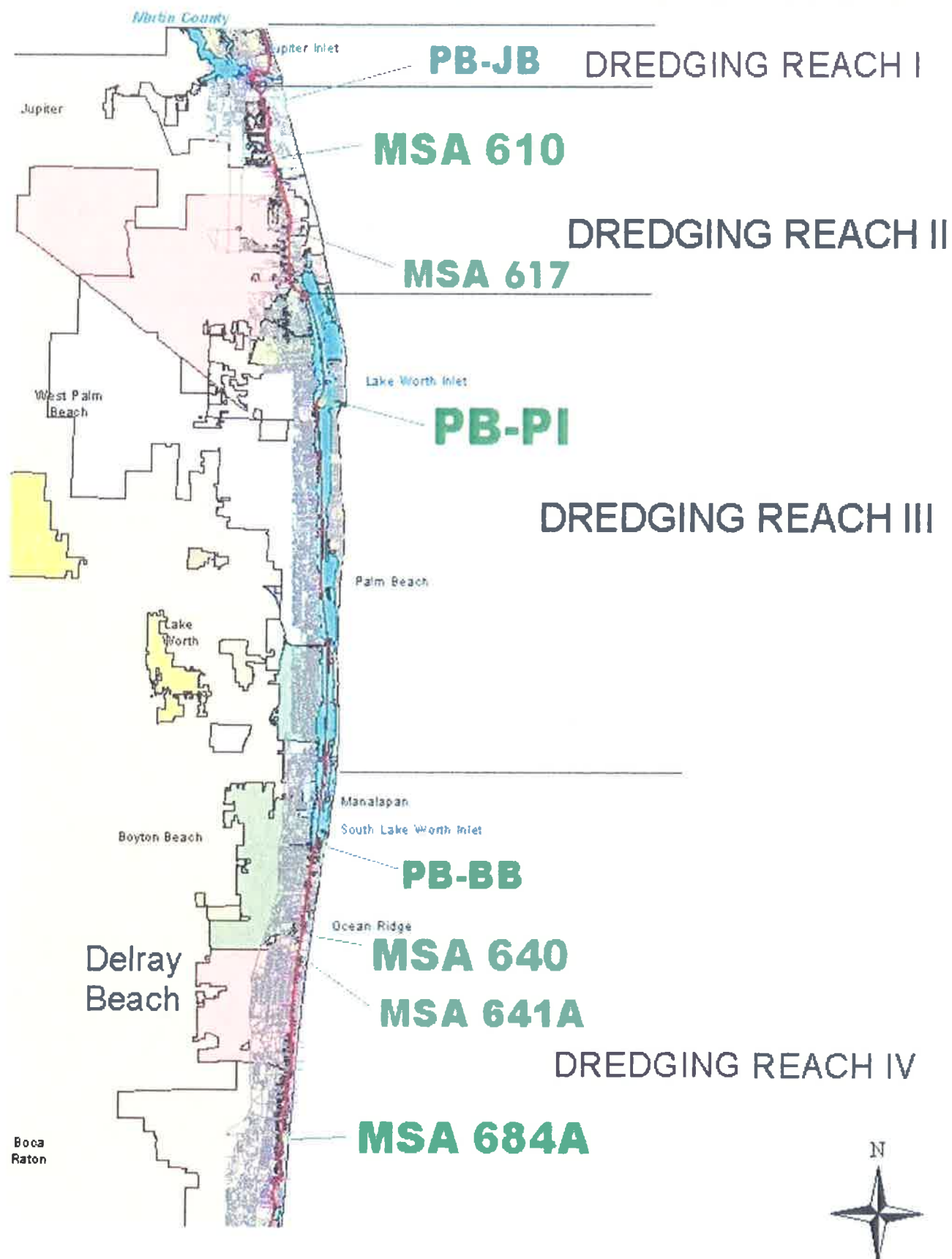
The District's Interlocal Agreement Program (a sub-set of the WAP and CAP programs) has provided funding assistance for the following projects with elements in Palm Beach County: Clean Marina Program; Clean Vessel Act, Dredging of ICW Cut P-50, and the MSA 614B Mitigation/Enhancement Project. The District's funding assistance for the Palm Beach County portion of these projects was approximately \$565,000.

Public Information Program

The District currently prints and distributes the following brochures with specific information about Palm Beach County Waterways: the Economic Impact of Palm Beach County Waterways, Palm Beach County Boating Safety and Manatee Protection Zone Brochure, Movable Bridge Guide, and the ICW Channel Conditions Brochure.

FIND

PALM BEACH COUNTY ICW DREDGING REACHES AND DREDGED MATERIAL MANAGEMENT AREAS





FIND Owned
Channel
ICW Right-of-Way

DMMA PB-JIB








Google

Image © 2014 TerraMetrics
© 2014 Google
Data SIO, NOAA, U.S. Navy, NGA, GEBCO

Imagery Date: 1/18/2014 26°56'07.78" N 80°04'10.60" W elev 18 ft eye alt

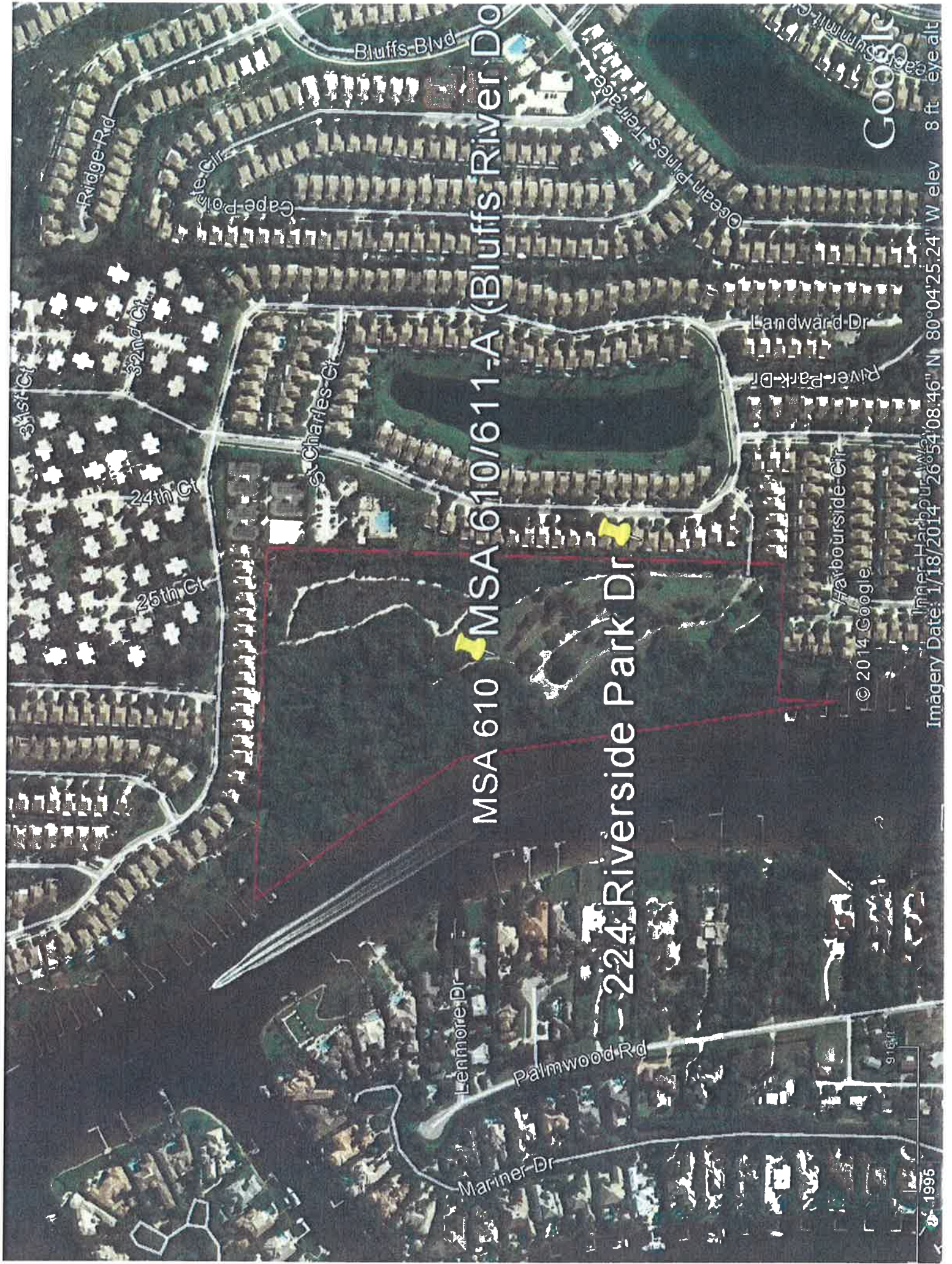
1995



 FIND Owned
 Channel
 ICW Right-of-Way

MSA 610/611





31st Ct

Ridge Rd

32nd Ct

24th Ct

25th Ct

S Charles Ct

Bluffs Blvd

Cape Pkwy

Ocean Pines Terraces

Landward Dr

River Park Dr

Havbourside Cir

Lenmore Dr

Palmwood Rd

Mariner Dr

MSA 610 MSA 610/611-A (Bluffs River Do

224 Riverside Park Dr

Google

© 2014 Google

Imagery Date: 1/18/2014 26°54'08.46" N 80°04'25.24" W elev 8 ft eye alt

1996



FIND Owned
Channel
ICW Right-of-Way

MSA 617C





Rolling Green Rd

Grafton Rd

Ellison-Wilson Rd

Ascott Rd



MSA FO-617C
MSA 617C

© 2014 Google

1995

Imagery Date: 1/18/2014 26°52'04.22" N 80°03'48.10" W elev 9.9 ft eye alt



 FIND Owned
Channel
 ICW Right-of-Way

DMMA PB-PI



PB-FDMA PB-PI (Peanut Island)

© 2014 Google

Google

Imagery Date: 1/18/2014 26°46'23.15" N 80°02'45.20" W elev. 28 ft eye alt

767 ft

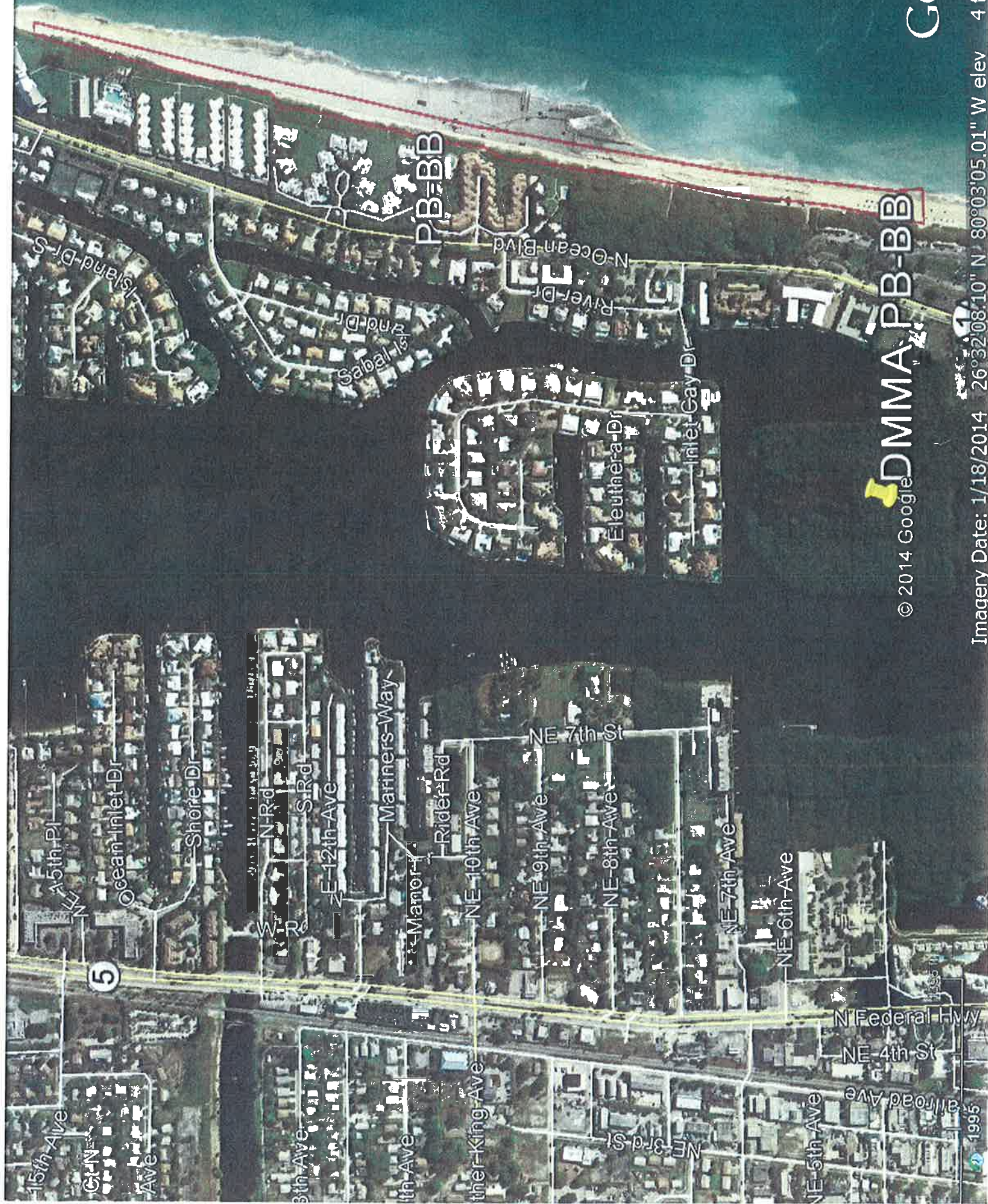
1995



FIND Owned
Channel
ICW Right-of-Way

DMMA PB-BB





© 2014 Google DMMA PB-BB

Google

Imagery Date: 1/18/2014 26°32'08.10" N 80°03'05.01" W elev 4 ft eye alt



Find eas
FIND Owned
Channel
ICW Right-of-Way

MSA 640/640A

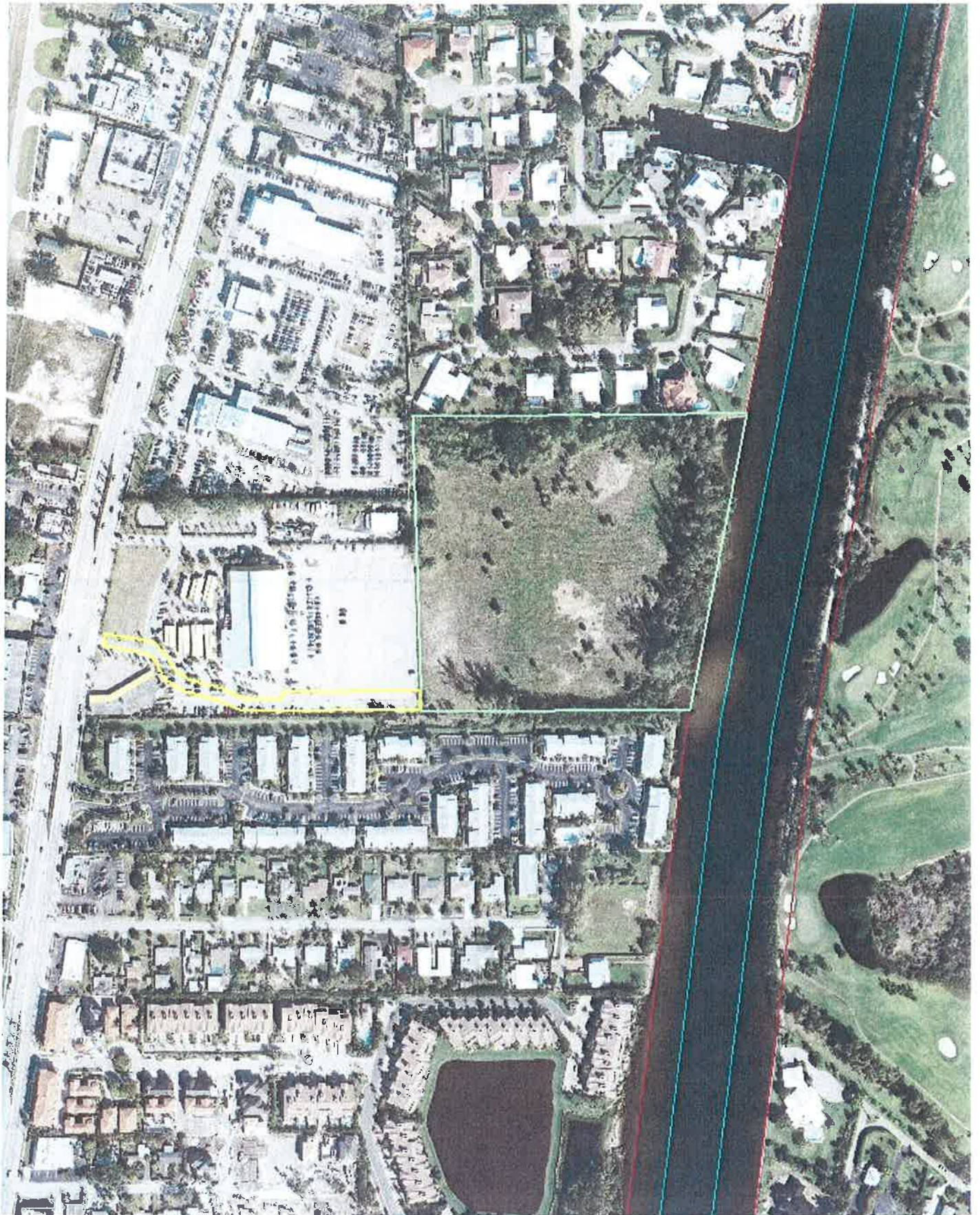




© 2014 Google

Imagery Date: 1/18/2014 26°29'32.01"N 80°03'40.31"W elev 5 ft eye alt

1995



-  Findeas
-  FIND Owned
-  Channel
-  ICW Right-of-Way

MSA 641/641A





MSA 641/641A

Kokomo-Key-Ln

© 2014 Google

Google

Imagery Date: 1/18/2014 26°29'05.07" N 80°03'46.58" W elev 8 ft eye alt

1995



-  Findeas
-  FIND Owned
-  Channel
-  ICW Right-of-Way

MSA 684A



th-Rd

NE Spanish River Blvd

800

MSA 684 MSA 684A

17

N Ocean Blvd

E 35th St

© 2014 Google

Google

1995

Imagery Date: 1/18/2014 26°23'02.50" N 80°04'09.29" W elev 9 ft eye alt

ECONOMIC BENEFITS OF THE DISTRICT'S WATERWAYS

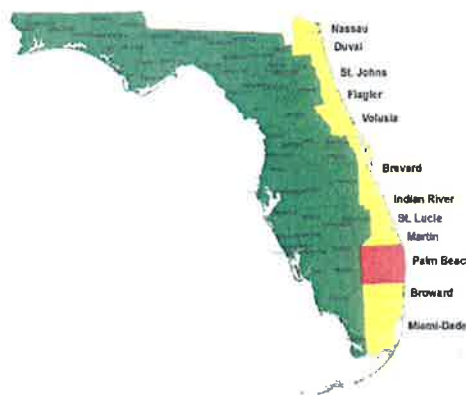


Purpose

To update economic benefits in Palm Beach County of marine-related activities on the District Waterways, as previously estimated in *An Economic Analysis of the District's Waterways in Palm Beach County*, December 2006, and to provide the general public and Federal, State, and local officials with a clear understanding of the importance of maintaining the waterways.

Scenarios Evaluated

1. Current Existing Conditions
2. Cessation of Waterways Maintenance
3. Increase in Waterways Maintenance
4. Estimated impact of the 2007-2009 U.S. economic recession



ECONOMIC IMPACTS

Current Existing Impacts

- \$1.26 billion in business volume
- \$297.5 million in personal income
- 5,879 jobs
- \$53.3 million in tax revenue

Impacts of Cessation of Waterways Maintenance

- Decrease of \$537.3 million in business volume
- Decrease of \$126.3 million in personal income
- Decrease of 2,640 jobs
- Decrease of \$22.2 million in tax revenue

Impacts of an Increase in Waterways Maintenance

- Increase of \$147.4 million in business volume
- Increase of \$33.0 million in personal income
- Increase of 686 jobs
- Increase of \$5.7 million in tax revenue

Impact of the 2007-2009 U.S. Economic Recession

- Decrease of \$779.97 million in business volume
- Decrease of \$182.0 million in personal income
- Decrease of 3,789 jobs
- Decrease of \$31.7 million in tax revenue

Economic Benefits as of April 2011

PALM BEACH COUNTY



ECONOMIC BENEFITS OF THE DISTRICT'S WATERWAYS

PALM BEACH COUNTY

The Intracoastal Waterway

The Atlantic Intracoastal Waterway (AICW) is a 1,391-mile channel between Trenton, New Jersey, and Miami, Florida. The Waterway along Florida's eastern seaboard is 406 miles long and follows coastal rivers and lagoons past numerous tourism-oriented communities. The channel is authorized to a depth of 12 feet from Nassau County to Fort Pierce, and a 10 foot depth south through Miami-Dade County. Boating activities on the waterways contribute to the existence of numerous marine-related businesses such as marinas and boatyards and have stimulated development of residential properties on the Waterways.

The Navigation District

The Florida Inland Navigation District, created in 1927, is the local sponsor for the AICW in Florida. In cooperation with the Jacksonville District of the U.S. Army Corps of Engineers, the Navigation District is responsible for maintenance of the AICW in Florida. To maintain navigation, the waterways need to be periodically dredged due to shoaling from currents, upland soil erosion, and the movement of offshore sands through the ocean inlets. Maintenance dredging is projected to cost approximately \$12 to \$16 million annually during the next 50 years, of which 50 percent of the costs are expected to be borne by property owners within the Navigation District's jurisdiction.

The Navigation District also partners with other governments to provide waterway access and improvement facilities for our mutual constituents. These projects include public boat ramps, marinas, side channels, parks, fishing piers, boardwalks, navigation aids, derelict vessel removal, shoreline stabilization, and waterway cleanups.

Source of Data Used in This Analysis

The economic benefits of the Waterways were estimated in December 2006 in *An Economic Analysis of the District's Waterways in Palm Beach County*.

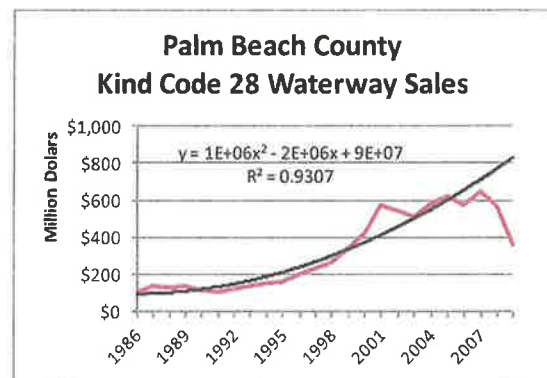
Updating of Previously Estimated Benefits

The benefits presented in this analysis were estimated by updating the direct marine-business

impacts in the original analysis to current values using the change in gross sales reported by boat dealers to the Florida Department of Revenue (FDOR). The updated direct impacts were used in conjunction with an IMPLAN input/output model to estimate total economic benefits.

Estimating the Impact of the Recession

The impact of the recession was estimated by determining the trend in gross sales of boat dealers over the 20-year period prior to the onset of the recession. This trend was used to estimate the theoretical gross sales if sales had continued to increase at the rates previously experienced. The red line in the figure below illustrates reported actual gross sales of boat dealers and the black line illustrates the trend of those sales. From 2007 to 2009 gross boat dealer sales in Palm Beach County decreased by 45 percent; if the recession had not occurred, it is estimated that gross sales from 2007 to 2009 would have decreased by only four percent.

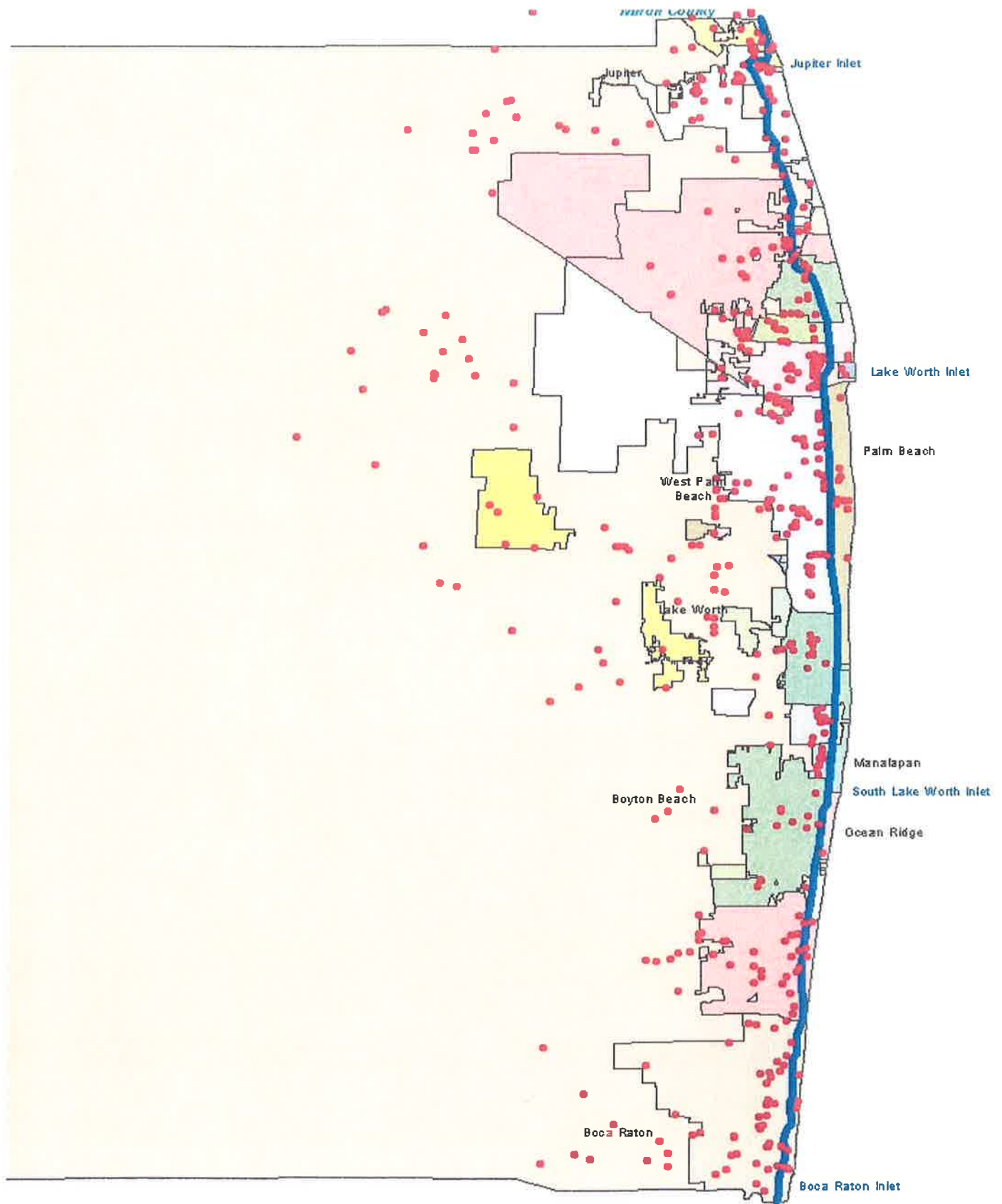


Annual Boater Spending on Gas, Food, and Drinks at Non-Marine-Related Establishments

- Current existing conditions: \$36.4 million
- Cessation of maintenance: \$22.5 million
- Increased maintenance: \$36.4 million
- Assuming no recession: \$48.5 million

Vessel Draft Restrictions Assumed for Each Scenario

- Current existing conditions: 6.5 feet MLW
- Cessation of maintenance: 3 feet MLW
- Increased maintenance: 10 feet MLW
- Assuming no recession: 6.5 feet MLW



LOCATION MAP

Palm Beach County Waterway Related Businesses

**FLORIDA INLAND NAVIGATION DISTRICT
WATERWAYS ASSISTANCE PROGRAM PROJECTS
IN PALM BEACH COUNTY - 1986-2013**

| Project Name | Project Number | Project Sponsor | Grant Amount | Total Cost |
|---|-----------------------|----------------------------|---------------------|-------------------|
| Peanut Island Development - Phase I V | PB-00-90 | Palm Beach County | \$525,000 | \$6,344,431 |
| Phil Foster Park - Phase I | PB-01-94 | Palm Beach County | \$100,000 | \$200,000 |
| Ship For Kids | PB-01-95 | Palm Beach County | \$75,000 | \$150,000 |
| Lake Worth Wetlands Restoration Project | PB-02-101 | Palm Beach County | \$400,000 | \$13,968,377 |
| Lake Worth Lagoon Artificial Reef At Kelsey Park | PB-03-107 | Palm Beach County | \$100,000 | \$200,000 |
| Phil Foster Park Development - Phase I I I | PB-03-108 | Palm Beach County | \$720,000 | \$1,440,000 |
| Burt Reynolds Park Development - Phase A | PB-04-110 | Palm Beach County | \$400,000 | \$1,000,000 |
| Du Bois Park - Phase I | PB-05-114 | Palm Beach County | \$61,854 | \$250,000 |
| Burt Reynolds Park - Phase I I | PB-06-121 | Palm Beach County | \$806,750 | \$2,413,500 |
| Light Harbor Boat Ramp (F.K.A. Moroso Whtwy Park) | PB-07-126 | Palm Beach County | \$987,000 | \$2,476,321 |
| S. Lake Worth Inlet Sand Trap & Boat Channel Dredging | PB-07-127 | Palm Beach County | \$233,220 | \$897,000 |
| John's Island Oyster Reef Project | PB-08-132 | Palm Beach County | \$200,000 | \$680,000 |
| Snook Islands Public Use Facilities | PB-08-133 | Palm Beach County | \$639,575 | \$1,279,150 |
| Dubois Park Marina & Shoreline Stabilization | PB-09-140 | Palm Beach County | \$987,000 | \$2,587,975 |
| Burt Reynolds Park Staging Dock Extension | PB-10-146 | Palm Beach County | \$75,000 | \$150,000 |
| Jupiter Ridge Shoreline Restoration Project | PB-10-147 | Palm Beach County | \$500,000 | \$1,479,718 |
| South Cove Restoration And Boardwalk | PB-10-148 | Palm Beach County | \$1,000,000 | \$4,388,000 |
| Waterway Park Design & Permitting - Phase I | PB-10-149 | Palm Beach County | \$90,000 | \$428,711 |
| Bert Winters Boat Ramp - Phase I | PB-11-152 | Palm Beach County | \$255,000 | \$180,000 |
| Bryant Park Wetland Restoration & Boat Ramp Facility | PB-11-153 | Palm Beach County | \$406,250 | \$625,000 |
| John's Island Oyster Reef Project - Phase B | PB-11-154 | Palm Beach County | \$372,868 | \$812,500 |
| Lake Wyman Restoration Project | PB-11-155 | Palm Beach County | \$50,000 | \$745,736 |
| Burt Reynolds Park - West Side Design - Phase I | PB-12-162 | Palm Beach County | \$794,030 | \$100,000 |
| Fullerton Island Restoration Project | PB-12-163 | Palm Beach County | \$250,000 | \$2,532,710 |
| Bert Winters Park Acquisition | PB-13-169 | Palm Beach County | \$258,037 | \$1,000,000 |
| Highland Beach Mangroves Shoreline Restoration | PB-13-170 | Palm Beach County | \$280,725 | \$516,075 |
| Juno Dunes Shoreline Restoration | PB-13-171 | Palm Beach County | \$75,000 | \$561,450 |
| Ocean Inlet Design and Permitting | PB-13-172 | Palm Beach County | \$280,725 | \$150,000 |
| Waterway Park Development | PB-13-173 | Palm Beach County | \$1,420,396 | \$2,840,792 |
| Bert Winters Boat Ramp | PB-89-5 | Palm Beach County | \$71,500 | \$143,000 |
| Dubois Park Restoration - Phase I | PB-90-7 | Palm Beach County | \$15,000 | \$30,000 |
| Juno Park Improvements | PB-90-8 | Palm Beach County | \$12,500 | \$25,000 |
| Ocean Inlet Marina Channel Dredging & Daymarking | PB-91-12 | Palm Beach County | \$60,000 | \$66,975 |
| Munyon Island Restoration - Phase I | PB-91-13 | Palm Beach County | \$100,000 | \$202,000 |
| Juno Beach Boat Ramp Improvement | PB-92-18 | Palm Beach County | \$60,354 | \$120,708 |
| Burt Reynolds Park Boat Ramp Design | PB-92-19 | Palm Beach County | \$15,000 | \$30,000 |
| Munyon Island Restoration - Phase I I | PB-92-20 | Palm Beach County | \$211,000 | \$442,000 |
| Surveys For Munyon Island Restoration | PB-93-26 | PBC Borad of Commissioners | \$21,704 | \$43,408 |
| Burt Reynolds Park Boat Ramp & Parking | PB-93-28 | PBC Borad of Commissioners | \$116,500 | \$400,000 |
| Dubois Park Marina Shoreline Stabilization - Phase I | PB-93-29 | Palm Beach County | \$96,687 | \$222,380 |

**FLORIDA INLAND NAVIGATION DISTRICT
WATERWAYS ASSISTANCE PROGRAM PROJECTS
IN PALM BEACH COUNTY - 1986-2013**

| Project Name | Project Number | Project Sponsor | Grant Amount | Total Cost |
|---|-----------------------|-----------------------------|---------------------|-------------------|
| Burt Reynolds Park Boat Ramp Construction & Improvement | PB-94-33 | PBC Board of Commissioners | \$135,234 | \$270,468 |
| Munyon Island Wetland Restoration - Phase I I | PB-94-34 | PBC Board of Commissioners | \$223,500 | \$1,170,083 |
| Inshore Artificial Reef Project | PB-95-37 | Palm Beach County | \$73,687 | \$147,374 |
| Peanut Island Development - Phase I | PB-95-38 | Palm Beach County | \$456,216 | \$912,433 |
| Peanut Island Park - Phase 1 B & 2 A | PB-96-44 | Palm Beach County | \$399,050 | \$798,100 |
| Red Reef Park Estuarine Enhancement | PB-96-45 | Palm Beach County D.E.R.M. | \$57,270 | \$114,540 |
| Light Harbor Marina - Phase I (Project Expired) | PB-97-51 | Palm Beach County | \$80,000 | \$164,552 |
| Waterway Safety, Education & Enforcement | PB-97-52 | PBC County Sheriff's Office | \$52,000 | \$61,400 |
| Inshore Artificial Reef | PB-97-53 | PBC Board of Commissioners | \$50,000 | \$107,134 |
| C.D. R.O.M. & Web Site For Lake Worth Lagoon | PB-97-54 | Palm Beach County | \$70,000 | \$92,000 |
| Light Harbor Marina Construction (Project Expired) | PB-98-62 | Palm Beach County | \$500,000 | \$2,100,000 |
| Habitat Enhancement Along Lake Worth Golf Course | PB-98-63 | Palm Beach County | \$15,000 | \$30,000 |
| Preconstruction Work Munyon Island Boat Dock (Expired) | PB-98-64 | Palm Beach County | \$10,000 | \$20,000 |
| Exotic Vegetation Removal & Env. Restoration | PB-99-74 | Palm Beach County | \$5,250 | \$10,500 |
| Inshore Artificial Reef Project | PB-99-75 | Palm Beach County | \$30,000 | \$60,000 |
| Peanut Island Development - Phase 3 | PB-99-76 | Palm Beach County | \$97,500 | \$195,000 |
| Boat Club Park Navigation Channel Dredging | PB-BB-00-84 | City Of Boynton Beach | \$22,500 | \$25,000 |
| Boat Club Park Navigation Channel Dredging | PB-BB-02-97 | City Of Boynton Beach | \$18,000 | \$40,000 |
| Boat Club Park Fishing/ Viewing Pier | PB-BB-03-105 | City Of Boynton Beach | \$22,430 | \$44,860 |
| Jaycee Park Environmental Education | PB-BB-09-136 | City Of Boynton Beach | \$77,045 | \$154,090 |
| Boat Club Park Channel Maintenance Dredging | PB-BB-91-14 | City of Boynton Beach | \$80,000 | \$80,000 |
| Mangrove Nature Preserve | PB-BB-92-24 | City of Boynton Beach | \$15,250 | \$30,500 |
| Boynton Beach Downtown Mangrove Park | PB-BB-94-36 | City Of Boynton Beach | \$195,000 | \$898,234 |
| Safe Waterways | PB-BB-98-71 | City Of Boynton Beach | \$51,670 | \$90,231 |
| Okeechobee Waterway & Inland Marina Channels | PB-BG-08-129 | City Of Belle Glade | \$480,500 | \$961,000 |
| Okeechobee Waterway & Navigation Channels | PB-BG-09-135 | City Of Belle Glade | \$328,770 | \$657,540 |
| Restore Boardwalk, Nav. & Dockage, N. Marina Basin-ph I | PB-BG-12-159 | City Of Belle Glade | \$29,000 | \$58,000 |
| Belle Glade Marina Wharf Repairs (GRANT CANCELLED) | PB-BG-87-1 | City of Belle Glade | \$0 | \$0 |
| Belle Glade Marina Seawall Construct.(GRANT CANCELLED) | PB-BG-87-2 | City of Belle Glade | \$0 | \$0 |
| Boat Ramp Parking Improvement - Belle Glade Marina | PB-BG-92-22 | City of Belle Glade | \$32,500 | \$65,000 |
| Boca Raton Inlet Navigation Maintenance Program | PB-BR-00-82 | City Of Boca Raton | \$100,000 | \$200,000 |
| Inflatable Rescue Boat Safety Program | PB-BR-00-83 | City Of Boca Raton | \$13,762 | \$18,350 |
| Spanish River Police Dockage Facility | PB-BR-02-96 | City Of Boca Raton | \$100,000 | \$200,000 |
| Boca Raton Fire Rescue Boat | PB-BR-03-104 | City Of Boca Raton | \$37,502 | \$75,004 |
| Boca Raton Inlet Dredging Equipment | PB-BR-12-160 | City Of Boca Raton | \$109,050 | \$218,100 |
| Lake Wyman Park Development | PB-BR-88-4 | City of Boca Raton | \$115,800 | \$231,600 |
| Boating Safety | PB-BR-96-48 | City Of Boca Raton | \$32,000 | \$56,573 |
| Inlet Navigation & Sand Transfer Project | PB-BR-97-57 | City Of Boca Raton | \$42,200 | \$404,487 |
| Waterways Boating Safety Programs And Equipment | PB-BR-98-66 | City Of Boca Raton | \$29,994 | \$54,994 |
| Boca Raton Inlet Dredging Equipment | PB-BR-98-67 | City Of Boca Raton | \$240,000 | \$546,000 |
| El Rio Canal Dredging | PB-BR-99-77 | City Of Boca Raton | \$23,052 | \$92,200 |

**FLORIDA INLAND NAVIGATION DISTRICT
WATERWAYS ASSISTANCE PROGRAM PROJECTS
IN PALM BEACH COUNTY - 1986-2013**

| Project Name | Project Number | Project Sponsor | Grant Amount | Total Cost |
|---|----------------|-----------------------------|--------------|-------------|
| Hillsboro Canal Maintenance Dredge Project Ph I | PB-BR-13-176 | City Of Boca Raton | \$75,000 | \$100,000 |
| Police Boat | PB-DB-00-85 | City Of Delray Beach | \$47,229 | \$62,974 |
| Land Acquisition - Boat Ramp Parking | PB-DB-00-86 | City Of Delray Beach | \$70,000 | \$140,000 |
| Municipal Marina | PB-DB-00-87 | City Of Delray Beach | \$81,000 | \$402,000 |
| Seawall Parks | PB-DB-02-98 | City Of Delray Beach | \$20,000 | \$40,000 |
| Delray Intracoastal Park (M.S.A. 650) | PB-DB-06-117 | City Of Delray Beach | \$688,420 | \$1,376,840 |
| Mangrove Park Boat Ramp Reconstruction | PB-DB-10-144 | City Of Delray Beach | \$85,740 | \$175,000 |
| Veterans Park - Phase I | PB-DB-90-9 | City Of Delray Beach | \$157,500 | \$315,032 |
| Seawall Rehabilitation Project | PB-DB-94-35 | City Of Delray Beach | \$164,950 | \$408,900 |
| Knowles Park Boat Ramp | PB-DB-97-58 | City Of Delray Beach | \$77,261 | \$154,522 |
| Delray Beach Marina Improvements | PB-DR-88-3 | City Of Delray Beach | \$75,000 | \$150,000 |
| Environmental Boating Education Program | PB-JB-91-15 | Town of Juno Beach | \$19,000 | \$19,000 |
| Riverwalk - Phase I I | PB-JU-00-88 | Town Of Jupiter | \$500,000 | \$1,000,000 |
| Water Safety Program | PB-JU-00-89 | Town Of Jupiter | \$13,445 | \$17,926 |
| Jupiter Riverwalk | PB-JU-02-99 | Town Of Jupiter | \$500,000 | \$1,002,589 |
| Bridge Park Plaza | PB-JU-03-106 | Town Of Jupiter | \$246,250 | \$492,500 |
| Make Our Waterways Safe (Withdrawn) | PB-JU-06-118 | Town Of Jupiter | \$30,000 | \$95,000 |
| Inlet Village Marina | PB-JU-07-123 | Town Of Jupiter | \$200,000 | \$400,000 |
| Riverwalk At Harborside - Phase A | PB-JU-09-137 | Town Of Jupiter | \$827,505 | \$1,655,010 |
| Riverwalk At Harborside - Phase B | PB-JU-10-145 | Town Of Jupiter | \$700,000 | \$1,400,000 |
| Jupiter Riverwalk & Public Docks At Jupiter Marina | PB-JU-12-161 | Town Of Jupiter | \$780,939 | \$1,621,466 |
| Safe Waterways | PB-JU-96-43 | Jupiter Police Department | \$35,598 | \$60,858 |
| Jupiter Riverwalk - Phase I | PB-JU-99-81 | Town Of Jupiter | \$429,025 | \$1,255,050 |
| Bicentennial Park | PB-LA-92-25 | Town of Lantana | \$57,000 | \$114,000 |
| Sportsman's Park | PB-LA-93-31 | Town Of Lantana | \$152,875 | \$340,750 |
| Lantana Nature Preserve | PB-LA-99-79 | Town Of Lantana | \$143,750 | \$495,000 |
| North Lake Park | PB-LA-13-175 | Town of Lantana | \$104,000 | \$208,000 |
| Lake Park Marina Revitalization - Phase I I I | PB-LP-00-91 | Town Of Lake Park | \$542,000 | \$1,145,000 |
| Lake Park Marina Revitalization - Phase I V | PB-LP-01-93 | Town Of Lake Park | \$451,000 | \$902,000 |
| Lake Shore Park Seawall Replacement | PB-LP-04-109 | Town Of Lake Park | \$187,500 | \$375,000 |
| Lake Shore Park Seawall Replacement | PB-LP-07-124 | Town Of Lake Park | \$205,000 | \$410,000 |
| Lake Park Harbor Marina Breakwater-phase I (Withdrawn) | PB-LP-08-130 | Town Of Lake Park | \$62,254 | \$124,508 |
| Lake Park Harbor Marina Breakwater-ph I I (Withdrawn) | PB-LP-09-138 | Town Of Lake Park | \$349,292 | \$698,585 |
| Lake Park Harbor Marina Breakwater Ph II | PB-LP-13-174 | Town Of Lake Park | \$249,115 | \$498,230 |
| Lake Park Municipal Marina Basin & Maintenance Dredging | PB-LP-94-32 | Town Of Lake Park | \$67,803 | \$123,752 |
| Lake Park Marina Revitalization - Phase I | PB-LP-98-73 | Town Of Lake Park | \$150,000 | \$360,000 |
| Lake Park Marina Revitalization - Phase I I | PB-LP-99-80 | Town Of Lake Park | \$584,000 | \$1,168,000 |
| Bryant Park Seawall Restoration - Phase A | PB-LW-07-125 | City Of Lake Worth | \$802,007 | \$1,604,014 |
| Bryant Park Boat Ramp Imp. & Bulkhead Repairs - Phase I | PB-LW-95-39 | City Of Lake Worth | \$13,000 | \$26,000 |
| Bryant Park Boat Ramp Improvements - Phase I I | PB-LW-96-42 | City Of Lake Worth | \$180,000 | \$360,000 |
| Lakeside Park | PB-NPB-06-119 | Village Of North Palm Beach | \$150,000 | \$300,000 |

**FLORIDA INLAND NAVIGATION DISTRICT
WATERWAYS ASSISTANCE PROGRAM PROJECTS
IN PALM BEACH COUNTY - 1986-2013**

| Project Name | Project Number | Project Sponsor | Grant Amount | Total Cost |
|---|----------------|-----------------------------|--------------|-------------|
| Lakeside Park | PB-NPB-90-11 | Village of North Palm Beach | \$53,000 | \$106,000 |
| Shoreline Protection Project - NPB Country Club | PB-NPB-92-21 | Village of North Palm Beach | \$24,400 | \$48,800 |
| Shoreline Protection Program | PB-NPB-95-41 | Village of North Palm Beach | \$370,500 | \$741,000 |
| Waterways Patrol And Rescue Vessel | PB-NPB-98-70 | Village of North Palm Beach | \$30,411 | \$44,078 |
| Marina & Access Channel Dredging | PB-PA-02-100 | City Of Pahokee | \$250,000 | \$500,000 |
| Pahokee Marina/ Channel Dredging | PB-PA-04-112ER | City Of Pahokee | \$250,000 | \$350,000 |
| Marine Reconstruction | PB-PA-05-113 | City Of Pahokee | \$500,000 | \$2,707,000 |
| Shoreline Stabilization & Marina Dredging | PB-PA-06-120 | City Of Pahokee | \$425,000 | \$975,325 |
| Route 2 Channel Markers | PB-PA-11-156 | Town Of Pahokee | \$20,850 | \$30,000 |
| Public Marina Wave Attenuator - Phase I | PB-PA-11-157 | Town Of Pahokee | \$37,500 | \$75,000 |
| Pahokee Marina and Park | PB-PA-91-16 | City Of Pahokee | \$80,000 | \$195,000 |
| Pahokee Marina Improvements | PB-PA-96-46 | City Of Pahokee | \$30,000 | \$60,000 |
| Pahokee Marina Improvements | PB-PA-98-65 | City Of Pahokee | \$98,950 | \$197,900 |
| Lake Worth Inlet Sand Transfer Plant Renovation | PB-PB-09-139 | Town Of Palm Beach | \$300,000 | \$2,248,000 |
| Town Of Palm Beach Waterway - Phase I | PB-PB-12-164 | Town Of Palm Beach | \$40,000 | \$80,000 |
| Public Marina Dredging | PB-PB-92-23 | Town Of Palm Beach | \$200,000 | \$250,000 |
| Australian Dock Replacement & Expansion | PB-PB-96-47 | Town Of Palm Beach | \$21,000 | \$105,000 |
| Australian Dock Repl. & Expansion - Phase II | PB-PB-97-56 | Town Of Palm Beach | \$382,000 | \$1,959,482 |
| P.B.S. Inlet Park Redevelopment - Phase I | PB-PBS-02-102 | Town Of Palm Beach Shores | \$25,000 | \$50,000 |
| Inlet Park Construction - Phase II & III | PB-PBS-05-115 | Town Of Palm Beach Shores | \$150,000 | \$300,000 |
| Palm Beach Maritime Museum Environmental Educ. Program | PB-PPB-93-27 | Port Of Palm Beach | \$60,000 | \$60,000 |
| Docks For Environmental Education Project | PB-PPB-97-59 | Port Of Palm Beach | \$69,521 | \$77,246 |
| Municipal Marina Remediation - Phase I | PB-RB-09-141 | City Of Riviera Beach | \$475,000 | \$950,000 |
| Municipal Marina Construction | PB-RB-10-150 | City Of Riviera Beach | \$850,000 | \$4,270,366 |
| Municipal Marina Construction | PB-RB-11-158 | City Of Riviera Beach | \$1,500,000 | \$3,500,000 |
| Bicentennial Park Improvements - Phase I | PB-RB-12-165 | City Of Riviera Beach | \$50,000 | \$100,000 |
| Municipal Marina Construction Ph B1 | PB-RB-12-166 | City Of Riviera Beach | \$1,000,000 | \$3,399,000 |
| Palm Beach Maritime Museum Env. Education (Expired) | PB-RB-13-177 | City Of Riviera Beach | \$750,000 | \$4,341,396 |
| Palm Beach Seaport Aquarium - Phase I (Cancelled) | PB-RB-91-17 | City Of Riviera Beach | \$45,000 | \$45,000 |
| S.V. Florida, The Ship For Kids (Project Expired) | PB-RB-96-49 | City Of Riviera Beach | \$40,000 | \$140,000 |
| Riviera Beach Municipal Marina Dredging | PB-RB-96-50 | City Of Riviera Beach | \$194,700 | \$491,600 |
| Bicentennial Park Boardwalk & Fishing Pier (Expired) | PB-RB-98-68 | City Of Riviera Beach | \$136,200 | \$152,000 |
| Boat Ramp Park Expansion - Phase I (Expired) | PB-RB-99-78 | City Of Riviera Beach | \$41,945 | \$83,890 |
| I.C.W. Tributary Channel Improvements - Ph I (Expired) | PB-SB-02-103 | City Of South Bay | \$76,000 | \$152,000 |
| Currie Park Boat Launching & Bulkhead Improvements | PB-SB-98-72 | City Of South Bay | \$15,000 | \$27,000 |
| West Palm Beach Waterfront Park - Phase I | PB-WPB-00-92 | City Of West Palm Beach | \$125,000 | \$255,000 |
| Waterfront Park - Phase II | PB-WPB-04-111 | City Of West Palm Beach | \$250,000 | \$750,000 |
| West Palm Beach Waterfront Park - Phase III | PB-WPB-05-116 | City Of West Palm Beach | \$1,000,000 | \$3,500,000 |
| West Palm Beach Waterfront Park - Phase IV | PB-WPB-06-122 | City Of West Palm Beach | \$1,000,000 | \$3,000,000 |
| City Commons & Waterfront Park - Phase V | PB-WPB-07-128 | City Of West Palm Beach | \$1,000,000 | \$3,000,000 |
| | PB-WPB-08-134 | City Of West Palm Beach | \$1,000,000 | \$2,000,000 |

**FLORIDA INLAND NAVIGATION DISTRICT
WATERWAYS ASSISTANCE PROGRAM PROJECTS
IN PALM BEACH COUNTY - 1986-2013**

| Project Name | Project Number | Project Sponsor | Grant Amount | Total Cost |
|--|-----------------------|-------------------------|------------------------|-------------------------|
| City Commons & Waterfront Project - Phase V-2 | PB-WPB-09-142 | City Of West Palm Beach | \$150,000 | \$300,000 |
| Currie Park Boating Improvement | PB-WPB-09-143 | City Of West Palm Beach | \$233,800 | \$467,600 |
| City Commons Kayak/ Paddle Boat Launch - Phase I | PB-WPB-10-151 | City Of West Palm Beach | \$30,000 | \$60,000 |
| Currie Park Boat Access Improvement - Phase I | PB-WPB-12-167 | City Of West Palm Beach | \$25,000 | \$50,000 |
| Currie Park Fishing Piers Improvement Project | PB-WPB-12-168 | City Of West Palm Beach | \$394,000 | \$788,000 |
| Currie Park Improvements - Phase I | PB-WPB-89-6 | City of West Palm Beach | \$91,750 | \$400,000 |
| Currie Park - Phase I I | PB-WPB-90-10 | City of West Palm Beach | \$100,000 | \$230,000 |
| Renovation Of Fishing Pier @ 54th Street Park | PB-WPB-93-30 | City Of West Palm Beach | \$36,475 | \$72,950 |
| Downtown Waterfront Park (Project Expired) | PB-WPB-95-40 | City Of West Palm Beach | \$37,500 | \$75,000 |
| Docks For Environmental Education Project | PB-WPB-97-61 | City Of West Palm Beach | \$135,882 | \$150,980 |
| P. B. Maritime Museum Dock Extension & Building | PB-WPB-98-69 | City Of West Palm Beach | \$137,550 | \$183,400 |
| TOTALS | | | \$42,007,074.00 | \$129,270,782.75 |





TAYLOR ENGINEERING, INC.

Delivering Leading-Edge Solutions

August 1, 2014

Mr. Mark Crosley
Executive Director
Florida Inland Navigation District (FIND)
1314 Marcinski Road
Jupiter, FL 33477

RE: Scope of Professional Engineering Services to Update the St. Johns and Flagler Dredged Material Management Plans

Mr. Crosley:

Per your request, Taylor Engineering has prepared the attached Scope of Services (Attachment A) and Cost Proposal (Attachment B) related to the dredged material management plan update for both St. Johns and Flagler counties. Attachment A tasks include

- Task 1 – Documentation
- Task 2 – Dredging History and Projections
- Task 3 – Dredged Material Management Plan Update

Taylor Engineering will complete the work described herein for a fixed fee of \$132,490.00.

We greatly appreciate this opportunity to serve the FIND. Please contact me if you have any questions or comments.

Sincerely,

John Adams, P.E.
Senior Advisor, Waterfront Engineering

Attachments (2)

ATTACHMENT A

**SCOPE OF PROFESSIONAL ENGINEERING SERVICES TO
UPDATE THE ST. JOHNS AND FLAGLER
DREDGED MATERIAL MANAGEMENT PLANS**

INTRODUCTION

Taylor Engineering, Inc. originally completed the Long-Range Dredged Material Management Plan for the Intracoastal Waterway for St. Johns and Flagler counties in September 1989 and September 1993, respectively. These Phase I reports subsequently resulted in the development of an overall site bank and associated Phase II reports (i.e., Environmental Site Documentation, Management Plan, Engineering Narrative, and Cost Report) for the selected beach placement or dredged material management areas (DMMA). Table 1 summarizes the existing sites, by reach and Waterway designation, for both St. Johns and Flagler counties.

Table 1. St. Johns and Flagler Counties Site Bank by Reach Designation

| COUNTY | REACH | DMMA |
|----------|-------|---|
| ST JOHNS | I | SJ-14 |
| | II | |
| | III | SJ-29 |
| | IV | SJ-20A |
| | V | SJ-1, Matanzas Inlet Beach Disposal Area |
| FLAGLER | I | FL-3 |
| | II | FL-8 |
| | III | FL-12 |
| | IV | |

The collective Phase I and II documents — created and updated over a 27-year period (i.e., between 1986 and 2013) — comprise the dredged material management plan (DMMP) for the two counties. Taylor Engineering will consolidate the resulting and voluminous documentation, comprising the original set of reports, into one up-to-date and succinct document for each county. The Florida Inland Navigation District (FIND) will use the resulting DMMPs for reference purposes and immediate and future planning efforts. The following Scope of Services details the steps necessary to achieve this effort.

TASK 1 DOCUMENTATION

Taylor Engineering will collect, review, and consolidate the original Phase I and II DMMP documents (including dredging history and previously collected topographic and bathymetric surveys, geotechnical investigations, sediment chemistry data, etc.) for both St. Johns and Flagler counties into two separate working documents (i.e., one per county). This task includes sufficient time (5 days) for a staff engineer to spend at the U.S. Army Corps of Engineers (USACE) and FIND offices to review and acquire records. As part of this effort, Taylor Engineering will submit both electronic and hard copies of the collected documents for FIND's records. The results of this task will serve as the foundation for the updated DMMPs.

ATTACHMENT A

TASK 2 DREDGING HISTORY AND PROJECTIONS

A detailed review of USACE and FIND property records, historical maintenance dredging records and bathymetric survey data, as well as on the ground documentation of site characteristics were used to develop 50-year maintenance dredging projections, dredging frequencies, and defined dredging reaches for each county. In this task, Taylor Engineering will combine the historical data with currently available data to update and project future dredging quantities, dredging frequencies, and dredged material characteristics for reference and use in the two updated DMMPs.

2.1 Future Dredge Quantities Projection

Taylor Engineering will review and incorporate all data from AIWW and ICWW post-1989 and 1993 maintenance dredging events with the data used in the original DMMPs to create consolidated and comprehensive dredging tables for both St. Johns and Flagler counties. We understand that the FIND will perform a new three-line detailed survey of the ICWW as part of this overall DMMP update. Taylor Engineering will take the resulting dredge quantities (provided by the selected FIND surveyor) from the 2014 bathymetric survey, along with the dredge quantities from the previous centerline surveys performed in 1996, 2000, and 2004 and incorporate the existing shoaling conditions into the overall evaluation of each reach. Baseline shoal volumes will incorporate: 1) the estimated volume of material removed from the channel during maintenance dredging operations, 2) the expected frequencies of dredging, by reach, based upon the updated database, and 3) the estimated shoal volume presently contained within the authorized channel.

2.2 Dredged Material Quality Profile

This task, based on available existing data, will profile the physical and chemical sediment characteristics of material targeted for dredging. Taylor Engineering will compile, review, and summarize all USACE- and FIND-provided geotechnical and sediment chemistry data into tabular format. Tabular information will contain the year of collection, identification of boring (in addition to the reach and cut location), and a soil description by depth, if available.

TASK 3 DREDGED MATERIAL MANAGEMENT PLAN UPDATE**3.1 Draft Report**

Taylor Engineering will use the results of Tasks 1 and 2 to prepare and submit one updated draft Summary DMMP report for each county (St. Johns and Flagler) to FIND for review and comment. We anticipate each report will include the following sections: (1) Introduction, (2) DMMP Development, (3) 50-Year Material Storage Requirement, (4) Dredged Material Placement Sites, (5) Conclusions and Recommendations, and (6) References.

The introduction and DMMP development sections will summarize the background of the DMMP and summarize the criteria behind the DMMA selection. The material storage requirement section will summarize our Task 2 efforts. The dredged material placement site chapter will provide a detailed narrative for each site that will incorporate the critical details from the previously published Management Plan and Engineering Narrative. For each constructed DMMA, we will determine or verify actual capacities from as-built surveys through the generation of 3-D CAD models. For non-constructed DMMA's, we will verify the previously reported design capacities. Each DMMA will have a maximum 2-page summary sheet that will detail all relevant site characteristics (i.e., location, As-Built or preliminary design storage capacity, dike height, excavation depth, maximum pumping distance, distance from Waterway, comprehensive plan designation, adjacent land use, pipeline easement, etc.), available site photographs, and an aerial-based plan-view map that will incorporate either the As-Built or preliminary

ATTACHMENT A

design of the DMMA. Finally, to assist FIND with both immediate and future planning, the conclusions and recommendations section of the report will summarize key findings and provide a long-range dredging and DMMA construction schedule. A separate document, intended to be distributed to the public, will summarize (in approximately 4 to 5 pages) the key features of the DMMP.

We will submit the completed draft report, along with the summary document, to FIND in electronic format.

3.2 Final Report

Within three weeks of receipt of FIND's comments on the draft reports Taylor Engineering will submit the revised final reports to FIND for St. Johns and Flagler counties. This submittal will include two electronic and two hard copies of each final report, as well as an electronic file, neatly and succinctly organized for each county, of all documents collected and used in the preparation of the two updated DMMPs.

ESTIMATED SCHEDULE

| No. | Task | Months from Notice to Proceed | | | | | | | | |
|-----|---|-------------------------------|---|---|---|---|---|---|---|---|
| | | 1 | 2 | 3 | 4 | 5 | 6 | 7 | 8 | 9 |
| 1 | Documentation | | | | | | | | | |
| 2 | Dredging History and Projections | | | | | | | | | |
| 3 | Dredged Material Management Plan Update | | | | | | | | | |

ATTACHMENT B

TAYLOR ENGINEERING, INC.
COST SUMMARY BY TASK
P2014-010: SCOPE OF PROFESSIONAL ENGINEERING SERVICES TO UPDATE
THE ST. JOHNS AND FLAGLER DREDGED MATERIAL MANAGEMENT PLANS

TASK 1: DOCUMENTATION

| <i>Labor</i> | <i>Hours</i> | <i>Cost (\$)</i> | <i>Task Totals</i> |
|-----------------------------|--------------|------------------|---------------------|
| R. Bruce Taylor, Ph.D. P.E. | 2.0 | 612.00 | |
| Senior Advisor | 22.0 | 4,070.00 | |
| Director | 46.0 | 7,130.00 | |
| Senior Professional | 8.0 | 1,080.00 | |
| Staff Professional | 84.0 | 7,224.00 | |
| Administrative | 40.0 | 2,080.00 | |
| Total Man-Hours | 202.0 | | |
| Labor Cost | | | 22,196.00 |
| <i>Total Task 1</i> | | | <i>\$ 22,196.00</i> |

TASK 2: DREDGING HISTORY AND PROJECTIONS

| <i>Labor</i> | <i>Hours</i> | <i>Cost (\$)</i> | <i>Task Totals</i> |
|-----------------------------|--------------|------------------|---------------------|
| R. Bruce Taylor, Ph.D. P.E. | 2.0 | 612.00 | |
| Vice President | 8.0 | 1,480.00 | |
| Senior Advisor | 10.0 | 1,850.00 | |
| Director | 40.0 | 6,200.00 | |
| Staff Professional | 108.0 | 9,288.00 | |
| Senior Technical Support | 60.0 | 6,180.00 | |
| Total Man-Hours | 228.0 | | |
| Labor Cost | | | 25,610.00 |
| <i>Total Task 2</i> | | | <i>\$ 25,610.00</i> |

TASK 3: DREDGED MATERIAL MANAGEMENT PLAN UPDATE

| <i>Labor</i> | <i>Hours</i> | <i>Cost (\$)</i> | <i>Task Totals</i> |
|-----------------------------|--------------|------------------|---------------------|
| R. Bruce Taylor, Ph.D. P.E. | 4.0 | 1,224.00 | |
| Vice President | 20.0 | 3,700.00 | |
| Senior Advisor | 44.0 | 8,140.00 | |
| Director | 184.0 | 28,520.00 | |
| Senior Professional | 16.0 | 2,160.00 | |
| Staff Professional | 228.0 | 19,608.00 | |
| Editor | 24.0 | 2,376.00 | |
| Senior Technical Support | 180.0 | 18,540.00 | |
| Administrative | 8.0 | 416.00 | |
| Total Man-Hours | 708.0 | | |
| Labor Cost | | | 84,684.00 |
| <i>Total Task 3</i> | | | <i>\$ 84,684.00</i> |

Project Total \$ 132,490.00

| Project Sponsor | Project Name | Project Number | Reason for Extension |
|------------------------|---|----------------|--|
| City of Dania Beach | Municipal Marina Renovation Project - Phase I I | BR-DB-12-95 | Completing final construction |
| City of Pompano Beach | Alsdorf Park Improvements - Phase I | BR-PB-12-100 | Awaiting permits |
| City of Palm Bay | Bayfront Waterfront | BV-PB-12-116 | Complexities in Private/Public |
| Bal Harbour Village | Sand Bypass At Bakers Haulover Inlet - Phase I | DA-BH-12-135 | Interlocal agreement and permit delays |
| City of Miami Beach | South Pointe Pier Construction - Phase I I | DA-MB-12-142 | Working on 2 project claims needing |
| City of Miami | Marine Stadium Marina Seawall Replacement - Phase I I | DA-MI-12-138 | Project still underway |
| City of Atlantic Beach | Marsh Preserves, Launch, Fishing Improvement- Phase I | DU-AB-12-120 | Awaiting permits |
| City of Jacksonville | Pottsburg Creek Dredge - Phase I | DU-JA-12-122 | Awaiting permits |
| Indian River County | Lagoon Greenway - Phase B-2 | IR-12-53 | Construction completion date |
| City of Riviera Beach | Bicentennial Park Improvements - Phase I | PB-RB-12-165 | Working to coordinate development |
| City of Riviera Beach | Municipal Marina Construction - Phase B | PB-RB-12-166 | 99% complete awaiting punch list items |
| | | | |
| | | | |
| | | | |



City of Dania Beach FLORIDA

August 29, 2014

Janet Zimmerman
Assistant Executive Director
Florida Inland Navigation District
1314 Marcinski Road
Jupiter, Florida 33477-9427

Via email- zimmerman@aicw.org

Re: Project # BR-DB-12-95
Request for extension of Project Period

Dear Ms. Zimmerman:

The City of Dania Beach is requesting an extension to complete the above referenced project and to submit all required payment reimbursement information. The new marina is substantially complete with the general contractor, however, the security portion of the marina was removed from their contract and it is being bid separately. I anticipate the security to be completed by January 2015.

After consulting with your office, the City since this is a multi-year project. This will

Thank you for consideration of this request meeting.

*Sept
agenda*

for reimbursement
of security.

your Broward County

Sincerely,

Colin Donnelly
Assistant City Manager

cc: Finance Department

"Broward's First City"

100 West Dania Beach Boulevard, Dania Beach, Florida 33004 • Phone: 954-924-6800 • www.daniabeachfl.gov

Mark A. Beaudreau, Recreation Programs Administrator

E: mark.beaudreau@copbfl.com | P: 954.786.4191 | F: 954.786.4113

REC'D

AUG - 8 2014

Florida Inland
Navigation District

Florida Inland Navigation District
Janet Zimmerman, Assistant Executive Director
1314 Marcinski Road
Jupiter, FL 33477-9427

August 1, 2014

Dear Ms. Zimmerman,

The City of Pompano Beach would like to request a one year extension on our Alsdorf Park Improvements – Phase I Project # BR-PB-12-100 which was to design, survey, Geotech and permit improvements to Alsdorf Park. Currently, outside of a few pending permits; this Phase I portion is complete allowing the City to apply for Phase 2- construction grant dollars. Submittal of Phase 2 was completed in April 2014 and we are currently awaiting notification of approval. This extension will allow the City to complete any outstanding permitting issues and begin the reimbursement process for associated expenditures.

We understand if the extension is approved that the project will need to be completed within the one-year deadline. We look forward to hearing from you and having our project included as a carryover item for the FY 2014/2015 budget year. Our timeline for the project is as follows:

- October 2014- outstanding permits received and phase 2 begins
- January 2015-- submittal of invoices to FIND for reimbursement of Phase I
- March 2015- close out of Phase I

If you need any additional information please contact Cynthia Kitts or myself at 954-786-4191.

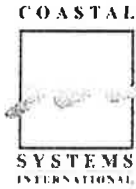
Sincerely,



Mark A. Beaudreau
Recreation Programs Administrator

afh

cc: Cynthia Kitts, Recreation Manager
Rob McCaughan, Public Works Director



COASTAL SYSTEMS INTERNATIONAL, INC.
 2047 Vista Parkway, Suite 101 • West Palm Beach, FL 33411
 Tel: 561-640-1003 • Fax: 561-640-1009
www.coastalsystemsint.com

149204

August 15, 2014

Ms. Janet Zimmerman
 Assistant Executive Director
Florida Inland Navigation District
 1314 Marcinski Road
 Jupiter, FL 33477-9498

Via E-mail: jjimmerman@aicw.org

RE: FIND Grant Extension Request for Sand Bypass at Baker's Haulover Inlet - Phase I, Bal Harbour Village Miami-Dade County, FL

Ms. Zimmerman,

On behalf of our Client, Bal Harbour Village, we respectfully request a one-year project agreement extension for the Sand Bypass at Baker's Haulover Inlet - Phase I Project in Bal Harbour Village (DA-BH-12-135).

The permit applications were submitted on March 4, 2014. We received requests for additional information from DEP and DERM on April 3, 2014 requesting additional data be collected and an interlocal agreement between Bal Harbor Village and Miami-Dade County be adopted. The delays to the permitting process were the result of the time it took for the Village to negotiate an interlocal agreement with Miami-Dade County. This process was delayed because the County was undergoing reorganization. The interlocal agreement had to be approved by the Board of County Commissioners and Village Council. The interlocal agreement was approved on May 21, 2014. Coastal Systems has been collecting the remaining requested data and is actively working to submit the RAI responses in early September 2014. We anticipate securing permits by August of 2015.

Thank you for your review of this information. Should you have any questions or require additional information, please do not hesitate to contact me at (561) 331-8850 or cbarrett@coastalsystemsint.com.

149204
Ms. Janet Zimmerman
August 15, 2014
Page 2

Sincerely,
COASTAL SYSTEMS INTERNATIONAL, INC.

A handwritten signature in cursive script, appearing to read "Christie Barrett".

Christie Barrett
Environmental/Permitting Project Manager

CAB:

File, TKB, PC, CAB
F:\Project\149204\Permitting\FIND Grant 2012\14-08-15) FIND Extension Request Bal Harbour Village.docx



CITY OF PALM BAY
BAYFRONT COMMUNITY REDEVELOPMENT AGENCY
 3790 Dixie Highway, NE, Suite B * Palm Bay, FL 32905 * (321) 409-7187

August 7, 2014

REC'D 

AUG 11 2014

Florida Inland
 Navigation District

Florida Inland Navigation District Commission
 c/o Janet Zimmerman, Asst. Executive Director
 1314 Marcinski Road
 Jupiter, FL 33477-9427


Re: Project Completion and Agreement Extension
 Bayfront Waterfront
 Project #BV-PB-12-116

Dear Florida Inland Navigation District Commissioners,

The City of Palm Bay and the Bayfront Community Redevelopment Agency (CRA) respectfully request an additional year extension on Project #BV-12-116. The need for the extension is due to the complexities of obtaining a public-private partnership to develop a mixed use waterfront destination with public access to the water. The property has been purchased however it would not be prudent to construct water access improvements such as day slip dockage and a canoe/kayak launch until a private development partner is on-board and development plans fleshed out.

The City has pitched the property to a number of potential partners. One in particular has indicated an interest in partnering with the City and the Bayfront CRA to develop the site. Negotiations are currently taking place between the parties. Once an agreement is obtained regarding developing the site, the City and Bayfront CRA would be in position to construct the public access improvements.

Sincerely,



Tim Ford
 BCRA Administrator

TF/cg

cc: Sue Hann, City Manager
 Chad Shultz, Deputy City Manager
 BCRA Commissioners



City of Miami Beach, 1700 Convention Center Drive, Miami Beach, Florida 33139, www.miamibeachfl.gov

OFFICE OF BUDGET AND PERFORMANCE Grants Management
Tel: 305.673.7510 , Fax: 786.394.4675

July 29, 2014

Ms. Janet Zimmerman
Assistant Executive Director
Florida Inland Navigation District
1314 Marcinski Road
Jupiter, FL. 33477

Re: FIND Project # DA-MB-12-142
South Pointe Pier Construction – Phase 2

Dear Ms Zimmerman:

The City of Miami Beach respectfully requests a six-month time extension, until March 1, 2015 for the South Pointe Pier Phase 2 Construction Project, Grant Agreement #DA-MB-12-142.

Current status of project

The project is completed and the City has a Temporary Certificate of Occupancy.

Reason for Delay

The entrance gate was taken out of the scope and assigned to the City's Art in Public Places. The gate was installed on July 25, 2014 and the permit for the gate needs to be closed out prior to the City contractor applying for the Certificate of Occupancy. Additionally, this project has two claims that need to be mediated prior to issuing final payment. The mediation meeting is being coordinated, but it will not take place any sooner than late August 2014. Once the claims are settled, then the contractor will invoice for final payment sometime in September 2014. The City needs an extension in order to provide FIND with the final invoice for the grant reimbursement.

We appreciate Florida Inland Navigation District's consideration of this request for an extension, due to the abovementioned reasons. If any additional information is needed, please contact me at (305) 673-7510.

Sincerely,

Judy Hoanshelt
Grants Manager

c: Aida Rodriguez, City of Miami Beach

City of Miami



DANIEL J. ALFONSO
City Manager

August 29, 2014

Janet Zimmerman, Assistant Executive Director
Florida Inland Navigation District
1314 Marcinski Rd
Jupiter, Florida 33477

RE: Marine Stadium Marina Seawall Replacement - Phase II
Project No. DA-MI-12-138

Dear Ms. Zimmerman:

The City of Miami respectfully requests a one-year extension of time for the above referenced agreement due to the project still being underway.

Your approval to extend the grant agreement would be gratefully appreciated. Should you have any questions, do not hesitate to contact me at (305) 416-1224.

Sincerely,

A handwritten signature in black ink, appearing to read "Mark Burns", is written over the word "Sincerely,".

Mark Burns
Director

c: Mark Spanioli, P.E., Director, CITP
Lillian Blondet, Director, Office of Grants Administration



REC'D *[initials]*
AUG 18 2014
Florida Inland
Navigation District

CITY OF ATLANTIC BEACH
DEPARTMENT OF PUBLIC WORKS
1200 SANDPIPER LANE
ATLANTIC BEACH, FLORIDA 32233-4318
TELEPHONE: (904) 247-5834
FAX: (904) 247-5843
SUNCOM: 852-5834
www.coab.us

August 12, 2014

Mr. Mark Crosby
Executive Director
Florida Inland Navigation District
1314 Marcinski Rd.
Jupiter, FL 33477

RE: DU-AB-12-120 Extension Request

Dear Mr. Crosby:

Please accept this letter as a formal request to extend the project deadline, due to the continuing delay in receiving our Army Corps. of Engineering permit for this project.

Our Consultant has been advised by the ACOE that they have written our permit and are now just waiting on the official consultation information from NMFS. NMFS doesn't think there will be an issue with their findings and hope to have it to the ACOE by August 1. Our plan is to advertise the project for bidding in early October, with award at the December 8th City Commission meeting. Construction would begin after the first of the year and be completed within six months.

If you have any questions or care to discuss in greater detail, please contact me at 904-247-5834.

Sincerely,

Rick Carper, P.E.
Deputy Public Works Director

DEPARTMENT OF PARKS, RECREATION AND COMMUNITY SERVICES



August 28, 2014

Ms. Janet Zimmerman
Assistant Executive Director
Florida Inland Navigation District
1314 Marcinski Road
Jupiter, Florida 33477

SUBJECT: Project Agreement Extension
Pottsburg Creek Dredge, Phase I (DU-JA-12-122)

Dear Ms. Zimmerman,

As the Project Liaison, I am requesting an extension for the aforementioned project. The dredge design is at 100% and all permit applications have been submitted to the appropriate agencies; however, we do not know when we will receive our permit approvals.

The current grant award agreement expires September 1, 2014. The City of Jacksonville is requesting a one-year extension, expiring September 1, 2015. Thank you for your assistance.

Sincerely,

A handwritten signature in black ink, appearing to read "B. P. Burket", is written over a horizontal line.

Brian Burket
Natural Resource Recreation Specialist



INDIAN RIVER COUNTY
Environmental Planning & Code Enforcement Section
 1801 27th Street, Vero Beach FL 32960
 772-226-1249 / 772-978-1806 fax
www.ircgov.com

August 14, 2014

Janet Zimmerman
 Assistant Executive Director
 Florida Inland Navigation District
 1314 Marcinski Road
 Jupiter, FL 33477-9427

Re: Request for Project Agreement Extension – Project # IR-12-53
 Lagoon Greenway Phase B-2

Dear Janet:

This letter is to formally request a one year extension to the Lagoon Greenway Phase B-2 Waterways Assistance Program project (# IR-12-53). The extension is requested in that construction of project improvements are not expected to be completed by the September 1, 2014 timeframe of the current project agreement.

Project Status and Anticipated Completion Date

The Lagoon Greenway Phase B-2 project consists of construction of a $\pm 1,100$ foot wetland boardwalk and a lagoon observation deck. Indian River County has contracted with Bayshore Construction, Inc. to conduct the work, which is scheduled to commence in approximately 2 to 3 weeks (late August/early September 2014). Once construction begins, the timeframe for completion is approximately 90 days. As such, completion of the project is anticipated to occur by late November/early December 2014.

Thank you and FIND for your assistance on this matter. If you have any questions or require more information, please let me know (772/226-1258, rdeblois@ircgov.com).

Sincerely,

A handwritten signature in black ink, appearing to read "RM DeBlois".

Roland M. DeBlois, AICP
 Chief, Environmental Planning
 & Code Enforcement Section

Cc: Stan Boling
 Kathy Charest (tm2014.0080)

CITY OF RIVIERA BEACH

DEPARTMENT OF COMMUNITY DEVELOPMENT
600 WEST BLUE HERON BLVD. • RIVIERA BEACH, FLORIDA 33404
(561) 845-4060

OFFICE OF
COMMUNITY DEVELOPMENT

REC'D 

FAX: (561) 845-4038

AUG - 8 2014

Florida Inland
Navigation District

August 6, 2014

Janet Zimmerman
Assistant Executive Director
Florida Inland Navigation District
1314 Marcinski Rd.
Jupiter, FL 33477

Re: Project Completion and Agreement Extensions
Bicentennial Park Improvements – Phase I – PB-RB-12-165

Dear Ms. Zimmerman:

Please accept this letter as a formal request for a 1-year extension to the Florida Inland Navigation District Project Agreement which expires on September 1, 2014.

The Bicentennial Park Improvement designs are currently completed, but since this project is part of a much larger Redevelopment Plan, the City is in need of an extension to coordinate all the development schedules. Please see the attached revised schedule to ensure the project will be complete within the 1-year deadline.

If you have any questions, please contact Mario Velasquez at (561) 845-4060.

Sincerely,



Mary McKinney, AICP
Director of Community Development

Cc: Jeff Gagnon, Planning and Zoning Administrator
Mario Velasquez, Senior Planner/GIS Specialist

Attachment: Revised schedule.

JH SPRAGUE CONSULTING L.L.C

10918 Larch CT Palm Beach Gardens FL, 33418

Phone 561-723-5418 — sprague.miaf@me.com

August 29, 2014

**Janet Zimmerman, Assistant Executive Director
Florida Inland Navigation District
1314 Marcinski Rd
Jupiter, Florida 33477**

After review of the City of Riviera Beach Municipal Marina Construction Project # PB-RB-12-166 we request a grant extension until September 30, 2015 to insure that we are able to close out the project within the grant completion requirements.

This portion of Phase B of the City Marina Construction is 99% completed, awaiting punch list items to be completed by the dock manufacturer and change order issues by the contractor to be resolved. We can then start the process of gathering the required paperwork to submit for reimbursement. As there are a number of grants in the project and not knowing how long it will take in dealing with those outstanding issues that are holding up paperwork we felt that an extension is warranted. We expect to finish the reimbursement process way before Sept 30, 2015.

If you have any questions please contact me.

Sincerely,



**John Sprague, CEO
JH Sprague Consulting LLC.
City of Riviera Beach Grant Project Consultant
10918 Larch Ct
Palm Beach Gardens, Florida 33418
561 723-5418**



TAYLOR ENGINEERING, INC.

Delivering Leading-Edge Solutions

August 29, 2014

Mark Crosley
Executive Director
Florida Inland Navigation District
1314 Marcinski Road
Jupiter, FL 33477

Re: Scope of Work and Cost Proposal
Permitting and Final Engineering Design
Dredged Material Management Area DU-9, St. Johns County, Florida

Dear Mr. Crosley:

Per your request, we have prepared the attached scope of work (Attachment A) and cost proposal (Attachment B) for the permitting and final engineering design of the dredged material management area (DMMA) DU-9 facility.

As detailed in the enclosed documents, our proposed services — based on an August 14 meeting with the Florida Department of Environmental Protection (Attachment C) — includes an update of the original permit application and design documents necessary to

- 1) apply for an Environmental Resources Permit (ERP) and wastewater permit and develop an appropriate dewatering plan to meet the state surface water criteria (with respect to remaining on-site contamination),
- 2) develop preliminary design documents suitable for the permit applications, and
- 3) update the bid package with current FIND contract documents, technical specifications, and construction drawings that address the build out of the permanent DMMA facility.

Taylor Engineering will perform these services on a cost plus basis, for a total cost not to exceed \$135,649.42. If you have any questions concerning this proposal, please contact Lori Brownell, P.E. or me. We can begin work upon your notice to proceed.

Sincerely,

John Adams, P.E.
Senior Advisor

Attachments (3)

**PERMITTING AND FINAL ENGINEERING DESIGN FOR
DREDGED MATERIAL MANAGEMENT AREA DU-9
ST. JOHNS COUNTY, FLORIDA**

Selected as the primary site to serve that portion of the Intracoastal Waterway (ICWW) in Duval County defined as Reach VII, the ±179.9-acre Florida Inland Navigation District (FIND)-owned Dredged Material Management Area (DMMA) DU-9 site has a preliminary design capacity adequate to meet the 50-year storage requirements (including bulking plus overdredging factor of 2.15) of 2,050,825 cubic yards (cy). FIND acquired the site — located 0.5-mile west of the ICWW, 1.5 miles south of the Duval/St. Johns County line, and within an extensive private landholding known as Dee Dot Ranch — in 1995 and obtained construction permits in 2000. Due to contamination found within the center of the site during preliminary construction activities (e.g., relocation of gopher tortoises) in 2001, the FIND modified the permit in 2004 and redesigned and constructed a smaller basin (with a capacity of 423,000 cy) north of the contaminated area (referred to as Dee Dot Sludge Disposal Area No. 2) in 2006. Since 2000, the owner of Dee Dot Ranch (i.e., Estuary Corporation) and its engineering consultant, CH2MHILL, have worked to remediate the area. As of March 2014, the Florida Department of Environmental Protection (FDEP) had granted conditional closure (i.e., no further cleanup required) pending the FIND acceptance of institutional controls. These controls include, but are not limited to, restrictions that would prohibit the withdrawal and use of surficial groundwater (less than or equal to 60 ft below land surface).

On August 14, FIND and Taylor Engineering met with the FDEP to discuss reinstating the original construction permit and, due to the above-noted limitations, obtain feedback about any resulting construction and operational restrictions of the DMMA. Based on outstanding concerns related to the conditional closure of the Dee Dot Sludge Disposal Area No. 2, surficial groundwater use restrictions, and events surrounding the operational error and dredged material release at DMMA SJ-14, FDEP stated it will require a new Environmental Resource Permit (ERP) application and an additional wastewater (related to on-site dewatering) permit application. Given the proposed DMMA expansion over and into the remediated area, FDEP relayed that construction and operational restrictions of the DMMA stem from its concerns regarding the site dewatering for construction and displacement and discharge of surficial groundwater into the ICWW during construction and use of the site (because construction would result in the bottom of the DMMA intersecting the seasonal high groundwater table and the DMMA use would fill and displace any exposed groundwater). While Taylor Engineering intends to use the original design and specifications to the extent practicable, FDEP has updated its ERP requirements since 2000, when the original permit was acquired. Therefore, the following scope of services includes an update of the original permit application and design documents necessary to (1) apply for an Environmental Resources Permit (ERP) and wastewater permit and develop an appropriate dewatering plan to meet the state surface water criteria (with respect to remaining on-site contamination), (2) develop preliminary design documents suitable for the permit applications, and (3) update the bid package with current FIND contract documents, technical specifications, and construction drawings that address the build out of the permanent DMMA facility.

We have based our scope of services and cost proposal on the following assumptions:

1. USACE will not require a permit for project construction.
2. FIND will coordinate the draft institutional controls with Estuary Corporation.
3. Based on review of available sediments for Reach VII, a test evaluating the settling behavior of fine-grained sediment is unnecessary. Regulatory agencies will not require any sediment sampling or updated grain size or chemical analysis for Reach VII sediments.
4. Groundwater quality compliance sampling data, collected as part of the Dee Dot Ranch Sludge Disposal Area No. 2 consent order and provided by FDEP, will provide the necessary

ATTACHMENT A

- data to develop the dewatering plan.
5. During our August 14 meeting, FDEP indicated that an updated natural resources survey was not required as part of the ERP application; therefore, estimated project costs do not include a natural resources survey. *However, an August 22 field reconnaissance revealed new manmade wetland communities (as compared to the 1998 pre-construction wetland report) in the disturbed area of the Dee Dot Sludge Disposal Area No. 2. The wetlands formed as a result of required site remediation activities, specifically removal of contaminated soil creating ditches and other small depressions. It is assumed the agencies will not assert jurisdiction over these manmade wetlands; however, we will discuss at the on-site ERP pre-application meeting.*
 6. The site raises no archeological concerns (confirmed by an earlier inquiry to the Florida Department of State, Division of Historical Resources).
 7. The weir structure and associated deck platform will remain without modification for operation of the full-size permanent DMMA facility.
 8. FIND will remove the dredged material from the previous site use before or during construction of the expanded DMMA.
 9. No known utilities exist on site.
 10. Estimate project costs do not include permit application fees or construction administration services.

Should any of these assumptions prove incorrect, we reserve the right to modify our scope and cost proposal, if necessary to ensure that we meet the expectations of the FIND.

– SCOPE OF SERVICES –

TASK 1 ENVIRONMENTAL PERMITTING

1.1 Pre-Application Meetings

Taylor Engineering will coordinate two separate pre-application meetings for the ERP and wastewater permit applications. The joint ERP pre-application meeting will occur on-site with staff from the FDEP and the USACE. During this on-site meeting, we will introduce the project to state and federal regulatory agency staff, discuss foreseeable permit application issues, and solicit agency recommendations concerning the content and format of the application materials. The wastewater permit pre-application meeting will occur at the northeast FDEP office in Jacksonville with wastewater staff and our lead permit reviewer for the ERP application. We will compile permit application packages based on feedback received during these meetings. Following completion of the pre-application meetings, Taylor Engineering will compile and submit meeting minutes to all attending parties.

1.2 Environmental Resource Permit Application

Based on data (natural resources, geotechnical, and survey) previously collected in the original and subsequent design of the DMMA, the site plan layout, and agency comments made during the pre-application meetings, Taylor Engineering will prepare and submit an ERP application to the FDEP. We will develop permit-level design drawings to include in the application package (Task 3). In addition to the signed and sealed permit drawings, the application will include narratives describing the (1) overall project and conceptual design, (2) location of on-site sensitive natural habitats, (3) best management practices and impact avoidance/minimization techniques, (4) natural resource impact analysis and mitigation design, and (5) construction methodology and schedule. The permit application package will specifically address all review criteria outlined in the Draft June 2007 FDEP ERP *Engineering Review Criteria/Information Needs for Dredged Material Management Areas*. Finally, this permit application

ATTACHMENT A

package will also include an update of the 2000 Management Plan to address FDEP's overriding concern — discussed during the August 14 meeting — about providing sufficient documentation that the water quality at the weir discharge will meet surface water standards as provided in 62-302, F.A.C.

1.3 Wastewater Permit Application

Based on concerns from FDEP generated from the proposed DMMA expansion over and into the remediated Dee Dot Sludge Disposal Area No. 2, Taylor Engineering will prepare and submit a wastewater permit application for the discharge of the water resulting from (1) the dewatering for site construction and (2) discharge of surficial groundwater into the ICWW during construction and use of the site. The permit application will supply a detailed dewatering plan and monitoring schedule that will provide assurance for meeting state surface water discharge criteria.

1.4 Responses to Requests for Additional Information

Following submission of the permit applications, the FDEP will likely respond with a Request for Additional Information (RAI). RAIs typically comprise a series of questions requiring additional explanation of the proposed project work. Accordingly, our cost estimate includes time (not to exceed a total of 150 man-hours) to respond to RAIs. If the permit application requires additional labor, field investigations, or laboratory tests to respond adequately to agency RAIs, we will submit a new cost proposal commensurate with the level of effort needed to satisfy agency requests. Taylor Engineering will provide all draft RAI responses to the FIND for review before submitting the final responses to the FDEP.

TASK 2 PRELIMINARY ENGINEERING DESIGN

In conjunction with previously developed documents and Task 1, Taylor Engineering will prepare preliminary engineering design documents sufficient for permit review by regulatory agencies. We will review all previously submitted Phase I and Phase II design documents for the DMMA DU-9 facility and update the site plan according to any modification in the site conditions or updated DMMA design policies.

2.1 Site Reconnaissance Visit

Taylor Engineering will visit the site at least once to examine the physical characteristics of the site as it relates to the overall design of the project.

2.2 ERP Engineering Review Criteria

This sub-task details each of the four elements required as part of the Draft June 2007 FDEP ERP *Engineering Review Criteria/Information Needs for Dredged Material Management Areas* memorandum.

Element 1 – Capacity and Settling Time for Meeting Water Quality Standards at the Discharge. To address the capacity criteria, Taylor Engineering will complete a revised site design with the goal of obtaining a balanced cut and fill earth volume (to address the volume of dredged material currently contained in the constructed DMMA on the northern property). This element also requires calculations demonstrating that the DMMA designed settling characteristics (for the Reach VII finest sediment fraction) will meet water quality standards. To address this criterion, we will submit calculations and supporting geotechnical data from previously collected sediment samples from ICWW Duval Reach VII.

ATTACHMENT A

Element 2 – Dike Stability. This element includes (1) geotechnical site investigation, (2) soil testing, (3) stability/seepage analysis, (4) design safety factor determination, (5) site preparation specification, (6) dike construction material identification, (7) water level control design, (8) seepage control design, (9) minimum freeboard determination, (10) construction methods specifications, and (11) construction quality assurance/quality control. Our scope of services, in combination with previously conducted design work and geotechnical site investigations, addresses items 1 – 2; our submittal of standard guide specifications addresses items 5, 6, 10, and 11. Addressing items 3, 4, 7, 8, and 9 (i.e., stability/seepage analysis, design safety factor determination, water level control design, seepage control design, and minimum freeboard determination) require a written narrative of previous design components in a format currently acceptable to FDEP. Taylor Engineering will prepare a memorandum to detail the stability/seepage analysis, design safety factors, excess capacity requirements, storage capacity, structure height, volume recovery, location and elevation of control structures, and a provision for a hazard classification analysis. The site-specific design details for seepage control (e.g., toe drain) for the DU-9 facility will remain consistent with the original design.

Element 3 – Stormwater Quality and Prevention of Off-site Flooding. This sub-task involves evaluation of the stormwater quality (in accord with St. John's River Water Management District [SJRWMD] F.A.C. 40C-42.026) and quantity (based on a 25-year, 24-hour rainfall event). Taylor Engineering will provide FDEP a memorandum detailing the previously designed site drainage and size pipes, culverts, inlets, and ditches as necessary to provide adequate drainage.

Element 4 – Additional Specific Conditions. Remaining ERP evaluation conditions include submittal of an operation and maintenance plan. This plan — an outline of the site's management activities before, during, and after dredging activities — will assure regulatory agencies of the establishment and maintenance of a vegetative cover, dike safety inspection program, and post-dredging operations.

Under this sub-task, we will update the existing 2000 Management Plan to current operation and maintenance design standards. Specific revisions to the Management Plan will include (1) operational guidelines for the contractor to follow before, during, and immediately after dredging; (2) inspection criteria designed to ensure the stability and safety of the site's containment dikes; (3) maintenance criteria for the dike's vegetative cover; and (4) per the August 14 meeting, sufficient documentation that the water quality at the weir discharge will meet surface water standards as provided in 62-302, F.A.C.

2.3 Permit Drawings

We will prepare updated digital permit drawings, incorporating the constructed (northern cell) DMMA, expanded DMMA, and permanent buried pipeline feature, for the various site elements. The permit set will include photo-based sheets depicting the project areas. These drawings will provide plan, cross-sectional, and detail views of the DMMA and its return water control structure as well as any necessary seepage, drainage, and erosion control features. We will provide signed and sealed permit drawings in appropriate hardcopy format and in digital (PDF) format.

TASK 3 FINAL DESIGN AND BID DOCUMENTS

3.1 Final Design

Building on the regulatory permitting process (Task 1), preliminary design efforts (Task 2), and previously developed design documents, Taylor Engineering will complete the final engineering design

ATTACHMENT A

necessary to construct the DMMA and calculate final earthwork volumes associated with the overall site plan. The primary objective of this task is associated with deconstruction of the southern wall of the DMMA and in-place slurry wall (to the grade of the bottom elevation of the DMMA), vertical and horizontal expansion of the northern DMMA, and overall expansion of the DMMA to the boundaries of the permanent DMMA facility and operational storage capacity requirement.

3.2 Construction Documents

We will prepare updated digital construction drawings for the various site elements. Construction drawings will provide plan, cross-sectional, and detail views of the DMMA and its return water control structure (in terms of temporarily removing it and restoring the timber weir platform as part of the DMMA vertical and horizontal expansion) as well as any necessary seepage, drainage, and erosion control features. Taylor Engineering will provide construction drawings in appropriate hard-copy format and in digital (PDF) format, as well as record drawings signed and sealed by a Florida Registered Professional Engineer. We will update the Division 00 and 01 contract documents (Contract Documents) with recent attorney approved documents and will prepare Division 02 and higher contract documents (Technical Specifications) for construction of the project. We will follow the Engineer's Joint Contract Documents Committee (EJCDC) and Construction Specification Institute (CSI) standards and guidelines in preparing the specifications.

3.3 Opinion of Probable Cost

We will prepare an opinion of probable cost to construct the DMMA DU-9 facility.

3.4 Bid Package Preparation

We will prepare a bid schedule with estimated quantities for all bid items. In preparation for project bidding and bid administration, Taylor Engineering will develop a digital bid document package including digital copy of the final drawings and specifications for FIND to advertise the bid and upload onto its FTP site. We will provide FIND with a record set of drawings sealed by a Florida Registered Professional Engineer.

3.5 Bid Administration

Taylor Engineering will advertise the project (per instruction from FIND), help FIND administer the bidding process, and assist in selecting the contractor. We will remain available at our Jacksonville offices to clarify and interpret project documents and prepare addenda, if required. We will coordinate and attend a pre-bid meeting to answer questions concerning elements of the project for which Taylor Engineering is responsible. We will assist with reviewing the bids received and provide FIND with our recommendation for contractor selection. This work includes reviewing the submitted bid documents, checking references of the responsive bidders, and preparing and transmitting a written recommendation for contractor selection. Taylor Engineering will limit its review and recommendations to engineering and technical issues. FIND will take responsibility for legal review and evaluation of the contractor's financial condition, business licenses or authorizations, bonding, contractual requirements, and any other non-engineering or non-technical information.

ATTACHMENT A

- ESTIMATED SCHEDULE -

| No. | Task | Months from Notice to Proceed | | | | | | | | |
|-----|--------------------------------|-------------------------------|---|---|---|---|---|---|---|---|
| | | 1 | 2 | 3 | 4 | 5 | 6 | 7 | 8 | 9 |
| 1 | Environmental Permitting | | | | | | | | | |
| 2 | Preliminary Engineering Design | | | | | | | | | |
| 3 | Final Design and Bid Documents | | | | | | | | | |

ATTACHMENT B

TAYLOR ENGINEERING, INC.
COST SUMMARY BY TASK
P2014-112: PERMITTING AND FINAL ENGINEERING DESIGN FOR DMMA DU-9

TASK 1: ENVIRONMENTAL PERMITTING

| <i>Labor</i> | Hours | Cost (\$) | Task Totals |
|---|-------|-----------|---------------------|
| President | 2.0 | 460.00 | |
| Vice President | 6.0 | 1,110.00 | |
| Senior Advisor | 12.0 | 2,220.00 | |
| Director | 86.0 | 13,330.00 | |
| Senior Professional | 40.0 | 5,400.00 | |
| Project Professional | 42.0 | 4,410.00 | |
| Staff Professional | 80.0 | 6,880.00 | |
| Editor | 6.0 | 594.00 | |
| Senior Technical Support | 40.0 | 4,120.00 | |
| Administrative | 24.0 | 1,248.00 | |
| Total Man-Hours | 338.0 | | |
| Labor Cost | | | 39,772.00 |
| <i>Non-Labor</i> | Units | Cost (\$) | |
| 1.1 ERP Pre-Application Mtg (on-site)_MILES | 30.0 | 16.80 | |
| Wastewater Pre-Application Mtg (FDEP)_MILES | 30.0 | 16.80 | |
| Non-Labor Cost | | 33.60 | |
| Fee @ 10.0% | | 3.36 | |
| Total Non-Labor Cost | | | 36.96 |
| Total Task 1 | | | \$ 39,808.96 |

TASK 2: PRELIMINARY ENGINEERING DESIGN

| <i>Labor</i> | Hours | Cost (\$) | Task Totals |
|--|-------|-----------|-------------|
| Senior Advisor | 15.0 | 2,775.00 | |
| Director | 44.0 | 6,820.00 | |
| Senior Professional | 64.0 | 8,640.00 | |
| Staff Professional | 80.0 | 6,880.00 | |
| Editor | 8.0 | 792.00 | |
| Senior Technical Support | 68.0 | 7,004.00 | |
| Administrative | 23.0 | 1,196.00 | |
| Total Man-Hours | 302.0 | | |
| Labor Cost | | | 34,107.00 |
| <i>Non-Labor</i> | Units | Cost (\$) | |
| 2.1 Site Reconnaissance Visit (KAK)_MILES | 280.0 | 156.80 | |
| 2.1 Site Reconnaissance Visit (LSB)_MILES | 30.0 | 16.80 | |
| 2.1 Site Reconnaissance Visit (KAK)_PER DIEM | 1.0 | 15.00 | |

ATTACHMENT B

P2014-112: PERMITTING AND FINAL ENGINEERING DESIGN FOR DMMA DU-9

| | |
|----------------------|---------------------|
| Non-Labor Cost | 188.60 |
| Fee @ 10.0% | <u>18.86</u> |
| Total Non-Labor Cost | <u>207.46</u> |
| <i>Total Task 2</i> | <u>\$ 34,314.46</u> |

TASK 3: FINAL ENGINEERING DESIGN AND BID DOCUMENTS

| <i>Labor</i> | Hours | Cost (\$) | Task Totals |
|------------------------------------|-------|-----------------|---------------------|
| Vice President | 8.0 | 1,480.00 | |
| Senior Advisor | 11.0 | 2,035.00 | |
| Director | 29.0 | 4,495.00 | |
| Senior Professional | 136.0 | 18,360.00 | |
| Staff Professional | 199.0 | 17,114.00 | |
| Senior Technical Support | 130.0 | 13,390.00 | |
| Administrative | 26.0 | <u>1,352.00</u> | |
| Total Man-Hours | 539.0 | | |
| Labor Cost | | | 58,226.00 |
| <i>Non-Labor</i> | Units | Cost (\$) | |
| 3.5 Bid Administration_Advertising | 1.0 | 3,000.00 | |
| Fee @ 10.0% | | <u>300.00</u> | |
| Total Non-Labor Cost | | | <u>3,300.00</u> |
| <i>Total Task 3</i> | | | <u>\$ 61,526.00</u> |

Project Total \$ 135,649.42

**FLORIDA INLAND NAVIGATION DISTRICT
DREDGED MATERIAL MANAGEMENT AREA DU-9
ST JOHNS COUNTY, FLORIDA**

**PRE-APPLICATION MEETING SUMMARY
10:30 AM AUGUST 14, 2014**

- ATTENDEES:** Lori Brownell (Taylor Engineering), Mark Crosley (FIND), Matthew Kershner (FDEP), Merrilee Palcic (FDEP), Aaron Sarchet (FDEP), Junhong Shi (FDEP), David Stites (Taylor Engineering)
- OBJECTIVES:** Obtain clear direction and feedback from FDEP regarding (1) need for modification of existing permit or acquisition of new permit; (2) impact of conditional closure of Dee Dot Sludge Disposal Area No. 2 on the construction and operation of DMMA DU-9.
- ATTACHMENTS:** A – Sign-in sheet
B – Pre-application meeting handouts

PRE-APPLICATION SUMMARY:

1. INTRODUCTION

The FIND obtained a FDEP permit for construction of a ±94-acre DU-9 DMMA in 2000. In the same year, during preparatory construction activities (i.e., relocation of gopher tortoises), the USACE discovered contamination in the central portion of the site. Since this time, Estuary Corporation — identified as the previous and surrounding property owner — has undertaken on-site soil and groundwater remediation activities. In 2004, due to a need for the DMMA, FIND obtained a modified permit to construct a smaller ±34-acre DMMA (including a separating slurry wall) north of the contaminated area. The FIND constructed this DMMA in 2006.

Nearly 14 years after identifying the on-site contamination, FDEP issued a conditional closure letter to Estuary Corporation that requires “*institutional controls on the property including, but may not be limited to, restrictions that would prohibit the withdrawal and use of surficial groundwater (i.e., less than or equal to 60 feet below land surface).*” Given this, FIND would like to reinstate the original permit for the construction of the ±94-acre DMMA and, due to the above-noted limitations, obtain feedback from FDEP about the any resulting construction or operation restrictions of the DMMA.

2. DEE DOT SLUDGE DISPOSAL AREA NO. 2

Given the proposed DMMA expansion over and into the remediated area, FDEP relayed that the major issues for a permit issuance centered on construction and operational assurances stemming from

- (1) site dewatering for construction and
- (2) displace and discharge of surficial ground water into the ICWW during construction and use of the site (since construction would result in the bottom of the DMMA intersecting the seasonal high groundwater table and the DMMA use would fill and displace any exposed [including seepage] ground water).

To address Item (2), FIND shall submit a report, as part of the new ERP application (discussed below in “*Previously Issued Permits*”) that includes study, design and operational control to provide reasonable assurance that water quality at the weir discharge will meet surface water standards as provided in 62-302, F.A.C.

FLORIDA INLAND NAVIGATION DISTRICT
DREDGED MATERIAL MANAGEMENT AREA DU-9
PRE-APPLICATION MEETING SUMMARY

Given this, FDEP will require, in addition to an ERP permit, a separate dewatering permit from the wastewater group. Mr. Kershner stated that he would introduce Taylor Engineering, along with the proposed project, to the wastewater group (Mr. Jeff Martin and Mr. Deung Vo) via e-mail. Ms. Shi recommended a separate pre-application meeting with the wastewater group, which she would attend, if requested. Lastly, as part of the ERP conditions and assurances for meeting state surface water criteria, FDEP would require sampling at the DMMA weir prior to discharge into the ICWW. Upon the result of such study, FDEP will determine the monitoring schedule. FDEP requested that we provide a draft of specific conditions regarding compliance sampling as part of the review. To assist with the development of the dewatering plan, Ms. Merrilee Palcic will also forward to Ms. Lori Brownell the link to the Oracle database with the latest sampling reports from the site cleanup monitoring wells. These data should help identify the expected groundwater contaminant concentrations at the depths to which dewatering would occur and subsequently help with the overall design of the dewatering system and sampling plan.

3. PREVIOUSLY ISSUED PERMITS

Based on outstanding concerns related to the conditional closure of the Dee Dot Sludge Disposal Area No. 2, surficial groundwater use restrictions, and events surrounding the operational error and dredged material release at DMMA SJ-14, FDEP will require a new ERP application. Other than those modifications already permitted with the permanent buried line (FDEP Permit No. 55-129250-003-EG), Taylor Engineering indicated that they do not expect to modify the DMMA design from the original 2000 permit. The in-place discharge system also includes a master shutoff valve at the downstream side of the weir, similar to the valve installed at DMMA SJ-14. Mr. David Stites also stated that the construction of the existing DMMA on the north end of the property also included a mitigation area for all site impacts identified in the original design, which occurred on the north end of the project area and were associated with construction of the existing DMMA. After three years of post-construction monitoring, the FDEP deemed the mitigation area successful. Mr. Aaron Sarchet indicated that he would review the remaining on-site wetlands, as identified by the USACE in 1998, and that an updated natural resources survey was not required as part of the ERP application.

4. MILESTONE SUMMARY

FIND

- FIND will coordinate the draft institutional controls with Estuary Corporation.

TAYLOR ENGINEERING

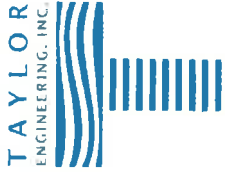
- Ms. Lori Brownell will draft, for FDEP review, a dewatering and sampling plan for pre- and post-construction (leading up to the first dredging event).
- Ms. Lori Brownell will schedule a pre-application meeting with the wastewater group and Ms. Shi.
- Ms. Lori Brownell will schedule a site visit with the ERP and wastewater permitting groups prior to submittal of the permit application(s).
- Ms. Lori Brownell will coordinate review of the draft institutional controls with FDEP.

FDEP

- Mr. Matthew Kershner will introduce Taylor Engineering and the project background to the wastewater permitting group (Mr. Jeff Martin and Mr. Deung Vo).
- Ms. Merrilee Palcic will provide an e-mail with a link to the latest monitoring data for the Dee Dot Sludge Disposal Area No. 2.

**FLORIDA INLAND NAVIGATION DISTRICT
DREDGED MATERIAL MANAGEMENT AREA DU-9
ST. JOHNS COUNTY, FLORIDA**

PRE-APPLICATION MEETING ATTENDEES
10:30 AM AUGUST 14, 2014

[illegible]

**FLORIDA INLAND NAVIGATION DISTRICT
DREDGED MATERIAL MANAGEMENT AREA DU-9
ST JOHNS COUNTY, FLORIDA**

**PRE-APPLICATION MEETING AGENDA
10:30 AM AUGUST 14, 2014**

MEETING CALLED BY: David Stites

REQUESTED ATTENDEES: Lori Brownell (Taylor Engineering), Mark Crosley (FIND), Matthew Kershner (FDEP), Richard Rachal (FDEP), Aaron Sarchet (FDEP), Junhong Shi (FDEP), David Stites (Taylor Engineering)

OBJECTIVES: Obtain clear direction and feedback from FDEP regarding (1) need for modification of existing permit or acquisition of new permit; (2) impact of conditional closure of Dee Dot Sludge Disposal Area No. 2 on the construction and operation of DMMA DU-9.

ATTACHMENTS: A – Location Maps
B – April 2000 FDEP Permit No. 55-0129250-001-EI
C – April 2004 FDEP Permit No. 55-0129250-002-EM
D – November 2008 FDEP Permit No. 55-0129250-003-EG
E – March 2014 Consent Order No. 01-0219

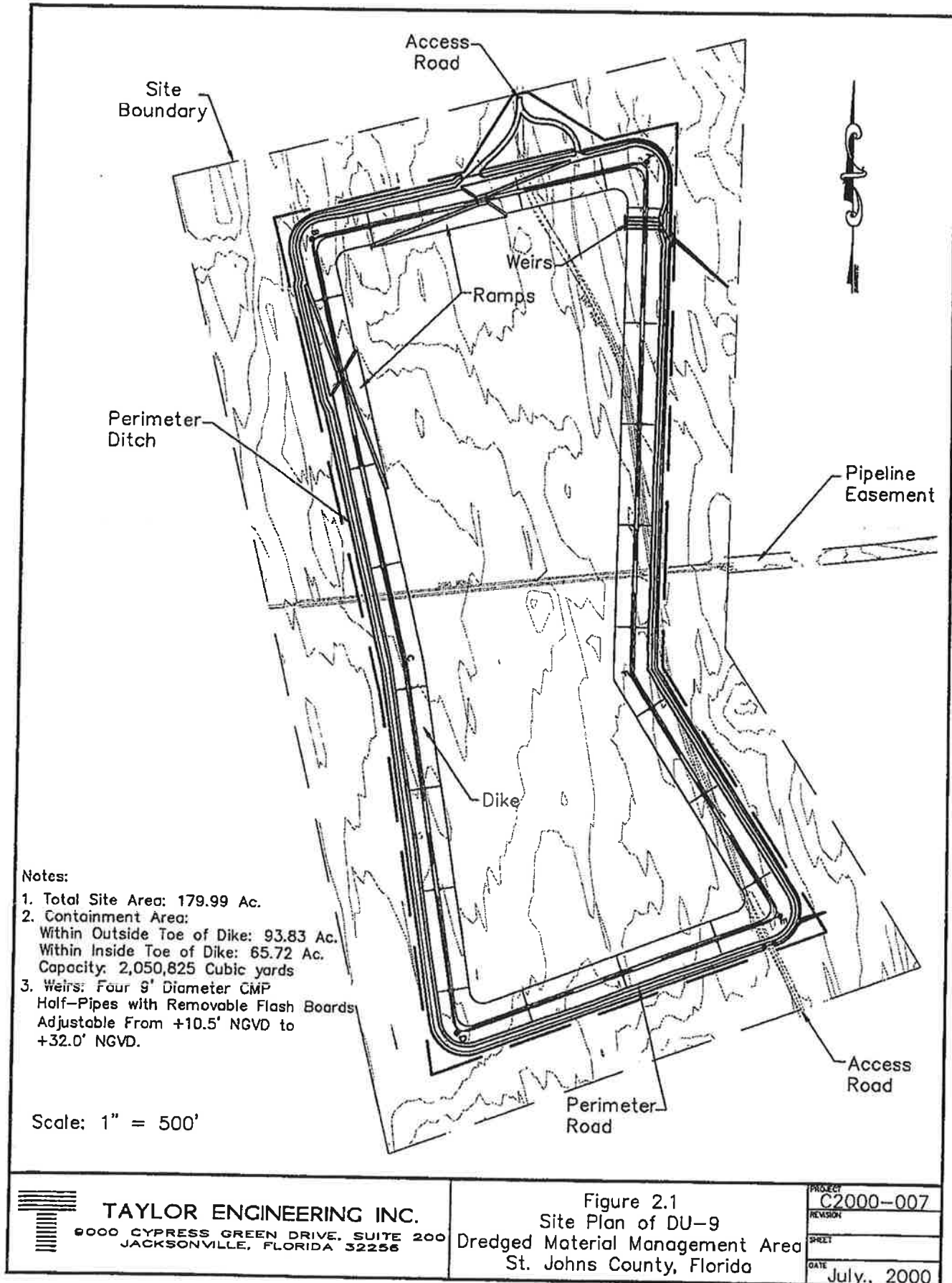
AGENDA:

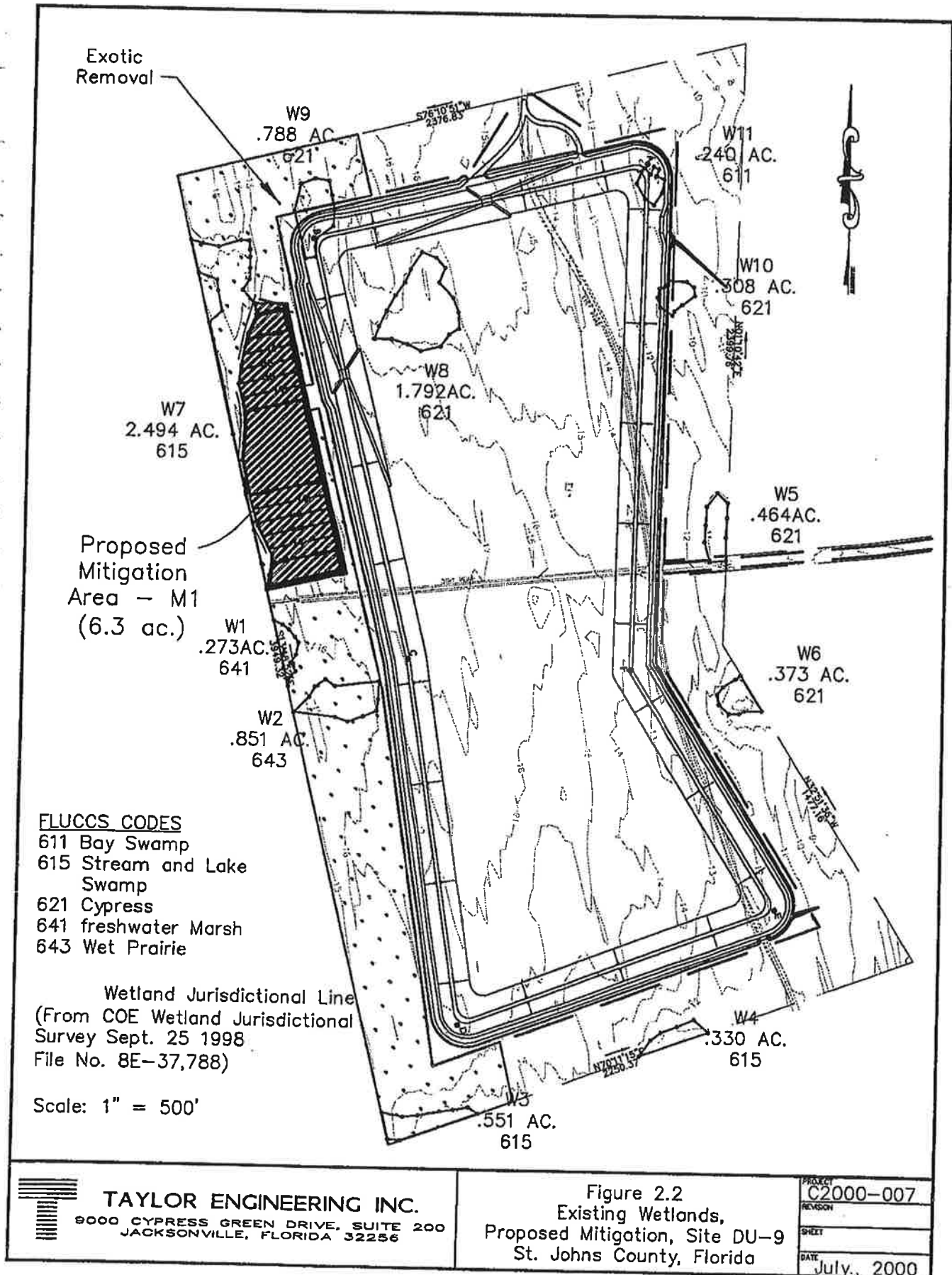
| Allotted Time (mins) | Topic | Facilitator |
|-----------------------------|---|--------------------|
| 15 | Introduction Meeting purpose, project location | Stites |
| 30 | Previously Issued Permits Current site status; determine need for modification of existing permit or acquisition of new permit | Stites & Brownell |
| 30 | Dee Dot Sludge Disposal Area No. 2 Current site status, conditional closure letter, impact of institutional controls on the construction and operation of DMMA DU-9 | Brownell & Stites |
| 15 | Milestone Summary | Brownell |

**FLORIDA INLAND NAVIGATION DISTRICT
DREDGED MATERIAL MANAGEMENT AREA DU-9
ST JOHNS COUNTY, FLORIDA**

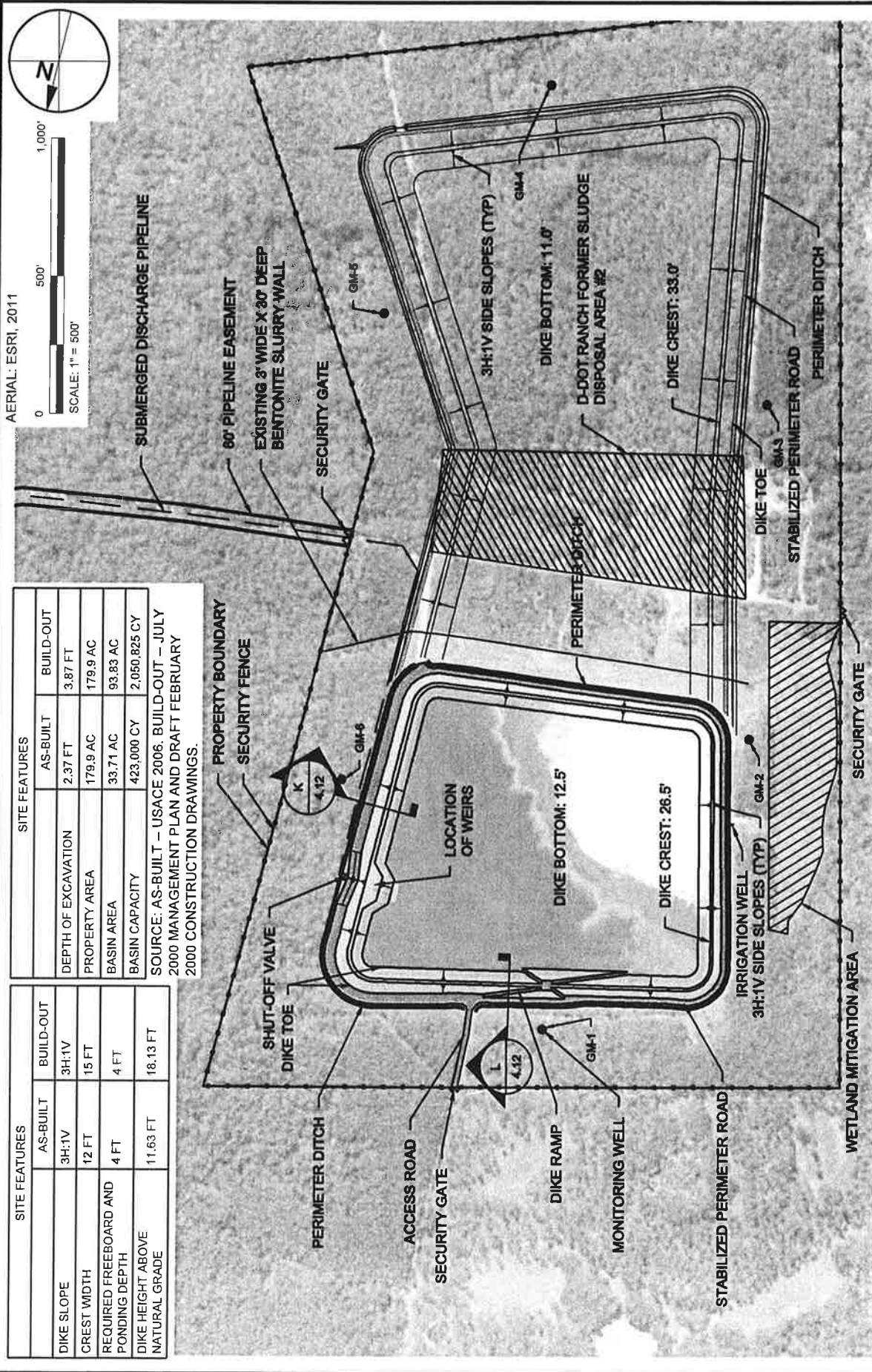
ATTACHMENT A

LOCATION MAPS





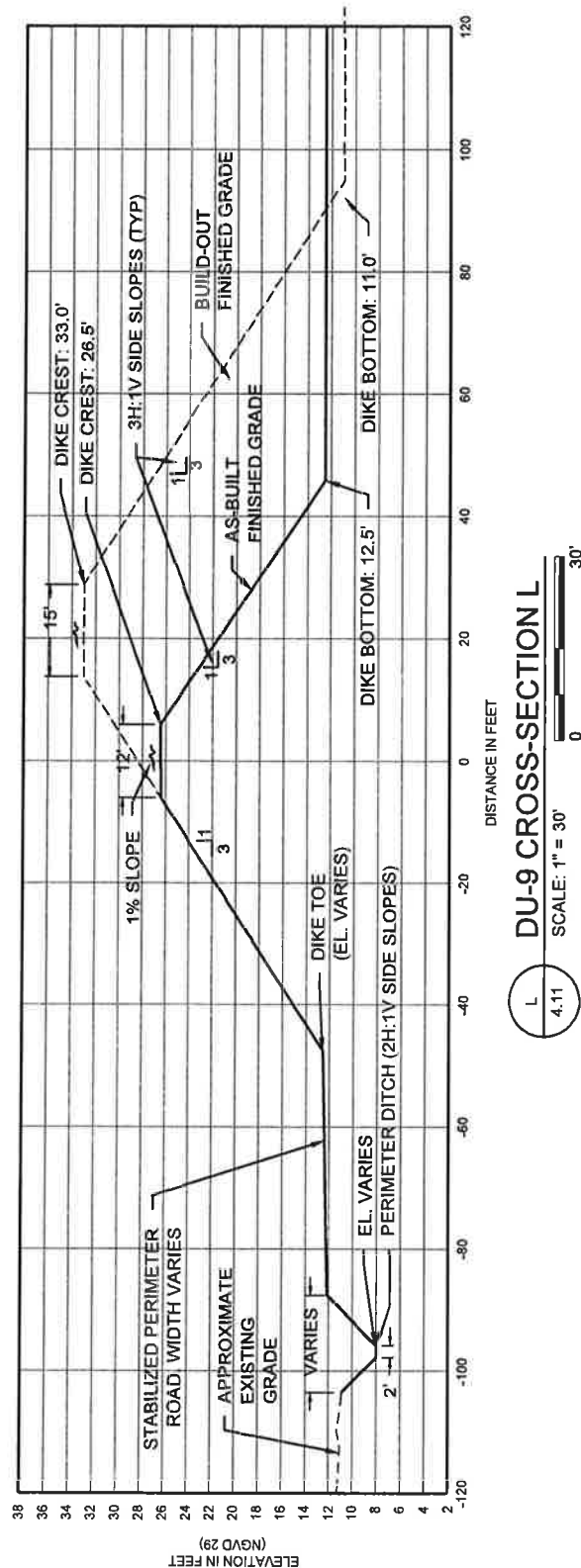
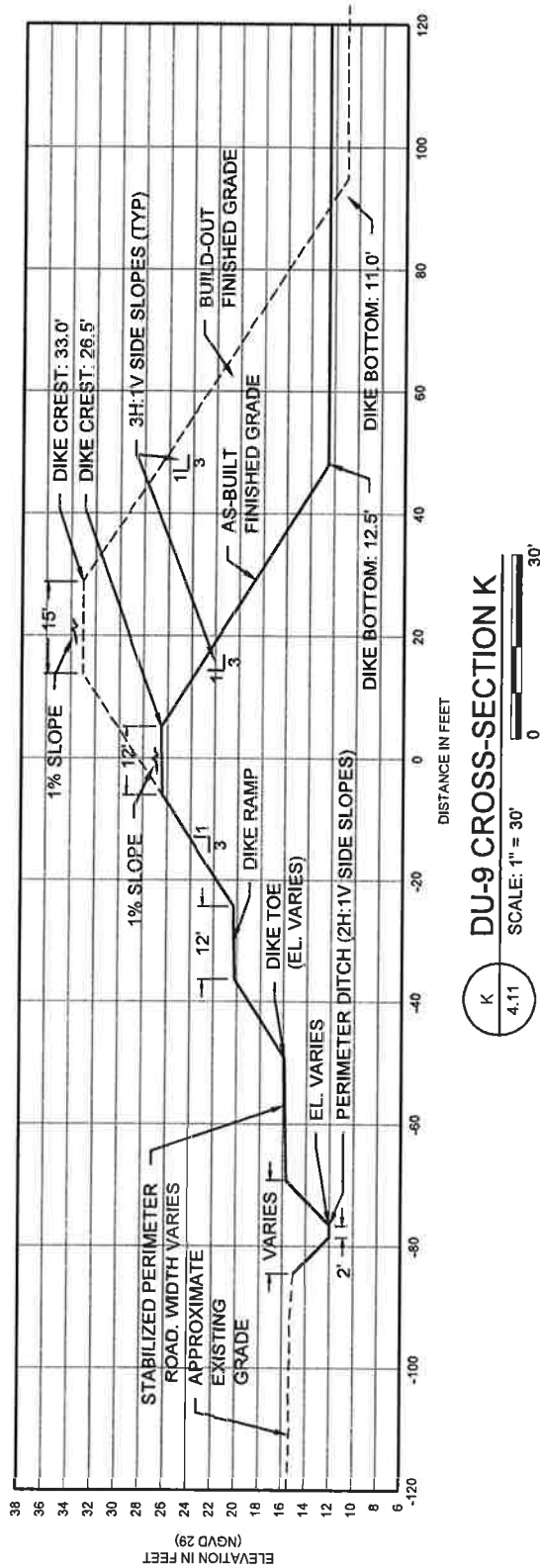
ATTACHMENT C



TAYLOR ENGINEERING INC.
10151 DEERWOOD PARK BLVD.
BLDG. 300, SUITE 300
JACKSONVILLE, FL 32256
CERTIFICATE OF AUTHORIZATION # 4515

FIGURE 4.11
DMMA DU-9 PLAN VIEW
INTRACOASTAL WATERWAY
DUVAL COUNTY, FLORIDA

| PROJECT | C2013-031 |
|----------|-----------|
| DRAWN BY | AF |
| SHEET | 16 of 17 |
| DATE | JUNE 2014 |



TAYLOR ENGINEERING INC.
 10151 DEERWOOD PARK BLVD.
 BLDG. 300, SUITE 300
 JACKSONVILLE, FL 32256
 CERTIFICATE OF AUTHORIZATION # 4815

FIGURE 4.12
 DMMA DU-9 SECTION VIEW
 INTRACOASTAL WATERWAY
 DUVAL COUNTY, FLORIDA

| | |
|----------|-----------|
| PROJECT | C2013-031 |
| DRAWN BY | AF |
| SHEET | 17 of 17 |
| DATE | JUNE 2014 |



City of Miami Application to FIND's Small Scale Spoil Island Restoration & Enhancement Grant

I. Project Title: Spoil Island "C" ADA Compliant Path from Floating Dock to Tiki Shelter

II. Contact Information:

Jeovanny Rodriguez, Assistant Director, Capital Improvement & Transportation Programs
444 S.W. 2nd Ave., 8th Floor
Miami, FL 33130-1910
(305)416-1225
jeovannyrodriguez@miamigov.com

III. Project Location: Biscayne Bay Spoil Island C

Spoil Island C is within the City of Miami Dinner Key Marina area and adjacent to the Atlantic Intercoastal Waterway and in the Florida Inland Navigational District area.

IV. Project Description/ Previous Actions Related to Project

Spoil Island C, consisting of public land owned by the City of Miami and improved via trails, signage and a trail map describing the flora and fauna on the island and in the water is in need of further enhancement to encourage its use by the public during operational daytime hours. The Florida Inland Navigation District (FIND) previously provided a grant to the City of Miami for placement of a tiki shelter on the island.

The project will consist of the construction of an American with Disabilities Act (ADA) compliant path that extends from the floating dock to the two-story ADA tiki shelter on Spoil Island C at Dinner Key.

V. Materials

The materials for the project will consist of hard-packed crushed limestone or similar material.

VI. Objective

The objectives of the proposed project are to:

- Create an accessible path that allows disabled individuals to access the ADA tiki shelter.
- Increase the time the public (**including disabled persons**) spends on the island.
- Continue benefitting from previously FIND-funded efforts and DERM efforts to restore the island and make it more accessible to the public (**including disabled persons**) for boating and swimming.



City of Miami Application to FIND's Small Scale Spoil Island Restoration & Enhancement Grant

These objectives do not conflict with any federal regulatory and easement agreements, state regulatory and management agreements, and local intergovernmental and regulatory agreements.

VII. Personnel/Sub-contractors

If approved, the City of Miami's Capital Improvement and Transportation Programs (CIPT) will provide oversight for the construction of the path. CIPT will follow the City's procurement procedures to solicit sub-contractors at a later date. The City will execute a work order for professional services with the appropriate cost-effective sub-contractor to construct the path from the floating dock to the tiki shelter.

VIII. Timeline

Work will be completed within 90 days of the execution of the funding agreement and continue for the duration of the contract as identified in the Project Timeline below.

IX. Five year maintenance plan

The City of Miami Parks and Recreation Department's staff will maintain the property.



City of Miami Application to FIND's Small Scale Spoil Island Restoration & Enhancement Grant

X. PROJECT COST ESTIMATE (limited to 1 page)

Project Title: Spoil Island "C" ADA Compliant Path from Floating Dock to Tiki Shelter

Applicant: City of Miami

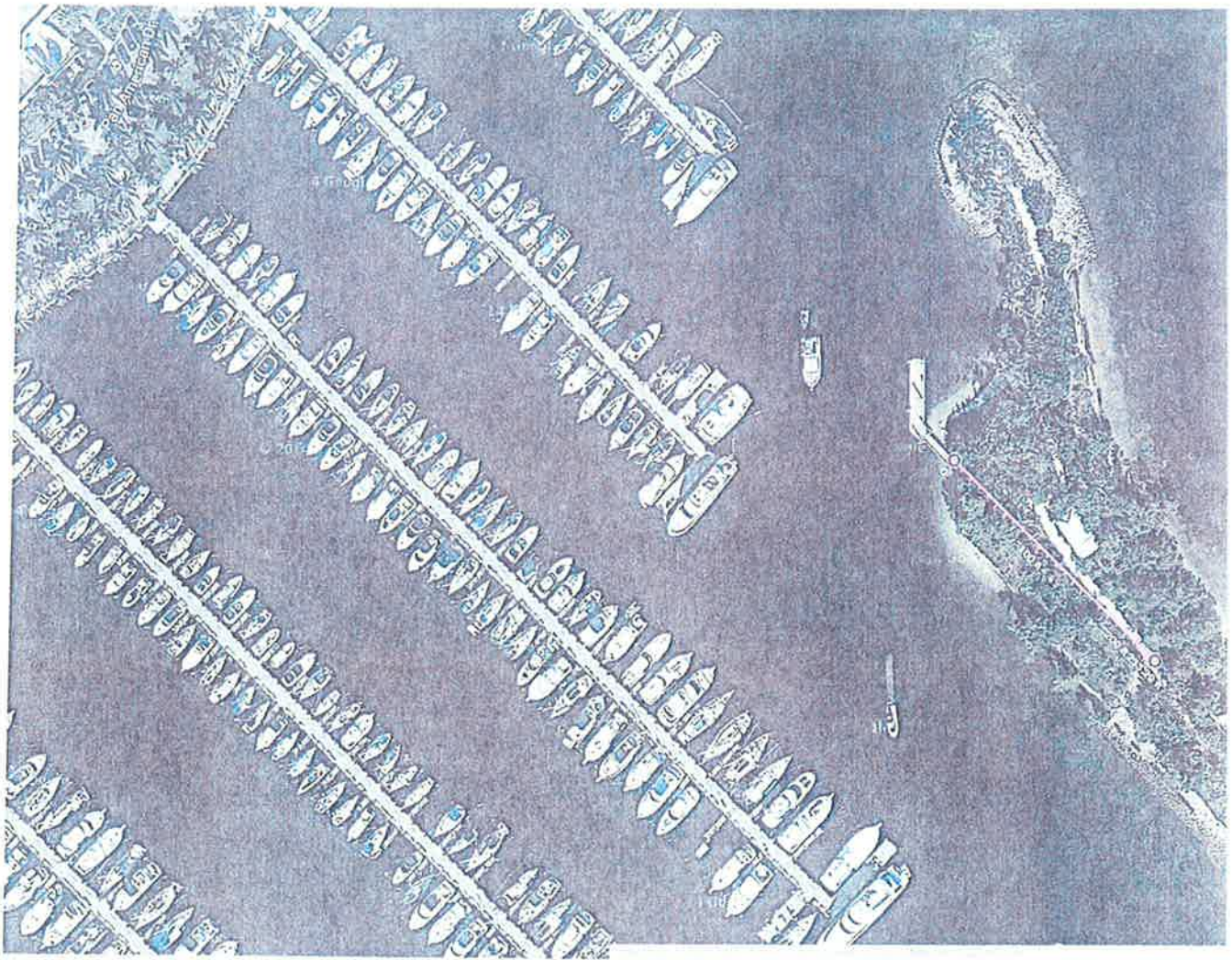
| Project Elements | FIND Cost | City Match |
|---|------------------|-------------------|
| (1) Construction of path from floating dock to tiki shelter (Includes: materials, installation, labor costs, transportation, fuel, etc.) | \$7,500 | |
| City of Miami will provide 10% match | | \$750 |
| Totals | \$8,250 | |



City of Miami

Dinner Key Marina

d:\mxd\laena\dinnerkeymarina@8x11.mxd



The path from the dock towards the Tiki shelter/viewing area is 233'.



City of Miami Application to FIND's Small Scale Spoil Island Restoration & Enhancement Grant

I. Project Title: Spoil Island C Path and Public Access and Installation of Piling and Signs

II. Contact Information:

Jeovanny Rodriguez, Assistant Director, Capital Improvement & Transportation Programs

444 S.W. 2nd Ave., 8th Floor

Miami, FL 33130-1910

(305)416-1225

jeovannyrodriguez@miamigov.com

III. Project Location: Biscayne Bay Spoil Island C

Spoil Island C is within the City of Miami Dinner Key Marina area and adjacent to the Atlantic Intercoastal Waterway and in the Florida Inland Navigational District area.

IV. Project Description/ Previous Actions Related to Project

Spoil Island C, consisting of public land owned by the City of Miami and improved via trails, signage and a trail map describing the flora and fauna on the island and in the water is in need of further enhancement to encourage its use by the public during operational daytime hours. The Florida Inland Navigation District (FIND) previously provided a grant to the City of Miami for placement of a tiki shelter on the island.

The proposed project consists of the construction of a path and public access to a new swimming area. The area needs some debris removal, a designated pathway and easy water access for swimmers and snorkelers. The Fish and Wildlife Commission has permitted the installation of pilings and signs for a motor boat exclusion zone.

V. Materials

The materials for the project will consist of hard-packed crushed limestone or similar material.

VI. Objective

The objectives of the proposed project are to:

- Provide a designated area where visitors to the island can safely swim
- Increase the time the public spends on the island
- Continue benefitting from previously FIND-funded efforts and DERM efforts to restore the island and make it more accessible to boaters and swimmers.



City of Miami Application to FIND's Small Scale Spoil Island Restoration & Enhancement Grant

These objectives do not conflict with any federal regulatory and easement agreements, state regulatory and management agreements, and local intergovernmental and regulatory agreements.

VII. Personnel/Sub-contractors

If approved, the City of Miami's Capital Improvement and Transportation Programs (CIPT) will provide oversight for the construction of the path and creation of public access to the new swimming area. CIPT will follow the City's procurement procedures to solicit sub-contractors at a later date. The City will execute a work order for professional services with the appropriate cost-effective sub-contractor to construct the path and public access to the swimming area.

VIII. Timeline

Work will be completed within 90 days of the execution of the funding agreement and continue for the duration of the contract as identified in the Project Timeline below.

IX. Five year maintenance plan

The City of Miami Parks and Recreation Department's staff will maintain the property.



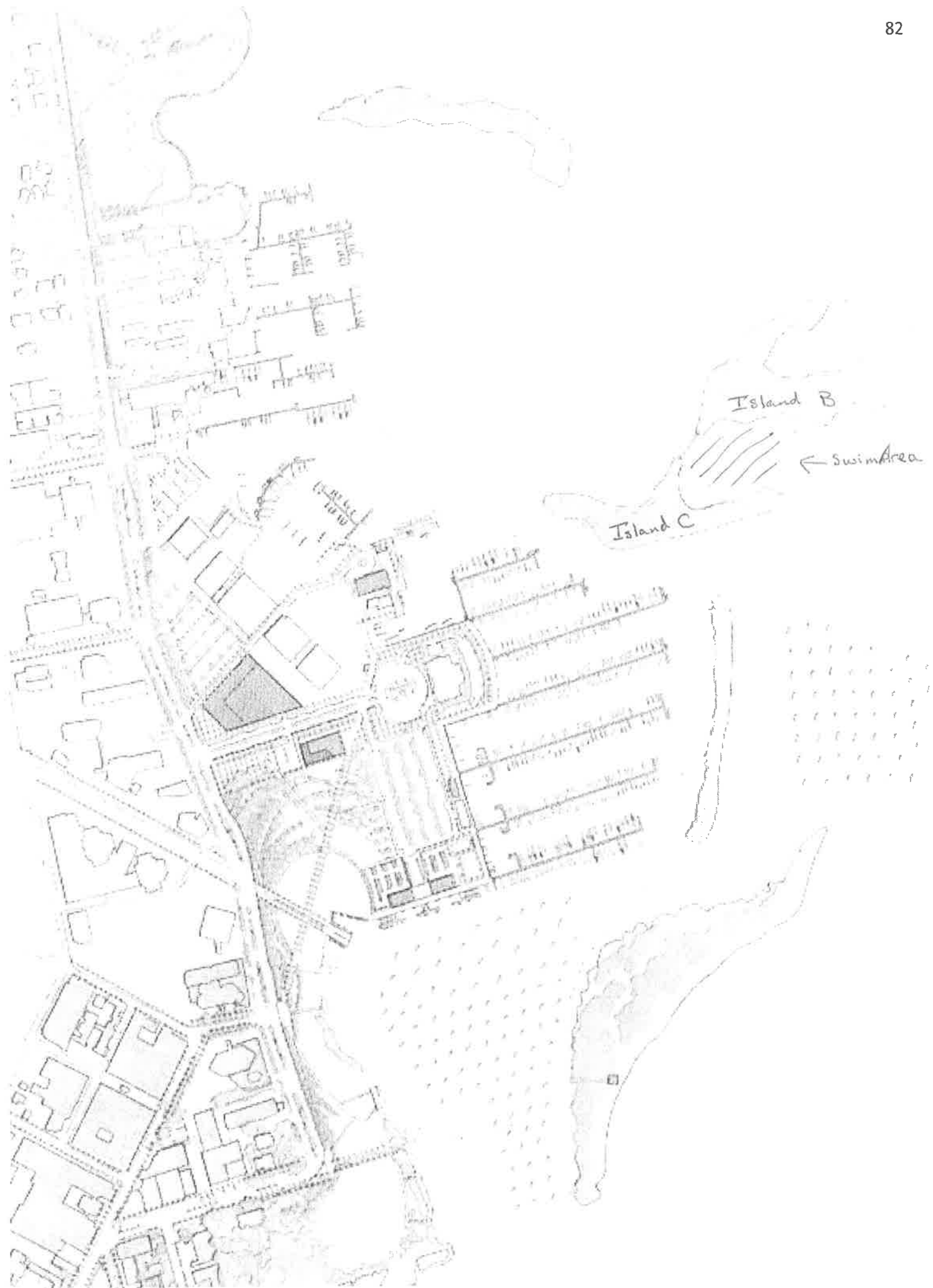
City of Miami Application to FIND's Small Scale Spoil Island Restoration & Enhancement Grant

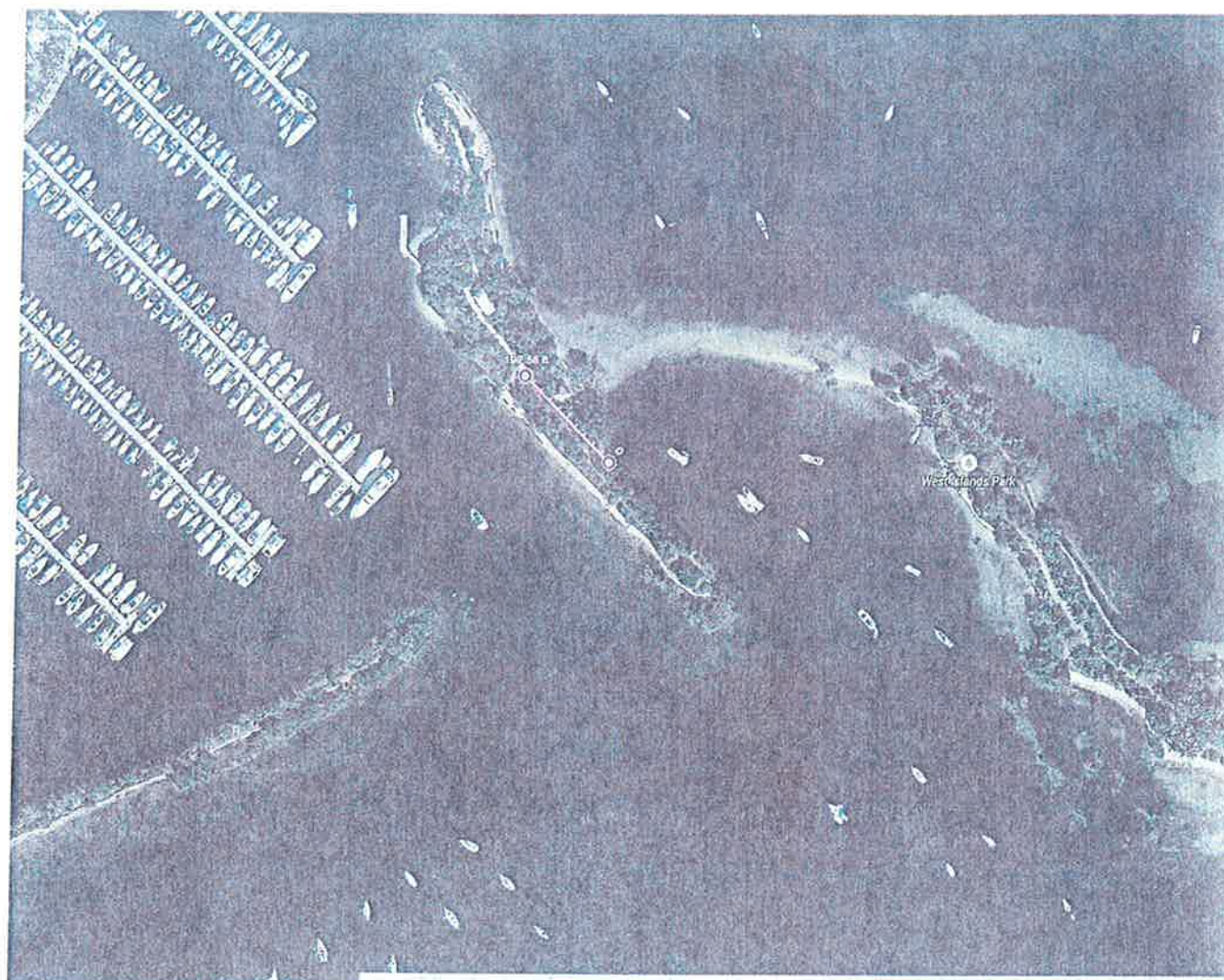
X. PROJECT COST ESTIMATE (limited to 1 page)

Project Title: Spoil Island C Path and Public Access and Installation of Piling and Signs

Applicant: City of Miami

| Project Elements | FIND Cost | City Match |
|---|------------------|-------------------|
| (1) Construction of path and public access and installation of piling and signs (Includes: materials, installation, labor costs, transportation, fuel, etc.) | \$7,500 | |
| City of Miami will provide 10% match | | \$750 |
| Totals | \$8,250 | |





The path from the Tiki shelter to the swimming beach
is 198'

DINNER KEY SPOIL ISLAND OCTOBER 2009

BISCAYNE
BAY

REGULATORY VESSEL
EXCLUSION BUOY (TYP.)

POLYPROPYLENE ROPE TETHERED
TO BUOYS AND UPLANDS

ISLAND
C

PROPOSED
PUBLIC SWIM AND
SNORKELING
AREA

ISLAND B

POLYPROPYLENE ROPE TETHERED
TO BUOYS AND UPLANDS

REGULATORY VESSEL
EXCLUSION BUOY (TYP.)

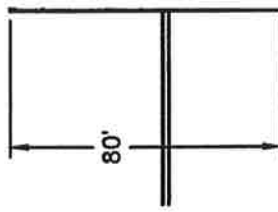
LEGEND



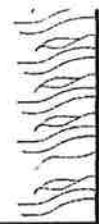
APPROXIMATE ISLAND
BOUNDARIES



SANDBAR



SPECIAL DOWN
WITH STORM
SHOCK ABSORBER



NORTH

ALCALDE & FAY

GOVERNMENT & PUBLIC AFFAIRS CONSULTANTS

September 2, 2014

MEMORANDUM**TO:** Mark Crosley, Executive Director**FROM:** Jim Davenport**SUBJECT: Federal Legislative Report**

FISCAL YEAR 2015 FUNDING FOR THE INTRACOASTAL WATERWAY

Congress returns on September 8th from a five week recess. Lawmakers will be in session for two weeks before recessing for another week beginning September 22nd. They are scheduled to return on September 29th for one more week of business before recessing for the entire month of October and first ten days of November to campaign.

At this time, none of the fiscal year (FY) 2015 appropriations bills have passed Congress, and it is looking likely that Congress will pass a continuing resolution to fund the government from October 1 – mid-December.

As you know, the House Energy and Water Appropriations Bill passed the House on July 10th. The bill includes \$600,000 for the Intracoastal Waterway, \$25.4 million for Navigation, \$45 million for Inland Waterways and \$42.5 million for Small, Remote or Subsistence Navigation.

The Senate bill is still awaiting markup by the Senate Appropriations Committee. It includes \$600,000 for the Intracoastal Waterway, \$20 million for Navigation Maintenance, \$40 million for Inland Waterways and \$35 million for Small, Remote Harbors and Channels.

While Congress continues its work on these bills, we will continue working with the House and Senate Energy and Water Appropriations to obtain sufficient funding for the IWW, navigation and inland waterways.

WATER RESOURCES DEVELOPMENT ACT LISTENING SESSIONS

The Army Corps of Engineers will continue holding listening sessions pertaining to the Water Resources and Reform Development Act (WRRDA) over the month of September. Each of the listening sessions will cover a different collection of the more important general program policy provisions of WRRDA. The remaining listening sessions are as follows:

- Category/Session III (September 10, 2014)
 - Levee Safety
 - Dam Safety
 - Regulatory (including 408)
- Category/Session IV (September 24, 2014)
 - Non-Federal Implementation
 - Water Supply and Reservoirs
 - Navigation

Each listening session will last two to three hours beginning at 2:00 p.m. Detailed instructions, including the meeting phone number and web link for each meeting, will be available on the U.S. Army Corps of Engineer Web site at: <http://www.usace.army.mil/Missions/CivilWorks/ProjectPlanning/legislativelinks.aspx>.

If you wish to submit written suggestions or recommendations for consideration by the Corps, send them to wrrda@usace.army.mil or to Mr. Bruce Carlson, HQUSACE, 441 G Street NW., Washington, DC 20314 by September 30, 2014.

For further information, you may also contact Mr. Bruce Carlson, Acting Chief, Planning and Policy, HQUSACE at WRRDA@usace.army.mil or (202) 761-4703.

Please contact us with any questions.