

**Board of
Commissioners Meeting
July 18, 2014**

PRELIMINARY AGENDA

FLORIDA INLAND NAVIGATION DISTRICT Board of Commissioners Meeting

9:00 a.m., Friday, July 18, 2014

**Hampton Inn & Suites
19 S. Second St., Fernandina Beach, 32034
Nassau County, Florida.**

Item 1. Call to Order.

Chair Chappell will call the meeting to order.

Item 2. Pledge of Allegiance.

Commissioner Williams will lead the Pledge of Allegiance to the United States of America.

Item 3. Roll Call.

Secretary Netts will call the roll.

Item 4. Consent Agenda.

The consent agenda items are presented for approval. Commissioners may remove any items from this agenda that they have questions on or would like the Committee to discuss in depth. Any items removed would then be included in the regular agenda in an order assigned by the Chair.

(Please see back up pages following the **COLOR** page)

RECOMMEND: Approval of the Consent Agenda.

- A) Waterway Clean-Up Program Funding Assistance Request to Keep Indian River Beautiful in the amount of \$5,000 for their 29th Annual Ocean Conservancy's International Waterway and Coastal Cleanup, Indian River County.
 - B) Small-Scale Derelict Vessel Removal Application, LagoonKeepers.org in the amount of \$8,025.00 for removal of three vessels, Palm Beach County, FL.
-

Item 5. Additions or Deletions.

Any additions or deletions to the meeting agenda will be announced.

RECOMMEND: Approval of a final agenda.

Item 6. Public Comments.

The public is invited to provide comments on issues that are NOT on today's agenda. All comments regarding a specific agenda item will be considered following Board discussion of that agenda item. *Please note: Individuals who have comments concerning a specific agenda item should fill out a speaker card and communicate with staff prior to that agenda item.*

Item 7. Board Meeting Minutes.

The minutes of the June meeting will be presented for review and approval at the Commissioner's August Board meeting.

Item 8. Comments from the U.S. Army Corps of Engineers.

U.S. Army Corps of Engineers (USACE) Intracoastal Waterway Project Manager, Ms. Shelley Trulock is scheduled to present an update on Atlantic Intracoastal Waterway projects and Work Order #40-2014-02 for additional dredging in Indian River Reach 1, Indian River County.

(Please see back up pages 8 - 13)

RECOMMEND: Approval of Work Order #40-2014-02 with the USACE in the Amount of \$1,800,000.00 for Additional Dredging of Indian River Reach 1.

Item 9. Staff Report on Nassau County Area Projects.

Staff will present a report on the District's Nassau County area projects.

(Please see back up pages 14 - 25)

**Item 10. Scope of Services and Cost Proposal for Professional Construction
Administration Services for DMMA DU-8 Pipeline Sleeve Construction, Duval
County, FL.**

At staff's request, Taylor Engineering has been working on the installation of a pipeline sleeve at the District's permanent Dredge Material Management Area DU-8 in Jacksonville, off of Atlantic Boulevard. On January 18, 2014, the Board approved the plans and specifications to install and bid this project. With this proposal, Taylor Engineering will provide construction administration services during the installation of this project. The construction and administration of this project has been previously budgeted. The proposal is a not to exceed proposal.

(Please see back up pages 26 - 36)

Item 10. (cont.)

RECOMMEND: Approval of a scope of work and cost proposal in the amount of \$16,974.00 from Taylor Engineering for DMMA DU-8 Pipeline Sleeve Construction Administration Services, Duval County, FL.

Item 11. **Post Dredging Project Submerged Aquatic Vegetative (SAV) Survey Scope of Services and Fee Quote for the Dania Cut-off Canal (DCC), Broward County, FL.**

The permit for the completed deepening of the Dania Cut-off Canal requires a post-project SAV survey for two growing seasons following the completion of the project. Staff requested a scope of work and fee quote from Dial Cordy & Associates, Inc., the contractor that performed the original SAV survey for this project.

The proposal includes the two years necessary to complete the permitting requirement.

(Please see back up pages 37 - 54)

RECOMMEND: Approval of a scope of services and fee quote from Dial Cordy & Associates, Inc. in the amount of \$26,355.39 to conduct a post-project benthic survey of the Dania Cut-off Canal each year for two growing seasons, as per permit requirements.

Item 12. **FY 2014-2015 Cooperative Assistance Program Application Rating and Evaluation.**

Staff has compiled the Commissioner's Rating and Evaluation Scores for the Cooperative Assistance Program (CAP) applications. Each CAP application received more than the required 35 points to further be considered for funding pursuant to our program rules. The construction project is in the process of obtaining permits. The Phase I project does not require permits this year.

(Please see back up page 55)

RECOMMEND: Approval of the final listing of FY 2014-2015 Cooperative Assistance Program applications for funding consideration at the final TRIM hearing

Item 13. **FY 2014-2015 Waterways Assistance Program Application Rating and Evaluation.**

Staff has compiled the Commissioner's Rating and Evaluation Scores for each Waterways Assistance Program Application. One application did not receive the minimum averaged score of

Meeting Agenda

July 18, 2014

Page 4

Item 13 cont.)

35, which is necessary to be further considered for funding pursuant to the District's program rules. However, Rule 66B-2.006(9) allows for reconsideration of this application if the majority of the

Commissioners evaluating the project rated the project equal to or exceeding 35 points, and two-thirds of the Commissioners vote for reconsideration of the application.

(Please see back up pages 56 - 58)

RECOMMEND: Approval of the final listing of FY 2014-2015 Waterways Assistance Program applications that scored over 35 points for further funding consideration at the final TRIM hearing, pending receipt of the required environmental resources permits or exemptions for those applicable projects.

Item 14. **Assistance Program Process.**

Staff would like to receive feedback from the Commissioners concerning this year's assistance program process. The back-up material contains staff's summary list of topics that may need further review. At the August meeting staff will present any proposed changes to the program rules that are warranted.

(Please see back up page 59)

Item 15. **Dredge Material Maintenance Area (DMMA) FL-3 Construction, Flagler County, FL.**

Previously, at our October 19, 2012 meeting, the Board approved a Work Order with Taylor Engineering to complete final engineering, design and bid document preparation for the construction of DMMA FL-3 in Flagler County. On February 14, 2014 at their regular meeting, the Board approved a Work Order with Taylor Engineering for construction administration services for DMMA FL-3.

Bids for construction of the site were advertised and received on July 1, 2014. Five qualified bids were received in response to the notice. The apparent low bidder, Harry Pepper & Associates was found to be qualified and responsive.

(Please see back up pages 60 - 66)

RECOMMEND: Approval of the low responsive bid from Harry Pepper and Associates in the amount of \$4,115,522.00 for construction of DMMA FL-3, Flagler County.

Meeting Agenda

July 18, 2014

Page 5

Item 16. Request for Hourly Rate Adjustment, District Attorney.

The District's Attorney, Mr. Peter Breton, has requested an hourly rate adjustment of \$20 per billed hour (for a total billed rate of \$200/hour). Mr. Breton has successfully represented the District since 2007. His current rate has remained unchanged since 2004 (initiated with our previous attorney Mr. Tom Sheehan), and this rate adjustment is consistent with the required standard fee schedule of the Florida Statutes. If approved, this rate will be effective beginning on Monday, July 21, 2014.

(Please see back up pages 67 - 68)

RECOMMEND: Approval of an hourly rate adjustment for the District Attorney's continuing services.

Item 17. Hugh Taylor Birch State Park 2013 Cooperative Assistance Program Agreement.

The Florida Department of Environmental Protection (FDEP) has missed the April 1, 2014 deadline for executing the 2013 approved Cooperative Assistance Program (CAP) grant agreement for the Hugh Taylor Birch State Park Boat Dock, Phase I (Project#DEP-13-78). Per Rule 66B-2.009(1), all assistance program (grant) agreements must be executed and returned within six (6) months of project funding approval. The unanticipated delay resulted from negotiations between FDEP and Broward County regarding language in a matching funds agreement. FDEP is requesting the Board waive the six-month requirement and allow staff to execute the 2013 project agreement at this time

(Please see back up page 69)

RECOMMEND: Approval to waive Rule 66B-2.009(1) with regards to approved CAP project Hugh Taylor Birch State Park Boat Dock, Phase I (Project#DEP-13-78), and permit staff to execute the 2013 agreement.

Item 18. Bid Process Approval for Removal of Dredge Material at Dredge Material Management Area (DMMA) SJ-14, St. Johns County, FL.

Florida Statute 253.03(10) requires a public entity to advertise for bid the removal of "materials dredged from state sovereignty tidal lands or submerged lands" when those materials are removed or sold to a private entity. The Navigation District has received an inquiry from a private interest adjacent to DMMA SJ-14 in St. Johns County to remove a significant quantity of material for a neighboring housing development.

Staff is of the opinion that removal of material from our sites "rejuvenates" the site and is a benefit to the District. Any proceeds received from the bid must be remitted to the Board of Trustees of the Internal Improvement Trust Fund (TIITF), unless the removal is completed "pursuant to a spoil site rejuvenation plan approved by the TIITF Board and the Board finds the material removal to be in the public interest.

Meeting Agenda

July 18, 2014

Page 6

Item 18. (cont.)

Staff would also like to pursue a long-term solution to this situation by formulating a "Spoil Site Rejuvenation Plan" with the assistance of our District Engineer and our Attorney, for approval by the TIITF.

(Please see back up pages 70 – 83)

RECOMMEND: Approval of a bid advertisement for dredged material removal at DMMA SJ-14, St. Johns County.

Item 19. **Finance and Budget Committee Report.**

The District's Finance and Budget Committee met prior to the Board meeting and will provide their recommendations concerning items on their agenda.

(Please see Finance and Budget Committee Agenda Package)

RECOMMEND: Approval of the recommendations of the District's Finance and Budget Committee.

Item 20. **Tentative FY 2014-2015 Budget and Tentative Millage Rate.**

The tentative FY 2014-2015 Budget is presented for review and approval. The tentative budget proposed by staff includes keeping our tax millage rate the same as last year's rate of 0.0345. This will generate approximately \$1,346,689 in additional revenues because of the estimated 6.4% increase in property values within the District. Note that the District has NOT raised the millage rate in over eight years.

The proposed millage rate of 0.0345 is considered a tax increase because of the additional revenues generated by property value increases. The "rolled back rate" is 0.0323, which would generate approximately the same or less tax revenue as last year and would not be considered a tax increase. If staff's recommendation is approved, a tax increase would be noticed for our final tax hearing.

The tentative budget needs to be approved for advertising to the public. Therefore, the millage rate cannot be increased after approval today, it can only be lowered. This provides an opportunity to lower the tax millage to the "rolled back rate" before the noticing of the final tax hearing. The budget can be amended at the two tax hearings that will be held.

Also included in the budget is a meeting schedule and work program for next fiscal year.

(Please see Finance and Budget Committee Agenda Package)

RECOMMEND Approval of the Tentative FY 2014-2015 Tentative Budget and Millage Rate of 0.0345.

Item 21. First FY 2014-2015 Tax and Budget Hearing.

The current meeting schedule calls for the first FY 2014-2015 Tax and Budget Hearing to be held on the evening of Friday, September 12th in Palm Beach County, in association with our September 13th Board meeting. Staff will provide a proposed meeting place and time for the hearing at the July Board meeting. The Final Tax and Budget Hearing would then become the stand alone tax hearing in late September.

RECOMMEND Approval of the location and time of the first FY 2014-2015 Tax and Budget Hearing on September 12, 2014.

Item 22. Washington Report.

The District's Washington DC government relations firm has submitted a status report on their activities on the District's federal issues.

(Please see back up pages 84 - 86)

Item 23. Additional Staff Comments and Additional Agenda Items.

Item 24. Additional Commissioners Comments.

Item 25. Adjournment.

If a person decides to appeal any decision made by the board, agency, or commission with respect to any matter considered at such meeting or hearing, he or she will need a record of the proceedings, and that, for such purpose, he or she may need to ensure that a verbatim record of the proceedings is made, which record includes the testimony and evidence upon which the appeal is to be based.



**US Army Corps
of Engineers**®
Jacksonville District

**IWW STATUS UPDATE
FIND Board of Commissioners Meeting
July 18, 2014**



WORK ACTIVITIES IN FY 14:

1. IWW: Indian River Reach 1 (Indian River County)
2. DMMA O-7 and DMMA O-23
3. MISC.



**US Army Corps
of Engineers**®
Jacksonville District

IWW STATUS UPDATE FIND Board of Commissioners Meeting July 18, 2014



AIWW = Atlantic Intracoastal Waterway Norfolk to St. Johns
IWW = Intracoastal Waterway Jacksonville to Miami (-12' and -10' projects)
DMMA = Dredge Material Management Area

1. WORK ACTIVITY: IWW Indian River Reach 1 (Indian River County)

CONTRACT AMOUNT: TBD

DESCRIPTION OF WORK: Development of plans and specifications for the IWW Indian River Reach 1 and procurement of the O&M dredging contract. Material from this reach is non beach quality and will be placed upland in the newly constructed DMMA IR-2. Preliminary estimates for shoaling quantities include 300,000 cy of material within Reach 1.

SCHEDULE (Tentative):

Submit Exemption Letters to FDEP:	26 Nov 2013A
Contract Advertisement Initiated:	31 July 2014
Bid Opening:	29 Aug 2014
Contract Award:	29 Sep 2014
NTP Issued:	30 Oct 2014
Mobilization Complete:	27 Nov 2014
Dredging Complete:	30 May 2014

FIND WORK ORDER: Work order for developing plans and specifications for Indian River Reach 1 was approved at the May 2013 FIND Board Meeting. Wire transfer of funds was completed 25 June 2013.

An additional work order was approved at the May FIND Board meeting in the amount of \$2,500,000 to fund the dredging contract. In addition to the \$2,500,000 in FIND contributed funds for the O&M dredging contract, \$1,000,000 in Federal funds will also be utilized for the contract. A second work order for O&M dredging will be presented which requests an additional \$1,800,000 in Contributed Funds from FIND. Details are shown below.

NAME OF CONTRACTOR: TBD

STATUS: Plans and specifications have been completed for O&M dredging of Indian River Reach 1. Due to an error in computing the quantity of material to be dredged out of this reach, a new cost estimate was required which has led to an increase to the cost of dredging Reach 1.

Details of the revised cost estimate:

- The original quantity anticipated was 100k cy, which is what the previous work order was based on (\$2,500,000 request in Contributed Funds from FIND, \$3,500,000 total anticipated cost).
- Due to this estimate not including all of Reach 1, only cut 1, a revised quantity was developed. The new estimated quantity of material to be dredged is 300k cy.
- Revised working level cost estimate is \$5,300,000 for 300k cy.
 - Current estimate: \$5,300,000 for 300k cy of material.
 - Previous estimate: \$3,500,000 for 100k cy of material.
 - More bang for our buck!
 - Provides for a clear channel within all of Reach 1.
 - The estimate was developed based on historical averages per cubic yard and comparisons made with similar projects.
- With the \$1,000,000 in Federal funding plus the \$2,500,000 approved at the May FIND Board meeting, this leaves a delta of \$1,800,000.
- Work order being presented requests \$1,800,000 in additional Contributed Funds from FIND for this additional 200k cy of material.



US Army Corps
of Engineers®
Jacksonville District

IWW STATUS UPDATE
FIND Board of Commissioners Meeting
July 18, 2014



2. WORK ACTIVITY: DMMA O-7 / DMMA O-23

CONTRACT AMOUNT: TBD

DESCRIPTION OF WORK: Finalization of plans and specifications and associated environmental coordination for DMMA O-7 and development of plans and specifications, permit and environmental coordination for DMMA O-23.

SCHEDULE: TBD

FIND WORK ORDER: N/A

NAME OF CONTRACTOR: TBD

STATUS: Through coordination with FIND Staff it has been requested that the Corps undertake completion of plans and specifications for DMMA O-7. A coordination meeting was held with Taylor Engineering on 12 June 2014 to review the status of the plans and specifications for O-7 and to also discuss further environmental coordination that is needed. In addition, the Corps will undertake development of plans and specifications for DMMA O-23 as well. Anticipate beginning these two efforts in FY15 and funding with Federal funding.

Since both of these DMMA's could feasibly be used for either maintenance dredging of the IWW or OWW it has been determined that the existing contributed funds agreement with FIND can be the mechanism by which the Corps receives funding.



**US Army Corps
of Engineers**
Jacksonville District

IWW STATUS UPDATE FIND Board of Commissioners Meeting July 18, 2014



3. MISC.

a. Development of Plans and Specifications for Broward Reach 1: Corps would like to move forward with initiation of plans and specifications for this reach, with 100% Federal funding. Hydro survey was performed by Morgan and Ecklund and provided to the Corps on 26 June 2014. Engineering is currently reviewing the survey and will determine estimated shoaling after which a determination will be made by FIND and Corps staff on whether to proceed with dredging (is it cost effective to mobilize a dredge based on the quantity of dredge material in the channel).

If it is determined that there is a viable project within the reach, and depending on Federal funding available in FY15, FIND Contributed Funds for dredging may be needed.

b. Utilization of nearshore disposal options: The Corps is currently putting together a map which shows available nearshore disposal areas that could be utilized for IWW dredging. After the data is gathered, Corps staff will be going to Tallahassee to discuss with FDEP the need for flexible utilization of nearshore disposal areas. For example, why should we have to modify an existing FDEP permit to include a different reach if the material meets the sediment requirements? The Corps is trying to establish more flexibility.

c. GOOD NEWS STORY: A shoal was identified within the IWW reach in St. Lucie County in front of the Harbor Branch facility. The Corps Dredge Murden was in Florida performing maintenance dredging at Ponce Inlet. Through coordination, the Corps was able to direct the Murden to travel south to Fort Pierce, remove the shoal, and then proceed back home to Wilmington. This effort was funded with 100% Federal funding. We were able to remove the shoal, approximately 500k cy of material, and transport to a nearshore disposal area. This dredging ensured a depth of 12' in front of the Harbor Branch facility. As discussed in b. above, this required quick coordination with FDEP since the nearshore area permit that was utilized did not include dredging of sand within this particular reach of the IWW.



US Army Corps
of Engineers®
Jacksonville District

FLORIDA INLAND NAVIGATION DISTRICT INTRACOASTAL WATERWAY WORK ORDER No. 40-2014-02



In accordance with the Memorandum of Agreement (MOA) between the Department of the Army and the Florida Inland Navigation District (FIND) for acceptance of contributed funds for the Atlantic Intracoastal Waterway, entered into on September 3, 1997, as amended on October 22, 2001, by amendment number 1, work order number 40-2014-02 is described per the following requirements:

1. Project Name: O&M Maintenance dredging of Indian River Reach 1, Indian River County, Florida.
2. Detailed Scope of Work: The Corps will be performing maintenance dredging of Indian River Reach 1, located in Indian River County, Florida. Dredge material will be placed in Dredge Material Management Area IR2 since it is not suitable for beach placement. It is anticipated that approximately 300,000 cubic yards of material will be dredged and placed upland in IR2. Dredging will be accomplished with a cutter suction dredge.
3. Tentative Schedule: A request for proposal will be issued under the existing Small Business Dredging Multiple Award Task Order Contract (MATOC). The request for proposal for this specific effort is anticipated to be issued by July 31, 2014 and receipt of bids late August 2014.
4. Funding arrangements providing for funding of obligation: Contributed funds must be received in accordance with the MOA as amended prior to obligation. The current working level estimate is \$5,300,000. This estimate was revised due to the increase in quantity anticipated within Indian River Reach 1.
5. The amount of funds required and available to accomplish the scope of work: \$1,000,000 in Federal funds are currently available and will be used for this O&M dredging effort. \$2,500,000 in FIND Contributed Funds were approved at the May 2014 FIND Board meeting. Due to the estimate being revised, an additional \$1,800,000 in funding is required to fund the contract and is being requested from FIND.
6. Identification of individual project managers: The Contributor's project manager is Mark Crosley, 561-627-3386. The Government's project manager is Shelley Trulock, 904-232-3292.
7. Identification of types of contracts to be used: Dredging will occur under the Corps' small business dredging MATOC.

8. Types and frequency of reports: Monthly progress reports will be provided by the Government's project manager to the Contributor's project manager. The Government will also provide quarterly accounting in accordance with the MOA.

9. Identification of which party is responsible for contract administration, records maintenance, and contract audits: Corps of Engineers North Florida Area Office.

10. Procedures for amending or modifying the work order: This work order can be amended or modified in writing with mutual consent of both parties.

11. Such other particulars as are necessary to describe clearly the obligations of the parties with respect to the requested goods and services for this work order: None

THE DEPARTMENT OF THE ARMY

FLORIDA INLAND NAVIGATION
DISTRICT

BY: _____

BY: _____

Alan M. Dodd
Colonel, U.S. Army
District Engineer

Tyler Chappell
Chair, Florida Inland Navigation District

DATE: _____

DATE: _____



NASSAU COUNTY PROGRAMS STATUS REPORT

July 2014

Atlantic Intracoastal Waterway Dredged Material Management Plan

The District completed the Phase I Dredged Material Management Plan for the Atlantic Intracoastal Waterway (AIWW) in Northeast Florida in 1986. This plan was updated in 2007 in response to public and legislative concerns and the dredging reach boundaries were slightly altered. Over the next 50 years, 1.3 million yds³ of material will need to be dredged from the AIWW in Nassau County to maintain its navigability. The Plan designates that dredged material from Dredging Reach I, which is not beach quality, will be managed at Dredge Material Management Area (DMMA) NA-1 on Crane Island. Dredged material from Dredging Reach II, which is beach quality, will be placed on the Amelia Island State Park beach. (Please see the attached location maps).

Intracoastal Waterway Dredging

The AIWW in Dredging Reach II was dredged in 2006-2007. The U. S. Army Corps of Engineers (USACE) recently completed dredging approximately 578,000 yds³ of beach compatible material in this area that was placed on the Amelia Island State Park beach. Another approximately 13,000 cu/yds of non-beach compatible material was placed in DMMA DU-2. FIND provided \$4.3 million in funding for this project, of which the USACE returned \$1.4 million.

In addition, Dredging Reach I is experiencing shoaling just south of the Shave Bridge and at other locations that will be dredged in 2015 following the settling of the dikes from DMMA NA-1 constructed in 2013 (Please see attached the map).

Dredged Material Management Area NA-1 Construction

The design, engineering, and permitting of this upland dredged material management site was initiated in 2008 and completed in 2010. The final permits were received in 2012. Construction of the site commenced in 2013 and was completed in early 2014. The unique nature of this site requires the dike material to “settle” before the site is fully operational, predicted to be in late 2014.

Waterways Assistance Program

Since Nassau County joined the District in 2004, the District has received and approved 11 applications from the City of Fernandina Beach and Nassau County resulting in a District investment of \$1,170,775 towards \$2.4 million total in waterway improvement projects. The City has made significant improvements to their City marina, the development of a Riverfront Boardwalk and the creation of a managed mooring field. The County has rehabilitated a boat ramp. The City has also submitted an application for the FY 2014-15 program. (Please see the attached list and map).



NASSAU COUNTY PROGRAMS STATUS REPORT

July 2014

Cooperative Assistance Program

The City has successfully participated in the Florida Department of Environmental Protection's (FDEP) Clean Marina Program and the Amelia Island Yacht Basin has participated in the Clean Vessel Program.

Interlocal Agreement Projects

Through this program the District entered into an Interlocal Agreement with the City of Fernandina Beach to manage the dredged material from the City marina at a District dredged material management area in Duval County.

Economic Studies

In December 2011, the District completed an update to the *Economic Analysis of the Waterways in Nassau County*. The study determined that the waterways in Nassau County generate approximately \$47.6 million in economic activity each year, about 335 jobs, \$10.8 million in salaries, \$2.5 million in additional taxes, and an increase of \$141 to \$170 million in property values (Please see the attached summary and map).

Waterway Clean Up Program

The District has successfully partnered with Keep Nassau Beautiful for many years to assist with their annual trash and debris cleanup of Nassau County's waterways.

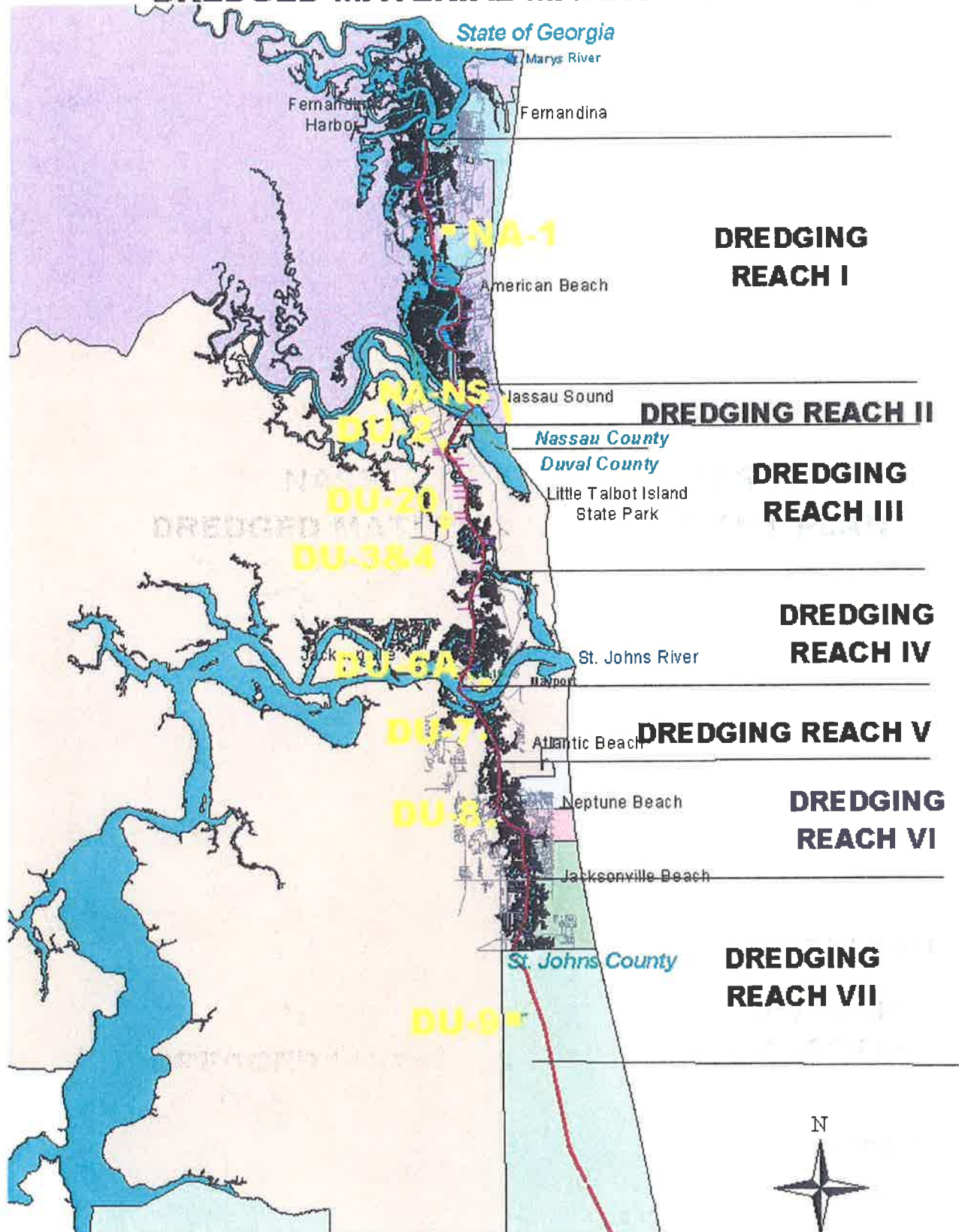
Small-Scale Derelict Vessel Removal Program

No vessels have been removed yet in Nassau County under this program.

Small-Scale Spoil Island Enhancement and Restoration Program

To date, no projects have been funded in Nassau County.

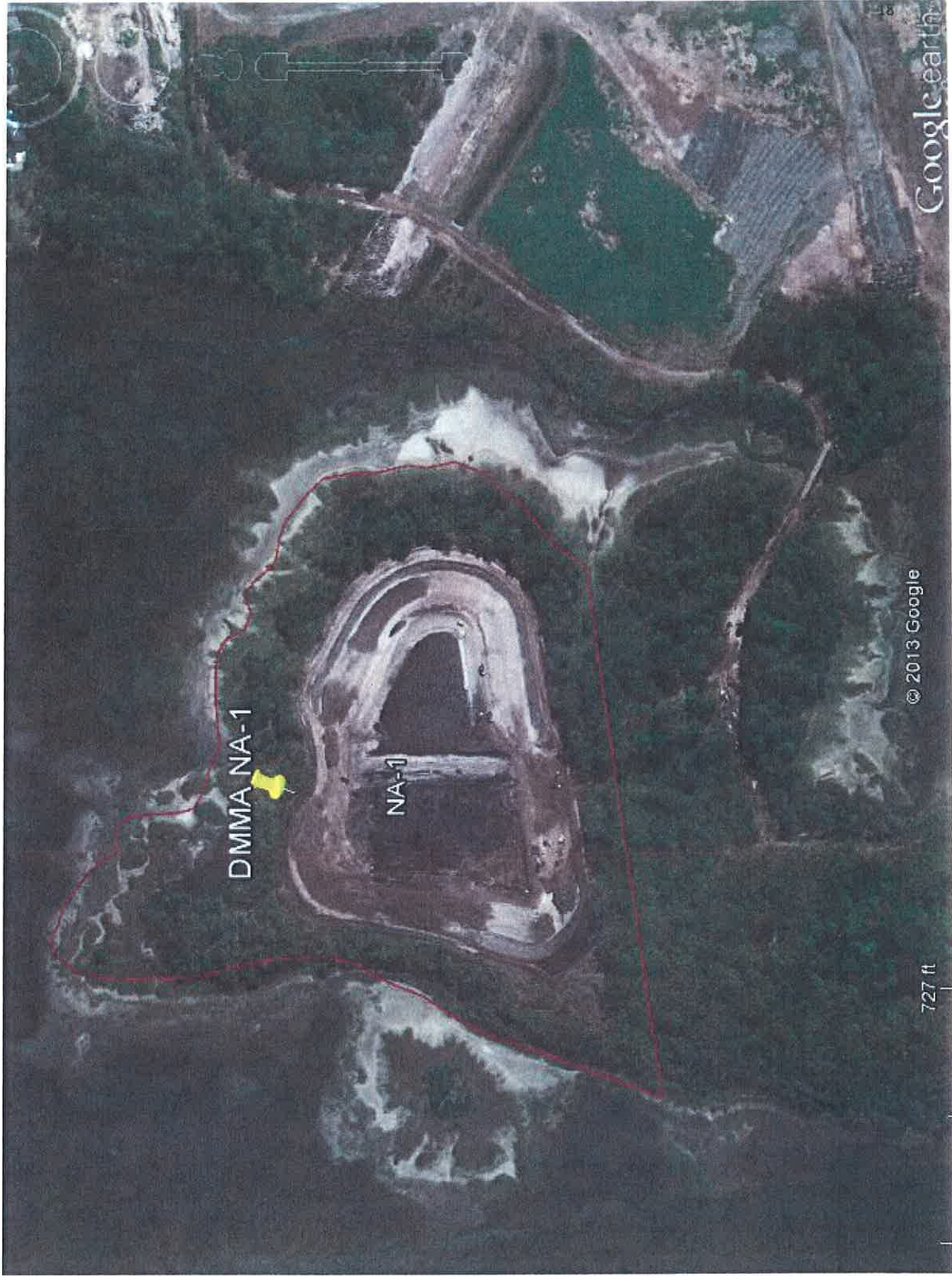
NASSAU/DUVAL COUNTIES DREDGED MATERIAL MANAGEMENT PLAN





DMMA NA-1





DMMA NA-1

NA-1

727 ft

© 2013 Google

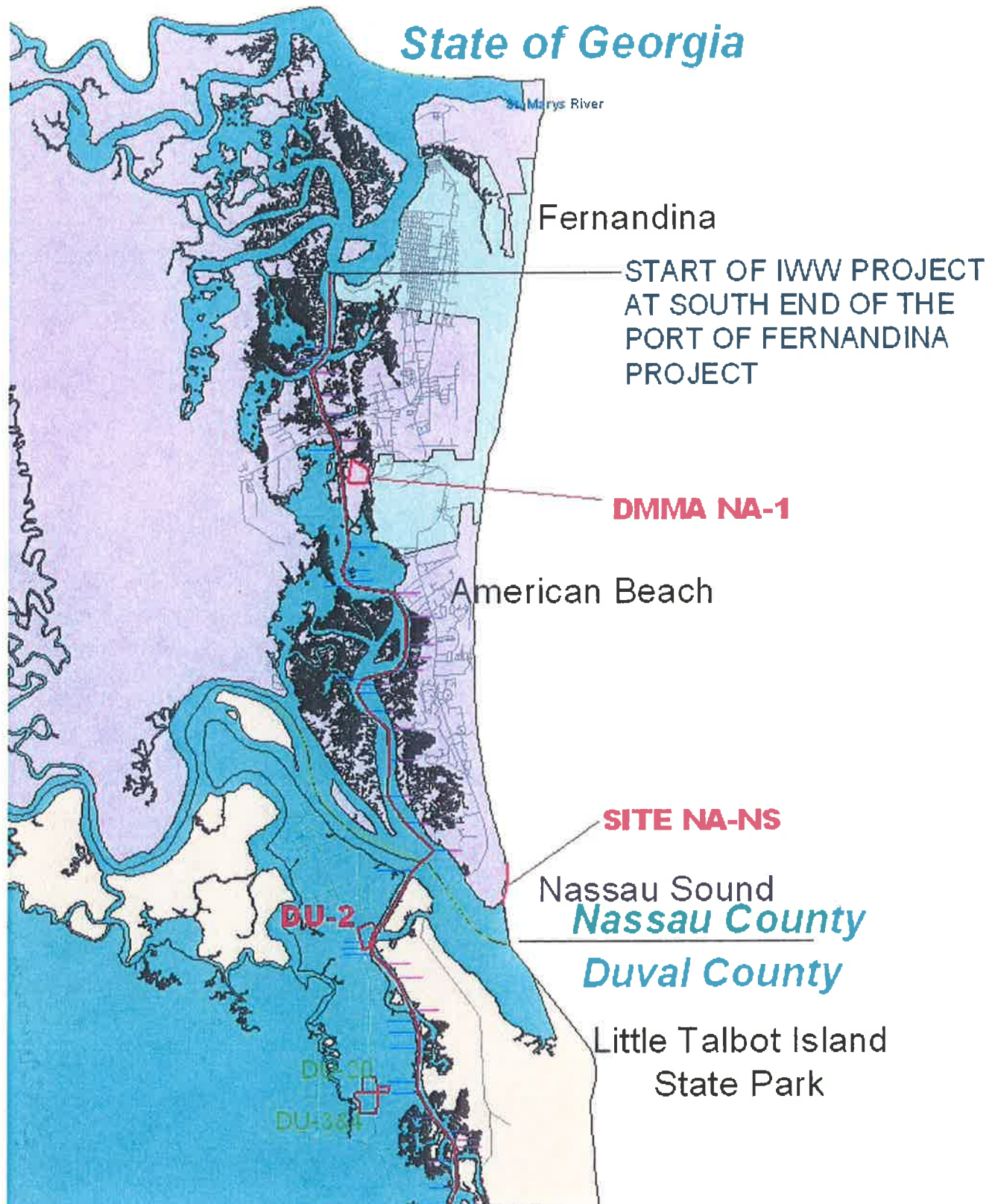
Google earth



FIND Owned
Channel
ICW Right-of-Way

DMMA DU-2

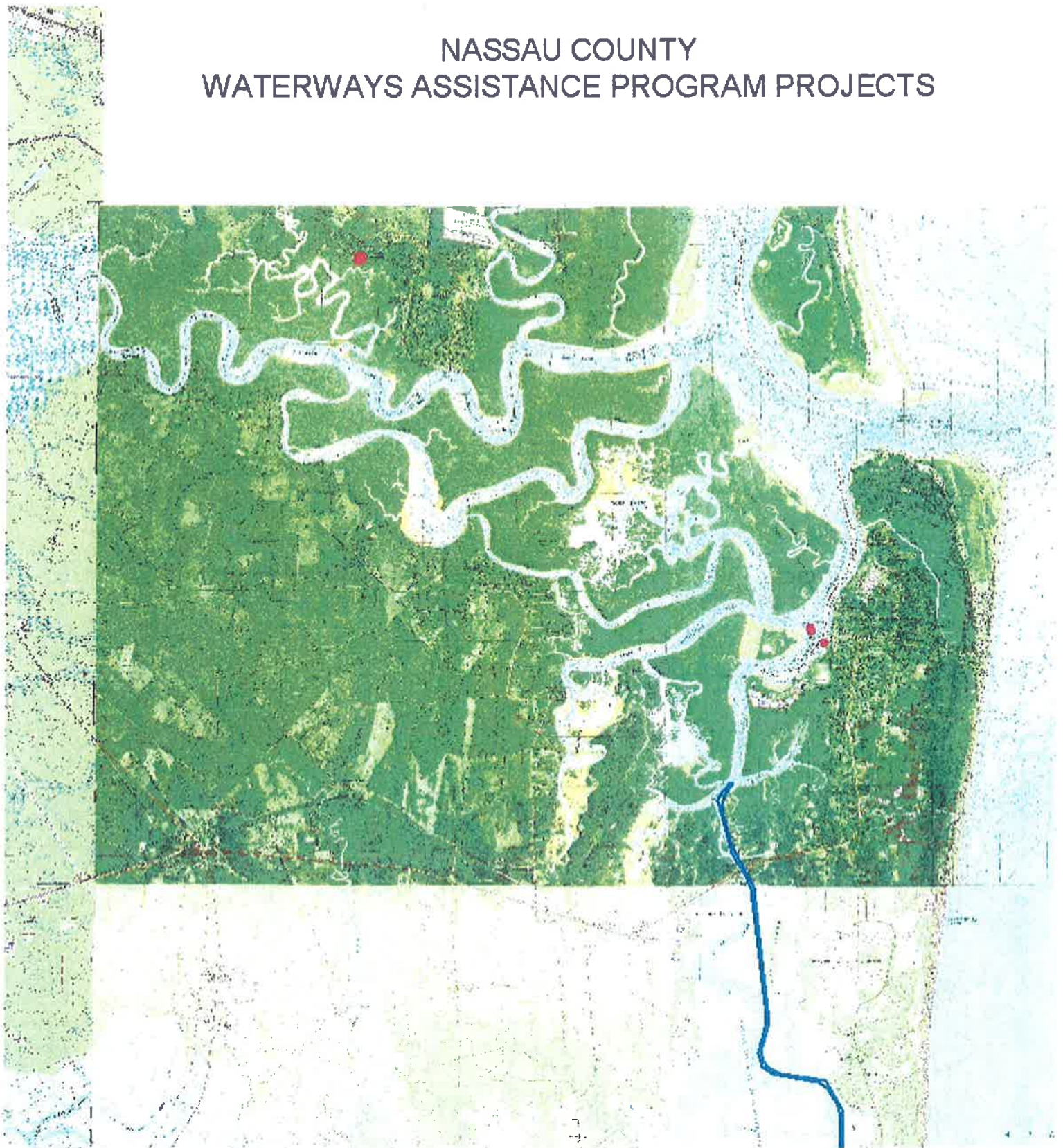




**FLORIDA INLAND NAVIGATION DISTRICT
WATERWAYS ASSISTANCE PROGRAM PROJECTS
IN NASSAU COUNTY**

Project Name	Project Number	Project Sponsor	Grant Amount	Total Cost
Wilson Neck Boat Ramp	NA-08-07	Nassau County	\$50,465	\$138,640
Mooring Field	NA-FB-05-01	City Of Fernandina Beach	\$12,500	\$25,000
Riverfront Boardwalk	NA-FB-05-02	City Of Fernandina Beach	\$112,500	\$225,000
Docks E, F & G Rehabilitation/ Replacement - Phase I	NA-FB-06-03	City Of Fernandina Beach	\$25,000	\$50,000
Mooring Field - Phase I I	NA-FB-06-04	City Of Fernandina Beach	\$62,500	\$125,000
Docks E, F & G Rehabilitation - Phase I I	NA-FB-07-05	City Of Fernandina Beach	\$221,860	\$443,720
Docks E, F, & G Rehabilitation, Phase I I, Part B	NA-FB-08-06	City Of Fernandina Beach	\$168,000	\$336,000
Fernandina Beach Boat Ramp Construction (Withdrawn)	NA-FB-09-08	City Of Fernandina Beach	\$100,000	\$200,000
Fernandina Beach Harbor Marine Basin Dredging- Ph A	NA-FB-11-09	City Of Fernandina Beach	\$174,735	\$434,848
Fernandina Beach Harbor Marine Basin Dredging- Ph B	NA-FB-12-10	City Of Fernandina Beach	\$162,215	\$342,215
Breakwater Dock Improvements	NA-FB-13-11	City of Fernandina Beach	\$81,000	\$163,000
TOTALS			\$1,170,775	\$2,483,423

LOCATION MAP

NASSAU COUNTY
WATERWAYS ASSISTANCE PROGRAM PROJECTS

ECONOMIC BENEFITS OF THE DISTRICT'S WATERWAYS

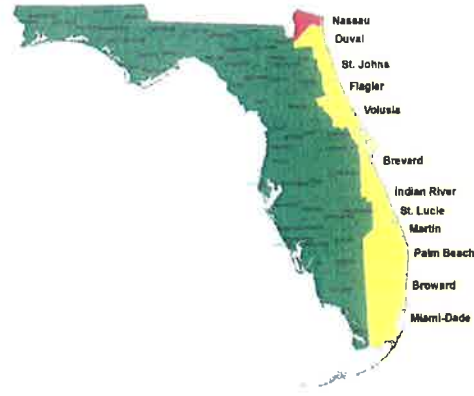


Purpose

To update economic benefits in Nassau County of marine-related activities on the District Waterways, as previously estimated in *An Economic Analysis of the District's Waterways in Nassau County*, March 2008, and to provide the general public and Federal, State, and local officials with a clear understanding of the importance of maintaining the waterways.

Scenarios Evaluated

1. Current Existing Conditions
2. Cessation of Waterways Maintenance
3. Increase in Waterways Maintenance
4. Estimated impact of the 2007-2009 U.S. economic recession



ECONOMIC IMPACTS

Current Existing Impacts

- \$47.6 million in business volume
- \$10.8 million in personal income
- 335 jobs
- \$2.5 million in tax revenue

Impacts of Cessation of Waterways Maintenance

- Decrease of \$10.3 million in business volume
- Decrease of \$2.5 million in personal income
- Decrease of 89 jobs
- Decrease of \$0.5 million in tax revenue

Impacts of an Increase in Waterways Maintenance

- Increase of \$2.6 million in business volume
- Increase of \$0.6 million in personal income
- Increase of 15 jobs
- Increase of \$0.1 million in tax revenue

Impact of the 2007-2009 U.S. Economic Recession

- Decrease of \$24.6 million in business volume
- Decrease of \$5.5 million in personal income
- Decrease of 200 jobs
- Decrease of \$1.3 million in tax revenue

Economic Benefits as of April 2011

NASSAU COUNTY



ECONOMIC BENEFITS OF THE DISTRICT'S WATERWAYS

NASSAU COUNTY

The Intracoastal Waterway

The Atlantic Intracoastal Waterway (AICW) is a 1,391-mile channel between Trenton, New Jersey, and Miami, Florida. The Waterway along Florida's eastern seaboard is 406 miles long and follows coastal rivers and lagoons past numerous tourism-oriented communities. The channel is authorized to a depth of 12 feet from Nassau County to Fort Pierce, and a 10 foot depth south through Miami-Dade County. Boating activities on the waterways contribute to the existence of numerous marine-related businesses such as marinas and boatyards and have stimulated development of residential properties on the Waterways.

The Navigation District

The Florida Inland Navigation District, created in 1927, is the local sponsor for the AICW in Florida. In cooperation with the Jacksonville District of the U.S. Army Corps of Engineers, the Navigation District is responsible for maintenance of the AICW in Florida. To maintain navigation, the waterways need to be periodically dredged due to shoaling from currents, upland soil erosion, and the movement of offshore sands through the ocean inlets. Maintenance dredging is projected to cost approximately \$12 to \$16 million annually during the next 50 years, of which 50 percent of the costs are expected to be borne by property owners within the Navigation District's jurisdiction.

The Navigation District also partners with other governments to provide waterway access and improvement facilities for our mutual constituents. These projects include public boat ramps, marinas, side channels, parks, fishing piers, boardwalks, navigation aids, derelict vessel removal, shoreline stabilization, and waterway cleanups.

Source of Data Used in This Analysis

The economic benefits of the Waterways were estimated in March 2008 in *An Economic Analysis of the District's Waterways in Nassau County*.

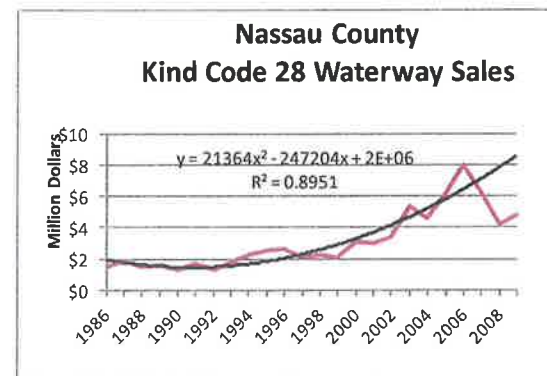
Updating of Previously Estimated Benefits

The benefits presented in this analysis were estimated by updating the direct marine-business

impacts in the original analysis to current values using the change in gross sales reported by boat dealers to the Florida Department of Revenue (FDOR). The updated direct impacts were used in conjunction with an IMPLAN input/output model to estimate total economic benefits.

Estimating the Impact of the Recession

The impact of the recession was estimated by determining the trend in gross sales of boat dealers over the 20-year period prior to the onset of the recession. This trend was used to estimate the theoretical gross sales if sales had continued to increase at the rates previously experienced. The red line in the figure below illustrates reported actual gross sales of boat dealers and the black line illustrates the trend of those sales. From 2007 to 2009 gross boat dealer sales in Nassau County decreased by 24 percent; if the recession had not occurred, it is estimated that gross sales from 2007 to 2009 would have increased by 34 percent.

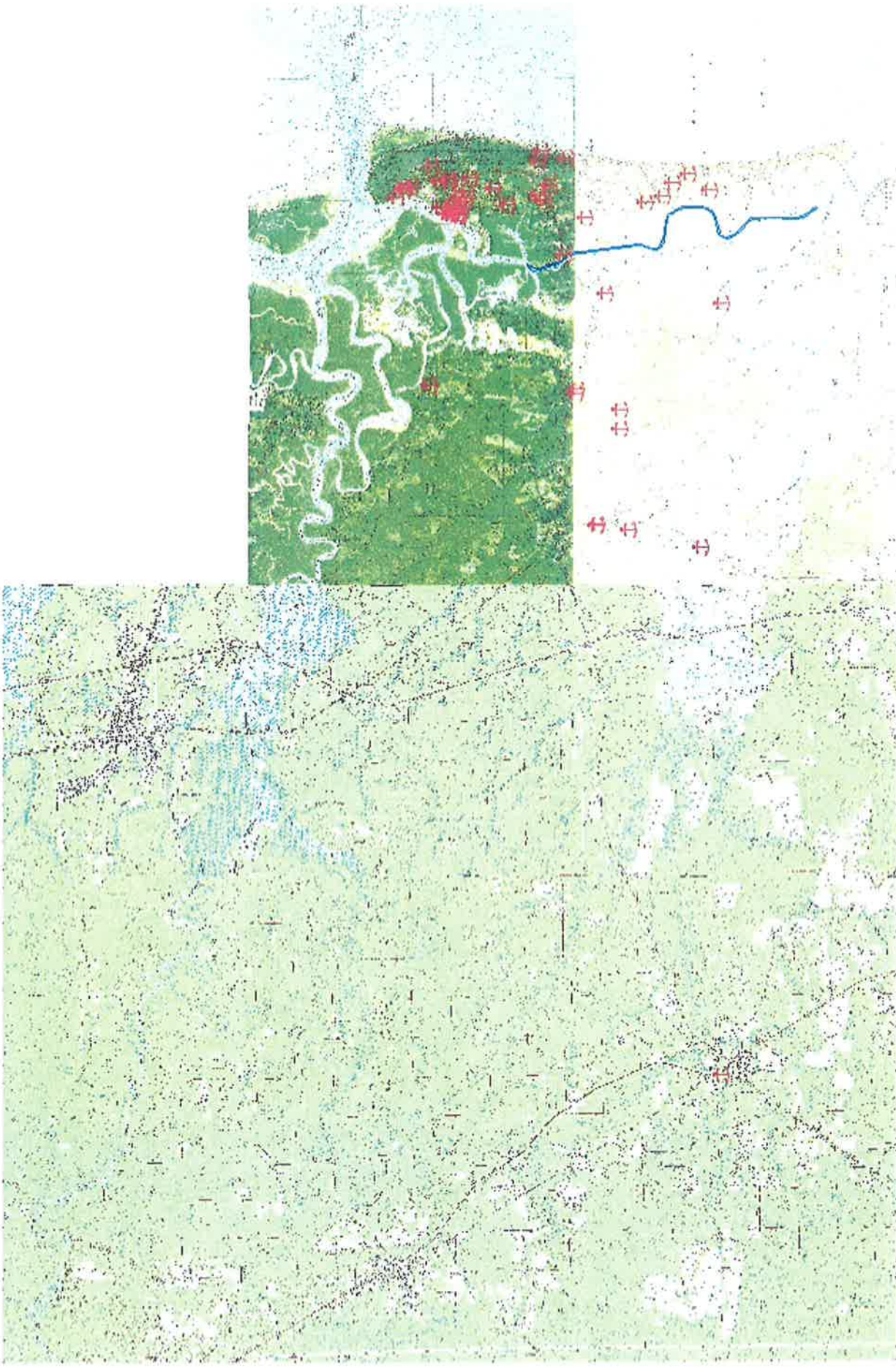


Annual Boater Spending on Gas, Food, and Drinks at Non-Marine-Related Establishments

- Current existing conditions: \$4.4 million
- Cessation of maintenance: \$3.8 million
- Increased maintenance: \$4.4 million
- Assuming no recession: \$6.4 million

Vessel Draft Restrictions Assumed for Each Scenario

- Current existing conditions: 6.5 feet MLW
- Cessation of maintenance: 3 feet MLW
- Increased maintenance: 12 feet MLW
- Assuming no recession: 6.5 feet MLW



LOCATION MAP
NASSAU COUNTY
WATERWAY RELATED BUSINESSES



July 3, 2014

Mr. Mark Crosley
Executive Director
Florida Inland Navigation District
1314 Marcinski Road
Jupiter, FL 33477

RE: DU-8 DMMA Pipeline Sleeve Construction; Duval County, Florida
Professional Construction Administration Services

Mr. Crosley:

Taylor Engineering is pleased to submit the enclosed scope of work for professional construction administration services (Attachment A) and fee proposal (Attachment B) for the DU-8 DMMA Pipeline Sleeve Construction project. Primary tasks include preconstruction coordination, construction administration, and project closeout over the expected 60-day construction period.

Taylor Engineering will perform these services on a cost plus basis, for a total cost not to exceed \$16,974.00 (Attachment B).

Please contact me at 904-731-7040 ext. 288 or jadams@taylorengeering.com with any questions.

Sincerely,

John Adams, P.E.
Senior Advisor

Attachments (2)

**DU-8 DMMA PIPELINE SLEEVE CONSTRUCTION
DUVAL COUNTY, FLORIDA
PROFESSIONAL CONSTRUCTION ADMINISTRATION SERVICES**

**ATTACHMENT A
SCOPE OF WORK**

DU-8 DMMA PIPELINE SLEEVE CONSTRUCTION PROFESSIONAL CONSTRUCTION ADMINISTRATION SERVICES

This scope of services describes Taylor Engineering's proposed professional construction administration services in support of the DU-8 DMMA Pipeline Sleeve Construction project. The FIND Site DU-8 is located at 13801 Evergreen Drive, Jacksonville, Florida.

The completed project, resulting in an approximately 365-ft long (36-inch diameter) pipeline sleeve installation, requires completion of the following project tasks:

1. Locating and coordinating construction with on-site utilities
2. Installing HDPE pipeline sleeve
3. Providing earthwork cut and fill
4. Constructing a concrete termination structure
5. Providing finish grading
6. Sodding

Taylor Engineering has developed its scope of work based on the following assumptions:

1. Contractor selection will occur in early August.
2. The project construction phase (including close-out) will extend from approximately August 2014 through October 2014
3. Project construction will not require review, negotiation, or preparations of change orders or work change directives.
4. Project construction will neither result in any substantial deviations from the project drawings and specifications nor require environmental permitting.

If any of these assumptions prove incorrect, Taylor Engineering will work with FIND to develop appropriate modifications to this scope of work and cost.

TASK 1 CONSTRUCTION ADMINISTRATION FOR 60-DAY CONTRACT

This task includes the following sub-tasks:

- Attend preconstruction meeting
- Review up to 18 submittals/shop drawings
- Observe construction activities
- Prepare general site visit report following each site visit
- Schedule and prepare for 4 on-site progress meetings (once every two weeks)
- Review and approve up to 2 monthly pay applications

Taylor Engineering representatives will conduct a preconstruction meeting with the contractor at Taylor Engineering's Jacksonville office. The preconstruction meeting will serve to describe the project and answer contractor's questions concerning any technical aspects of the work. In addition, Taylor Engineering will discuss the ground rules and other issues including lines of engineer and contractor authority, general and specific contract conditions, contract administration, progress payment, correspondence procedures, project schedule, submittal register, and labor requirements. We will take minutes of the preconstruction meeting discussions and distribute them to FIND and the contractor. We assume the preconstruction meeting will occur at Taylor Engineering's Jacksonville office. This meeting will occur after the Notice to Award and shortly before or immediately after the Notice to Proceed.

ATTACHMENT A

We will assist FIND in administering the construction contract from our office in Jacksonville and from the project site. In-office duties will include reviewing the contractor's shop drawings and submittals, reviewing progress pay applications, and providing oversight of the work progress. We will remain available throughout construction to provide advice and consultation to FIND. In this role, we will address questions pertaining to engineering, design, permitting issues, and any proposed changes to project design.

We will provide on-site observation services two days a week with an experienced observer on site between one and two hours each observation day. Our visits will include observation of the work and monitoring of the contractor's means, methods, and sequence. We will observe the contractor's activities to evaluate whether they are within general conformance with the project contract, drawings, specifications, and environmental permits. As part of the observation process, we will complete a twice-weekly construction report, which will become part of the project record. The report will include the name of the observer, weather conditions, date, personnel/visitors on site, the contractor's personnel and equipment, summary of events, and the contractor's representative and observer's signature. These reports will constitute a log of construction progress.

In addition, we will coordinate our site visits schedule to attend formal on-site project meetings once every two weeks to discuss project progress and address questions pertaining to engineering, design, permitting issues, proposed changes to the project design, and any conflicts. Attendees will include representatives from the construction contractor and its subconsultants, and Taylor Engineering. The progress meeting agenda will generally include review of minutes of previous meetings, work progress since the previous meeting, current definable features of work (i.e., construction schedule, submittal register, reviewing testing, changes to construction schedule, contract quality for materials and workmanship, pending modifications, changes and substitutions), and other business, as appropriate.

Throughout the observation process, we will notify FIND of any environmental concerns, work stoppages, or conflicts, and recommend to FIND ways to resolve these issues. However, we will not direct the contractor's means and methods of construction. Taylor Engineering is not responsible for jobsite safety. Taylor Engineer's Senior Advisor will provide senior management review and quality control/quality assurance oversight.

TASK 3 PROJECT CLOSE-OUT

This task includes the following sub-tasks:

- Review final pay application
- Review contractor release of lien
- Attend pre-final and final observation meetings
- Conduct final review/acceptance of field data

Once FIND receives from the contractor a request to certify the project substantially complete, Taylor Engineering will visit the project site to determine the degree of completion. If we cannot certify substantial completion, we will develop preliminary and final punch lists of items for the contractor to complete or correct. With concurrence from FIND, we will transmit this list to the contractor. Upon completion of outlined items, we will certify the project substantially complete. We have budgeted for maximum of two on-site meetings during this stage of the project.

We will collect and review the following information from the contractor before project closeout.

ATTACHMENT A

- Final waiver and release of lien from contractor (does not include subcontractors, material suppliers, or equipment vendors, etc.)
- Final pay application
- Post-construction record drawings
- Post-construction/as-built survey

As part of the 30-day sod establishment period, Taylor Engineering will conduct a preliminary, and final evaluations (up to two total site visits) to determine the overall success of the grass.

Taylor Engineering will prepare a DVD (or a set of DVDs, if necessary) of the construction project records for submittal to FIND at project completion.

**DU-8 PIPELINE SLEEVE CONSTRUCTION
DUVAL COUNTY, FLORIDA
PROFESSIONAL CONSTRUCTION ADMINISTRATION SERVICES**

**ATTACHMENT B
COST PROPOSAL**

TAYLOR ENGINEERING, INC.

COST SUMMARY BY TASK

P2014-104: FIND: DU-8 Pipeline Sleeve Construction: Professional Construction Administration Services

TASK 1: Construction Administration for 60-day Contract

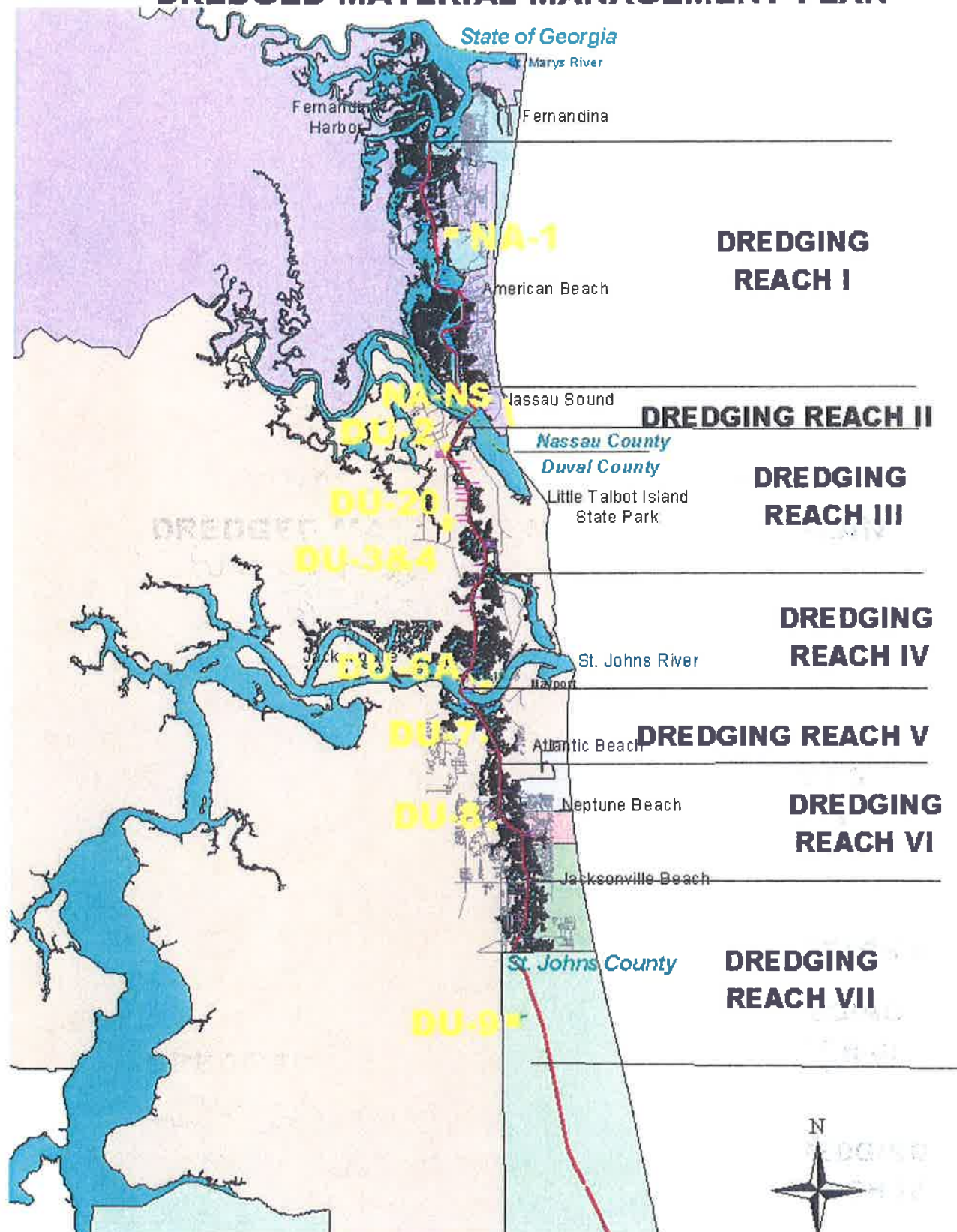
<i>Labor</i>	Hours	Cost	Task Totals
Vice President	4	740	
Senior Advisor	1	185	
Senior Professional	61	8,235.00	
Staff Professional	60	5,160.00	
Total Man-Hours	126		
Labor Cost			14,320.00
<i>Total Task 2</i>			14,320.00

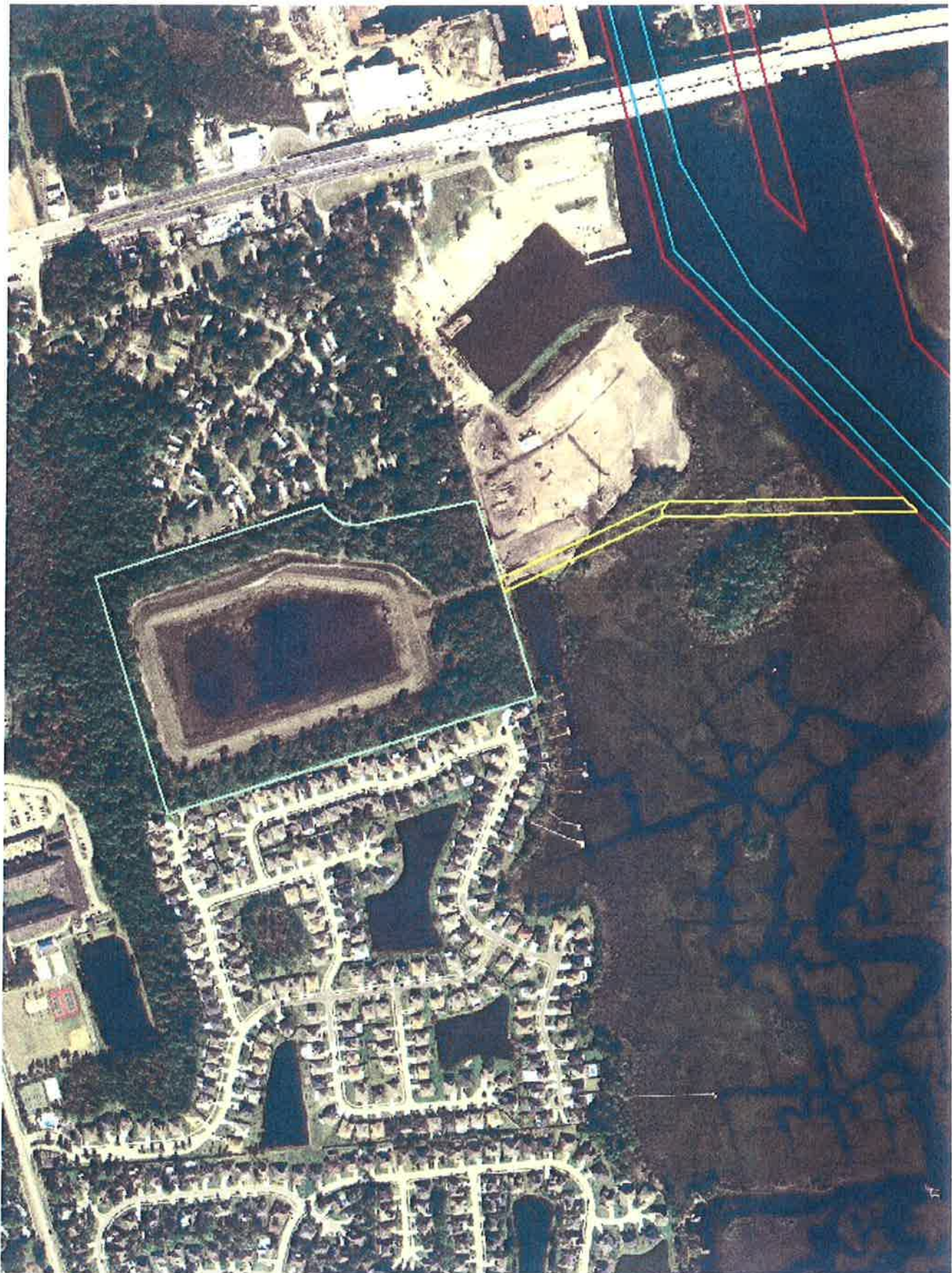
TASK 2: Project Close-Out

<i>Labor</i>	Hours	Cost	Task Totals
Senior Advisor	2	370	
Senior Professional	8	1,080.00	
Staff Professional	14	1,204.00	
Total Man-Hours	24		
Labor Cost			2,654.00
<i>Total Task 2</i>			2,654.00

Project Total**\$16,974.00**

NASSAU/DUVAL COUNTIES DREDGED MATERIAL MANAGEMENT PLAN





FIND Easement
FIND Owned
Channel
ICW Right-of-Way

DMMA DU-8





DMMA DU-8

DU-8

© 2013 Google

Google earth

Mark Crosley

From: Steve Dial <sdial@dialcordy.com>
Sent: Monday, June 30, 2014 11:59 AM
To: Mark Crosley; 'Lori Brownell'
Cc: Martha Robbart; 'Joseph R. Wagner'
Subject: RE: Revised Cost for Dania Cut off Canal

As discussed, please find our revised cost for this years monitoring due to a reduction in mobilization cost since we will have our team there for the Broward AICW project.

2014 Survey and Report -\$ 7,406.40

2014 and 2015 Surveys and Reports - \$18,948.99

Best-Steve

From: Steve Dial
Sent: Tuesday, June 17, 2014 5:21 PM
To: Mark Crosley; Lori Brownell
Cc: Martha Robbart; Joseph R. Wagner
Subject:

Mark, attached please find the 2011 scope of work sent out from FIND and our initial quote. Assuming this suffices for our scope of work, DC&A agrees to provide the work for the below stated fees.

2014 Survey and Report -\$11,206.40 (3% increase from 2011)

2014 and 2015 Surveys and Reports -\$ 22,748.99 (assumes a 3% escalation from 2014 to 2015)

I have not reduced mob cost for this years survey, but can do so when and if Taylor is ready to move on contracting for the SAV survey of the AICW in Broward.

Let me know if you have any comments.

Thanks, Steve

Mark Crosley

From: Steve Dial <sdial@dialcordy.com>
Sent: Tuesday, June 17, 2014 5:21 PM
To: Mark Crosley; Lori Brownell
Cc: Martha Robbart; Joseph R. Wagner
Attachments: DaniaCostProposal5.pdf

Mark, attached please find the 2011 scope of work sent out from FIND and our initial quote. Assuming this suffices for our scope of work, DC&A agrees to provide the work for the below stated fees.

2014 Survey and Report -\$11,206.40 (3% increase from 2011)

2014 and 2015 Surveys and Reports -\$ 22,748.99 (assumes a 3% escalation from 2014 to 2015)

I have not reduced mob cost for this years survey, but can do so when and if Taylor is ready to move on contracting for the SAV survey of the AICW in Broward.

Let me know if you have any comments.

Thanks, Steve



**REQUEST FOR COST SUMMARY PROPOSALS
FOR**

SEAGRASS SURVEYING SERVICES

**FOR THE
DEEPENING OF THE DANIA CUT OFF CANAL PROJECT
IN FT. LAUDERDALE**

PROPOSAL NO. 2011-05

FLORIDA INLAND NAVIGATION DISTRICT
REQUEST FOR COST SUMMARY PROPOSALS
FOR
SEAGRASS SURVEYING SERVICES
FOR THE
DEEPENING OF THE DANIA CUT OFF CANAL PROJECT
IN FT. LAUDERDALE

PROPOSAL NO. 2011-05

I. BACKGROUND

The Florida Inland Navigation District (District) will be deepening a portion of the Dania Cut Off Canal in the vicinity of Port Everglades in Ft. Lauderdale (Project) to -17 feet mean low water. The District is seeking Cost Summary Proposals from our shortlist of approved Seagrass and Benthic Survey Contractors (Contractors) to perform a pre-construction seagrass survey of the Project Area in accordance with our Agreement with the Contractors for these services, the approved Dania Cutoff Canal Deepening Project Seagrass Monitoring for Direct and Indirect Impacts, Seagrass Survey Protocol (Attachment B), the *Recommendations for Sampling Halophila johnsonii at a Project Site* (Attachment C) and the NMFS, Southeast Region Habitat Conservation's Division's *Best Management Practices for Surveying Seagrass for Coastal Construction Planning in Florida* (Attachment D).

II. PROJECT AREA

This Project will include the area shown in Attachment A and in Attachment B, Figure 3. This area is approximately 3,700 feet in length. If seagrass beds are found during the field survey, their entirety will be surveyed.

III. SCOPE OF WORK

The following constitutes the required Scope of Work that the Contractor must include in their Proposals. The survey will follow the approved Dania Cutoff Canal Deepening Project Seagrass Monitoring for Direct and Indirect Impacts, Seagrass Survey Protocol (Attachment B), *Recommendations for Sampling Halophila johnsonii at a Project Site* (Attachment C) and the NMFS, Southeast Region Habitat Conservation's Division's *Best Management Practices for Surveying Seagrass for Coastal Construction Planning in Florida* (Attachment D). Other seagrass monitoring work for the Project referenced in Attachment B will be bid at a later date.

- III.1 Prepare seagrass survey methodology of the Project area for the District's review and approval.
- III.2 Revise the seagrass survey methodology based upon District comments.
- III.3 Perform the seagrass survey prior to September 30, 2011.
- III.4 Prepare report and mapping of surveys results.

IV. DELIVERABLES

Deliverables will be written survey reports with accompanying maps of the surveyed areas in hard copy and digital formats. Digital maps will be provided in ARCINFO GIS as well as CADD.

V. GENERAL INSTRUCTIONS FOR THE PREPARATION AND SUBMISSION OF PRICE QUOTES

V. 1. Issuing Office:

Florida Inland Navigation District
 1314 Marcinski Road
 Jupiter, FL 33477
 Telephone (561)627-3386
 FAX (561)624-6480
 Project Manager: David K. Roach, Executive Director

V. 2 Time, Date, and Place Price Quotes are Due:

Proposals must be received **NO LATER THAN 2:00 P.M.** local prevailing time on September 14, 2011. Quotes can be delivered to the issuing office by mail, express mail, facsimile or e-mail. **CAUTION:** Proposals received after the time specified for receipt will not be considered.

VI. COST SUMMARY PROPOSAL

Cost Summary Proposals shall be submitted on Attachment D.

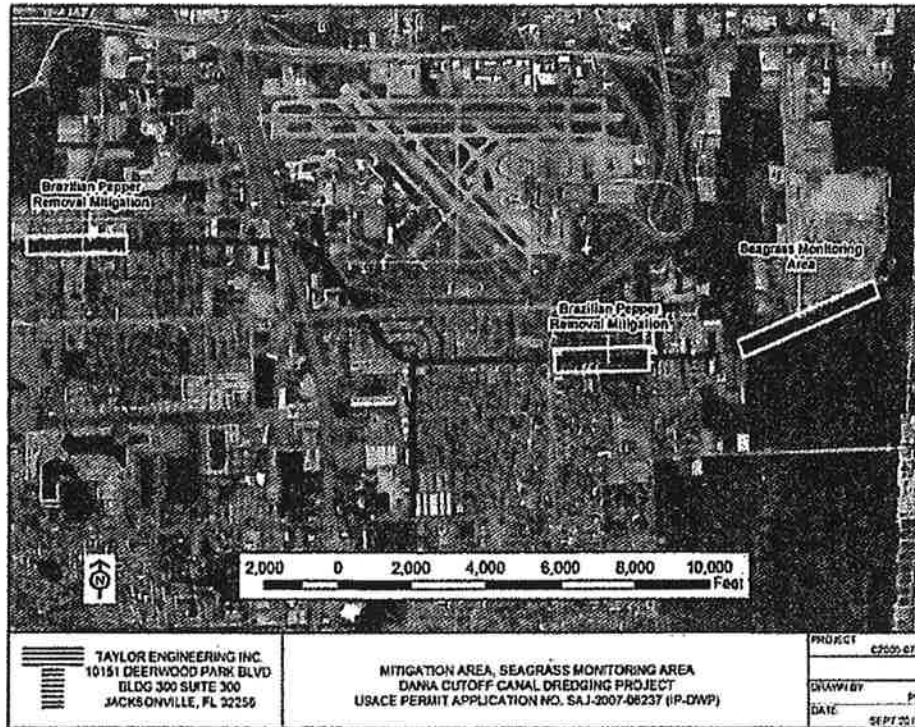
VII. PROPOSAL EVALUATION

Cost Summary Proposals will be evaluated by District staff and potentially the District Board depending on the level of costs involved.

VIII. PROPOSAL AWARD

The District intends to approve the low qualified price quote for this Project on or before September 17, 2011. A Work Order will be executed by September 19, 2011. -

ATTACHMENT A



ATTACHMENT B

Dania Cutoff Canal Deepening Project Seagrass Monitoring for Direct and Indirect Impacts Seagrass Survey Protocol January 2011

Introduction

The proposed project will deepen Dania Cutoff (Dania) Canal in the commercial/industrial marina section west of Lake Mary Park. The offloading location for the dredged material locates on the Everglades Port Authority Property opposite Lake Mary Park. Seagrass beds, while not present in the dredge footprint (west of Lake Mary Park) do occur east of the project area on the Lake Mary side of Dania Canal and may occur on the other side as well. Direct seagrass impacts could occur during project construction (from sedimentation), and possibly afterward due to other direct and indirect project effects. Therefore, as requested by the National Marine Fisheries Service staff, FIND proposes a monitoring program to evaluate potential impacts.

For Broward County, Miller Legg Associates, Inc. performed sea grass surveys in Dania Canal along the Lake Mary Park border in 2008 and 2009 (Figure 1). These data could provide a background and/or baseline for seagrass cover in the canal. FIND proposes to use these data as a baseline against which to assess project impacts. A baseline monitoring effort (prior to start of construction) combined with the 2008-2009 Miller-Legg data (quantitative shapefiles of seagrass in the monitoring area provided by Miller Legg Associates) will provide the baseline for project compliance monitoring.

Field Survey Methods

Preliminary Survey

The preliminary reconnaissance will consist of divers swimming shore-parallel transects within the survey area (between the deep channel edge to the shoreline on both [north and south sides of the channel]). The survey area will begin at the west boundary of Lake Mary Park and end at the confluence of the Canal and a Lake Mary Park estuarine creek near the eastern end Dania Canal (Figure 2). For diver safety, no survey work will occur in the deep main channel portion of the canal. Transect spacing will likely vary based on environmental conditions (e.g., visibility, bathymetry, sediment conditions, etc.) and the likelihood of resource occurrence. The consultant will apply reasonable scientific judgment in determining the level of detail required during the preliminary reconnaissance phase.

Since tidal conditions and upstream flows significantly influence vegetation in the canal, field biologists will avoid working at least 72 hours after major rainfall events and stormwater discharges. Biologists will use their experience to select appropriate field conditions and record turbidity and salinity as part of the field work efforts at the beginning and end of each day's work at both ends of the survey area.

Detailed Sampling

The objective of the detailed survey is to map and characterize seagrass habitat located during the preliminary survey efforts. DGPS will provide all location data. The detailed portion of the survey will include both qualitative and quantitative sampling methods.

Based on the results of the preliminary reconnaissance, the consultant will establish a series of shore-perpendicular transects spaced at approximate 25-m intervals within areas identified as seagrass habitat (Figure 3: nominal spacing of transects). Seagrass habitat includes both continuous seagrass beds and areas with sparse or patchy seagrass distribution. If a particular survey area requires a greater level of detail to accurately assess the habitat, the consultant will adjust the transect spacing as appropriate in the field. To provide quantitative assessment of seagrass distribution and occurrence along each transect, the consultant will deploy a 1-m² quadrat subdivided into 100 sub-units at the 0 point and at 5 m intervals. At each quadrat location, field staff will collect data for each seagrass species and algae (to the lowest taxonomic group identified) present including the number of sub-units containing at least one seagrass shoot, the average cover abundance score (Braun-Blanquet, 1965) and additional information (e.g., water depth, substrate conditions, presence of seagrass flowering, epiphytic cover, etc.) as appropriate. The consultant will also conduct density (short shoot) counts within three representative quadrats for each species in each Braun-Blanquet category identified.

In addition to quadrat sampling, the consultant will record locations of changes in marine habitat along each transect and qualitatively assess habitat characteristics. For a 1-m width along the length of each transect, the consultant will record significant substrate and habitat changes (sand, seagrass, oysters, hardbottom, etc.), and seagrass species composition, and density. Based on visual percent cover approximations, seagrass density categories will comprise low (1-25%), medium (26-50%), medium-high (51-75%), and high (76-100%). The consultant will use both the quadrat data with the qualitative data to generate resource maps.

Following data collection, the consultant will apply the Braun-Blanquet (1965) methodology to calculate the frequency of occurrence, abundance, and density for each seagrass species and algae (to the lowest taxonomic group identified) present along each transect. The consultant will prepare a written report documenting the submerged resource survey. The report will include all results of survey data collection efforts described above and other observations, such as, but not necessarily limited to, observations of fishes seen during the reconnaissance efforts and detailed surveys.

Monitoring and Impact Assessment

Water quality conditions at this site may impact seagrass distribution to a much greater extent than any impact that the project might create. A reduction in seagrass distribution is not necessarily related to project activities. Deciding *a priori* what constitutes impact is to incorrectly assume that all changes in seagrass distribution must relate to the proposed construction; Therefore, we will follow the following sampling protocol to determine project impacts, if any:

1. Quantify seagrass distribution and condition before construction (pre-construction survey) as proposed in the drawings submitted to USACE.
2. Use the preconstruction and Miller Legg data to identify seagrass areas for comparison purposes — select an area east of the offloading point (as a control area) to compare with areas adjacent to and west of the offloading point (potential impact area).
3. Collect turbidity and salinity data at the east and west ends of the seagrass monitoring area at the beginning and end of each work day. Include this information as part of the construction monitoring reports.

4. Perform seagrass edge monitoring every other week during construction to answer the following questions:
 - a. Are seagrass edges moving during construction?
 - b. If so, where does this movement occur?

Answers to these questions will also provide a clear record of the period during which a specific direct impact (if any) occurred
5. Track stormwater discharge records (from gauge station west of the project area as they become available from SFWMD) and provide these data as part of the construction monitoring reports as they become available.
6. Perform a post-construction seagrass survey.
7. Evaluate the entire dataset outlined above.
 - a. If the dataset shows a direct impact, develop and implement a mitigation plan.
 - b. If salinity and flow have not fluctuated significantly and negative seagrass changes in the area adjacent to the path of the barges exceed changes to the east in the Dania Canal, then assess the amount of impact. Consult with USACE.
8. If the monitoring identifies impacts, continue to monitor the impacted and non-impacted areas for an additional year (post project completion) to determine whether the impact is temporary or permanent. During this year, develop a mitigation plan for possible permanent impacts.
9. Consult with USACE on the results. If necessary, implement the mitigation plan.

Reporting

Minimum report components include:

- Narratives and graphics detailing the preliminary and detailed field survey methods
- Survey environmental conditions
 - Survey date(s)
 - Name of person who conducted the survey and other representatives present
 - Time of survey
 - Weather conditions
 - Visibility
 - Tidal Stage and tendency (i.e., flood or ebb)
 - Canal flows (when available)
 - Water quality (beginning and end of each work day at east and west stations)
- Data analysis and results
 - Fieldwork results
 - Scaled site map that delineates area surveyed and seagrass patches or beds
 - Area of seagrass by delineated patch
 - Estimates of percent cover and species present/absent (tabular and graphic formats)
 - Shoot density estimates (tabular and graphic formats)
 - Other observations made during fieldwork, in particular fisheries resources, and any unusual conditions that might influence the proposed project
 - Comparisons with past fieldwork results (as applicable).

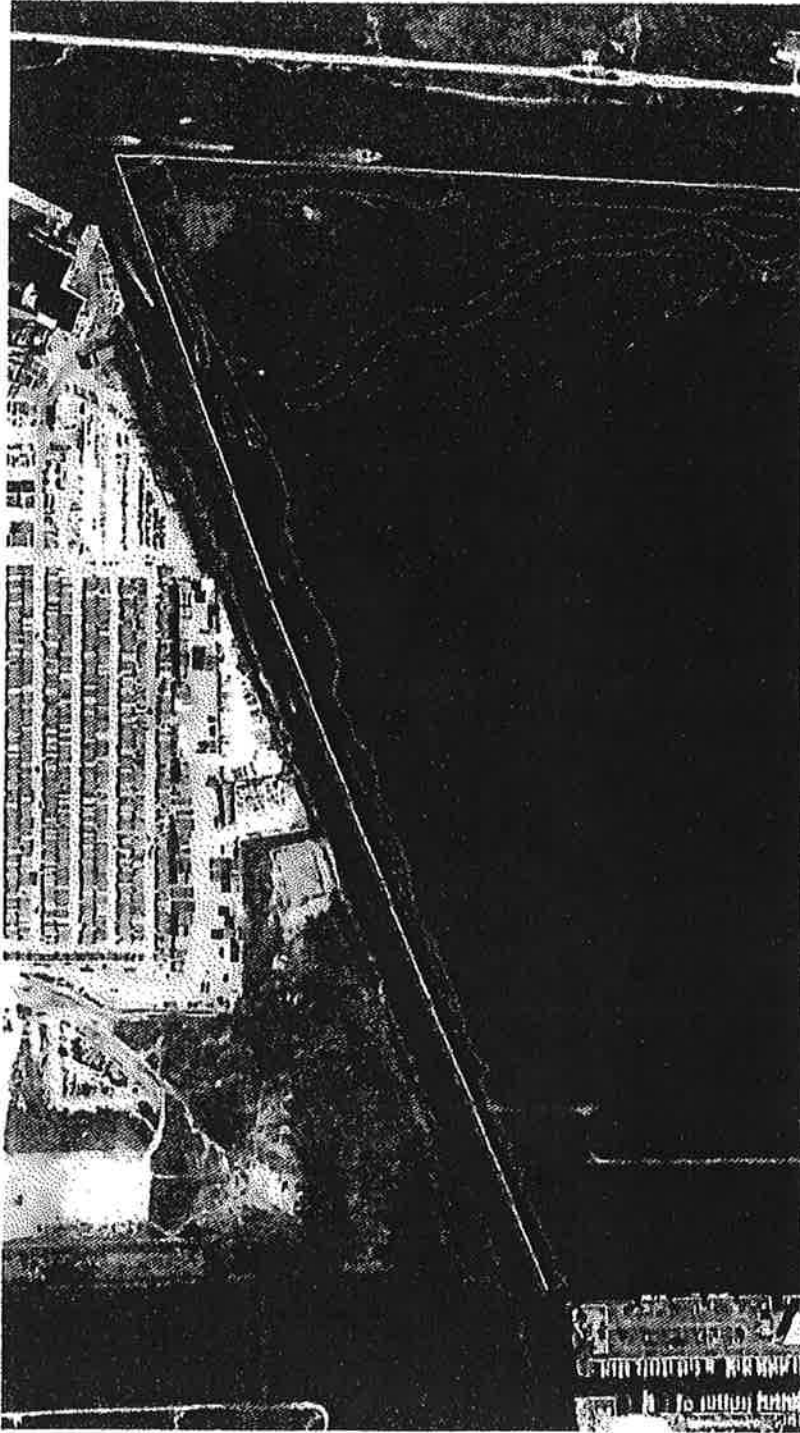


Figure 1. Seagrass patches mapped by Miller-Legg for Broward County, 2009.

A2-3



Figure 2. Figure provided by NMFS: "2008 verification points combined with 2001 and 2006 Corps of Engineers surveys. Map modified from Miller 2008.

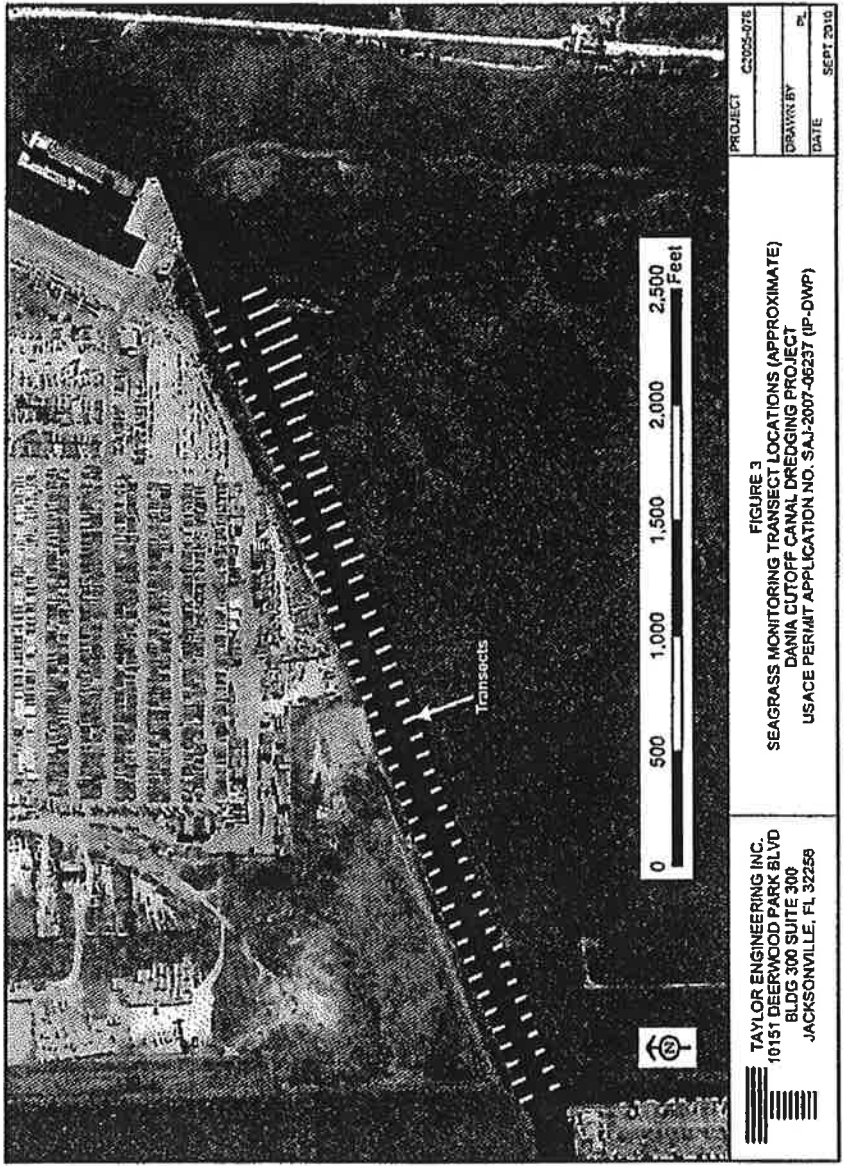


Figure 3. Seagrass monitoring transects 25 m apart along the survey area.

Attachment C

Recommendations for Sampling *Halophila johnsonii* at a Project Site

The above-suggested approaches for sampling *H. johnsonii* are recommendations of the *H. johnsonii* Recovery Team.

Objective:

To outline recommended survey methods for determining the distribution and abundance of *H. johnsonii* at sites under permit review. The methods should be applicable to a broad range of project scales, from a 20-m long dock, to marinas, bridges, and channels several kilometers long.

Problem:

Three aspects make quantitative sampling for *H. johnsonii* difficult: (1) Poor visibility; it is sometimes difficult to see more than 0.1 or even 0.01 m² at a time. (2) Patchy and clumped distribution, with patches as small as 0.01 m², which may be clumped together within a sub-area of the project area. (3) Stratified distribution, with occurrence perhaps limited to a particular depth gradient within a project area.

Recommended Methods:

The most appropriate approach depends on scale, and the amount of expected error depends on the approach. Unless a complete survey of the entire area is done, the estimated distribution and abundance of this species may be significantly in error. With the exception of very small project areas, efficient field sampling may require sampling in two stages. A preliminary visual reconnaissance of the site should be conducted to locate any occurrences of *H. johnsonii*. "The importance of preliminary sampling is probably the most under emphasized principal related to field studies. There is no substitute for it." (Green 1979). Following the preliminary reconnaissance, a more comprehensive sampling, using one of the techniques outlined below, should be initiated.

In situ monitoring for *H. johnsonii* is absolutely necessary. Aerial photography may be used to map distributions of larger canopy-forming species; however, mapping of *H. johnsonii* cannot be done reliably from aerial photos. Because of significant seasonal and annual variation in distribution and abundance of *H. johnsonii*, surveys must be conducted during spring/summer (April-August) period of maximum abundance, and sampling in more than one summer is recommended. Length of time between survey date and actual start of project should consider the potentially rapid turnover and migration of *H. johnsonii*. Personnel conducting the survey should clearly demonstrate that they can distinguish between *H. johnsonii* and *H. decipiens*. Surveys labeled simply as "*Halophila*" are not sufficient.

Deliverables: 1) amount (acres or square meters) impacted, 2) estimate of percent coverage and the species present/absent, 3) site map with seagrass patch or bed locations, 4) size of the patches, and 5) shoot density estimate.

SMALL PROJECT SITES (<0.1 ha, e.g. 10 m by 100 m, such as single-family docks).
Two methods.

1. Provide a site map of submerged lands adjacent to the action area. The site map should include transects approximately every 7.5 m apart, perpendicular to the shore, and for a length 6 m longer than the proposed activity. A preliminary visual reconnaissance is necessary to fill in the information between the transects. Seagrass patches should be identified by species composition and drawn on the site map. Density can be accomplished with random sub-sampling for density within the identified patches. (An overall site map is important since it identifies seagrass habitat, not just existing seagrass patches.) (Mezich 2000).
2. The site is sub-divided into m^2 grids. A complete and intensive mapping of the entire area of concern can be developed by using DGPS, with coordinates provided every m^2 , or every patch >0.01 - $0.1 m^2$, with a tested map accuracy of >50 - 95% . If percent cover is not used, an illustrated, standardized scale of density should be used. Presence-absence should be determined for every m^2 grid cell.

For monitoring project effects, additional information on shoot density, blade length, and flowering, can be collected from a random sub-sample of grids using 25- by 25-cm quadrats or multiple 10- by 10-cm sub-cells within the m^2 grid.

INTERMEDIATE-AREA PROJECT SITES (0.1 to 1 ha, e.g., a 100-m by 100-m marina). A two-step process is required.

- a. Preliminary visual reconnaissance to locate general *H. johnsonii* areas and distribution.
- b. The site should then be surveyed using transects across the dominant spatial gradient (e.g., depth, inshore-offshore, channel-shoal, etc.) of the site. The number of transects and sample intervals should adequately describe distribution and abundance of *H. johnsonii* patches. Besides noting presence-absence, x-y-z diameters of encountered patches should be noted, together with sub-samples of shoot density, blade length, and presence of flowering.

LARGE-AREA PROJECT SITES (>1 ha). Three choices are possible after preliminary visual reconnaissance.

1. Random sampling of points or quadrats within the area.

Sampling at least 1-30% of the total area.

- 2 stages: (1) visual reconnaissance, then stratify, (2) second intensive sampling, with intensity relative to abundance of *H. johnsonii* within the strata.
- single step of 100 -1,000 points/quadrats (min. # = ?).

2. Intensive survey of transects.

Transects across the entire area, sampling at least 1-30% of the total area.

- point-intersects sampling along transects (with the size of a "point" defined, e.g., 5 x 5 or 10 x 10 cm).
- belt transect, of 0.1-2 m width.
- transects randomly located (min. # transects = 10-50 or min. spacing = 50 m).
- regularly-spaced transects (min. # transects = 10-50 or min. spacing = 50 m).
- quadrants at regular intervals along line (min. # = 10-50 or min. spacing = 50 m).

For any of these transect methods, x-y-z diameters of any patches encountered should be measured. At a minimum, presence-absence should be recorded at each point of each quadrat.

3. Combinations of above methods, e.g.,

- a. Intensive mapping in area of primary impact (e.g., within footprint of proposed dock), plus random points in surrounding, potentially affected area.
- b. Stratify from random point sampling, then map intensively in areas of greatest abundance.

It is the position of the Recovery Team, however, that the adoption of a valid survey protocol for identifying Johnson's seagrass be required by permitting agencies in the range of the species. In all seagrass surveys, emphasis should be placed on the identification of seagrass habitat as well as the distribution of currently existing patches. Identifying impacts to seagrass habitat, particularly from large projects, is more important in the long run than the "point-in-time" management approach of avoiding currently existing patches.

References

- Green, R.H. 1979. Sampling design and statistical analysis methods environmental biologists. John. W. and Sons, Inc., New York.
- Mezich, Ron (N.A.B). 2000. Personal Communication. Florida Freshwater and Wildlife Conservation Commission, Marine Resources, Tallahassee, FL.

Attachment D

**National Marine Fisheries Service, Southeast Region
Habitat Conservation Division's Best Management Practices
For Surveying Seagrass for Coastal Construction Planning in Florida
(March 11, 2010 version)**

Time of Year

- Seagrass surveys in Florida should be conducted during June 1 through September 30

Acceptable Methodologies

- In-situ observations are the most accurate way to determine distribution and abundance of seagrass at the scale of most coastal construction project sites and permit applications (Kenworthy 2000; Short et al., 2001).
- Aerial surveys can be of value for coastal construction planning especially when more than one acquisition in that area is available. Aerial surveys can be used as preliminary data especially in cases when the surveys clearly show seagrass is present. In cases where larger species occur in shallow water, they can be particularly useful, however in cases where there are smaller species in deeper water they may have limited utility unless conducted with extreme attention to detail.
- Towed video surveys have limited value for coastal construction planning.
- Destructive sampling such as Petit ponar grabs should only be used in extreme circumstances and may necessitate consultation with NMFS and require a dredge and fill permit.
- The Recommendations for Sampling *Halophila johnsonii* at a Project Site, as provided in the Recovery Plan for Johnson's Seagrass (NMFS, 2002) presents an acceptable seagrass survey methodology, with exception that the survey window should be June 1 through September 30. This methodology is particularly useful because of the consideration of project scale (small = < 0.25 acres; intermediate = 0.25 to 2.5 acres ; large = > 2.5 acres)
- If an alternate methodology for surveying seagrass is considered, the methodology should reflect a statistically appropriate amount of sampling for the scale of the project area.
- Review of available seagrass survey data sets at the project location or at nearby sites (with similar depth and sediment type) should be used to compliment a site-specific survey, but it is important to keep in mind the project scale and the scale of the available data.
- The survey area should a 500-foot area around a project area. In addition, the area should consider setting aside appropriate project buffer (e.g., for dredging activities NMFS may recommend a minimum 100 foot buffer between dredging and seagrass habitats) areas that may be required and other direct and indirect impact areas from side slope equilibration, sedimentation, vessel shading, or reduced water quality from turbidity. Also keep in mind that the regulatory agencies may require a review of alternatives which could trigger a need to survey a larger area, adjacent areas, or additional areas.

Important Considerations

- Note that Johnson's seagrass is essential fish habitat in addition to a federally listed species under the Endangered Species Act. Any adverse effect to this species or modification or destruction of its critical habitat must be coordinated with two NMFS offices: Habitat Conservation Division and Protected Resource Division. Consultation with one office will not meet the requirements of the other office.
- For projects that involve permanent disturbance of the estuarine bottom, e.g., dredge and fill activities, more than one survey during different growing seasons is beneficial.

- Hurricanes can have effects on water quality and hydrology. Depending on the scale of the disturbance, post-hurricane surveys (1 to 2 years after hurricane) can reflect interannual shifts in species composition and declines in density (Steward et al., 2006). Survey information provided immediately post-hurricane or in the next growing season could understate the amount of seagrass habitat at the site.
- Most estuaries have fluctuating water clarity based on tidal stage and seasonal rainfall events. The estuarine bottom may be barely visible during an outgoing tide or after rainfall; however water clarity can greatly improve during an incoming tide or drought periods. Surveys should be planned accordingly to maximize the ability to detect seagrass.
- It is important to recognize seagrass habitats as including not only continuous vegetated beds, but also patchy environments with unvegetated areas between the patches as part of the contiguous habitat (SAFMC, 2009)

Reporting Requirements

- Seagrass Survey Minimum Reporting Requirements include:
 - Survey date(s)
 - Location (latitude and longitude)
 - Name of person who conducted the survey and other representatives present
 - Water body
 - Time of survey
 - Weather conditions
 - Visibility
 - Tidal Stage and tendency (i.e., flood or ebb)
 - Tidal range of site
 - Elevation of seagrass (deepest, shallowest) in reference to the tidal datum or relative to elevation of nearby similar habitats
 - Results of preliminary visual reconnaissance
 - Area (acres or square meters) of proposed impact (total area, including any gaps among existing seagrass cover)
 - Estimate of percent cover and species present/absent
 - Site map that delineates area surveyed and seagrass patches or beds
 - Shoot density estimate
 - Other useful information can include: fishery resource observations, sediment type, and information requested in Unified Mitigation Assessment Method Part I and Part II worksheets (geographic relationship to uplands or other water bodies, significant nearby features, anticipated wildlife utilization, uniqueness, etc.)

NMFS Points of Contact

- NMFS Habitat Conservation Division biologists are available to review seagrass survey methodologies prior to conducting the survey. For Florida, contact:
 - George.Gelsinger@noaa.gov (St. Johns through Indian River Counties)
 - Jocelyn.Kavazian@noaa.gov (St. Lucie through Monroe Counties)
 - Brandon.Howard@noaa.gov (Atlantic Florida Department of Transportation)
 - Mark.Thompson@noaa.gov (Florida panhandle)
 - Mark.Sramek@noaa.gov (Dixie through Collier Counties)
 - David.Rydene@noaa.gov (Gulf of Mexico Florida Department of Transportation)

- If the project is within the range of Johnson's Seagrass, NMFS Protected Resource Division biologists are available to provide technical assistance as well.
Shelley.Norton@noaa.gov (Johnson's Seagrass Coordinator)
Kay.Davy@noaa.gov
Audra.Livergood@noaa.gov
Kel.Logan@noaa.gov

Literature Cited:

- Fonseca, M.S., Kenworthy, W.J., and Thayer, G.W. 1998. Guidelines for the mitigation and restoration of seagrass in the United States and adjacent waters. NOAA COP/Decision Analysis Series. 222p.
- Kenworthy, J.W. 2000. The role of sexual reproduction in maintaining populations of *Halophila decipiens*: implications for the biodiversity and conservation of tropical seagrass ecosystems. *Pacific Conservation Biology* 5: 260-268.
- National Marine Fisheries Service. 2002. Recovery Plan for Johnson's Seagrass (*Halophila johnsonii*). Prepared by the Johnson's Seagrass Recovery Team for the National Marine Fisheries Service, Silver Spring, Maryland. 134 pages.
- Short, F.T., Coles, R.G., Short, C.A. 2001. *Global Seagrass Research Methods*. Elsevier, Amsterdam.
- South Atlantic Fishery Management Council (SAFMC). 2009. Fishery Ecosystem Plan of the South Atlantic Region.
www.safmc.net/ecosystem/Home/EcosystemHome/tabid/435/Default.aspx
- Steward, J.S., Virnstein, R.W., Lasi, M.A., Morris, L.J., Miller, J.D., Hall, L.M., and Tweedale, W.A. 2006. *Estuaries and Coast* 29(6A): 954-965.

Agenda Item #	PROJECT SPONSOR	PROJECT TITLE	Total Cost	Assistance Requested	Average Score
10.1	U.S. Fish and Wildlife Service	Merritt Island Biolab Boat Ramp & Kayak Launch	\$156,540	\$78,270	39.67
10.2	St Johns River Water Management District	Eau Gallie Dredging Ph IB	\$1,501,500	\$750,000	47.33
		TOTALS	\$1,658,040	\$828,270	

2014-2015 Waterway Assistance Program Project Applications

Agenda Item#	COUNTY	PROJECT SPONSOR	PROJECT TITLE	TOTAL COSTS	ASSISTANCE REQUESTED	AVERAGE SCORE
11.19	St. Johns	City of St Augustine	Salt Run Navigation Channel Dredging Ph V	\$400,000.00	\$300,000.00	48.17
11.39	Miami-Dade	City of Miami	Seybold Canal & Wagner Creek Dredging Phase D	\$2,000,000.00	\$1,000,000.00	47.92
11.36	Flagler	City of Palm Coast	Long Creek Nature Preserve Navigation Enhancement	\$20,000.00	\$10,000.00	46.25
11.34	Brevard	City of Melbourne	Melbourne Harbor Channel Dredge Ph II	\$287,165.00	\$143,582.00	46.08
11.28	Duval	City of Jacksonville	Pottsburg Creek Dredge Ph II	\$750,000.00	\$375,000.00	45.92
11.40	Miami-Dade	City of Miami	Dinner Key Marina Dinghy Dock Ph II	\$150,000.00	\$75,000.00	45.92
11.51	Nassau	City of Fernandina Beach	Marina Public Boat Ramp Dredging	\$298,900.00	\$149,450.00	45.92
11.30	Brevard	Brevard County	POW/MIA Park Channel Dredging Ph II	\$305,000.00	\$152,500.00	45.50
11.49	Miami-Dade	Miami-Dade County	Pelican Marina Boat Ramp Renovations Ph I	\$167,000.00	\$60,000.00	45.42
11.41	Miami-Dade	City of Miami	Baywalk Boat Hoists & Floating Dock Regatta Park Ph I	\$40,000.00	\$20,000.00	45.25
11.29	Duval	City of Jacksonville	Sisters Creek Dock Redesign Ph II	\$206,400.00	\$103,200.00	45.17
11.53	Nassau	City of Fernandina Beach	Mooring Field Improvements Ph I	\$20,550.00	\$10,275.00	45.17
11.09	Palm Beach	Palm Beach County	Burt Reynolds Park West Side Redevelopment	\$1,500,000.00	\$750,000.00	45.00
11.18	Broward	City of Pompano Beach	Alsdorf Park Improvements Ph II	\$1,293,831.00	\$646,915.43	44.91
11.24	Duval	City of Jacksonville	County Dock Boat Ramp Ph II	\$102,000.00	\$51,000.00	44.83
11.47	Miami-Dade	Miami-Dade County	Pelican Marina Wet Slips Frames Replacement	\$512,940.00	\$256,470.00	44.83
11.07	Palm Beach	City of Belle Glade	N Marina Basin Dock & Boardwalk Ph II	\$1,130,513.00	\$434,000.00	44.67
11.15	Broward	City of Dania Beach	Dania Beach Municipal Marina Renovations Ph IIC	\$1,234,990.00	\$617,495.00	44.64
11.46	Miami-Dade	Miami-Dade County	Black Point Marina Wet Slips Frames Replacement	\$698,340.00	\$349,170.00	44.50
11.25	Duval	City of Jacksonville	Exchange Club Island Park Ph II	\$226,500.00	\$113,250.00	44.42
11.14	Palm Beach	City of Riviera Beach	Riviera Beach Marina Part B Ph I	\$150,000.00	\$75,000.00	44.33
11.17	Broward	City of Pompano Beach	Intracoastal Water Taxi Station Ph I	\$35,000.00	\$17,500.00	44.33
11.32	Brevard	City of Cocoa	Cocoa Riverfront Park Mooring Field Ph I	\$100,000.00	\$25,000.00	44.25
11.50	Miami-Dade	Miami-Dade County	Matheson Marina Floating Dock Renovations	\$478,516.00	\$239,258.00	44.17
11.10	Palm Beach	Palm Beach County	Waterway Park Development Ph IIB	\$2,509,208.00	\$1,254,604.00	44.08
11.38	Flagler	Town of Marineland	Marineland Marina Phase B construction	\$975,000.00	\$175,000.00	43.92
11.48	Miami-Dade	Miami-Dade County	Pelican Island Day Dock Replacement Ph I	\$74,592.00	\$37,296.00	43.83
11.58	Volusia	City of New Smyrna Beach	New Smyrna Beach Waterfront Promenade Ph I	\$120,000.00	\$60,000.00	43.67
11.27	Duval	City of Jacksonville	Ortega River Mooring Field Ph II	\$300,000.00	\$150,000.00	43.58
11.57	Volusia	City of Holly Hill	Sunrise Park South Dredging & Boat Ramp Ph I	\$65,300.00	\$32,650.00	43.25
11.05	Martin	City of Stuart	City of Stuart Riverwalk Expansion Ph II	\$464,668.00	\$232,334.00	43.17
11.04	St. Lucie	City of Fort Pierce	Melody Lane Fishing Pier Ph IIA	\$425,000.00	\$212,500.00	43.08
11.33	Brevard	City of Melbourne	Marina Towers Land Acquisition	\$1,435,720.00	\$358,930.00	43.08
11.60	Volusia	City of Port Orange	Riverwalk P2 Launch & Boardwalk North A Phase II	\$400,000.00	\$200,000.00	42.67

2014-2015 Waterway Assistance Program Project Applications

11.11	Palm Beach	Palm Beach County	Old Bridge Park Natural Area	\$503,750.00	\$251,875.00	42.58
11.08	Palm Beach	City of Belle Glade	Pavilion Lake Ramp & dredging Ph I	\$65,000.00	\$32,500.00	42.50
11.20	St. Johns	City of St Augustine	Lighthouse Park Boat Ramp Repair	\$60,000.00	\$30,000.00	42.42
11.31	Brevard	City of Cape Canaveral	Banana River Park	\$421,741.00	\$69,668.00	42.42
11.44	Miami-Dade	City of Miami Beach	Normandy Shores Park Seawall	\$450,956.00	\$225,478.00	42.25
11.54	Volusia	City of Edgewater	George Kennedy Park Seawall Restoration Ph I	\$40,000.00	\$20,000.00	42.25
11.22	Duval	City of Atlantic Beach	Marsh Preserves Launch, Fishing & Access Phase II	\$309,000.00	\$150,000.00	42.17
11.56	Volusia	City of Daytona Beach	Halifax River Trail & Pedestrian Underpass	\$542,340.00	\$271,170.00	42.17
11.61	Volusia	City of Port Orange	Riverwalk P3 Waterfront Park North B Phase I	\$200,000.00	\$100,000.00	42.08
11.21	St. Johns	St. Johns County	Vilano Beach Fishing Pier Remediation	\$721,954.00	\$360,970.50	42.00
11.37	Flagler	Flagler County	FCSO Boating Safety Program	\$60,000.00	\$30,000.00	41.92
11.55	Volusia	City of Daytona Beach	Root Canal Bridge & Public Boat Ramp Ph I	\$450,000.00	\$225,000.00	41.92
11.13	Palm Beach	Palm Beach County	Peanut Island Erosion Control & Artificial Reefs	\$333,600.00	\$166,800.00	41.83
11.45	Miami-Dade	City of Miami Beach	Indian Creek Park Seawall	\$1,385,003.00	\$692,501.50	41.83
11.23	Duval	City of Jacksonville	Arlington Lions Club Park Boardwalk Ph II	\$211,500.00	\$105,750.00	41.67
11.42	Miami-Dade	City of Miami	Virginia Key Beach Park Tiki Village	\$33,860.00	\$16,930.00	41.67
11.01	Indian River	City of Vero Beach	Restroom Addition to Riverhouse Ph I	\$15,000.00	\$7,500.00	41.42
11.16	Broward	City of Fort Lauderdale	FLPD Marine Motors Project II	\$89,800.00	\$30,000.00	41.17
11.52	Nassau	City of Fernandina Beach	Marina Welcome Center Deck	\$40,550.00	\$20,275.00	41.17
11.59	Volusia	City of New Smyrna Beach	NSB Maritime Master Plan	\$50,000.00	\$25,000.00	41.08
11.06	Martin	Martin County	St Lucie Inlet Maintenance	\$1,000,000.00	\$500,000.00	41.00
11.26	Duval	City of Jacksonville	Northbank Riverwalk Ph II	\$142,800.00	\$71,400.00	40.50
11.43	Miami-Dade	City of Miami	Virginia Key Beach Park Education Signs	\$18,800.00	\$9,400.00	40.42
11.12	Palm Beach	Palm Beach County	Torrey Island Reef Project	\$236,300.00	\$118,150.00	39.25
11.03	Indian River	Indian River County	Head Island Improvement	\$143,000.00	\$35,750.00	38.92
11.35	Brevard	City of Melbourne	Horse Creek Dredge Ph II	\$919,885.00	\$229,971.00	36.33
11.02	Indian River	Indian River County	Oslo Public Boat Ramp Parking and Dredging	\$960,000.00	\$470,000.00	31.58

66B-2.006 (9) Application Evaluation and Rating Score: Following the presentations, the Board will review the applications and evaluate them using the Waterways Assistance Program Application and Evaluation Worksheets No. 91-25 (a thru f) for Waterways Assistance Program applications. The total points awarded to each application by the Commissioners will be averaged to determine an application's final rating score. The final rating score for each application must equal or exceed 35 points for the application to be considered for funding assistance. Reconsideration of any application with a final rating score of less than 35 points will only occur if the majority of the Commissioners evaluating the project rated the project equal to or exceeding 35 points and two-thirds of the Commissioners vote for reconsideration of the application. Only Applicants that are eligible under Rule 66B-2.0061, F.A.C., "Disaster Relief Applications", shall complete FIND Form No. 91-25F Emergency Re-Construction (effective date 4-24-06).

FLORIDA INLAND NAVIGATION DISTRICT



TO: All FIND Commissioners, Executive Director

FROM: Janet Zimmerman, Assistant Executive Director

DATE: July 9, 2014

SUBJECT: Initial Discussion of Proposed Assistance Program Rule Changes

COMMISSIONERS

E. TYLER CHAPPELL
CHAIR
BROWARD COUNTY

J. CARL BLOW
VICE-CHAIR
ST. JOHNS COUNTY

DONALD J. CUOZZO
TREASURER
MARTIN COUNTY

JONATHAN S. NETTS
SECRETARY
FLAGLER COUNTY

AARON L. BOWMAN
DUVAL COUNTY

T. SPENCER CROWLEY, III
MIAMI-DADE COUNTY

PAUL U. DRITENBAS
INDIAN RIVER COUNTY

CHARLES C. ISIMINGER
PALM BEACH COUNTY

GAIL KAVANAGH
ST. LUCIE COUNTY

SUSANNE McCABE
VOLUSIA COUNTY

JERRY H. SANSOM
BREVARD COUNTY

LYNN A. WILLIAMS
NASSAU COUNTY

MARK T. CROSLY
EXECUTIVE DIRECTOR

JANET ZIMMERMAN
ASSISTANT EXECUTIVE
DIRECTOR

In working with the Assistance Program and listening to the Board discussion over the past few months, staff has prepared the following list of items for additional consideration by the board. Should the Board elect to initiate specific changes to our program rules, staff and our attorney will craft specific language to be considered at our August meeting.

- Revise application forms to move toward a more electronic grant application
- Review public accessible launching, mooring or docking facilities in relation to Public Navigation priority **66B-2.005(6)**
- Consider allowing cities to request proportionate share of the \$100,000 county-wide maritime management plan funds **66B-2.008(5)**
- Remove verbiage limiting funding for replacement vessels **66B-2.008(1)2**

Bid Proposals
DREDGED MATERIAL MANAGEMENT AREA FL-3 CONSTRUCTION CONTRACT

FIRM	TOTAL BASE BID
Harry Pepper & Associates	\$4,115,522.00
Gibbs & Register Inc.	\$4,258,600.00
Barco - Duval Engineering Inc.	\$4,399,300.00
CPR Contracting, LLC	\$4,855,276.00
WRS Infrastructure & Environment Inc.	\$4,996,000.00
ENGINEERS ESTIMATE	\$5,105,400.00

* lowest to highest bids pending verification

July 1, 2014 2pm

SECTION 00 41 63A

BID SCHEDULE



ALL BID ITEMS SHALL INCLUDE ALL COSTS FOR FURNISHING TO THE OWNER ALL MATERIALS, EQUIPMENT AND SUPPLIES, PERMITS, AND FOR ALL COSTS INCURRED IN PROVIDING ALL WORK SHOWN ON THE FL-3 DREDGED MATERIAL MANAGEMENT AREA PROJECT DRAWINGS AND OUTLINED IN THE CONTRACT SPECIFICATIONS FOR THE CONSTRUCTION.

ITEM	DESCRIPTION	UNITS	QUANTITY	UNIT COST	TOTAL COST
LUMP SUM					
01	Insurance	LS	1	48,524. ⁰⁰	48,524. ⁰⁰
02	Mobilization and Demobilization	LS	1	16,500. ⁰⁰	16,500. ⁰⁰
03	Environmental Protection and Erosion Control	LS	1	18,400. ⁰⁰	18,400. ⁰⁰
04	Construction, Payment, and As-Built Surveys	LS	1	175,000. ⁰⁰	175,000. ⁰⁰
05	Access Road Maintenance	LS	1	43,902. ⁰⁰	43,902. ⁰⁰
06	Demolition	LS	1	10,000. ⁰⁰	10,000. ⁰⁰
07	Construction Materials Testing	LS	1	199,300. ⁰⁰	199,300. ⁰⁰
08	Clearing and Grubbing DMMA Area	LS	1	391,425. ⁰⁰	391,425. ⁰⁰
09	Clearing and Grubbing Bypass Road	LS	1	68,000. ⁰⁰	68,000. ⁰⁰
10	Toe Drain Gravel, Filter Fabric, and 6-inch Collector Pipes	LS	1	394,816. ⁰⁰	394,816. ⁰⁰
11	Stabilized Bypass Road Construction	LS	1	111,363. ⁰⁰	111,363. ⁰⁰
12	Roadway Stabilization	LS	1	145,358. ⁰⁰	145,358. ⁰⁰
13	Foundation Preparation	LS	1	30,000. ⁰⁰	30,000. ⁰⁰
14	Pre-cast Drainage Inlets and 10-inch HDPE Drainage Pipe	LS	1	45,507. ⁰⁰	45,507. ⁰⁰
15	Drainage Inlets Erosion Protection (#4 Stone)	LS	1	20,624. ⁰⁰	20,624. ⁰⁰
16	Erosion Control Matting for Perimeter Ditch	LS	1	68,413. ⁰⁰	68,413. ⁰⁰
17	Culvert Construction	LS	1	34,253. ⁰⁰	34,253. ⁰⁰
18	Overflow Weir	LS	1	47,496. ⁰⁰	47,496. ⁰⁰
19	Steel Box Weirs	LS	1	174,331. ⁰⁰	174,331. ⁰⁰
20	Cast-in-Place Concrete Weir Foundation	LS	1	34,755. ⁰⁰	34,755. ⁰⁰
21	Weir Discharge Pipe	LS	1	129,301. ⁰⁰	129,301. ⁰⁰
22	Rip-Rap Splash Pads with Filter Fabric	LS	1	31,316. ⁰⁰	31,316. ⁰⁰
23	Timber Walkway and Timber Piles	LS	1	42,017. ⁰⁰	42,017. ⁰⁰
24	Grassing	LS	1	116,160. ⁰⁰	116,160. ⁰⁰
UNIT COST					
25	Dike, Perimeter Road, and Perimeter Ditch Construction	CY	285,000	4. ⁶²	1,316,700. ⁰⁰
26	Unsuitable Material Placement (Wetland Clay Material)	CY	23,600	4. ⁷⁰	110,920. ⁰⁰
27	Topsoil Placement	CY	32,500	2. ⁷⁰	87,750. ⁰⁰
28	Fencing/Gate	LF	2,900	18. ⁹³	54,897. ⁰⁰

TOTAL BASE BID (ITEMS 01 THRU 28) \$ 4,115,522.⁰⁰

TOTAL BASE BID (WRITTEN)

FOUR MILLION ONE HUNDRED FIFTEEN THOUSAND
FIVE HUNDRED TWENTY TWO

Dollars

AMOUNTS SHALL BE SHOWN IN BOTH WORDS AND NUMBERS. IN CASE OF DISCREPANCIES, THE AMOUNT SHOWN IN WORDS SHALL GOVERN FOR EACH BID ITEM AND TOTAL BID.

Signature of Bidder:

[Handwritten Signature]

Date: July 1, 2014

Notes:

- (1) Quantities are estimated. Actual quantities may vary.
 (2) All bids must be for the entire work and must have each blank space completed.

Bidder has to sign below that they have read and understood all addendums related to this project. Failure to acknowledge any addendum issued may disqualify the Bidder.

Addendum No.1	Date of Receipt: 5/20/14
Addendum No.2	Date of Receipt: 6/02/14
Addendum No.3	Date of Receipt: 6/20/14
Addendum No. 4	Date of Receipt: 6/25/14

NOTICE TO ALL BIDDERS

1	The District reserves the right to waive any informality in any bid, to reject any and all bids, and to delete any part of any of the above items.
2	Changes in the Contract Price and Contract Time require prior authorization in writing from the District and the Engineer, in the form of a Change Order. The Contractor is responsible for verification of all bid quantities and to report to the Engineer any discrepancies found prior to ordering materials and or equipment for construction.
3	Bid prices for the various work items are intended to establish a total price for completing the project in its entirety. The Contractor shall include in the Bid, any item for which a separate pay item has not been established in the Bid Form (under any related pay item), to reflect the total price for completing the project in its entirety.
4	Quantities shown are estimated. Actual quantity may vary due to estimated excavation or fill.
5	Contractor shall meet requirements of all applicable permits and codes (in their current edition).
6	The District will award the bid to the lowest qualified bidder.

Bidder: Harry Pepper & Associates, Inc.

By: David Pepper

Title: President and CEO

Harry Pepper & Associates, Inc.
 Name of Bidder

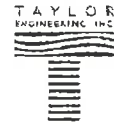

 Signature of Bidder

Date: July 1, 2014

Gibbs +
Register
Inc

SECTION 00 41 63A

BID SCHEDULE



IS SHALL INCLUDE ALL COSTS FOR FURNISHING TO THE OWNER ALL MATERIALS, EQUIPMENT AND SUPPLIES, PERMITS, AND FOR ALL COSTS INCURRED IN PROVIDING ALL WORK SHOWN ON THE FL-3 DREDGED MATERIAL MANAGEMENT AREA PROJECT DRAWINGS AND OUTLINED IN THE CONTRACT SPECIFICATIONS FOR THE CONSTRUCTION.

ITEM	DESCRIPTION	UNITS	QUANTITY	UNIT COST	TOTAL COST
LUMP SUM					
01	Insurance	LS	1	\$ 5,000 ⁰⁰	\$ 5,000 ⁰⁰
02	Mobilization and Demobilization	LS	1	\$ 350,000 ⁰⁰	\$ 350,000 ⁰⁰
03	Environmental Protection and Erosion Control	LS	1	\$ 70,000 ⁰⁰	\$ 70,000 ⁰⁰
04	Construction, Payment, and As-Built Surveys	LS	1	\$ 60,000 ⁰⁰	\$ 60,000 ⁰⁰
05	Access Road Maintenance	LS	1	\$ 20,000 ⁰⁰	\$ 20,000 ⁰⁰
06	Demolition	LS	1	\$ 170,000 ⁰⁰	\$ 170,000 ⁰⁰
07	Construction Materials Testing	LS	1	\$ 60,000 ⁰⁰	\$ 60,000 ⁰⁰
08	Clearing and Grubbing DMMA Area	LS	1	\$ 300,000 ⁰⁰	\$ 300,000 ⁰⁰
09	Clearing and Grubbing Bypass Road	LS	1	\$ 50,000 ⁰⁰	\$ 50,000 ⁰⁰
10	Toe Drain Gravel, Filter Fabric, and 6-inch Collector Pipes	LS	1	\$ 380,000 ⁰⁰	\$ 380,000 ⁰⁰
11	Stabilized Bypass Road Construction	LS	1	\$ 60,000 ⁰⁰	\$ 60,000 ⁰⁰
12	Roadway Stabilization	LS	1	\$ 150,000 ⁰⁰	\$ 150,000 ⁰⁰
13	Foundation Preparation	LS	1	\$ 130,000 ⁰⁰	\$ 130,000 ⁰⁰
14	Pre-cast Drainage Inlets and 10-inch HDPE Drainage Pipe	LS	1	\$ 100,000 ⁰⁰	\$ 100,000 ⁰⁰
15	Drainage Inlets Erosion Protection (#4 Stone)	LS	1	\$ 20,000 ⁰⁰	\$ 20,000 ⁰⁰
16	Erosion Control Matting for Perimeter Ditch	LS	1	\$ 30,000 ⁰⁰	\$ 30,000 ⁰⁰
17	Culvert Construction	LS	1	\$ 60,000 ⁰⁰	\$ 60,000 ⁰⁰
18	Overflow Weir	LS	1	\$ 80,000 ⁰⁰	\$ 80,000 ⁰⁰
19	Steel Box Weirs	LS	1	\$ 230,000 ⁰⁰	\$ 230,000 ⁰⁰
20	Cast-in-Place Concrete Weir Foundation	LS	1	\$ 80,000 ⁰⁰	\$ 80,000 ⁰⁰
21	Weir Discharge Pipe	LS	1	\$ 170,000 ⁰⁰	\$ 170,000 ⁰⁰
22	Rip-Rap Splash Pads with Filter Fabric	LS	1	\$ 20,000 ⁰⁰	\$ 20,000 ⁰⁰
23	Timber Walkway and Timber Piles	LS	1	\$ 100,000 ⁰⁰	\$ 100,000 ⁰⁰
24	Grassing	LS	1	\$ 450,000 ⁰⁰	\$ 450,000 ⁰⁰
UNIT COST					
25	Dike, Perimeter Road, and Perimeter Ditch Construction	CY	285,000	\$ 3 ⁰⁰	\$ 855,000 ⁰⁰
26	Unsuitable Material Placement (Wetland Clay Material)	CY	23,600	\$ 4 ⁰⁰	\$ 94,400 ⁰⁰
27	Topsoil Placement	CY	32,500	\$ 3 ⁰⁰	\$ 97,500 ⁰⁰
28	Fencing/Gate	LF	2,900	\$ 23 ⁰⁰	\$ 66,700 ⁰⁰

TOTAL BASE BID (ITEMS 01 THRU 28) \$ 4,258,600⁰⁰

TOTAL BASE BID (WRITTEN)

FOUR MILLION-TWO HUNDREDS FIFTY EIGHT THOUSAND SIX HUNDRED & 00/100 Dollars

AMOUNTS SHALL BE SHOWN IN BOTH WORDS AND NUMBERS. IN CASE OF DISCREPANCIES, THE AMOUNT SHOWN IN WORDS SHALL GOVERN FOR EACH BID ITEM AND TOTAL BID.

Signature of Bidder:

Theodore Ferguson, President

Date: June 10, 2014

Barco-
Duval
Engineering
Inc

SECTION 00 41 63A

BID SCHEDULE



SHALL INCLUDE ALL COSTS FOR FURNISHING TO THE OWNER ALL MATERIALS, EQUIPMENT AND SUPPLIES, PERMITS, AND FOR ALL COSTS INCURRED IN PROVIDING ALL WORK SHOWN ON THE FL-3 DREDGED MATERIAL MANAGEMENT AREA PROJECT DRAWINGS AND OUTLINED IN THE CONTRACT SPECIFICATIONS FOR THE CONSTRUCTION.

ITEM	DESCRIPTION	UNITS	QUANTITY	UNIT COST	TOTAL COST
LUMP SUM					
01	Insurance	LS	1	27800	27800
02	Mobilization and Demobilization	LS	1	702620	702620
03	Environmental Protection and Erosion Control	LS	1	44500	44500
04	Construction, Payment, and As-Built Surveys	LS	1	88000	88000
05	Access Road Maintenance	LS	1	117000	117000
06	Demolition	LS	1	10200	10200
07	Construction Materials Testing	LS	1	58100	58100
08	Clearing and Grubbing DMMA Area	LS	1	58400	58400
09	Clearing and Grubbing Bypass Road	LS	1	6300	6300
10	Toe Drain Gravel, Filter Fabric, and 6-inch Collector Pipes	LS	1	416300	416300
11	Stabilized Bypass Road Construction	LS	1	84600	84600
12	Roadway Stabilization	LS	1	130000	130000
13	Foundation Preparation	LS	1	27200	27200
14	Pre-cast Drainage Inlets and 10-inch HDPE Drainage Pipe	LS	1	74000	74000
15	Drainage Inlets Erosion Protection (#4 Stone)	LS	1	42700	42700
16	Erosion Control Matting for Perimeter Ditch	LS	1	22300	22300
17	Culvert Construction	LS	1	41000	41000
18	Overflow Weir	LS	1	64200	64200
19	Steel Box Weirs	LS	1	227600	227600
20	Cast-in-Place Concrete Weir Foundation	LS	1	33500	33500
21	Weir Discharge Pipe	LS	1	122000	122000
22	Rip-Rap Splash Pads with Filter Fabric	LS	1	12300	12300
23	Timber Walkway and Timber Piles	LS	1	67800	67800
24	Grassing	LS	1	198400	198400
UNIT COST					
25	Dike, Perimeter Road, and Perimeter Ditch Construction	CY	285,000	450	1,282,500
26	Unsuitable Material Placement (Wetland Clay Material)	CY	23,600	550	12,980
27	Topsoil Placement	CY	32,500	950	30,875
28	Fencing/Gate	LF	2,900	21	60,900

TOTAL BASE BID (ITEMS 01 THRU 28) \$ 4,399,300

TOTAL BASE BID (WRITTEN)

Four million three hundred ninety nine
three hundred Dollars

AMOUNTS SHALL BE SHOWN IN BOTH WORDS AND NUMBERS. IN CASE OF DISCREPANCIES, THE AMOUNT SHOWN IN WORDS SHALL GOVERN FOR EACH BID ITEM AND TOTAL BID.

Signature of Bidder:

Kathy Barco Jossim, President

BID SCHEDULE

00 41 63A Page 1 of 2

Date: 7/1/14

Folks
7/1/14

CPR
Contracting
LLC

SECTION 00 41 63A

BID SCHEDULE



ALL BID ITEMS SHALL INCLUDE ALL COSTS FOR FURNISHING TO THE OWNER ALL MATERIALS, EQUIPMENT AND SUPPLIES, PERMITS, AND FOR ALL COSTS INCURRED IN PROVIDING ALL WORK SHOWN ON THE FL-3 DREDGED MATERIAL MANAGEMENT AREA PROJECT DRAWINGS AND OUTLINED IN THE CONTRACT SPECIFICATIONS FOR THE CONSTRUCTION.

ITEM	DESCRIPTION	UNITS	QUANTITY	UNIT COST	TOTAL COST
LUMP SUM					
01	Insurance	LS	1	70,000.00	70,000.00
02	Mobilization and Demobilization	LS	1	76,965.00	76,965.00
03	Environmental Protection and Erosion Control	LS	1	110,671.00	110,671.00
04	Construction, Payment, and As-Built Surveys	LS	1	205,998.00	205,998.00
05	Access Road Maintenance	LS	1	102,362.00	102,362.00
06	Demolition	LS	1	46,652.00	46,652.00
07	Construction Materials Testing	LS	1	59,030.00	59,030.00
08	Clearing and Grubbing DMMA Area	LS	1	74,591.00	74,591.00
09	Clearing and Grubbing Bypass Road	LS	1	31,254.00	31,254.00
10	Toe Drain Gravel, Filter Fabric, and 6-inch Collector Pipes	LS	1	56,182.00	56,182.00
11	Stabilized Bypass Road Construction	LS	1	169,384.00	169,384.00
12	Roadway Stabilization	LS	1	362,166.00	362,166.00
13	Foundation Preparation	LS	1	172,375.00	172,375.00
14	Pre-cast Drainage Inlets and 10-inch HDPE Drainage Pipe	LS	1	50,955.00	50,955.00
15	Drainage Inlets Erosion Protection (#4 Stone)	LS	1	115,771.00	115,771.00
16	Erosion Control Matting for Perimeter Ditch	LS	1	36,705.00	36,705.00
17	Culvert Construction	LS	1	94,652.00	94,652.00
18	Overflow Weir	LS	1	92,411.00	92,411.00
19	Steel Box Weirs	LS	1	286,534.00	286,534.00
20	Cast-in-Place Concrete Weir Foundation	LS	1	29,291.00	29,291.00
21	Weir Discharge Pipe	LS	1	203,254.00	203,254.00
22	Rip-Rap Splash Pads with Filter Fabric	LS	1	199,521.00	199,521.00
23	Timber Walkway and Timber Piles	LS	1	100,307.00	100,307.00
24	Grassing	LS	1	115,449.00	115,449.00
UNIT COST					
25	Dike, Perimeter Road, and Perimeter Ditch Construction	CY	285,000	4.00	1,140,000.00
26	Unsuitable Material Placement (Wetland Clay Material)	CY	23,600	9.00	212,400.00
27	Topsoil Placement	CY	32,500	4.00	1,300,000.00
28	Fencing/Gate	LF	2,900	30.00	87,000.00

TOTAL BASE BID (ITEMS 01 THRU 28) \$ 4,855,276.00

TOTAL BASE BID (WRITTEN)

FOUR MILLION EIGHT HUNDRED FIFTY FIVE THOUSAND TWO HUNDRED SEVENTY-SIX DOLLARS AND NO CENTS

AMOUNTS SHALL BE SHOWN IN BOTH WORDS AND NUMBERS. IN CASE OF DISCREPANCIES, THE AMOUNT SHOWN IN WORDS SHALL GOVERN FOR EACH BID ITEM AND TOTAL BID.

Signature of Bidder:

Date:

6/30/14

WRS
Infrastructure
+ Environment
Inc



SECTION 00 41 63A

BID SCHEDULE



ALL BID ITEMS SHALL INCLUDE ALL COSTS FOR FURNISHING TO THE OWNER ALL MATERIALS, EQUIPMENT AND SUPPLIES, PERMITS, AND FOR ALL COSTS INCURRED IN PROVIDING ALL WORK SHOWN ON THE FL-3 DREDGED MATERIAL MANAGEMENT AREA PROJECT DRAWINGS AND OUTLINED IN THE CONTRACT SPECIFICATIONS FOR THE CONSTRUCTION.

ITEM	DESCRIPTION	UNITS	QUANTITY	UNIT COST	TOTAL COST
LUMP SUM					
01	Insurance	LS	1	\$15,500.00	\$15,500.00
02	Mobilization and Demobilization	LS	1	\$284,000.00	\$284,000.00
03	Environmental Protection and Erosion Control	LS	1	\$117,000.00	\$117,000.00
04	Construction, Payment, and As-Built Surveys	LS	1	\$172,000.00	\$172,000.00
05	Access Road Maintenance	LS	1	\$80,000.00	\$80,000.00
06	Demolition	LS	1	\$39,000.00	\$39,000.00
07	Construction Materials Testing	LS	1	\$110,000.00	\$110,000.00
08	Clearing and Grubbing DMMA Area	LS	1	\$236,000.00	\$236,000.00
09	Clearing and Grubbing Bypass Road	LS	1	\$40,000.00	\$40,000.00
10	Toe Drain Gravel, Filter Fabric, and 6-inch Collector Pipes	LS	1	\$386,000.00	\$386,000.00
11	Stabilized Bypass Road Construction	LS	1	\$89,000.00	\$89,000.00
12	Roadway Stabilization	LS	1	\$509,000.00	\$509,000.00
13	Foundation Preparation	LS	1	\$26,000.00	\$26,000.00
14	Pre-cast Drainage Inlets and 10-inch HDPE Drainage Pipe	LS	1	\$145,000.00	\$145,000.00
15	Drainage Inlets Erosion Protection (#4 Stone)	LS	1	\$105,000.00	\$105,000.00
16	Erosion Control Matting for Perimeter Ditch	LS	1	\$28,000.00	\$28,000.00
17	Culvert Construction	LS	1	\$69,000.00	\$69,000.00
18	Overflow Weir	LS	1	\$96,000.00	\$96,000.00
19	Steel Box Weirs	LS	1	\$357,000.00	\$357,000.00
20	Cast-in-Place Concrete Weir Foundation	LS	1	\$91,000.00	\$91,000.00
21	Weir Discharge Pipe	LS	1	\$300,000.00	\$300,000.00
22	Rip-Rap Splash Pads with Filter Fabric	LS	1	\$20,000.00	\$20,000.00
23	Timber Walkway and Timber Piles	LS	1	\$84,000.00	\$84,000.00
24	Grassing	LS	1	\$265,000.00	\$265,000.00
UNIT COST					
25	Dike, Perimeter Road, and Perimeter Ditch Construction	CY	285,000	\$2.80	\$798,000.00
26	Unsuitable Material Placement (Wetland Clay Material)	CY	23,600	\$9.75	\$230,100.00
27	Topsoil Placement	CY	32,500	\$6.60	\$214,500.00
28	Fencing/Gate	LF	2,900	\$31.00	\$89,900.00

TOTAL BASE BID (ITEMS 01 THRU 28) \$ \$4,996,000.00

TOTAL BASE BID (WRITTEN)

four million, nine hundred ninety six thousand dollars and 00/100 cents

Dollars

AMOUNTS SHALL BE SHOWN IN BOTH WORDS AND NUMBERS. IN CASE OF DISCREPANCIES, THE AMOUNT SHOWN IN WORDS SHALL GOVERN FOR EACH BID ITEM AND TOTAL BID.

Signature of Bidder: 

Date: 01 JUL 2014

The Law Offices of
BRETON, LYNCH, EUBANKS & SUAREZ-MURIAS, P.A.

Peter L. Breton
 Francis X. J. Lynch
 John R. Eubanks, Jr.
 Marta M. Suarez-Murias
 Robert J. Sniffen – Of Counsel

www.blesmlaw.com
 Sender's Direct Line: (561) 721-4003
 E-Mail: pbreton@blesmlaw.com

1209 North Olive Avenue
 West Palm Beach, FL 33401-3515
 Phone: (561) 721-4000
 Facsimile: (561) 721-4001

June 17, 2014

Mark Crosley, Executive Director
 Florida Inland Navigation District
 1314 Marcinski Road
 Jupiter, FL 33477-9498

Re: Request for Increase in Hourly Billing Rate

Dear Mark:

I am requesting an increase in my hourly rate from \$180 to \$200. My current hourly rate has been in effect since the beginning of my representation of FIND in 2007. In fact, this rate has remained unchanged since 2004, when my predecessor, Tom Sheehan, last received an increase.

Pursuant to §287.059, F.S., state agencies and certain other governmental entities, including multicounty special districts such as FIND, are required to use the standard fee schedule for private attorney services established by the Attorney General,¹ unless the agency head waives the schedule.² Under the current standard fee schedule, the maximum hourly rate allowed for my representation of FIND is \$200. So this request is in line with the rates charged to other governmental agencies and does not require a waiver.

Because of the impact of the Great Recession on the District's tax base and revenues, I have not requested an increase to my hourly rate up to now, even as rates charged to other clients over the past several years have steadily risen. The requested increase is \$20 per hour, or 11.1% above the current rate of \$180. My standard hourly rate for non-governmental clients is \$350, so even with the \$20 increase, the proposed new rate will represent a 43% discount from my standard rate.

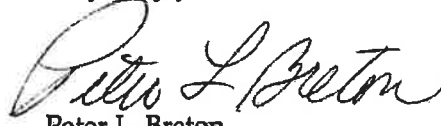
¹ Under Rule 2-37.030, Florida Administrative Code, "Specialized attorney services," which are limited to admiralty, copyright, patent, trademark, international communications, media, bond and securities law may be billed up to \$250 per billable hour. All other attorney services may be billed up to \$200 per billable hour. These rates have not been increased by the Attorney General since 2008.

² All agencies, when contracting for private attorney services, must use the standard fee schedule for private attorney services as established by the Attorney General unless the head of the agency waives use of the schedule and sets forth the reasons for deviating from the schedule in writing to the Attorney General.

Mark Crosley, Executive Director
Florida Inland Navigation District
June 17, 2014
Page 2

As you may be aware, I have been admitted to the Florida Bar for over 30 years, have an AV Preeminent Peer Review Rating by Martindale-Hubbell, and have been Florida Bar Certified in Real Estate Law since 1996. I believe, and I hope you and the Board will agree, that this modest increase is reasonable and appropriate given my qualifications, experience and responsiveness to the needs of the District. I would ask that this request be presented to the Board at the July meeting.

Very truly yours,



Peter L. Breton



**FLORIDA DEPARTMENT OF
ENVIRONMENTAL PROTECTION**

Hugh Taylor Birch State Park
3109 E. Sunrise Blvd.
Ft. Lauderdale, FL. 33304

RICK SCOTT
GOVERNOR

CARLOS LOPEZ-CANERA
LT. GOVERNOR

HERSCHEL T. VINYARD JR.
SECRETARY

June 23, 2014

REC'D *K*

JUN 26 2014

Florida Inland
Navigation District

Mr. Mark Crosley
Executive Director
Florida Inland Navigation District
1314 Marcinski Road
Jupiter, FL 33477-9427

RE: Hugh Taylor Birch State Park - FIND Project #DEP-13-78
Letter dated June 17, 2014

Dear Mr. Crosley:

Please accept this letter as confirmation of our Department's intent to pursue District grant funding for this project. The unanticipated delay resulted from negotiations between Broward County and our Department over language contained in a grant agreement from the Broward Boating Improvement Program. It is this grant that will be used to satisfy our matching funds requirement under the F.I.N.D. grant. This unforeseen delay caused us to miss your April 1, 2014 deadline. Now that we have completed this initial agreement with Broward County, future agreements for Phase II should not be a problem.

Please accept my sincere apology for this delay. I would like to request that you please present this letter to the Board for their consideration. We are still very committed to moving forward with you on this project.

If you have any questions or need additional information, please don't hesitate to contact me.

Sincerely,

James E. Gibson
Park Manager
Hugh Taylor Birch State Park
3109 East Sunrise Boulevard
Fort Lauderdale, FL 33304
(954) 468-2791

Cc Amanda Sanford, FDEP
Dist.
File

Mark Crosley

From: Peter Breton <pbreton@blesmlaw.com>
Sent: Wednesday, May 07, 2014 4:34 PM
To: Mark Crosley
Subject: RE: SJ-14 test dig follow up

We have to be aware of Sec. 253.03(10), F.S., which reads:

(10)The Board of Trustees of the Internal Improvement Trust Fund and the state through any of its agencies are hereby prohibited from levying any charge, by whatever name known, or attaching any lien, on any and all materials dredged from state sovereignty tidal lands or submerged bottom lands or on the lands constituting the spoil areas on which such dredged materials are placed, except as otherwise provided for in this subsection, when such materials are dredged by or on behalf of the United States or the local sponsors of active federal navigation projects in the pursuance of the improvement, construction, maintenance, and operation of such projects or by a public body authorized to operate a public port facility (all such parties referred to herein shall hereafter be called "public body") in pursuance of the improvement, construction, maintenance, and operation of such facility, including any public transfer and terminal facilities, which actions are hereby declared to be for a public purpose. The term "local sponsor" means the local agency designated pursuant to an act of Congress to assume a portion of the navigation project costs and duties. Active federal navigation projects are those congressionally approved projects which are being performed by the United States Army Corps of Engineers or maintained by the local sponsors.

(a)Except for beach nourishment seaward of existing lines of vegetation on privately owned or publicly owned uplands fronting on the waters of the Atlantic Ocean or Gulf of Mexico and authorized pursuant to the provisions of part I of chapter 161, no materials dredged from state sovereignty tidal or submerged bottom lands by a public body shall be deposited on private lands until:

1.The United States Army Corps of Engineers or the local sponsor has first certified that no public lands are available within a reasonable distance of the dredging site; and

2.The public body has published notice of its intention to utilize certain private lands for the deposit of materials, in a newspaper published and having general circulation in the appropriate county at least three times within a 60-day period prior to the date of the scheduled deposit of any such material, and therein advised the general public of the opportunity to bid on the purchase of such materials for deposit on the purchaser's designated site, provided any such deposit shall be at no increased cost to the public body. Such notice shall state the terms, location, and conditions for receipt of bids and shall state that the public body shall accept the highest responsible bid. All bids shall be submitted to the Board of Trustees of the Internal Improvement Trust Fund. All moneys obtained from such purchases of materials shall be remitted forthwith to the Board of Trustees of the Internal Improvement Trust Fund. Compliance with this subsection shall vest, without any obligation, full title to the materials in the owner of the land where deposited.

(b)When public lands on which are deposited materials dredged from state sovereignty tidal or submerged bottom lands by the public body are sold or leased for a period in excess of 20 years, which term includes any options to a private party, 50 percent of any remuneration received shall forthwith be remitted to the Board of Trustees of the Internal Improvement Trust Fund and the balance shall be retained by the public body owning the land.

(c)Any materials which have been dredged from state sovereignty tidal or submerged bottom lands by the public body and deposited on public lands may be removed by the public body to private lands or interests only after due advertisement for bids, which means a notice published at least three times within a 60-day period in a newspaper published and having general circulation in the appropriate county. The purchase price submitted by the highest responsible bidder shall be remitted to the Board of Trustees of the Internal Improvement Trust Fund. If no bid is received, the public body shall have the right to fully

convey title to, and dispose of, any such material on its land, with no requirement of payment to the Board of Trustees of the Internal Improvement Trust Fund.

(d)Notwithstanding the provisions of paragraphs (a)-(c), the Board of Trustees of the Internal Improvement Trust Fund shall allow private or public entities to remove, at no charge and with no public notice requirements, spoil site material dredged from state sovereignty tidal lands or submerged bottom lands and to place the material upon public or private lands when:

1. Such removal and placement is done pursuant to a spoil site rejuvenation plan the board of trustees approves; and

2. The board of trustees finds that the removal and placement is in the public interest and would rejuvenate a site for continued spoil disposal. The board of trustees may give priority to requests for spoil site material, which would result in the environmental restoration or enhancement of the new placement site.

(e)Nothing in this subsection shall affect any preexisting contract or permit to engage in dredging of materials from state sovereignty tidal and submerged bottom lands, nor shall it be construed to void any preexisting agreement or lien against the lands upon which dredged materials have been placed or to have any retroactive effect.

* * * * *

Mark, back in 2007, David and I were discussing a "spoil site rejuvenation plan" per paragraph (10)(d)1. with Jon Moyle, Jr. (I will forward the email to you), but I don't think anything ever came of it. I don't believe we ever got a spoil site rejuvenation plan approved by the Board of Trustees of the Internal Improvement Trust Fund. It is something we should resurrect and get JCM to follow through with.

In the absence of any spoil site rejuvenation plan, we must comply with paragraph (10)(c), which allows the spoil to be removed to private land if there is a public advertisement for bids, 3 times in the county. The highest bidder must be selected and the money paid to TIITF. If no bids are received, then the District can convey and dispose of the spoil with no payment to TIITF. I suggest that we initiate the advertisement for bids and Pulte can put in a bid. If no one else puts in a bid, it can take the spoil and we must turn over the funds to TIITF. If Pulte wants to take a chance, it can monitor whether anyone else puts in a bid. If someone else bids, it can put in its bid before the deadline. If no one else bids, it can withhold its bid. Then the District can contract to allow it to take the spoil on whatever terms you negotiate. If they'll do it for free, that's fine. If they agree to pay the District something, then the District gets to keep the payment.

Sincerely,

Peter L. Breton

Breton, Lynch, Eubanks & Suarez-Murias, P.A.

1209 North Olive Avenue

West Palm Beach, FL 33401

561-721-4003

561-721-4001 (Facsimile)

Tax Advice Disclosure: To ensure compliance with requirements imposed by the IRS under Circular 230, we inform you that any U.S. federal tax advice contained in this communication (including any attachments), unless otherwise specifically stated, was not intended or written to be used, and cannot be used, for the purpose of (1) avoiding penalties under the Internal Revenue Code or (2) promoting, marketing or recommending to another party any matters addressed herein.

The information contained in this electronic mail transmission may be attorney/client privileged and confidential. It is intended only for the use of the individual or entity named above. If the reader of this message is not the intended recipient, you are hereby notified that any dissemination, distribution or copy of this communication is strictly prohibited. If you have received this communication in error, please notify us immediately by telephone collect at 561-721-4000. Thank you.

From: Mark Crosley [mailto:mcrosley@aicw.org]

Sent: Wednesday, May 07, 2014 11:31 AM

To: Peter Breton

Subject: FW: SJ-14 test dig follow up

Peter:

I also have a private interest desiring to remove material from SJ-14 within the next few months...

Can you check what the regulations say about this type of activity....

I would argue that FIND looks at this material as a liability when it's taking up space in our DMMA and we'd like to remove it anyway we can...

Sometimes we can find someone to pay us for it, often we have to pay to remove it...

Do I have different requirements working with a private contractor? IF you recall, the Board has authorized Executive Authority for the removal of up to 20,000 cu/yds of material.

Thanks!

Sincerely,

Mark Crosley
Executive Director

Florida Inland Navigation District
1314 Marcinski Road
Jupiter, FL 33477-9498

561-627-3386
561-624-6480 FAX

From: Justin Dudley [mailto:Justin.Dudley@Pulte.com]

Sent: Monday, April 28, 2014 3:00 PM

To: Mark Crosley

Cc: Justin Dudley

Subject: RE: SJ-14 test dig follow up

Hello Mark,

I was touching base to see if you had received the email below. I attempted a call last Friday, but understand you were out of the office. Let me know if easier to discuss by phone.

I hope all is well.



PulteGroup
JUSTIN DUDLEY
Land Project Manager
North Florida Division
124 Del Webb Parkway
Ponte Vedra, Florida 32081
office (904) 217-0005 x23
cell (904) 778-6321
fax (904) 217-0750
Justin.Dudley@Pulte.com

Mark Crosley

From: Justin Dudley <Justin.Dudley@Pulte.com>
Sent: Wednesday, May 14, 2014 11:02 AM
To: Mark Crosley
Subject: RE: SJ-14 test dig follow up

Hello Mark,

We met with the SJRWMD yesterday and they were amenable to the concept of us using the trail road on the Nocatee property between you and I. I would like to proceed with an agreement between myself and Nocatee for the temporary access road, but not until I further the process between you and I. The temporary access road will require us to submit some engineering as part of the agreement for erosion control on that trail road over unimproved lands. I'm not certain if we need to consider engineering for your site as well, or if that will already be included in your purchase agreements.

Just let me know when you think we are ready to proceed to the next step and I will try to plan both in conjunction with one another.

Thanks again.


JUSTIN DUDLEY
 Land Project Manager
 North Florida Division
 124 Del Webb Parkway
 Ponte Vedra, Florida 32081
 office (904) 217-0005 x23
 cell (904) 778-6321
 fax (904) 217-0750
Justin.Dudley@Pulte.com

From: Mark Crosley [mailto:mcrosley@aicw.org]
Sent: Thursday, May 08, 2014 10:46 AM
To: Justin Dudley
Cc: Mark Tamblyn
Subject: RE: SJ-14 test dig follow up

Thanks Justin...

Sincerely,

Mark Crosley
 Executive Director

Florida Inland Navigation District
 1314 Marcinski Road
 Jupiter, FL 33477-9498

561-627-3386
 561-624-6480 FAX

From: Justin Dudley [<mailto:Justin.Dudley@Pulte.com>]
Sent: Wednesday, May 07, 2014 3:08 PM
To: Mark Crosley
Subject: RE: SJ-14 test dig follow up

No worries. Thanks for the follow up. I have a meeting with SJRWMD next week regarding using the already existing trail road that sits in the 200yards of property that sit between you and I. I will contact Mark Tamblyn should the district request a site visit of the trail road. Hopefully we could do so while St Johns County is digging to save Mark a trip and maybe get a better cross section view of the fill.

Thanks again


JUSTIN DUDLEY
 Land Project Manager
 North Florida Division
 124 Del Webb Parkway
 Ponte Vedra, Florida 32081
 office (904) 217-0005 x23
 cell (904) 778-6321
 fax (904) 217-0750
Justin.Dudley@Pulte.com

From: Mark Crosley [<mailto:mcrosley@aicw.org>]
Sent: Wednesday, May 07, 2014 11:34 AM
To: Justin Dudley
Subject: RE: SJ-14 test dig follow up

Justin:

I have not forgotten about your request. I have been out of the office and then swamped with an agenda to produce...

I am double checking our policy on the removal of material by private interests (as opposed to public entities) and will get back to shortly...

FYI... St. Johns County will be in the facility in the next week or so to remove approximately 2000 Cu/yds or less.... They have a short agreement and will be out of there by the end of June or mid-July. Hopefully, this does not adversely affect your schedule?

Thanks.

Sincerely,

Mark Crosley
 Executive Director

Florida Inland Navigation District
 1314 Marcinski Road
 Jupiter, FL 33477-9498

561-627-3386
 561-624-6480 FAX

From: Justin Dudley
Sent: Friday, April 18, 2014 4:52 PM
To: Mark Crosley
Subject: SJ-14 test dig follow up

Hello Mark,

I think yesterday yielded some areas of positive results regarding the test pits we dug. Some areas were a bit inconclusive to me, but that's why a geotech smarter than I was in attendance. Our geotech will probably have results for my surveyor in about a week and my surveyor will probably take two weeks to extrapolate what we think there is in terms of usable material on the site.

In the mean time, Is there a template agreement that we could be looking at as a baseline for a possible future agreement? I am certain there would be site specific inclusions regarding this site. But, in the mean time, if you have boiler plate items we need to be aware of, we could be reviewing those while the geotech and surveyor are calculating their results for us. We are wanting to calculate our cost for extracting this material from your site to determine its market value, and if you already have a ball park Scope of Work we need to consider, that would help. Or, if all things are negotiable, we can start with that assumption accordingly.

Hope you enjoy the weekend. I can follow up next week.


JUSTIN DUDLEY
Land Project Manager
North Florida Division
124 Del Webb Parkway
Ponte Vedra, Florida 32081
office (904) 217-0005 x23
cell (904) 778-6321
fax (904) 217-0750
Justin.Dudley@Pulte.com

CONFIDENTIALITY NOTICE: This email may contain confidential and privileged material for the sole use of the intended recipient(s). Any review, use, distribution or disclosure by others is strictly prohibited. If you have received this communication in error, please notify the sender immediately by email and delete the message and any file attachments from your computer. Thank you.

Mark Crosley

From: Justin Dudley <Justin.Dudley@Pulte.com>
Sent: Friday, March 21, 2014 5:21 PM
To: Mark Crosley
Cc: 'Mike Vallencourt II'
Subject: Inquiry on SJ-14
Attachments: DWPV Pod 3-SJ14.pdf

Hello Mark,

I am following up on a short conversation that you had with Stan at Vallencourt regarding the FIND site, SJ-14 in Nocatee. We are the development that is your neighbor to the south called Riverwood, Del Webb Ponte Vedra. I am currently in the process of design on our next phase of homes and would be seeking approximately 240,000 CY of fill material.

I understand these resources are often allocated to state projects first, or possibly subject to public bid, but I did not know if that was on scheduled intervals by FIND, or if an inquiry such as this would initiate the process? My timing on the project would be approximately 7-8 months from today until I begin import.

If there is any merit to this inquiry I would be interested in further exploring the volume and quality of material on your site. My engineers for all projects in Jacksonville are England Thims & Miller, and Ellis and Associates does all of our geotechnical exploration. I would be interested in engaging their services in the exploratory process.

Attached is a screen shot of the development in relation to your site. I am also available by phone if that's the best method of preliminary communication.

I hope this finds you well.


JUSTIN DUDLEY
 Land Project Manager
 North Florida Division
 124 Del Webb Parkway
 Ponte Vedra, Florida 32081
 office (904) 217-0005 x23
 cell (904) 778-6321
 fax (904) 217-0750
Justin.Dudley@Pulte.com

CONFIDENTIALITY NOTICE: This email may contain confidential and privileged material for the sole use of the intended recipient(s). Any review, use, distribution or disclosure by others is strictly prohibited. If you have received this communication in error, please notify the sender immediately by email and delete the message and any file attachments from your computer. Thank you.

Mark Crosley

From: Peter Breton <pbreton@blesmlaw.com>
Sent: Wednesday, May 07, 2014 4:35 PM
To: Mark Crosley
Subject: FW: IND language - OGC?

Mark, here is the old email about a spoil site rejuvenation plan.

Sincerely,
 Peter L. Breton
 Breton, Lynch, Eubanks & Suarez-Murias, P.A.
 1209 North Olive Avenue
 West Palm Beach, FL 33401
 561-721-4003
 561-721-4001 (Facsimile)

Tax Advice Disclosure: To ensure compliance with requirements imposed by the IRS under Circular 230, we inform you that any U.S. federal tax advice contained in this communication (including any attachments), unless otherwise specifically stated, was not intended or written to be used, and cannot be used, for the purpose of (1) avoiding penalties under the Internal Revenue Code or (2) promoting, marketing or recommending to another party any matters addressed herein.

The information contained in this electronic mail transmission may be attorney/client privileged and confidential. It is intended only for the use of the individual or entity named above. If the reader of this message is not the intended recipient, you are hereby notified that any dissemination, distribution or copy of this communication is strictly prohibited. If you have received this communication in error, please notify us immediately by telephone collect at 561-721-4000. Thank you.

-----Original Message-----

From: JON MOYLE, JR.
 Sent: Wednesday, March 28, 2007 1:04 PM
 To: Peg Griffin
 Cc: PETER BRETON
 Subject: FW: IND language - OGC?

Please put this e-mail chain in the FIND file, both electronically and hard copy. Thanks. Jon

Peter: You should keep a copy of this as well. Jon

-----Original Message-----

From: Vielhauer, Harold [mailto:Harold.Vielhauer@dep.state.fl.us]
 Sent: Wednesday, March 28, 2007 12:00 PM
 To: Stoutamire, Jim; JON MOYLE, JR.; Fitzwater, Jennifer; dramba@llw-law.com; slewis@llw-law.com; tlewis@llw-law.com
 Cc: Mansfield, Geoffrey; Ballard, Bob G. (Deputy Secretary); Rudd, Ryder; Cantrell, Richard
 Subject: RE: IND language - OGC?

Jim's "analysis" is correct. If the BOT (or staff through delegation) approves the rejuvenation plan the districts can sell the material and retain the proceeds.

Bud

-----Original Message-----

From: Stoutamire, Jim

Sent: Wednesday, March 28, 2007 11:25 AM

To: 'jmoylejr@moylelaw.com'; Fitzwater, Jennifer; 'dramba@llw-law.com'; 'slewis@llw-law.com'; 'tlewis@llw-law.com'

Cc: Mansfield, Geoffrey; Ballard, Bob G. (Deputy Secretary); Vielhauer, Harold; Rudd, Ryder; Cantrell, Richard

Subject: Re: IND language - OGC?

Importance: High

With respect to the (d) question - Jon's summary is correct so long as the BOT approves the plan. As I noted in another email I believe approval authority is delegaed to staff but for heightened public concern. I do not anticipate HPC nor should approval be difficult although to date no plan has ever been submitted for review as far as I know

Bub - plus verify if my "legal" analysis is correct

Sent from my BlackBerry Wireless Handheld

----- Original Message -----

From: JON MOYLE, JR. <jmoylejr@moylelaw.com>

To: Fitzwater, Jennifer; dramba@llw-law.com <dramba@llw-law.com>; slewis@llw-law.com <slewis@llw-law.com>;

tlewis@llw-law.com <tlewis@llw-law.com>

Cc: Stoutamire, Jim; Mansfield, Geoffrey; Ballard, Bob G. (Deputy Secretary); Vielhauer, Harold; Rudd, Ryder; Cantrell, Richard

Sent: Wed Mar 28 10:50:06 2007

Subject: RE: IND language

These comments generally look good; I would suggest making the slight revision requested by Terry Lewis to clarify that that mixing zone exemption applies to dredged spoil return water, and getting this Linda as a proposed strike everything amendment. I will take responsibility for doing that, if everyone is o.k., with this approach. (It will be a late filed amendment.)

It can be represented that the parties and DEP are working on this, have made progress, and will continue working to improve the bill. (That way, we are in tentative agreement, with the understanding that we can meet next week to refine, address other issues, etc.)

I wanted to briefly address the proposed amendment we discussed last week regarding the ability of the Districts to sell dredged spoil material to third parties, and retain any funds received from this transaction. I was told that such action was possible under existing statute 253.03(10)(d), and the new proposed language was not necessary, provided the District had submitted a spoil site rejuvenation plan to FDEP-Board of Trustees which indicated such material could be handled in this way as part of the plan. Once that plan was approved, the District would be able to contact for the removal of the spoil materials from existing spoil sites.

Since my client obviously viewed the matter differently, and thus was seeking the amendment, I would appreciate it if Jim or the other appropriate person could confirm that the understanding set forth above regarding the sale of dredged spoil materials is correct.

Thanks, and as time is short, Jennifer, please let me know is this sounds like a good plan. Regards, Jon

-----Original Message-----

From: Fitzwater, Jennifer [mailto:Jennifer.Fitzwater@dep.state.fl.us]

Sent: Tuesday, March 27, 2007 9:56 PM

To: dramba@llw-law.com; slewis@llw-law.com; tlewis@llw-law.com; JON MOYLE, JR.

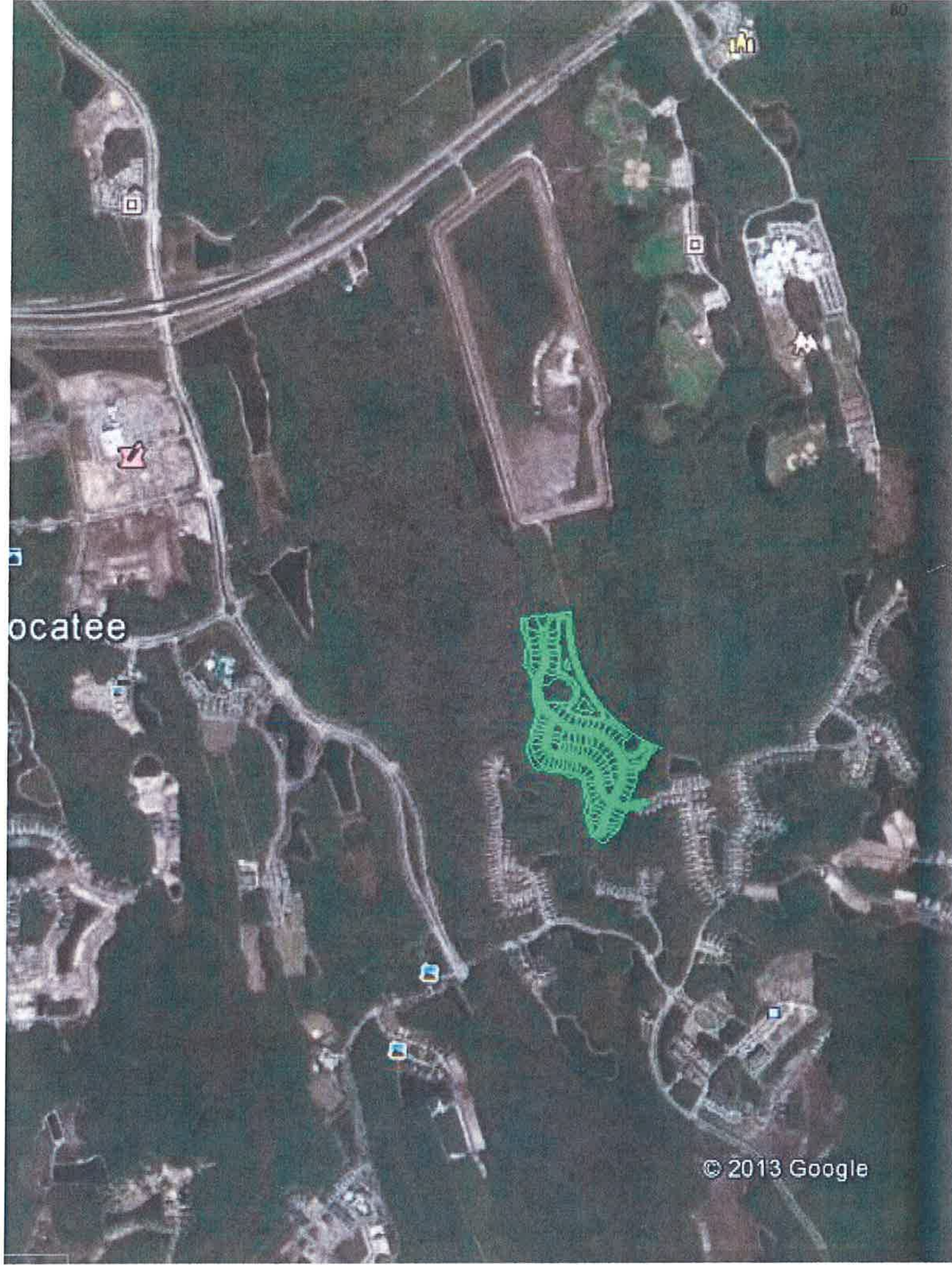
Cc: Stoutamire, Jim; Mansfield, Geoffrey; Ballard, Bob G. (Deputy Secretary); Vielhauer, Harold; Rudd, Ryder; Cantrell, Richard

Subject: IND language

All -- I've taken a stab at combining our comments on the proposed language offered by Steve and Jon (not in proper amendment format but you'll get the gist). Attached is what we can accept for purposes of the meeting on Thursday. If you are interested in having the more detailed conversation on the maintenance dredging exemption (language proposed by Steve was developed in 2003; not that we're necessarily opposed but we'd need some time to review again), we'd be happy to do so but don't think we'll be able to sign off before Thursday morning. Maybe we can meet and discuss in more detail next week when things will be a little quieter? In the meantime, let me know what you think about the attached proposal.

If you have questions, please let me know.

Jennifer



ocatee

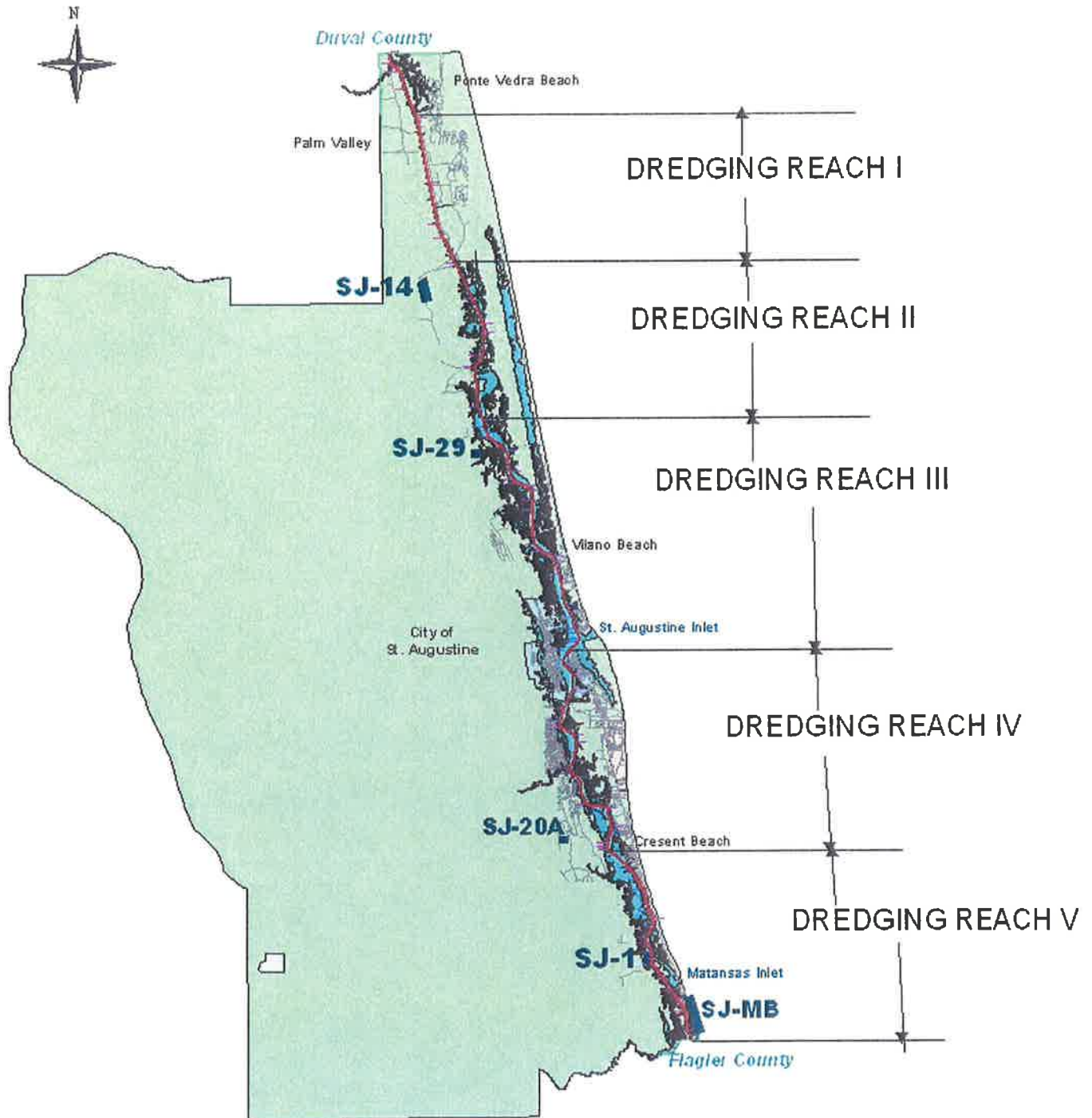


© 2013 Google

Google earth

1318 ft

INTRACOASTAL WATERWAY
DREDGING REACHES AND
DREDGED MATERIAL MANAGEMENT AREAS
IN ST. JOHNS COUNTY





-  FIND Easement
-  FIND Owned
-  ICW Right-of-Way
-  Channel

Dredged Material Management Area
SJ-14



ALCALDE & FAY
GOVERNMENT & PUBLIC AFFAIRS CONSULTANTS

July 1, 2014

MEMORANDUM

TO: Mark Crosley, Executive Director

FROM: Jim Davenport

SUBJECT: Federal Legislative Report

FISCAL YEAR 2015 FUNDING FOR THE INTRACOASTAL WATERWAY

On June 18th, the House Appropriations Committee marked up its fiscal year (FY) 2015 Energy and Water Development Appropriations Bill. The bill includes \$5.5 billion for the U.S. Army Corps of Engineers (USACE), an increase of \$25 million above the FY 2014 enacted level and \$959.5 million above the President's budget request.

The bill includes \$600,000 for the Intracoastal Waterway, which reflected the Administration's budget request. The bill also includes \$25.4 million for Navigation, \$45 million for Inland Waterways and \$42.5 million for Small, Remote or Subsistence Navigation. In addition to the \$600,000 included for the IWW, the IWW would be eligible to receive funding under the Navigation, Inland Waterways and Subsistence Navigation categories in the USACE FY 2015 Work Plan.

Last year's House bill did not include the Navigation, Inland Waterways and Subsistence Navigation categories, so it is encouraging that the FY 15 bill included them.

The House bill also includes new guidance pertaining to the development of the USACE Work Plan. The bill reads as follows:

Work Plan.—The fiscal year 2015 work plan shall be submitted in two phases. First, not later than 21 days after enactment of this Act, the Corps shall provide to the Committees on Appropriations of the House of Representatives and the Senate a detailed description of the ratings system(s) developed and used to evaluate studies and projects within each account, including the weighting given to each factor or criterion if multiple factors or criteria are used. This phase shall not include any results of project-specific evaluations, but only information on the methodology of the ratings system(s).

To ensure compliance with this directive in fiscal year 2015, the Corps shall not allocate additional funds to any study or project nor issue a work allowance for any study or project receiving funding under this Act until the Committees provide written acknowledgement of the Corps' compliance with this directive. To be clear, the Committee shall not attempt to reject, approve, or modify the ratings system(s) submitted, but rather simply shall indicate that the Corps has provided a sufficiently-detailed description to represent a transparent allocation process.

Second, not earlier than 21 days and not later than 60 days after the Committees provide written acknowledgement of receipt of phase one of the work plan, the Corps shall provide to the Committees on Appropriations of the House of Representatives and the Senate phase two of the work plan, including the following information:

- 1) Delineation of how these funds are to be allocated;*
- 2) A summary of the work to be accomplished with each allocation, including phase of work, as appropriate;*
- 3) The results of each project-specific evaluation under the rating system(s); and*
- 4) A list of all studies and projects that were considered eligible for funding but did not receive funding, including:*
 - a) an explanation of whether each study or project could have used funds in fiscal year 2015,*
 - b) whether the study or project was rated as highly or more highly than other studies or projects that did receive funding, and*
 - c) the specific reasons each study or project was considered as being less competitive for an allocation of funds.*

For any study or project excluded from funding for being "inconsistent with administration policy," the work plan shall include a detailed explanation of why such study or project is inconsistent with administration policy.

We do not see the guidance as an obstacle to our work to obtain funding for the IWW.

On the other side of the Capitol, the Senate Energy and Water Appropriations Subcommittee marked up its bill on June 17th. The bill was scheduled for consideration by the full Senate Appropriations Committee on June 19th, but markup was postponed after Appropriations Chair Barbara Mikulski (D-MD) learned that Republican amendments would be offered to the bill that could pose problematic for Senate Democrats on the Committee.

The bill has not been rescheduled for markup by the full Committee. Unfortunately, bills are not made available for review until after full committee markup, and thus we currently do not know what levels of funding are included in the Senate bill for Navigation and Inland Waterways.

WATER RESOURCES DEVELOPMENT ACT

Recently, the President signed into law the Water Resources Reform and Development Act of 2014 (WRRDA), which authorizes the USACE to carry out its mission to develop, maintain, and support the nation's vital port and waterways infrastructure needs, and support effective and targeted flood protection and environmental restoration needs.

As you know, the bill includes a section (Sec. 2008) titled "Assessment of Operation and Maintenance Needs of the Atlantic Intracoastal Waterway and the Gulf Intracoastal Waterway." The legislation is a positive step toward obtaining additional attention to and funding for the IWW because the USACE is required to examine the entire AIWW system from Virginia to Florida, determine the funding needs, and then report those needs to Congress. Likewise, "recreation purposes" will be assessed, which will certainly highlight the unique marine economy in Florida.

To assist the USACE with its study, which we hope will promote the funding needs of the AIWW and IWW, we submitted FIND's economic studies to Stacey Brown, Deputy Chief of Civil Works for the South Atlantic Division. We will continue working with Ms. Brown and other USACE staff on the study.

Please contact us with any questions.