



# PALM BEACH COUNTY

## INVENTORY SUMMARY

APRIL 18, 2018



**A1A BRIDGE  
- SAWFISH  
*BAY PARK***  

---

**SITE #1**





# A1A BRIDGE - SAWFISH *BAY PARK*

- 2.7' Water Depth
- Town of Jupiter Owned
- Site could be used for short docking periods and staging
- Limited parking on site
- Depth an issue - shoaling at mouth of location





**BURT  
REYNOLDS  
PARK EAST  
*BOAT RAMP*  
SITE #2**





# BURT REYNOLDS PARK EAST *BOAT RAMP*

- 7.8' Water Depth by ramps
- 6.3' Water Depth by docks
- 3.7'-10' Water Depth thru access channel
- Palm Beach County Owned
- US1 Bridge is 12.5' of clearance
- Lots of parking
- Good turnaround





**BURT  
REYNOLDS  
PARK WEST  
*BOAT RAMP*  
SITE #3**





# BURT REYNOLDS PARK WEST *BOAT RAMP*

- 5' Water Depth by Ramps
- Palm Beach County Owned
- Better option than east due to being right on ICW
- 24HR Park – parking permit needed
- Lot below location is owned by Town of Jupiter would be potentially changed to parking – potential commercial / industrial access here





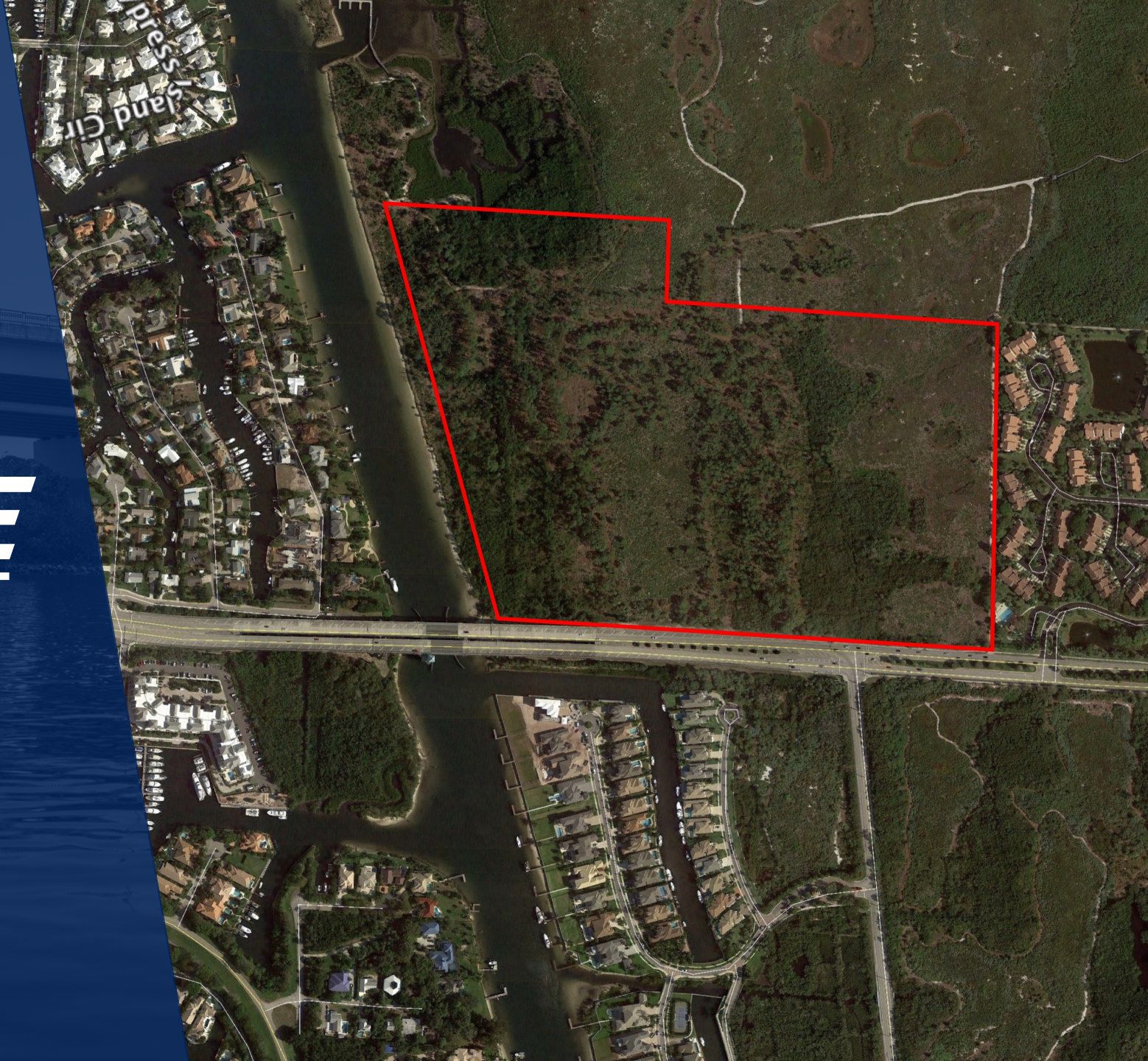
**DONALD  
ROSS ROAD  
*BRIDGE - NE*  
SITE #4**





# DONALD ROSS ROAD *BRIDGE - NE*

- 6.4' Water Depth SE Side
- 10' Water Depth NE Side
- TIITF Owned
- Neighbor push back possible
- Located in North Palm Beach





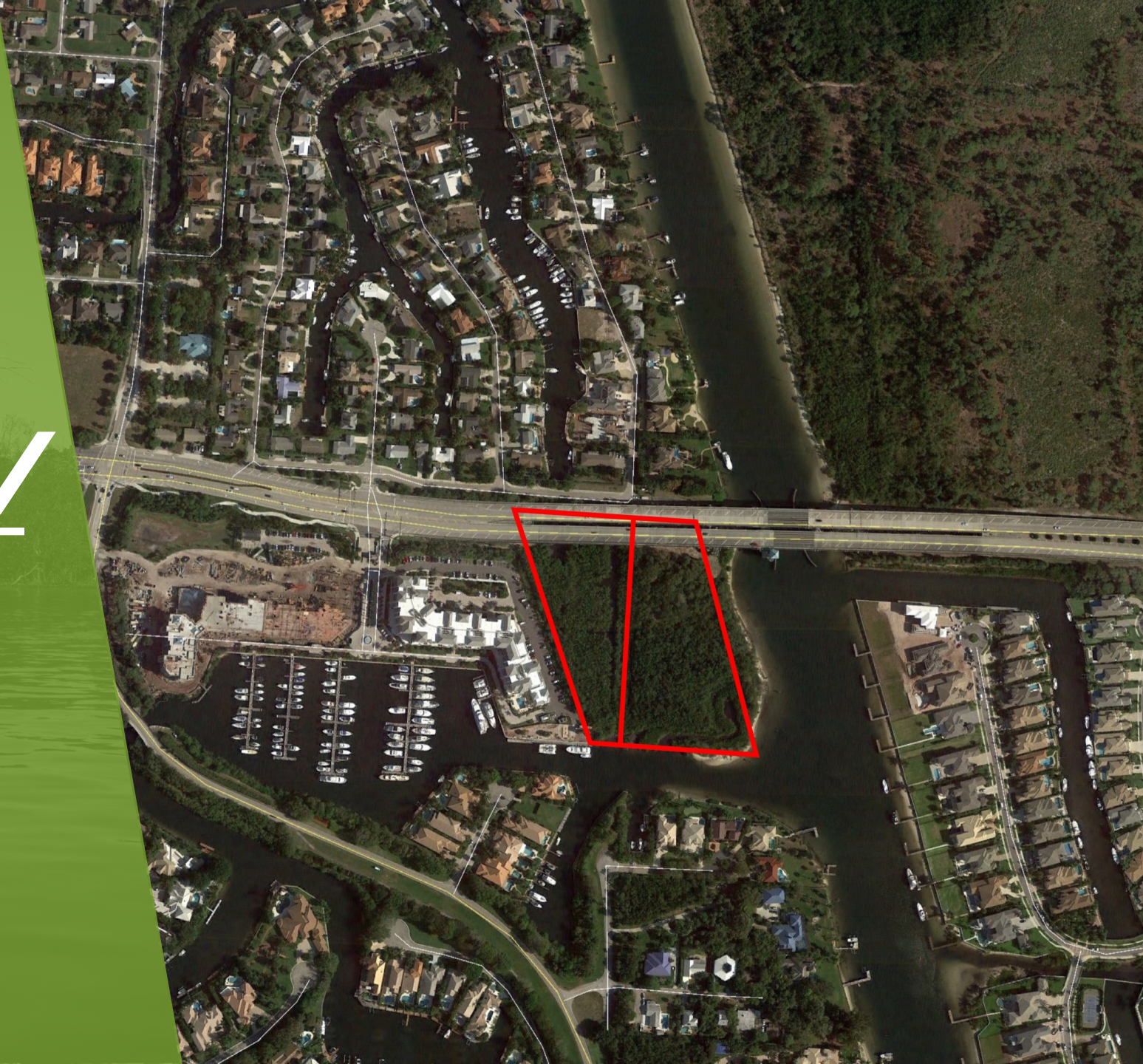
# DONALD ROSS ROAD *BRIDGE - SW* --- SITE #5





# DONALD ROSS ROAD *BRIDGE - SW*

- 11.1'-17.6' Water Depth in Channel
- Palm Beach County Owned
- Access exists under bridge on county parcel
- Azure Condos located to west of property are very tall
- Located in North Palm Beach





**BERT  
WINTERS  
PARK BOAT  
*RAMP*  
SITE #6**





# BERT WINTERS PARK BOAT *RAMP*

- 16'-17' Water Depth
- Palm Beach County Owned
- Good turn-around layout/small lot
- Access roads, new ramps and new parking currently being done (Closed for renovation until Oct 18)
- Push back from neighbors in regards to contractor use
- Located in North Palm Beach
- Parking permit needed





# **JUNO PARK** ***BOAT RAMP***

---

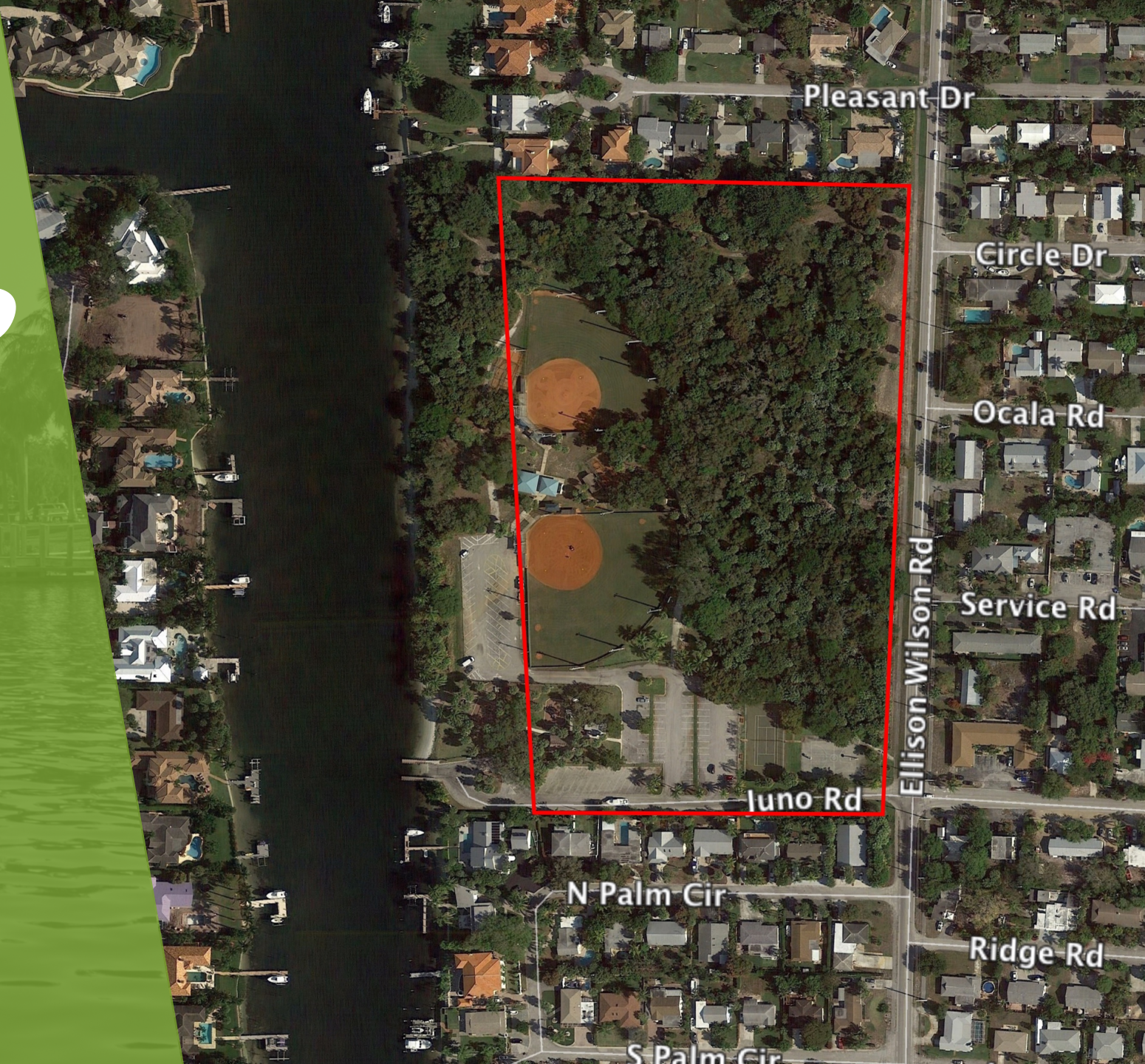
## **SITE #7**





# JUNO PARK *BOAT RAMP*

- 13'-14' Water Depth in Channel
- Palm Beach County Owned
- Army Corps owns 30' into the property from ICW
- Located in a highly residential area in North Palm Beach
- Tight turnaround and limited parking
- Steep ramp / deteriorated location
- Has been used as a layover location for contractors - neighbor push back
- Parking permit needed





# PHIL FOSTER *PARK* SITE #8





# PHIL FOSTER *PARK*

- 13' Water Depth by ramp
- Palm Beach County / TIITF Owned
- Great potential / Lots of parking
- North side seawall not allowed for use
- Old bridge exists on west side of park - can't be used due to instability
- Current construction by ramp (4/18/18)





# CURRIE PARK & *BOAT RAMP* SITE #9





# CURRIE PARK & *BOAT RAMP*

- 10.1' Water Depth at ramp
- Palm Beach County Lessor to West Palm Beach
- Seawall staging opportunity potential from new study
- Contractors like site (however rocks / mangroves prevent good access)
- Bulkheads are deteriorated
- CRA is redesigning the park from boat ramp - south side
- Parking is an issue on weekends





# LAKE AVENUE *BRIDGE* SITE #10





# LAKE AVENUE *BRIDGE*

- 5.8'-7' Water Depth
- FDOT Owned
- East side of ICW an Opportunity – NE side is best option
- Bulkhead has been redone
- New pier going in on North ICW side
- Viewing rights from condo could be an issue
- South side would need to be dredged and access road created for use - however bridge is too low for access underneath





**SPORTSMAN'S  
PARK BOAT  
*RAMP*  
SITE #11**





# SPORTSMAN'S PARK BOAT *RAMP*

- 8.6'-9.8' Water Depth
- Town of Lantana Owned
- Limited Parking - however parking recently expanded
- Town concerned with trucks blocking the road / Asphalt a concern with heavy truck use
- Good site for seawall loading - SE corner used by contractors / 45' of seawall ideal to use for contractors
- Contractors say one of the best sites around / Great access channel





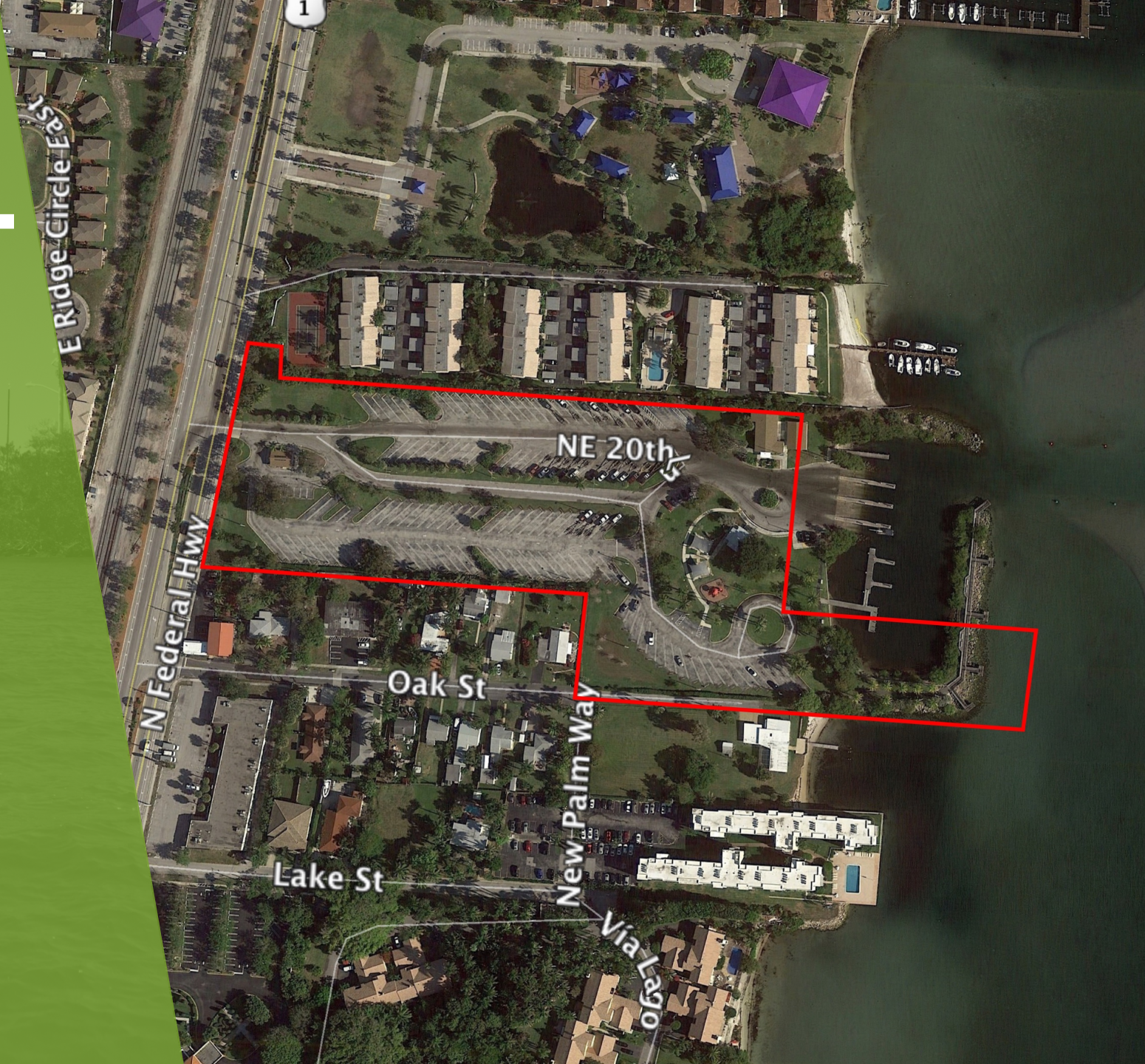
**BOYNTON  
BEACH BOAT  
CLUB PARK  
*BOAT RAMP*  
SITE #12**





# BOYNTON BEACH BOAT CLUB PARK *BOAT RAMP*

- 3.3' Water Depth before channel
- Boynton Beach Owned
- Sandbar issue here limiting recreational use – Access only available during high tide
- FIND has done dredging here often but sandbar fills in pretty quickly
- No seawall - launch only
- Contractors have used site for fireworks and channel marker projects





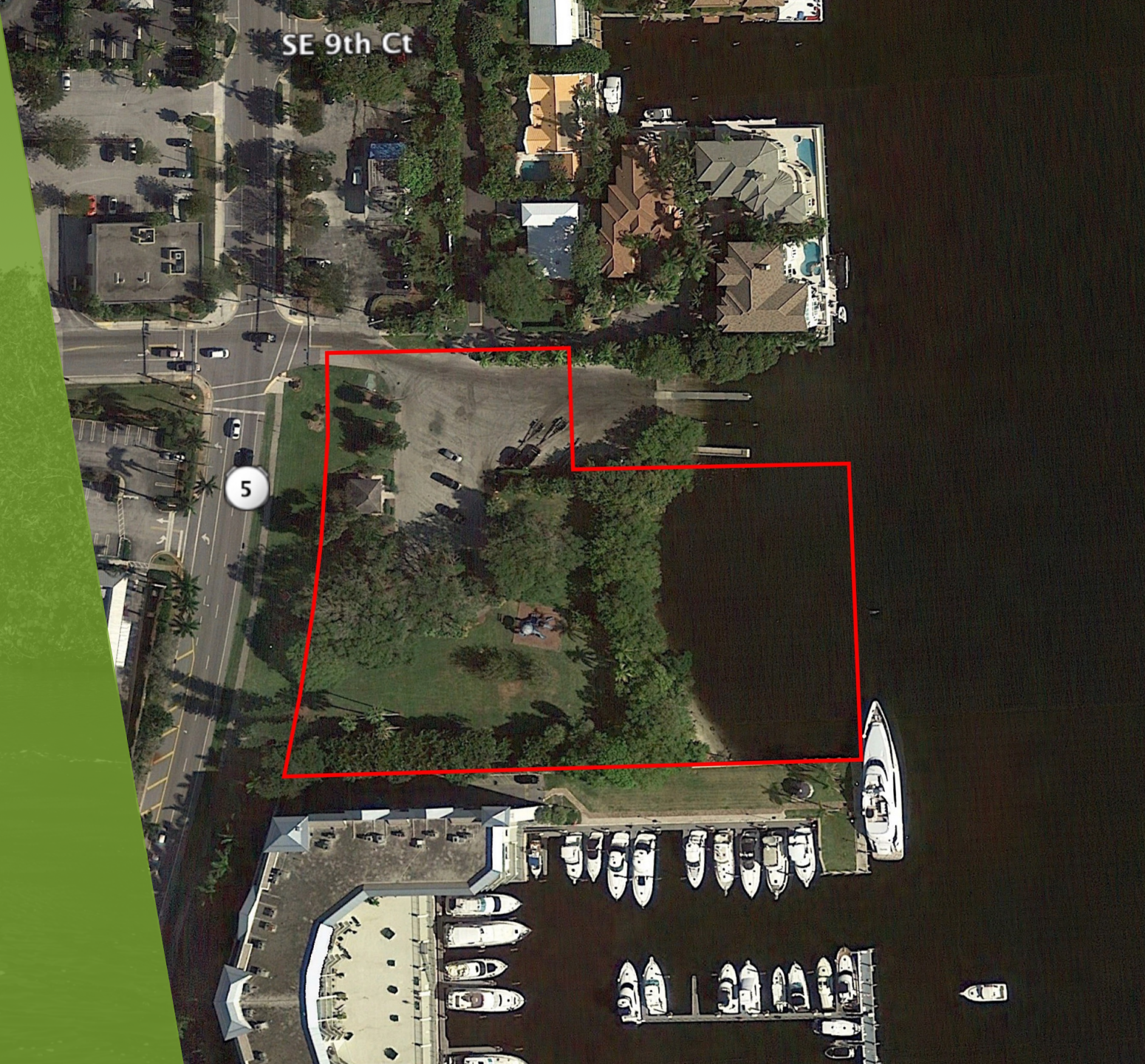
# KNOWLES PARK BOAT *RAMP* SITE #13





# KNOWLES PARK BOAT *RAMP*

- 5.9' Water Depth by Ramp
- City of Delray Beach Owned
- Residential homes right next to ramp
- Limited parking with tight turnaround
- Good access





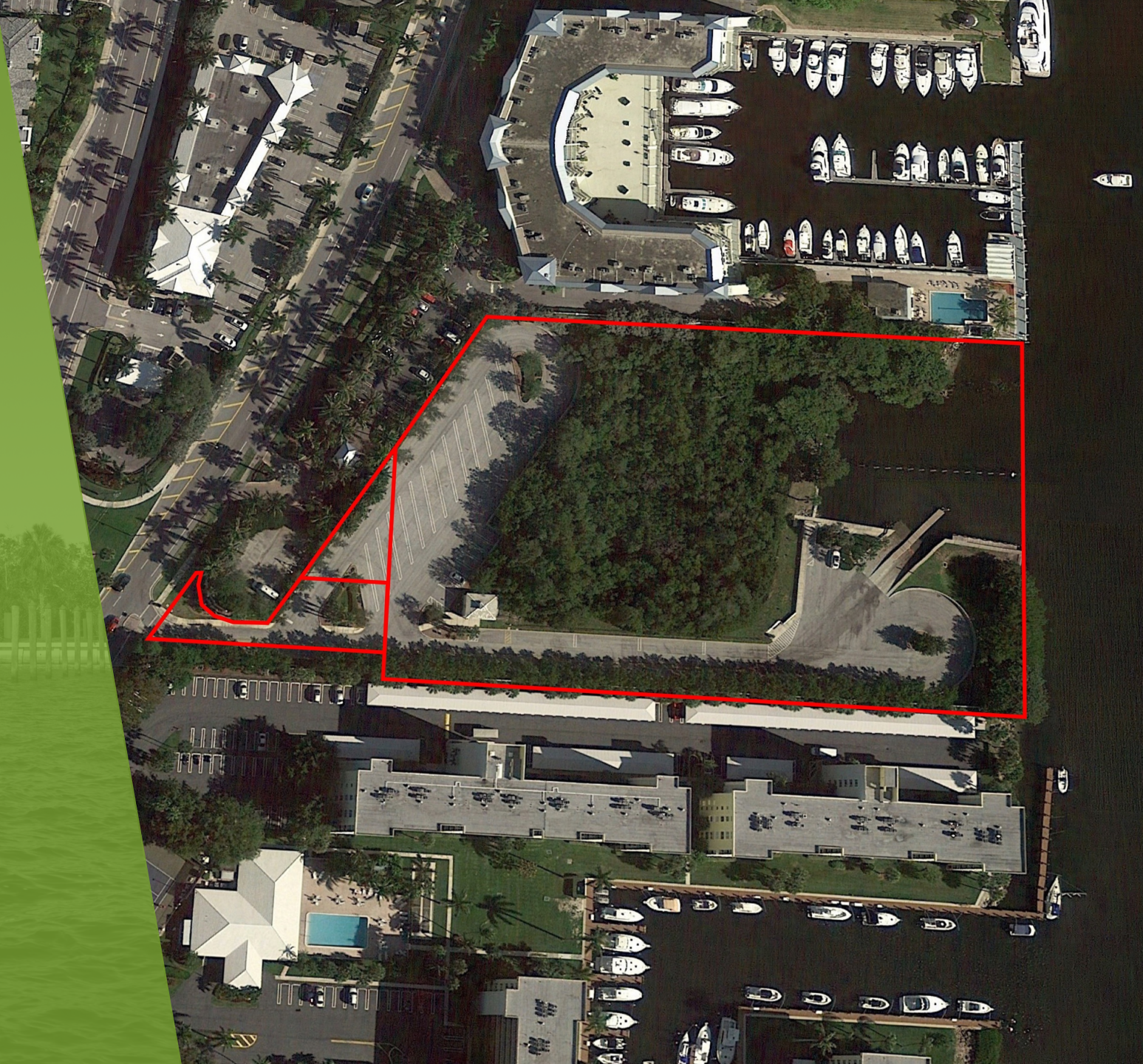
# DELRAY BEACH MANGROVE *PARK* SITE #14





# DELRAY BEACH MANGROVE *PARK*

- 5.5'-6.5' Water Depth
- FIND is Lessor
- Entrance road owned by Delray Beach
- Small but nice ramp
- Minimal parking
- East of ramp good spot for contractors but mangroves present
- Not much room between angled dock and seagrass area





**C-15**  
**CANAL**  
***SPILLWAY***  

---

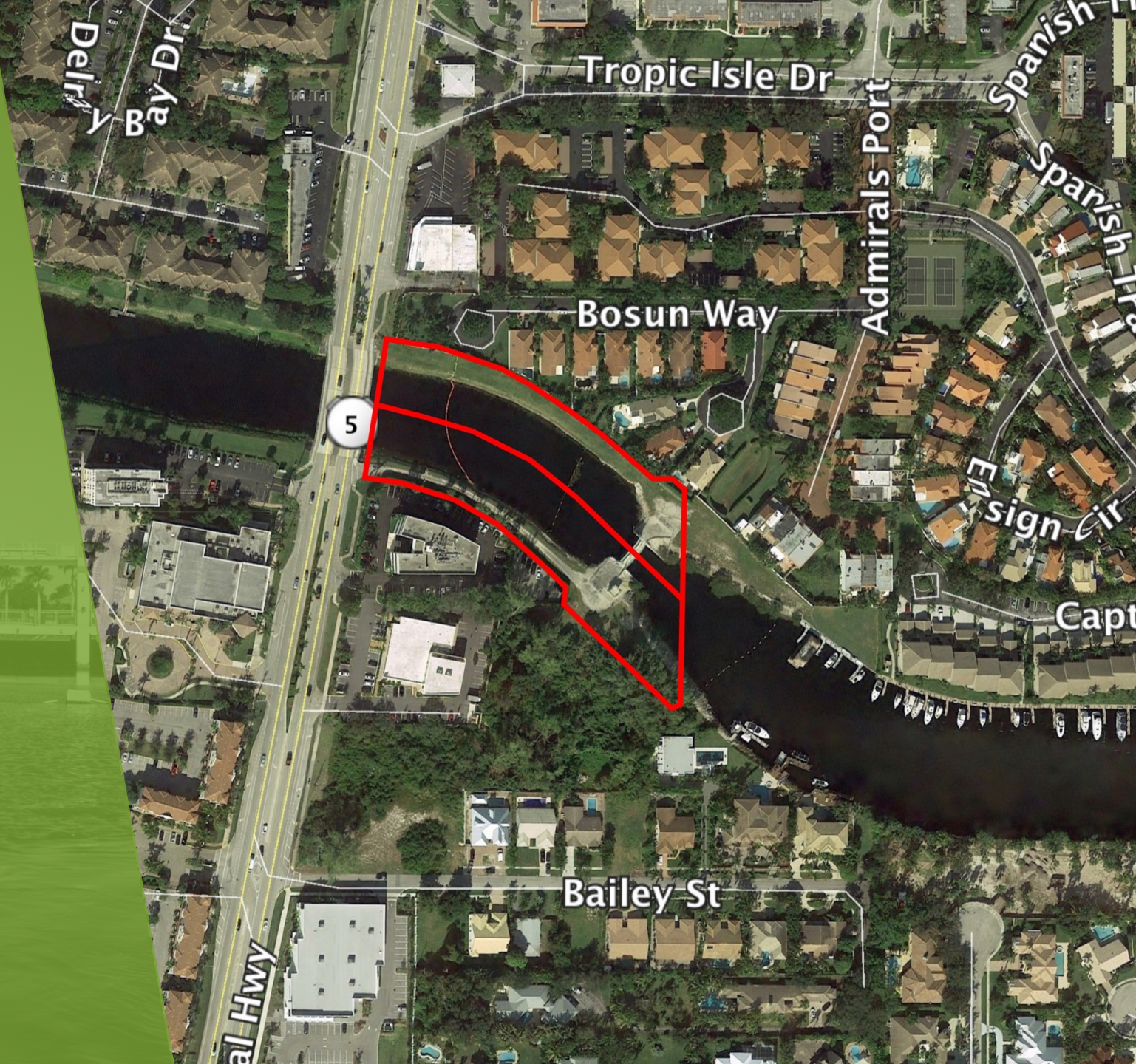
**SITE #15**





# C-15 CANAL *SPILLWAY*

- 6.3'-16' Water Depth
- SFWMD Owned
- Southside of property used in the past by a contractor who maintained permit to use the site
- Had to restore the site after use
- Deep area





# SR 800 *BRIDGE* SITE #16





# SR 800 *BRIDGE*

- 7'-12' Water Depth
- FDOT Owned
- Northwest side an opportunity
- Needs larger bulkhead
- Currently used by contractors

