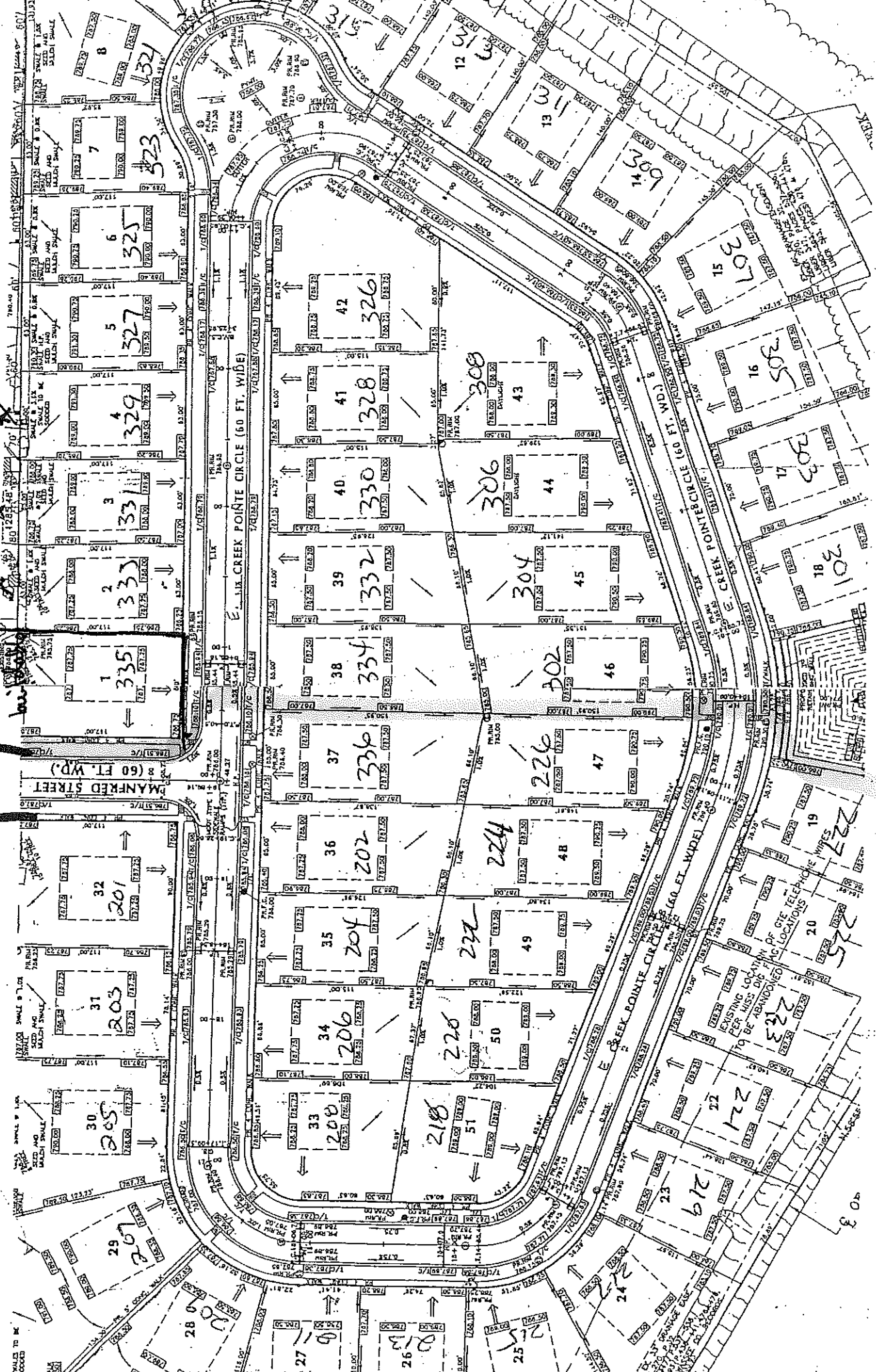


N ↑

City owned



City owned

MANRED STREET (60 FT. W.P.)

E. CREEK POINTE CIRCLE (60 FT. WIDE)

E. CREEK POINTE CIRCLE (60 FT. WIDE)

EXISTING LOCATION OF CITY TELEPHONE LOCATIONS TO BE ABANDONED

40 3