



ADDENDUM #1

DATE

March 11, 2022

ARCHITECT

Vigil & Associates Architectural Group, P.C

Albuquerque, New Mexico

PROJECT

Cibola County

Public Safety Building

Grants, New Mexico

OWNER

Cibola County

Grants, New Mexico

This addendum forms a part of the Contract Documents and modifies the original specifications and drawings dated February 18, 2022. Acknowledge receipt of this addendum in the space provided in the Bid Form. Failure to do so may subject the bidder to disqualification.



03/11/2022

Ray R. Vigil, AIA
Registered Architect in the State of New Mexico
License No. 004027
4477 Irving Blvd NW, Suite A
Albuquerque, New Mexico 87114
505-890-5030

A. QUESTIONS

1. **QUESTION:** Pass-thru lockers in Rm. 309. What are the locker configuration?
ANSWER: The one door is approximately 2' wide and 82" high with the 4" base. The rest of the doors are approximately 1' wide, 3-compartment lockers equally spaced. Refer to spec section 105113 Evidence Lockers for more information.
2. **QUESTION:** Where is bullet resistant fiberglass required? Note 4 on sheet A-402 and elevations C3 and C4 on sheet A-402 are confusing.
ANSWER: The bullet resistant fiberglass is located in the wall full height as noted on C3, C4/A-402. It goes underneath the gypsum fastened to the metal studs.
QUESTION: Please clarify the casework indicated at reception Rm. 302
ANSWER: We have a 30" high countertop at the window with a 3-drawer cabinet located to the left of the elevation. See attachments for elevation clarification.
3. **QUESTION:** Corian solid surface is shown on the colors and materials schedule, where is it required?
ANSWER: All casework countertops and transaction tops, further detail for incoming.
4. **QUESTION:** Where is FRP required, not shown on Room Finish Schedule?
ANSWER: FRP to be deleted in its entirety.
5. **QUESTION:** Type K window glazing is not bullet proof yet call out for bullet resistant speak through is?
ANSWER: That window shown on C3, C4/A-402 is also bullet proof as noted with key note #5. See attachments for bullet proof specifications.

B. SPECIFICATIONS

1. SECTION 00 0110 - TABLE OF CONTENTS:
 - a. **ADD** Section in its entirety:
2. **DELETE:** Delete Section 06 8213 Fiber Reinforced Plastic Coated Panels in it's entirety. "Section 00 0110 - Table of Contents" (attached)
3. SECTION 08 8000 – GLAZING:
 - a. Page 2, paragraph 2.01; **ADD** subparagraphs

"D. Glass Type 4: Fire-Rated Ceramic Glazing Assembly
(Refer to Section 08 4123- Fire Rated Glass and Framing Systems)"

"E. Glass Type 5: Bullet Resistant Insulated Unit
(Refer to Section 08 5653- Bullet Resistant Security Window Assembly)"

DRAWINGS

1. SHEET A-602:
 - a. Glazing Legend; **ADD**
"5. Bullet Resistant Insulated Unit"

C. DRAWINGS

1. **REPLACE:** the following sheets with attached:
G-003, A-4020, A-602,

D. ATTACHMENTS

- i. Revised sheets G-003, A-402, A-602

END OF ADDENDUM

SECTION 00 0110**TABLE OF CONTENTS**

Addendum 01

INTRODUCTION**Project Title Page****Certifications Page****Table of Contents****REQUEST FOR PROPOSAL****Division 00 – PROCUREMENT AND CONTRACTING REQUIREMENTS**

General Conditions

Sample Owner – Contractor Agreement

Wage Rates

TECHNICAL PROVISIONS**Division 01 – General Requirements**

01 1000	Summary
01 2000	Price and Payment
01 2100	Allowances
01 3100	Project Management and Coordination
01 3300	Submittal Procedures
01 3301	Submittal Transmittal Form
01 4000	Quality Requirements
01 5000	Temporary Facilities and Controls
01 5813	Temporary Project Sign
01 6300	Product Substitution Procedures
01 6301	Prior Approval Substitution Request Form
01 6302	Contractor Substitution Request Form
01 7000	Execution Requirements
01 7500	Starting and Adjusting
01 7700	Closeout Procedures
01 7800	Closeout Submittals
01 7801	Equipment Inventory and Roofing Data Collection
01 7900	Demonstration and Training

Division 02 – Existing Conditions

02 4100 Demolition

Division 03 – Concrete

03 3000 Cast-In-Place Concrete

Division 04 – Masonry

04 0120.52 Structural Glazed Tile and Grout Cleaning

04 2000 Concrete Masonry Units

Division 05 – Metals

05 1200 Structural Steel Framing

05 5000 Metal Fabrications

05 5213 Pipe & Tube Railings

05 7500 Prefinished Metal Louver System

Division 06 – Wood, Plastics, and Composites

06 1000 Rough Carpentry

06 4100 Architectural Wood Casework

~~06 8213 Fiber Reinforced Plastic-Coated Panels~~

Division 07 – Thermal and Moisture Protection

07 2100 Thermal Insulation

07 2400 Exterior Insulation and Finish System (EIFS)

07 2413 EIFS Repair & Re-Finish

07 2500 Weather Barriers

07 4646 Fiber Cement Siding

07 6200 Sheet Metal Flashing and Trim

07 6500 Flexible Flashing

07 8400 Firestopping

07 8413 Penetration Firestopping

07 9005 Joint Sealers

Division 08 – Openings

08 1113 Hollow Metal Doors and Frames

08 4113 Aluminum Framed Entrance & Storefront

08 4123 Fire Rated Glass and Framing Systems

08 5653 Bullet Resistant Security Window Assembly

08 7100 Door Hardware

08 8000 Glazing

Division 09 – Finishes

09 2116	Gypsum Board Assemblies
09 3000	Tiling
09 5100	Acoustical Ceilings
09 6500	Resilient Flooring and Accessories
09 6723	Resinous Flooring
09 6813	Carpet Tile
09 6823	Walk-Off Carpet Tile
09 8416	Acoustical Wall Panels
09 9113	Exterior Painting
09 9123	Interior Painting

Division 10 – Specialties

10 1100	Visual Display Units
10 1400	Signage
10 2116	Plastic Toilet Compartments
10 2613	Corner Guards
10 2800	Toilet, Shower and Utility Accessories
10 4400	Fire Protection Specialties
10 5113	Evidence Lockers
10 8500	Building Specialties

Division 11 – Equipment

11 1600	Bullet Resistant Fiberglass
---------	-----------------------------

Division 12 – Furnishings

12 2413	Roller Window Shades
---------	----------------------

Division 22 – Plumbing

22 0000	Plumbing Index
22 0500	General Plumbing Requirements
22 0523	Valves
22 0700	Piping Insulation
22 1000	Pipe and Pipe Fittings
22 1113	Domestic Water Systems
22 1123	Natural Gas Piping Systems
22 1313	Soil and Waste Piping Systems
22 4200	Plumbing Fixtures

Division 23 – Heating, Ventilating, and Air-Conditioning (HVAC)

23 0000	Heating, Ventilating, and Air Conditioning Index
23 0100	Demonstration and Training
23 0500	General Heating, Ventilating, and Air Conditioning Requirements
23 0513	Common Motor Requirements for HVAC Equipment
23 0548	Vibration Isolation and Expansion Compensation
23 0593	Balancing of Mechanical Systems
23 0713	Duct Insulation
23 3000	Air Distribution

Division 25 – Integrated Automation

25 0000	Integrated Automation Index
26 0500	General Integrated Automation Requirements
25 3000	Controls and Instrumentation
25 6000	Mechanical and Electrical Coordination Schedule

Division 26 – Electrical

26 0000	Electrical Index
26 0500	General Electrical Provisions
26 0519	Low Voltage Conductors
26 0526	Grounding
26 0533	Raceways, Boxes and Fittings
26 0536	Cable Tray
26 0553	Identifications for Electrical Systems
26 2200	Low Voltage Transformers
26 2416	Panelboards
26 2716	Cabinets
26 2726	Wiring Devices and Plates
26 5000	Lighting Equipment
26 5119	LED Interior Lighting
26 6000	Mechanical and Electrical Coordination Schedule

Division 28 – Electronic Safety and Security

28 0000	Electronic Safety and Security Index
28 3000	Fire Alarm System

Division 32 – Exterior Improvements

32 1123	Aggregate Base Courses
---------	------------------------

32 1216	Asphalt Paving
32 1313	Concrete Paving
32 1723	Pavement Markings and Signage
32 3113	Chain Link Fences and Gates

END OF TABLE OF CONTENTS

PROJECT NUMBER: 21-007

1 2 3 4 5

LEGEND

- ROOM NAME
- AREA - SQUARE FEET
- OCCUPANT LOAD FACTOR (IBC TBL 1004.1.1)
- OCCUPANT LOAD
- EXITING DIRECTIONAL ARROW WITH ROOM QUANTITY
- EXITING DIRECTIONAL ARROW WITH AREA QUANTITY
- EGRESS TRAVEL PATHWAY
- EGRESS MAX TRAVEL DISTANCE
- FIRE EXTINGUISHER IN SEMI RECESSED CABINET
- FIRE EXTINGUISHER WALL MOUNTED WITH BRACKET
- FIRE EXTINGUISHER IN FULLY RECESSED CABINET
- GROUP B OCCUPANCY
- GROUP S-1 OCCUPANCY
- 1 HR FIRE RATED WALL

** NOTE: ASSUMED EXISTING MASONRY FIRE RATED PARTITIONS

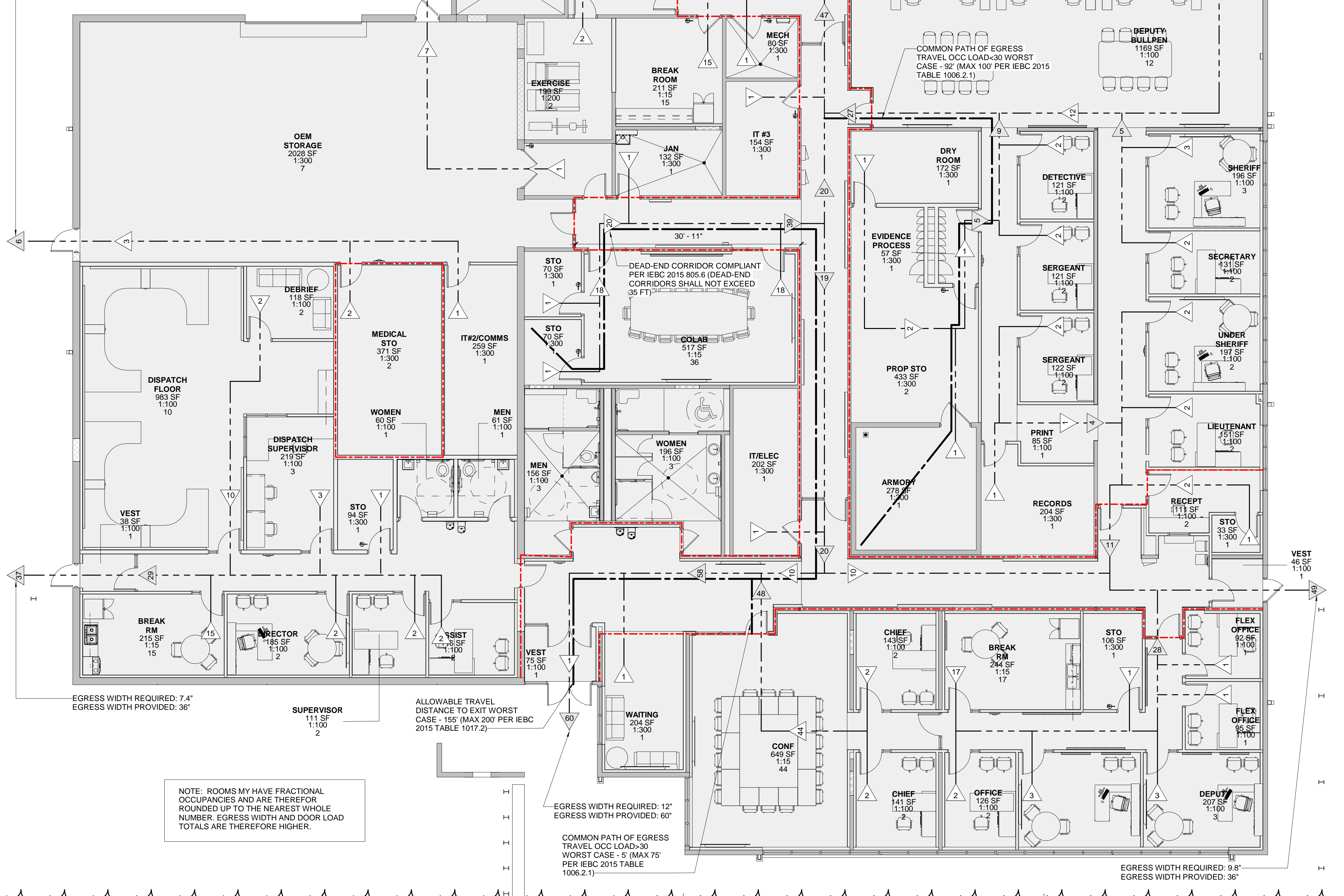
EGRESS WIDTH REQUIRED: 1.8"
EGRESS WIDTH PROVIDED: 36"

EGRESS WIDTH REQUIRED: 12.6"
EGRESS WIDTH PROVIDED: 48"

EGRESS WIDTH REQUIRED: 6"
EGRESS WIDTH PROVIDED: 36"

EGRESS WIDTH REQUIRED: 1.2"
EGRESS WIDTH PROVIDED: 36"

EGRESS WIDTH REQUIRED: 1.6"
EGRESS WIDTH PROVIDED: 36"



NOTE: ROOMS MAY HAVE FRACTIONAL OCCUPANCIES AND ARE THEREFOR ROUNDED UP TO THE NEAREST WHOLE NUMBER. EGRESS WIDTH AND DOOR LOAD TOTALS ARE THEREFORE HIGHER.

EGRESS WIDTH REQUIRED: 12"
EGRESS WIDTH PROVIDED: 60"

COMMON PATH OF EGRESS TRAVEL OCC LOAD-30 WORST CASE - 5' (MAX 75' PER IBC 2015 TABLE 1006.2.1)

EGRESS WIDTH REQUIRED: 9.8"
EGRESS WIDTH PROVIDED: 36"

ADDRESS:
2001 CLIF LEAR ROAD
GRANTS, NM 87020

LEGAL DESCRIPTION:
S 6 T. 10N R. 9W

ZONING:
EXISTING ZONE: GENERAL COMMERCIAL C-2
PROPOSED ZONING: GENERAL COMMERCIAL C-2

PROJECT DESCRIPTION:
LEVEL 3 ALTERATION OF FORMER NATIONAL GUARD ARMORY FOR USE AS PUBLIC SAFETY COMPLEX - NO CHANGE IN OCCUPANCY

APPLICABLE CODES:
2015 NEW MEXICO COMMERCIAL BUILDING CODE
2015 INTERNATIONAL BUILDING CODE (2015 IBC)
2015 INTERNATIONAL EXISTING BUILDING CODE (2015 IBC)
2009 NEW MEXICO ENERGY CONSERVATION CODE
2015 INTERNATIONAL FIRE CODE
2015 NM PLUMBING AND MECHANICAL CODE
2015 UNIFORM MECHANICAL CODE (UPMCO)
2015 UNIFORM PLUMBING CODE (UPMCO)
2012 NEW MEXICO ELECTRICAL SAFETY CODE
2017 NEW MEXICO ELECTRICAL CODE
ICC/ANSI A117.1-2009 ACCESSIBILITY STANDARDS

USE AND OCCUPANCY CLASSIFICATION:
MIXED OCCUPANCIES
Per IBC 302
• BUSINESS GROUP B
• MODERATE HAZARD STORAGE, GROUP S-1

CONSTRUCTION TYPE: TYPE IIB, EXISTING
Per IBC Table 601

SEISMIC DESIGN CATEGORY: D
See Structural Notes

BUILDING AREA:
ALLOWABLE:
GROUP S1, IIB, NON-SPRINKLED = 30,625 SF (MOST RESTRICTIVE)
Frontage increase per IBC 506.3: [17,500 SF + (17,500 SF X .75)]
GROUP B, IIB, NON-SPRINKLED = 40,250 SF
Frontage increase per IBC 506.3: [23,000 SF + (23,000 SF X .75)]
EXISTING BUILDING AREA: 20,762 SF < 30,625 SF ALLOWED

FIRE RESISTANCE RATING REQUIREMENTS FOR BUILDING ELEMENTS:
TYPE IIB = 0 HRS (ALL ELEMENTS)
Per IBC Table 601

OCCUPANT LOAD:
Per IBC Table 1004.1.2

GROUP B (ACCESSORY STORAGE) =	21	OCCUPANTS
GROUP B (ASSEMBLY UNCONCENTRATED) =	120	OCCUPANTS
GROUP B (BUSINESS) =	99	OCCUPANTS
GROUP B (KITCHENS COMMERCIAL) =	2	OCCUPANTS
GROUP B (TOTAL) =	242	OCCUPANTS
GROUP S-1 (ACCESSORY STORAGE) =	8	OCCUPANTS
TOTAL OCCUPANT LOAD (B242 + S8) =	250	OCCUPANTS

ALLOWABLE BUILDING HEIGHT: GROUP B, S1, TYPE IIB, NON-SPRINKLED: 55 FT
Per IBC Table 504.3

ACTUAL BUILDING HEIGHT: 1 STORY, 19 FT 4 IN (EXISTING) < 55 FT ALLOWED

FIRE PROTECTION SYSTEM:
THE EXISTING BUILDING WILL REMAIN NON-SPRINKLERED

MANUAL FIRE ALARM SYSTEM (IBC 907.2.3):	PROVIDED
PORTABLE FIRE EXTINGUISHERS (IBC & IFC 906):	2 REQUIRED - 13 PROVIDED
75 FT MAXIMUM TRAVEL TO FIRE EXTINGUISHER	PROVIDED
AUTOMATIC FIRE DETECT SYS (IBC 907.2 & IFC 906):	PROVIDED

BUILDING SEPARATION REQUIREMENTS:
Per IBC TABLE 508.4 B - S1 = NO SEPARATION REQUIREMENT

EGRESS WIDTH:
Per IBC 1005
Overall (TOTAL OCCUPANT LOAD 250)
Egress Components-required: 250 x 0.2 in/occ = 50 IN
Egress Components-provided: 336 IN (28'-0")

COMMON PATH OF EGRESS TRAVEL QL<30:
Per IBC table 1006.2.1
Allowable maximum (B most restrictive): 100 FT
Worst-case: 92 FT

COMMON PATH OF EGRESS TRAVEL QL>30:
Per IBC table 1006.2.1
Allowable maximum (B most restrictive): 75 FT
Worst-case: 5 FT

PANIC HARDWARE:
per IBC 1010.1.10
Doors serving rooms or spaces with an occupant load of 50 or more will be provided with panic hardware

ALLOWABLE TRAVEL DISTANCE TO EXIT:
Per IBC table 1017.2
Allowable maximum (B most restrictive): 200 FT
Worst-case: 155 FT

DEAD END CORRIDORS:
Per IBC 805.6
Max allowable length of dead end corridor = 35 FT
Actual max length of dead end corridor = 32 FT 5 IN

PLUMBING FIXTURE COUNT:
Per IBC Table 2902.1

Required	Provided			
	Male	Female	Male	Female
Water Closets				
GROUP B (242 Occupants)	3.42	3.42		
GROUP S-1 (8 Occupants)	0.04	0.04		
Total Water Closets Req'd	3.46	3.46	4	4 (8 Total)
Lavatories				
GROUP B (242 Occupants)	2.50	2.50		
GROUP S-1 (8 Occupants)	0.04	0.04		
Total Lavatories Req'd	2.54	2.54	3	3 (6 Total)
Showers				
GROUP B (242 Occupants)	NA	NA		
GROUP S-1 (8 Occupants)	NA	NA		
Total Showers req'd			2	1 (3 Total Existing)
Drinking Fountains:				
GROUP B (242 Occupants)	2.42			
GROUP S-1 (8 Occupants)	0.008			
Total Drinking Fountains req'd	2.43		2 provided - high/low configuration*	

Per IPC 410.3: Where drinking fountains are required, not fewer than two drinking fountains shall be provided, or (Exception 1) one in a high and low configuration.

Service Sink: 1 required 1 provided

PARKING REQUIREMENTS
Table 5.4.2. Parking Requirements on Attachment A (Ordinance 12-1197)
Parking Study Required - Code Compliance Officer established existing parking will be sufficient.

PUBLIC SAFETY BUILDING INTERIOR IMPROVEMENTS
CIBOLA COUNTY

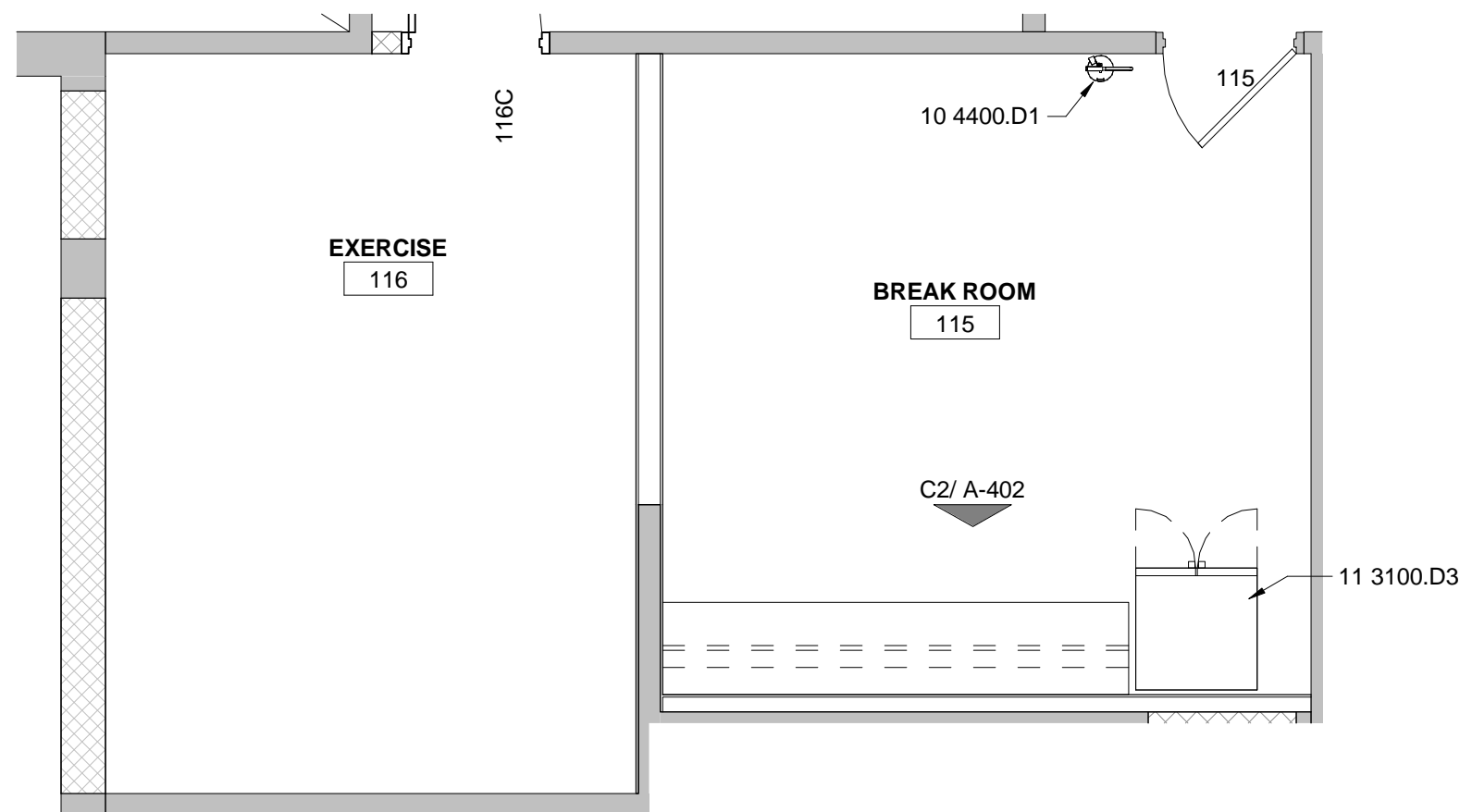


DATE: FEB 18, 2022
DRAWN BY: VA
CHECKED BY: RRV
REVISION SCHEDULE
1 3/11/22 ADD 01

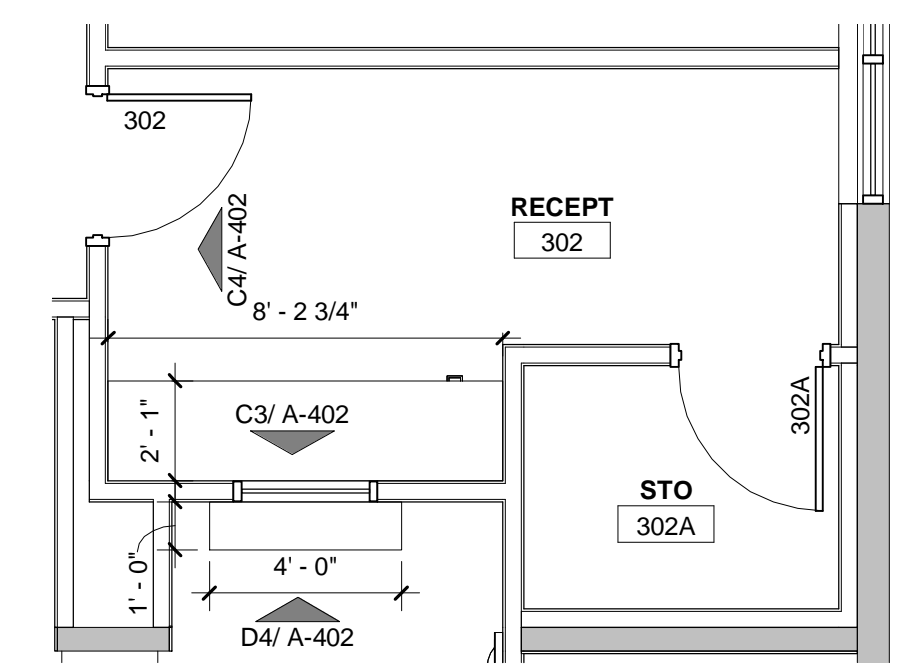
G-003

PROJECT NUMBER: 21-007 CODE SUMMARY

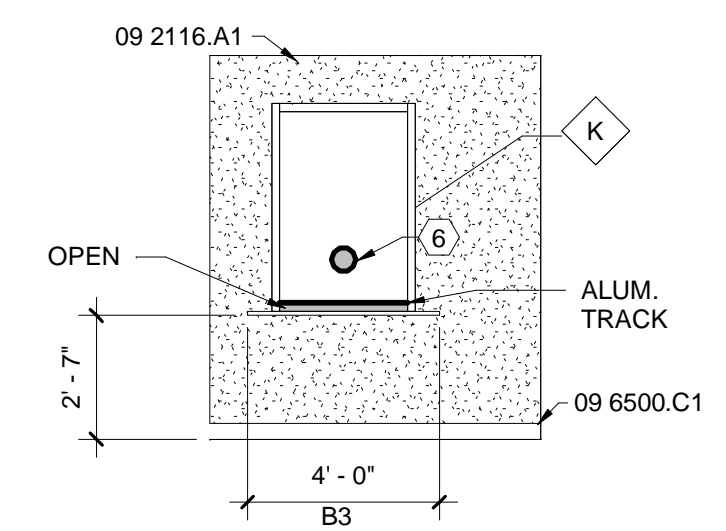
PROJECT NUMBER: 21-007



D1 ENLARGED PLAN - ALTERNATE 3
SCALE: 1/4" = 1'-0"



D3 ENLARGED PLAN
SCALE: 1/4" = 1'-0"



D4 INTERIOR ELEVATION
SCALE: 1/4" = 1'-0" RECEIPT - 302

- GENERAL SHEET NOTES**
- A. UNLESS NOTED OTHERWISE, DIMENSIONS ARE TO FACE OF STUD.
 - B. REFER TO PLUMBING SHEETS FOR FIXTURE TYPES.
 - C. REFER TO ROOM FINISH SCHEDULE SHEET I-102 FOR INTERIOR FINISHES.
 - D. SEE SHEET G-002 FOR ADA MOUNTING HGTS FOR FIXTURES AND ACCESSORIES.
 - E. REFER TO SHEETS A-403 FOR CASEWORK DETAILS.
 - F. REFER TO ENLARGED PLANS AND INTERIOR ELEVATIONS FOR BACKSPLASH LOCATIONS, HEIGHT OF COUNTERS, AND DEPTH.
 - G. REFER TO INTERIOR ELEVATION FOR BACKSPLASH LOCATIONS.
 - H. PROVIDE AND INSTALL COAT HOOK WITH BUMPER AT ALL BACK OF TOILET PARTITIONS, SEE SPECIFICATIONS SECTION 10 2800.
 - J. REFER TO REFLECTED CEILING PLANS FOR CEILING HEIGHTS.
 - K. INSULATE ALL EXPOSED SUPPLY AND DRAIN PIPING UNDER SINKS.
 - L. INSTALL BACKING IN WALL FOR ALL WALL MOUNTED EQUIPMENT ACCESSORIES, AND GRAB BARS.

REFERENCE KEYNOTES

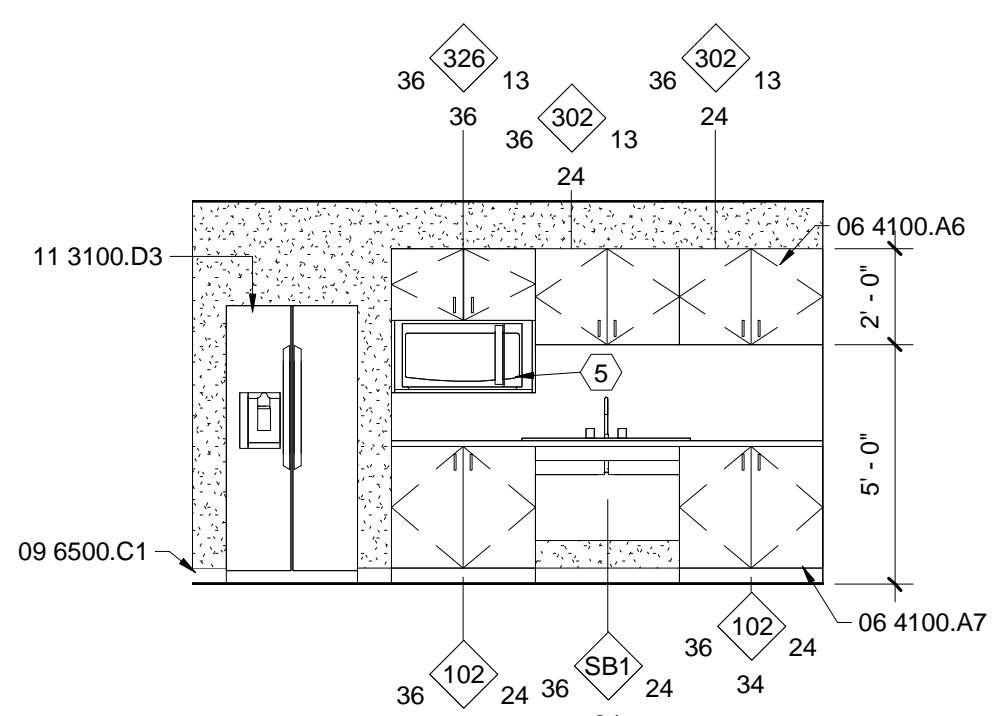
04 2000.A12	CONCRETE UNIT MASONRY TO BE PAINTED
06 4100.A6	PLASTIC LAMINATE UPPER CABINET
06 4100.A7	PLASTIC LAMINATE BASE CABINET
09 2116.A1	GYPSUM WALLBOARD
09 6500.C1	4" RUBBER BASE
09 9000.A1	PAINT FINISH
10 2113.B1	PLASTIC TOILET COMPARTMENTS
10 2113.B2	PLASTIC TOILET PARTITION
10 2800.A8	MOP AND BROOM HOLDER
10 4400.D1	WALL MOUNTED FIRE EXTINGUISHER BRACKET & FIRE EXTINGUISHER
11 3100.A1	RANGE
11 3100.D3	REFRIGERATOR/FREEZER
22 0000.D2	LAVATORY - MOUNT AT ADULT ACCESSIBLE HEIGHT
22 0000.D4	MOP SINK

TOILET ACCESSORY SCHEDULE

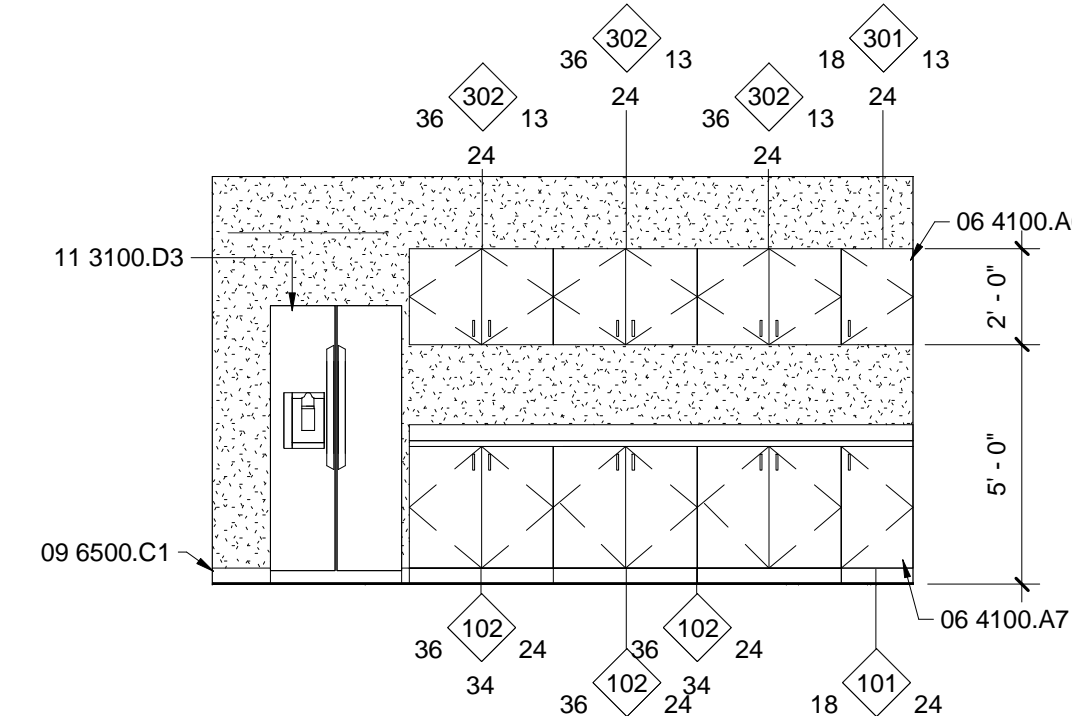
01	42" GRAB BAR	PROVIDED AND INSTALLED BY CONTRACTOR.SEE G-002 FOR MOUNTING HEIGHT
02	36" GRAB BAR	PROVIDED AND INSTALLED BY CONTRACTOR.SEE G-002 FOR MOUNTING HEIGHT
03	18" GRAB BAR	PROVIDED AND INSTALLED BY CONTRACTOR.SEE G-002 FOR MOUNTING HEIGHT
04	TOILET PAPER DISPENSER	PROVIDED AND INSTALLED BY CONTRACTOR.SEE G-002 FOR MOUNTING HEIGHT
07	SOAP DISPENSER	
08	MIRROR	PROVIDED AND INSTALLED BY CONTRACTOR.SEE G-002 FOR MOUNTING HEIGHT
09	SANITARY NAPKIN DISPOSAL	PROVIDED AND INSTALLED BY CONTRACTOR.SEE G-002 FOR MOUNTING HEIGHT
10	ADA FOLDING SHOWER SEAT	PROVIDED AND INSTALLED BY CONTRACTOR.SEE G-002 FOR MOUNTING HEIGHT
11	GRAB BAR AT SHOWER	PROVIDED AND INSTALLED BY CONTRACTOR.SEE G-002 FOR MOUNTING HEIGHT
13	BENCH	PROVIDED AND INSTALLED BY CONTRACTOR.SEE G-002 FOR MOUNTING HEIGHT
14	METAL CORNER SHELF	PROVIDED AND INSTALLED BY CONTRACTOR.SEE G-002 FOR MOUNTING HEIGHT
15	BABY CHANGING STATION	PROVIDED AND INSTALLED BY CONTRACTOR.SEE G-002 FOR MOUNTING HEIGHT
16	SHOWER CURTAIN ROD (COORD. HGT. W/ OWNER)	PROVIDED AND INSTALLED BY CONTRACTOR.SEE G-002 FOR MOUNTING HEIGHT
17	PAPER TOWEL DISPENSER	PROVIDED AND INSTALLED BY CONTRACTOR.SEE G-002 FOR MOUNTING HEIGHT

SHEET KEYNOTES - A-402

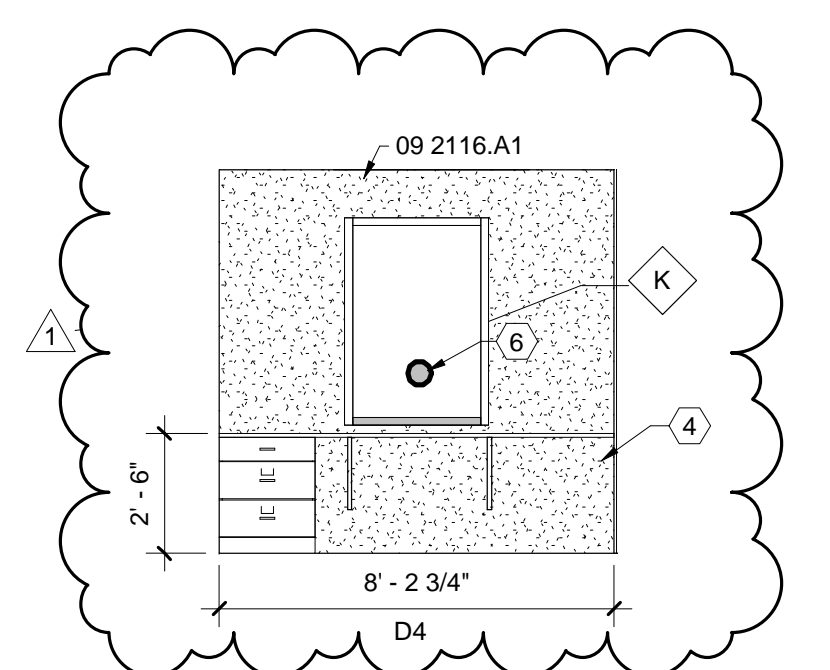
1	PORCELAIN WALL TILE PATTERN (P-1, P-2, P-3). SEE COLOR AND MATERIAL SCHEDULE FOR MORE INFORMATION.
2	BULKHEAD
3	NEW DUAL-LEVEL ADA DRINKING FOUNTAIN- SEE PLUMBING
4	SOLID HATCH DENOTES NEW METAL STUD PARTITION, GYP. TEXTURED AND PAINTED TO MATCH ADJACENT FINISH. ENTIRE WALL TO BE LINED WITH LEVEL 3, 7/16" THICK FIBERGLASS PANEL PER MANUFACTURERS RECOMMENDATIONS.
5	MICROWAVE TO BE OWNER PROVIDED
6	PROVIDE BULLET RESISTANT LEVEL - 3 SPEAK THRU MODEL NUMBER "CLD103" BY C.R. LAURENCE OR EQUAL. SPEAK THRU ON CLEAR SIDE.
7	AWT-1 ACCENT WALL TILE - INSTALL PER DETAIL A21-102.
8	EXISTING WALL TILE TO REMAIN THIS ROOM.



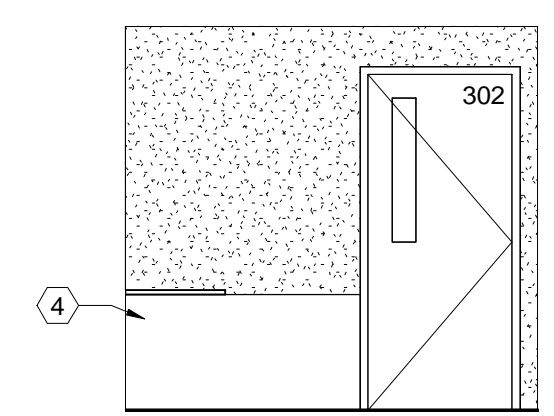
C1 INTERIOR ELEVATION
SCALE: 1/4" = 1'-0" BREAK ROOM - 205



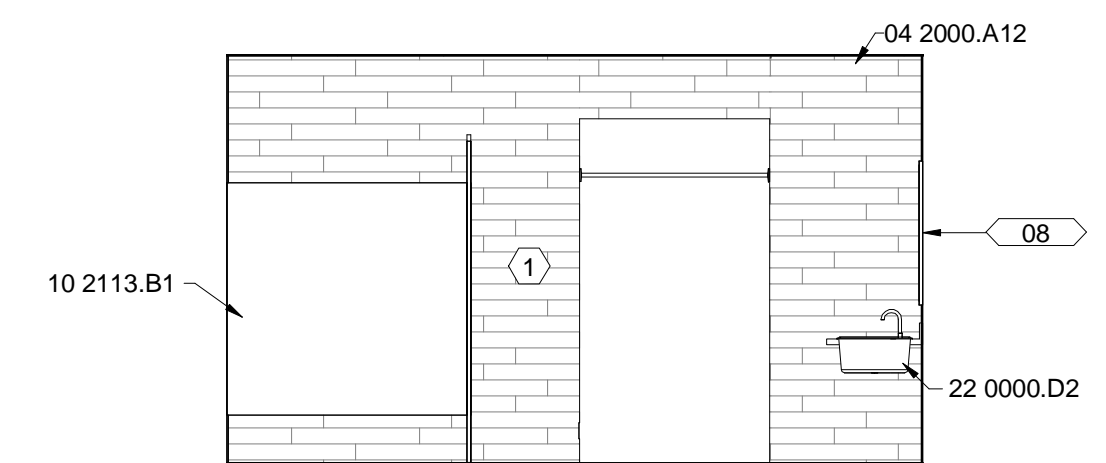
C2 INTERIOR ELEVATION
SCALE: 1/4" = 1'-0" BREAK ROOM - 115



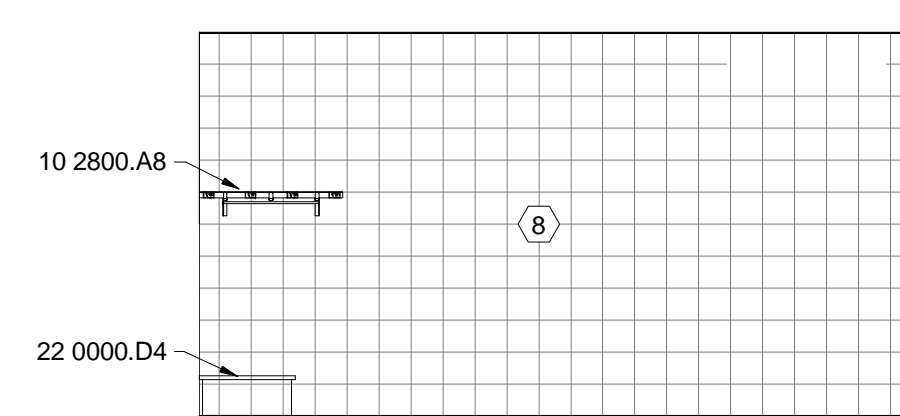
C3 INTERIOR ELEVATION
SCALE: 1/4" = 1'-0" RECEIPT - 302



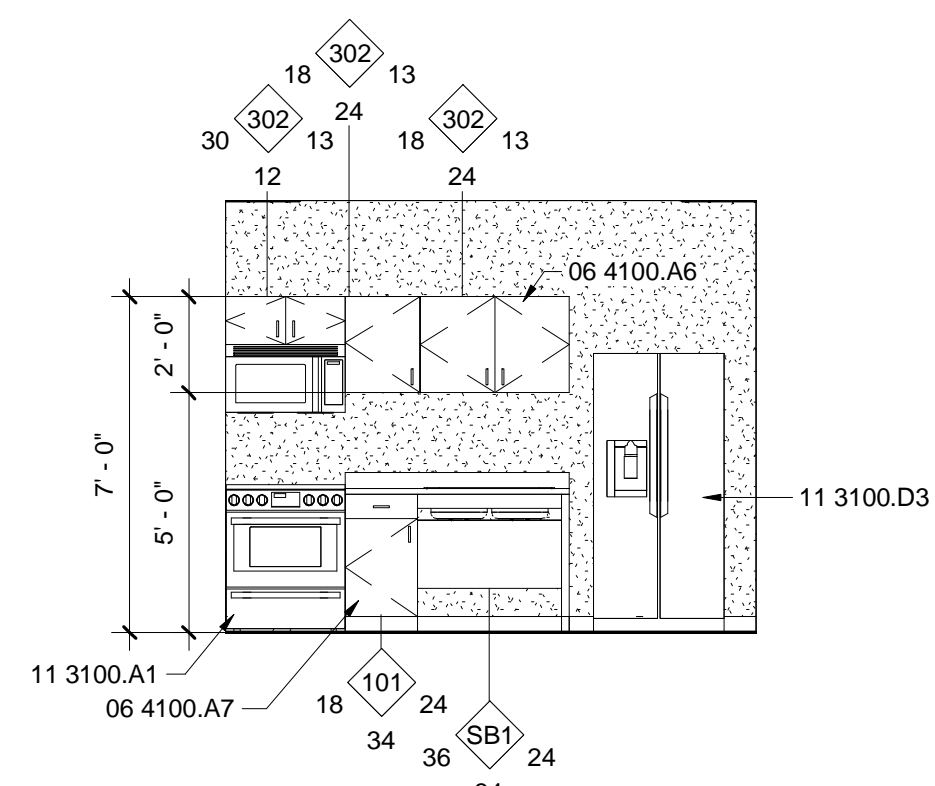
C4 INTERIOR ELEVATION
SCALE: 1/4" = 1'-0" RECEIPT - 302



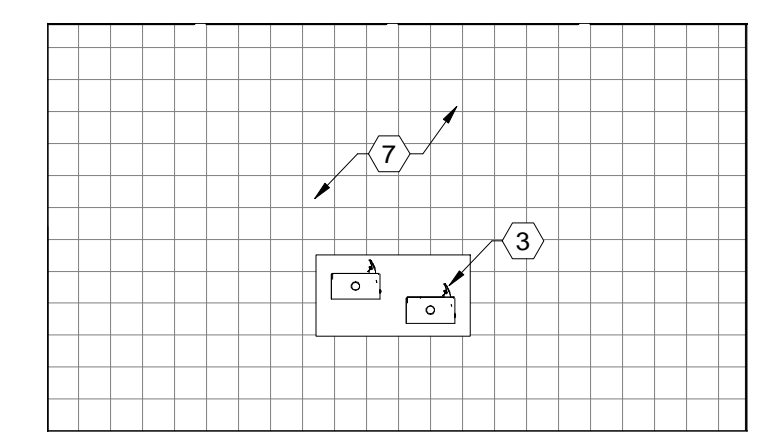
B1 INTERIOR ELEVATION
SCALE: 1/4" = 1'-0"



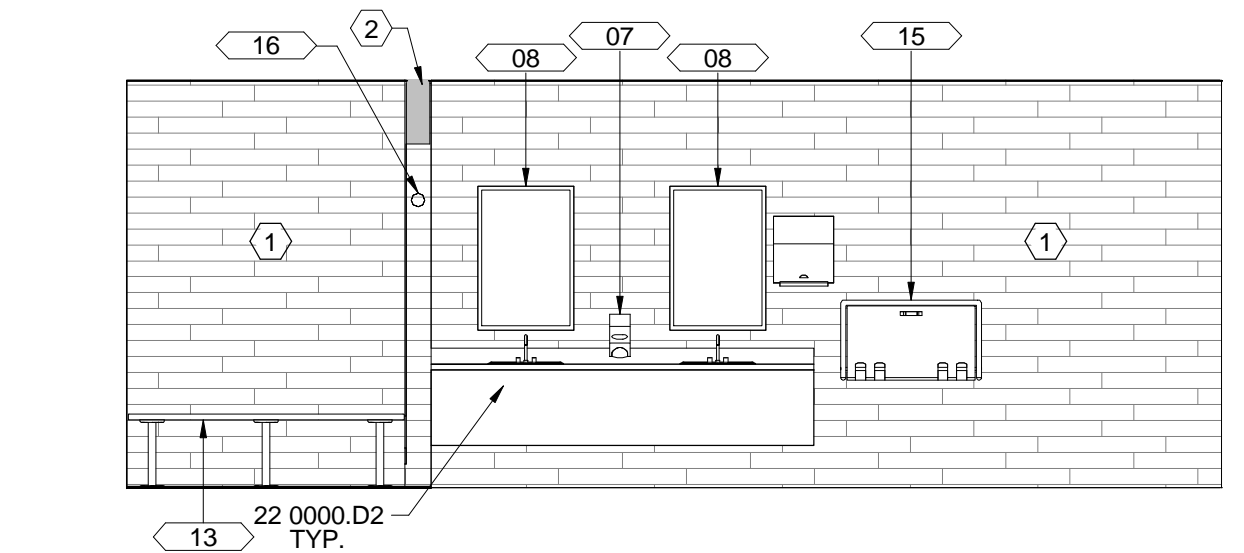
B2 INTERIOR ELEVATION
SCALE: 1/4" = 1'-0"



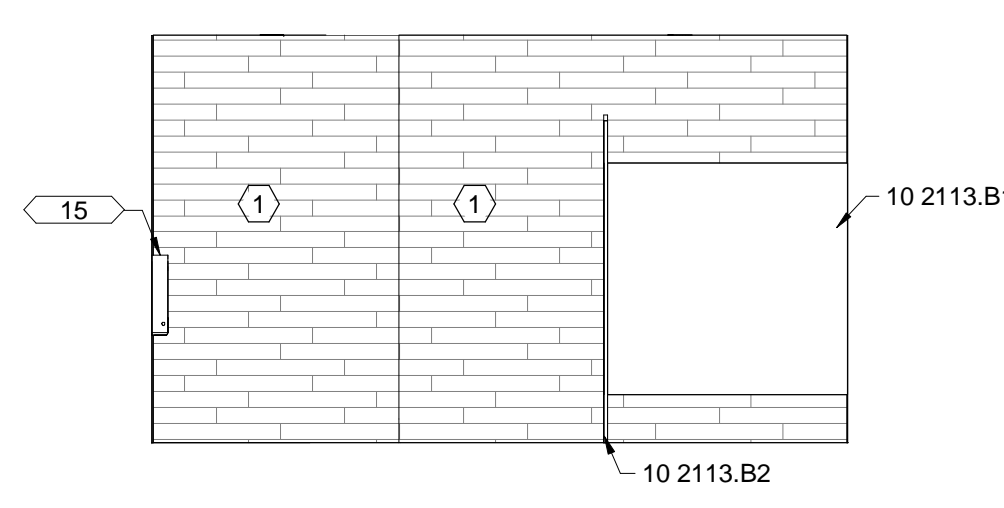
B3 INTERIOR ELEVATION
SCALE: 1/4" = 1'-0" KITCHEN - 403



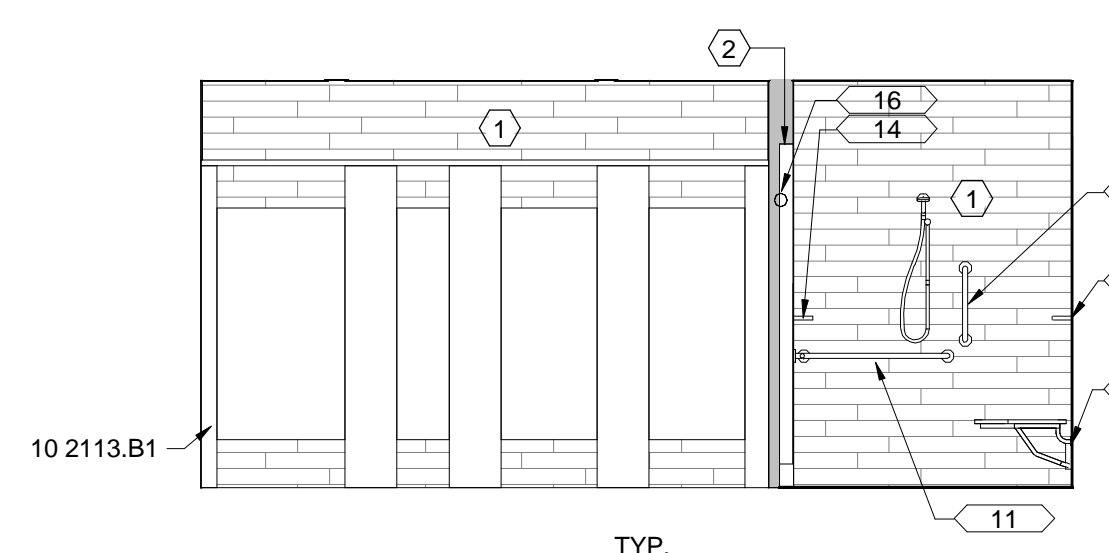
B4 INTERIOR ELEVATION
SCALE: 1/4" = 1'-0"



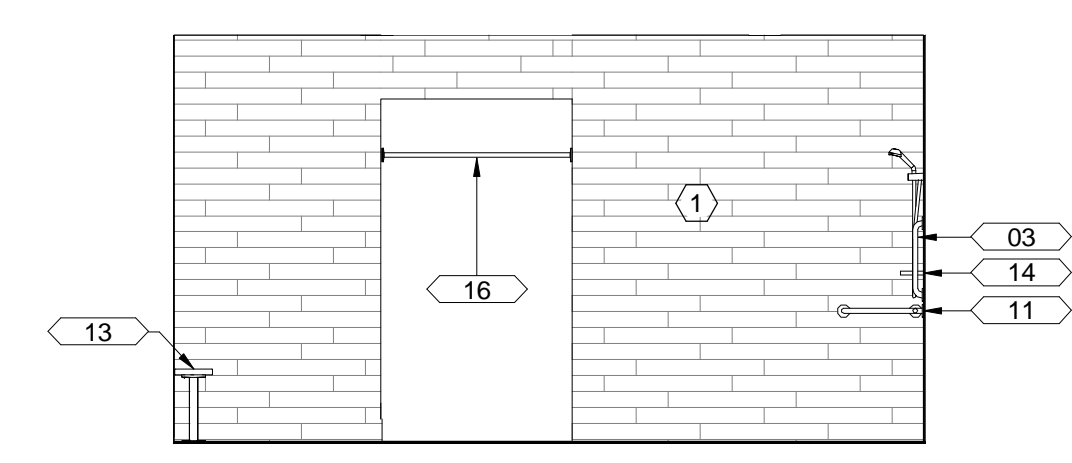
A1 INTERIOR ELEVATION
SCALE: 1/4" = 1'-0"



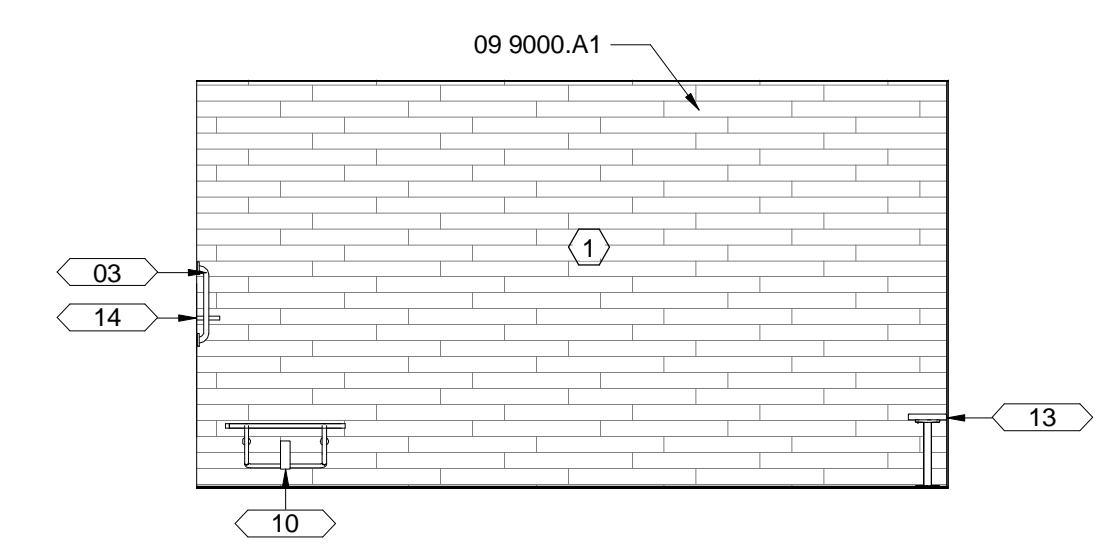
A2 INTERIOR ELEVATION
SCALE: 1/4" = 1'-0"



A3 INTERIOR ELEVATION
SCALE: 1/4" = 1'-0"



A4 INTERIOR ELEVATION
SCALE: 1/4" = 1'-0"



A5 INTERIOR ELEVATION
SCALE: 1/4" = 1'-0"

PUBLIC SAFETY BUILDING INTERIOR IMPROVEMENTS
CIBOLA COUNTY

DATE: FEB 18, 2022
DRAWN BY: VA
CHECKED BY: RRV

REVISION SCHEDULE

1	3/11/22	ADD 01
---	---------	--------

A-402



ENLARGED PLANS AND ELEVATIONS

PROJECT NUMBER: 21-007

